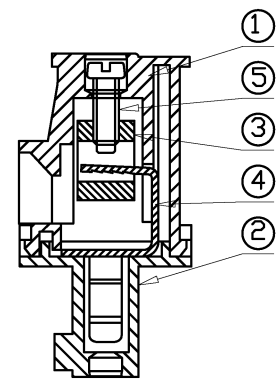
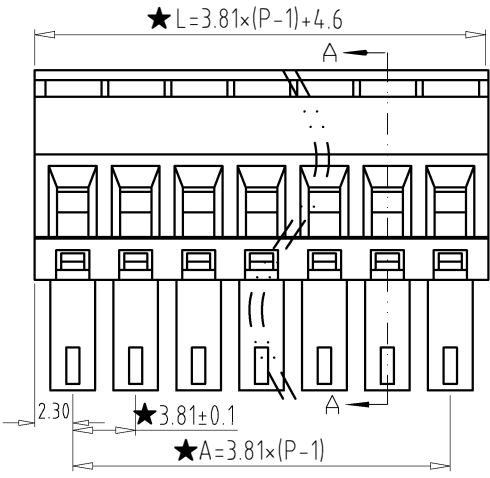
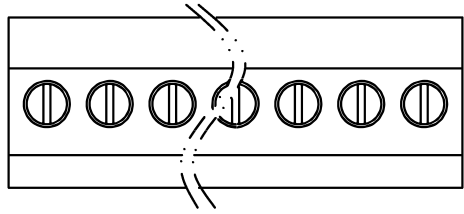


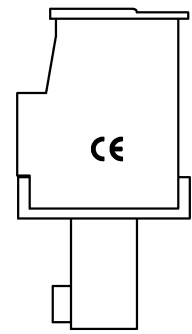
| | | | |
|------|---------|-----|----------|
| REV | CONTENT | CHK | DATE |
| V0.0 | CONTENT | MYZ | 21.07.10 |

Electrical :

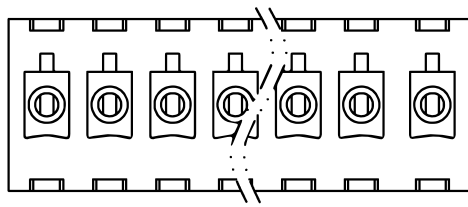
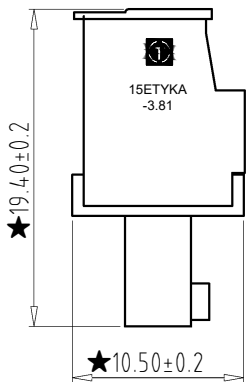
- | | | |
|--|----------------|------------------------|
| | UL | IEC |
| 1. Rated Voltage : | 300V | 250V |
| 2. Rated Current : | 8A | 7A |
| 3. Torque Value : | M2 , 1.77Lb.in | M2 , 0.2N.m |
| 4. Wire Range: | 28-16AWG | 0.5-1.5mm ² |
| 5. Stripping Length : | 6-7mm | |
| 6. Withstanding Voltage : | AC1600V/1Min. | |
| 7. Operating Temperature : | -40°C~+105°C | |
| 8. RoHS Compliance | | |
| 9. Safety Approval : | ULus CE | |
| 10. "★" is the key quality control point | | |



SECTION A-A



- 15ETYKA - 3.81 - XXP - X X - 00
- | | | | | | |
|--------------|---------|---|------------------------------------|--|-----------------------------------|
| ① | ② | ③ | ④ | ⑤ | ⑥ |
| ① Series No. | ② Pitch | ③ Poles 02 02Contacts 03 03Contacts ... 24 24Contacts | ④ 1 Single Pitch 2 Double Pitch | ⑤ Color: 1 Grey 2 Blue 3 Black 4 Green 5 Orange 6 Red 7 Transparent 8 Yellow 9 White | ⑥ Customer Request : 00--Standard |



| Total Pitch Tolerances in mm | | | | | | | | | | Nominal dimension range in mm | | | | | | | | | | ⊥ | ≡ | - | // | | | | | | | | | |
|------------------------------|---------|---------|---------|---------|----------|----------|----------|----------|----------|-------------------------------|---------|---------|---------|---------|----------|----------|----------|----------|----------|--------|---------|-----|--------|----------|----------|-----|-----|-----|-----|-----|-----|--|
| over 0 | over 30 | over 53 | over 70 | over 90 | over 115 | over 150 | over 250 | over 350 | over 500 | over 0 | over 30 | over 53 | over 70 | over 90 | over 115 | over 150 | over 200 | over 250 | over 320 | over 0 | over 10 | all | over 0 | over 100 | over 150 | 0.2 | 0.3 | 0.3 | 0.2 | 0.3 | 0.5 | |
| ±0.18 | ±0.20 | ±0.25 | ±0.3 | ±0.35 | ±0.44 | ±0.60 | ±0.70 | ±0.85 | ±0.20 | ±0.25 | ±0.30 | ±0.35 | ±0.44 | ±0.55 | ±0.70 | ±0.80 | ±0.90 | | | | 0.2 | 0.3 | 0.3 | 0.2 | 0.3 | 0.5 | | | | | | |

| | | | | | |
|------|--------------|-------------|----------|-----------------|--------------------------|
| 5 | SCREW | XX | P | STEEL | Zn Plated |
| 4 | CLAMP | XX | P | PHOSPHOR BRONZE | Ni Plated |
| 3 | BLOCK | XX | P | BRASS | Ni Plated |
| 2 | COVER | XX | 1 | PA66(UL94V-0) | SEE NOTE |
| 1 | HOUSING | XX | 1 | PA66(UL94V-0) | SEE NOTE |
| ITEM | NAME OF PART | NO. OF PART | Q'TY | MATERIAL | NOTE |
| DWG. | MYZ | DATE | 21.07.10 | SIZE | A4 UNITS mm SHEET/OF 1/1 |
| CHK. | | DATE | | SCALE | 1:1 |
| APP. | | DATE | | | |
| | | | | NAME | 15ETYKA-3.81-XXP-XX-00 |
| | | | | DWGNO. | XXXX |

拓宜(上海)工控电器设备有限公司
Topone(Shanghai) Industrial Control Electrical Equipment Co., LTD.

X-ON Electronics

Largest Supplier of Electrical and Electronic Components

Click to view similar products for [Pluggable Terminal Blocks](#) category:

Click to view products by [Toponelec](#) manufacturer:

Other Similar products are found below :

[57.510.0053](#) [721-104/026-047](#) [721-204/026-045](#) [MC 1.5/ 6-ST-3.5 GY AU](#) [ET02015000J0G](#) [860505](#) [860516](#) [860810](#) [GBPACX-12](#)
[93.731.4953.0](#) [PVP03-3,50](#) [PVS02-5,00](#) [1-1986160-3](#) [1377680000](#) [1531000000](#) [1546228-5](#) [ELFP03110](#) [ELFP10210](#) [ELFT07250](#)
[ELVD12100](#) [ELVF09400](#) [ELXH071G0E](#) [1725220000](#) [1760336](#) [1855000000](#) [19346](#) [1946309](#) [1973592](#) [19892](#) [25.320.4053.1](#) [25.320.4553.9](#)
[25.320.4753.1](#) [25.320.5453.1](#) [25.340.0353.1](#) [25.340.1053.1](#) [25.345.3553.0M001](#) [25.640.3553.1](#) [SH02-5,08](#) [SH06-3,81](#) [SH08-5,08](#) [SH08-](#)
[5,08-K](#) [SH12-5,08](#) [SHS04-5,00](#) [30.303](#) [30.305](#) [30.306](#) [PHP09-5,08](#) [25.193.0453.0](#) [25.320.4653.1](#) [25.332.2453.1](#)