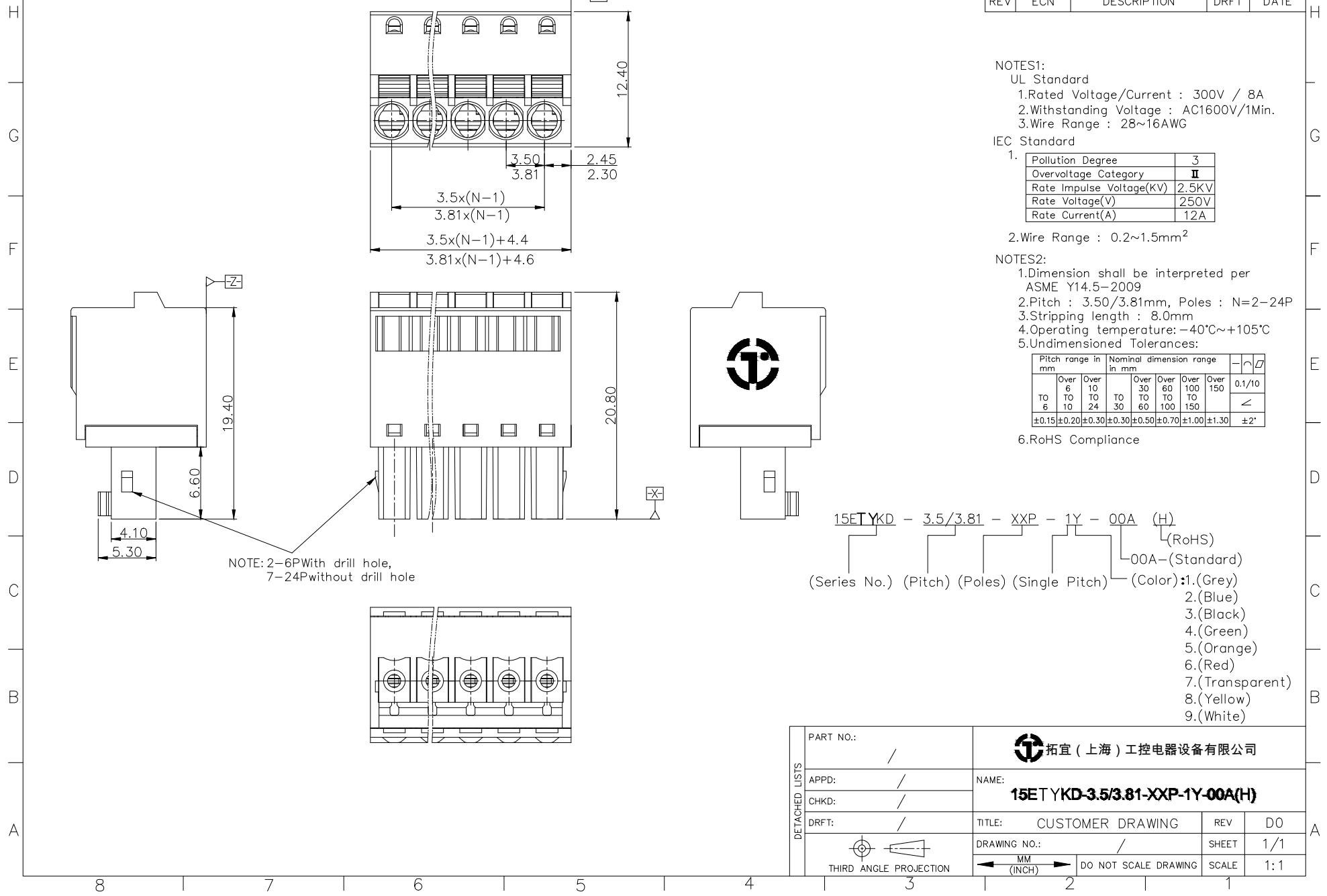


REVISION RECORD				
REV	ECN	DESCRIPTION	DRFT	DATE



NOTE: 2-6P With drill hole,
7-24P without drill hole

NOTES1:
UL Standard
1. Rated Voltage/Current : 300V / 8A
2. Withstanding Voltage : AC1600V/1Min.
3. Wire Range : 28~16AWG

IEC Standard

1. Pollution Degree	3
Overvoltage Category	II
Rate Impulse Voltage(KV)	2.5KV
Rate Voltage(V)	250V
Rate Current(A)	12A

2. Wire Range : 0.2~1.5mm²

NOTES2:
1. Dimension shall be interpreted per ASME Y14.5-2009
2. Pitch : 3.50/3.81mm, Poles : N=2-24P
3. Stripping length : 8.0mm
4. Operating temperature: -40°C~+105°C
5. Undimensioned Tolerances:

Pitch range in mm		Nominal dimension range in mm				0.1/10
Over 6	Over 10	Over 30	Over 60	Over 100	Over 150	
To 6	To 10	To 30	To 60	To 100	To 150	<
±0.15	±0.20	±0.30	±0.50	±0.70	±1.00	±2'

6. RoHS Compliance

15ET YKD - 3.5/3.81 - XXP - 1Y - 00A (H)

(Series No.) (Pitch) (Poles) (Single Pitch) (Color) (RoHS)

00A - (Standard)

1. (Grey)
2. (Blue)
3. (Black)
4. (Green)
5. (Orange)
6. (Red)
7. (Transparent)
8. (Yellow)
9. (White)

DETACHED LISTS	PART NO.: /	拓宜 (上海) 工控电器设备有限公司		
	APPD: /	NAME: 15ET YKD-3.5/3.81-XXP-1Y-00A(H)		
	CHKD: /	TITLE: CUSTOMER DRAWING	REV	DO
	DRFT: /	DRAWING NO.: /	SHEET	1/1
THIRD ANGLE PROJECTION		MM (INCH)	DO NOT SCALE DRAWING	SCALE 1:1

X-ON Electronics

Largest Supplier of Electrical and Electronic Components

Click to view similar products for [Pluggable Terminal Blocks](#) category:

Click to view products by [Toponelec](#) manufacturer:

Other Similar products are found below :

[57.510.0053](#) [MC 1.5/ 6-ST-3.5 GY AU](#) [ET02015000J0G](#) [734-104](#) [734-302](#) [860505](#) [860516](#) [860810](#) [GBPACX-12](#) [93.731.4953.0](#) [PV05-5,08-K](#) [PVP03-3,50](#) [PVP04-3,50](#) [PVS02-5,00](#) [1-1986160-3](#) [1377680000](#) [1531000000](#) [1546228-5](#) [ELFP03110](#) [ELFT07250](#) [ELVD12100](#) [ELVF09400](#) [ELVP03100](#) [ELXH071G0E](#) [1700410](#) [1702246](#) [1705229](#) [1714537](#) [1717806](#) [1719600](#) [1728941](#) [1734692](#) [1734795](#) [1740291](#) [1740628](#) [1746952](#) [1750207](#) [1752865](#) [1754115](#) [1754144](#) [1756913](#) [1760051](#) [1760336](#) [1765111](#) [1776388](#) [1777701](#) [1783410](#) [1800227](#) [1801080](#) [1809474](#)