

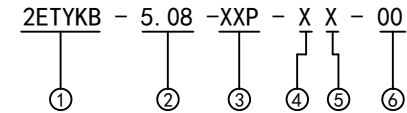
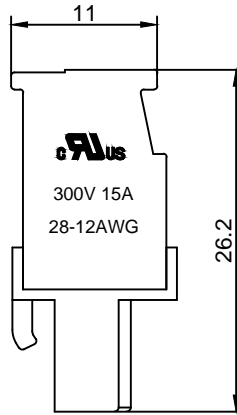
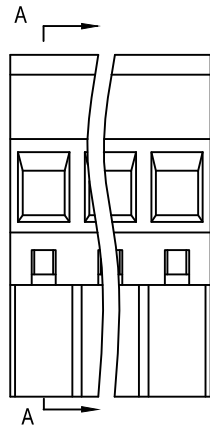
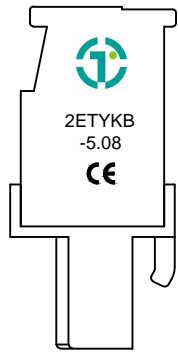
Material :

- ① Cover : PA66(UL94V-0)
- ② Contact : Phosphor Bronze
- ③ Cage : Brass , Ni Plated
- ④ Housing : PA66(UL94V-0)
- ⑤ Screws : Steel , Cr³⁺Zn Plated

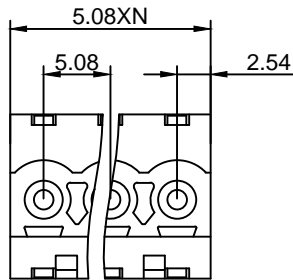
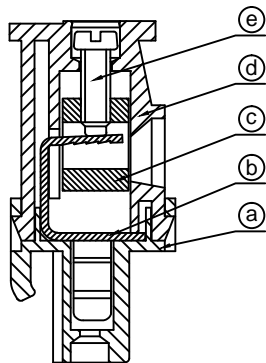
Electrical :

- 1.Rated Voltage : 300V UL 320V IEC
- 2.Rated Current : 15A 10A
- 3.Torque Value : M2.5 , 3.54Lb.in M2.5 , 0.4N.m
- 4.Wire Range: 28-12AWG 2.5mm²
- 5.Stripping Length : 7-8mm
- 6.Withstanding Voltage : AC1600V/1Min.
- 7.Operating Temperature : -40 °C~+105 °C
- 8.RoHS Compliance
- 9.Safety Approval :
- 10.Undimensioned Tolerances:

Pitch Range In mm			Nominal Dimension Range In mm					
≤6	6 ~ 10	10 ~ 24	≤30	30 ~ 60	60 ~ 100	100 ~ 150	>150	0.05/10
±0.10	±0.15	±0.25	±0.20	±0.30	±0.50	±0.70	±1.00	±0.1°



- ① Series NO.
- ② Pitch
- ③ Poles
02 02Contacts
03 03Contacts
...
24 24Contacts
- ④ 1 Single Pitch
2 Double Pitch
- ⑤ Color: 1 Grey
2 Blue
3 Black
4 Green(Standard For AH)
5 Orange
6 Red
7 Transparent
8 Yellow
9 White
- ⑥ Customer Request:
00--Standard M2.5



DETACHED LISTS	拓宜(上海)工控电器设备有限公司 Topone(Shanghai) Industrial Control Electrical Equipment Co., LTD.	
	APPD: 9/16/16'	PART NO. 2ETYKB-5.08-XXP-XX-00
	CHKD: 9/15/16'	DRAWING NO.
	DRFT: 9/14/16'	REV 1
THIRD ANGLE PROJECTION		SHEET 1/1 SCALE 1/1
MM (INCH) DO NOT SCALE DRAWING		SHEET 1/1 SCALE 1/1

X-ON Electronics

Largest Supplier of Electrical and Electronic Components

Click to view similar products for [Pluggable Terminal Blocks](#) category:

Click to view products by [Toponelec](#) manufacturer:

Other Similar products are found below :

[57.510.0053](#) [721-104/026-047](#) [721-204/026-045](#) [MC 1.5/ 6-ST-3.5 GY AU](#) [ET02015000J0G](#) [860505](#) [860516](#) [860810](#) [GBPACX-12](#)
[93.731.4953.0](#) [PVP03-3,50](#) [PVS02-5,00](#) [1-1986160-3](#) [1377680000](#) [1531000000](#) [1546228-5](#) [ELFP03110](#) [ELFP10210](#) [ELFT07250](#)
[ELVD12100](#) [ELVF09400](#) [ELXH071G0E](#) [1725220000](#) [1760336](#) [1855000000](#) [19346](#) [1946309](#) [1973592](#) [19892](#) [25.320.4053.1](#) [25.320.4553.9](#)
[25.320.4753.1](#) [25.320.5453.1](#) [25.340.0353.1](#) [25.340.1053.1](#) [25.345.3553.0M001](#) [25.640.3553.1](#) [SH02-5,08](#) [SH06-3,81](#) [SH08-5,08](#) [SH08-](#)
[5,08-K](#) [SH12-5,08](#) [SHS04-5,00](#) [30.303](#) [30.305](#) [30.306](#) [PHP09-5,08](#) [25.193.0453.0](#) [25.320.4653.1](#) [25.332.2453.1](#)