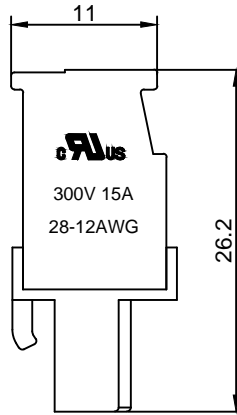
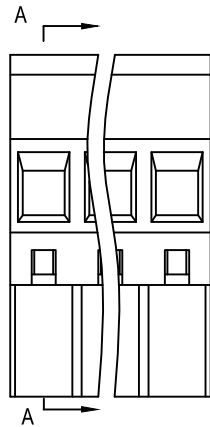
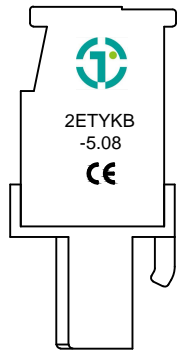


**Material :**

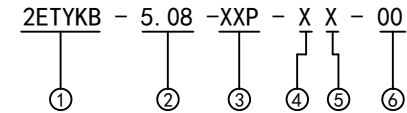
- ① Cover : PA66(UL94V-0)
- ② Contact : Phosphor Bronze
- ③ Cage : Brass , Ni Plated
- ④ Housing : PA66(UL94V-0)
- ⑤ Screws : Steel , Cr<sup>3+</sup>Zn Plated

**Electrical :**

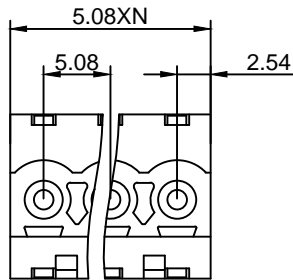
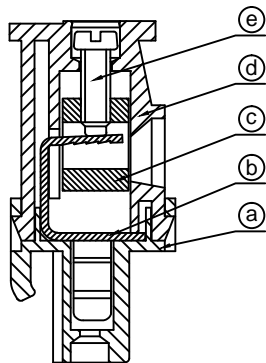
- |                              |                  |                    |
|------------------------------|------------------|--------------------|
|                              | UL               | IEC                |
| 1.Rated Voltage :            | 300V             | 320V               |
| 2.Rated Current :            | 15A              | 10A                |
| 3.Torque Value :             | M2.5 , 3.54Lb.in | M2.5 , 0.4N.m      |
| 4.Wire Range:                | 28-12AWG         | 2.5mm <sup>2</sup> |
| 5.Stripping Length :         | 7-8mm            |                    |
| 6.Withstanding Voltage :     | AC1600V/1Min.    |                    |
| 7.Operating Temperature :    | -40 °C~+105 °C   |                    |
| 8.RoHS Compliance            |                  |                    |
| 9.Safety Approval :          | cULus            |                    |
| 10.Undimensioned Tolerances: |                  |                    |



Pitch Range In mm			Nominal Dimension Range In mm					
≤6	6 ~ 10	10 ~ 24	≤30	30 ~ 60	60 ~ 100	100 ~ 150	>150	0.05/10
±0.10	±0.15	±0.25	±0.20	±0.30	±0.50	±0.70	±1.00	±0.1°



- ① Series NO.
- ② Pitch
- ③ Poles  
02 02Contacts  
03 03Contacts  
...  
24 24Contacts
- ④ 1 Single Pitch  
2 Double Pitch
- ⑤ Color: 1 Grey  
2 Blue  
3 Black  
4 Green(Standard For AH)  
5 Orange  
6 Red  
7 Transparent  
8 Yellow  
9 White
- ⑥ Customer Request:  
00--Standard M2.5



DETACHED LISTS	<b>拓宜(上海)工控电器设备有限公司</b> Topone(Shanghai) Industrial Control Electrical Equipment Co., LTD.	
	APPD: 9/16/16'	PART NO. <b>2ETYKB-5.08-XXP-XX-00</b>
	CHKD: 9/15/16'	DRAWING NO.
	DRFT: 9/14/16'	REV 1
THIRD ANGLE PROJECTION		SHEET 1/1 SCALE 1/1
MM (INCH)		DO NOT SCALE DRAWING

## X-ON Electronics

Largest Supplier of Electrical and Electronic Components

*Click to view similar products for [Pluggable Terminal Blocks](#) category:*

*Click to view products by [Toponelec](#) manufacturer:*

Other Similar products are found below :

[57.510.0053](#) [721-104/026-047](#) [721-204/026-045](#) [MC 1.5/ 6-ST-3.5 GY AU](#) [ET02015000J0G](#) [860505](#) [860516](#) [860810](#) [GBPACX-12](#)  
[93.731.4953.0](#) [PVP03-3,50](#) [PVS02-5,00](#) [1-1986160-3](#) [1377680000](#) [1531000000](#) [1546228-5](#) [ELFP03110](#) [ELFP10210](#) [ELFT07250](#)  
[ELVD12100](#) [ELVF09400](#) [ELXH071G0E](#) [1725220000](#) [1760336](#) [1855000000](#) [19346](#) [1946309](#) [1973592](#) [19892](#) [25.320.4053.1](#) [25.320.4553.9](#)  
[25.320.4753.1](#) [25.320.5453.1](#) [25.340.0353.1](#) [25.340.1053.1](#) [25.345.3553.0M001](#) [25.640.3553.1](#) [SH02-5,08](#) [SH06-3,81](#) [SH08-5,08](#) [SH08-](#)  
[5,08-K](#) [SH12-5,08](#) [SHS04-5,00](#) [30.303](#) [30.305](#) [30.306](#) [PHP09-5,08](#) [25.193.0453.0](#) [25.320.4653.1](#) [25.332.2453.1](#)