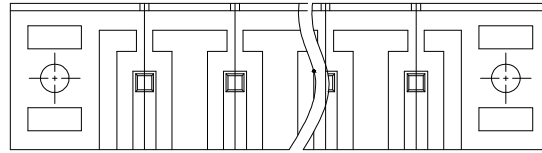
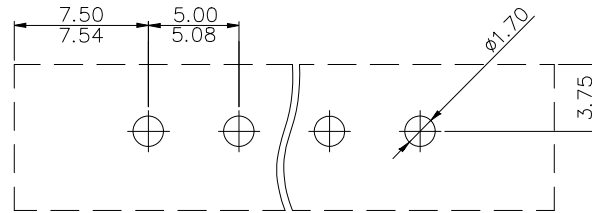
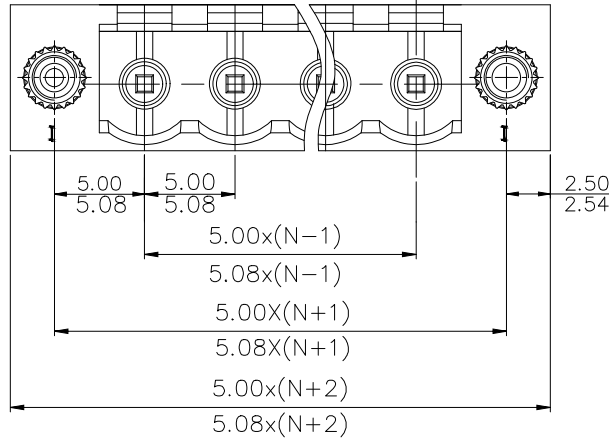
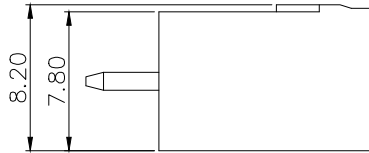


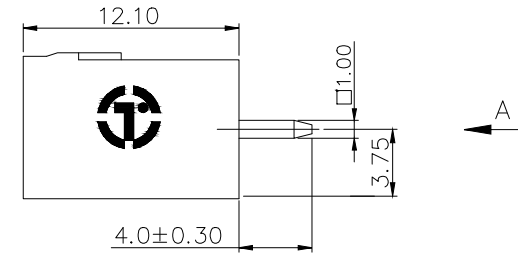
| REVISION RECORD |     |             |      |      |
|-----------------|-----|-------------|------|------|
| REV             | ECN | DESCRIPTION | DRFT | DATE |



VIEW A



PCB LAYOUT



NOTES1:

- UL Standard
- 1.Rated voltage/current : 300V / 15A
- 2.Withstanding voltage : AC1600V/1Min.

IEC Standard

|                          |       |
|--------------------------|-------|
| Pollution degree         | 2     |
| Overtoltage category     | III   |
| Rate impulse voltage(KV) | 4.0KV |
| Rate voltage(V)          | 320V  |
| Rate current(A)          | 20A   |

NOTES2:

- 1.Dimension shall be interpreted per ASME Y14.5-2009
- 2.Pitch : 5.00/5.08mm, Poles : N=02~22P
- 3.Operating temperature: -40°C~+105°C
- 4.Undimensioned tolerances:

| Pitch range in mm | Nominal dimension range in mm |               |               |                |                 | Tolerance |       |     |
|-------------------|-------------------------------|---------------|---------------|----------------|-----------------|-----------|-------|-----|
|                   | Over 6 TO 10                  | Over 10 TO 24 | Over 30 TO 60 | Over 60 TO 100 | Over 100 TO 150 |           |       |     |
| ±0.15             | ±0.20                         | ±0.30         | ±0.30         | ±0.50          | ±0.70           | ±1.00     | ±1.30 | ±2' |

5.RoHS Compliance

2ET YVM - 5.0/5.08 - XXP - 1Y - 00A (H)

(Series No.) (Pitch) (Poles)(Single Pitch)(Color) (H)

(RoHS)  
00A- (Standard)

1.(Grey)  
2. (Blue)  
3. (Black)  
4. (Green)  
5. (Orange)  
6. (Red)  
7. (Transparent)  
8. (Yellow)  
9. (White)

|                        |           |                                      |  |       |     |
|------------------------|-----------|--------------------------------------|--|-------|-----|
| DETACHED LISTS         | PART NO.: | 拓宜 (上海) 工控电器设备有限公司                   |  |       |     |
|                        | APPD:     | NAME: 2ET YVM-5.0/5.08-XXP-1Y-00A(H) |  |       |     |
|                        | CHKD:     | TITLE: CUSTOMER DRAWING              |  | REV   | DO  |
|                        | DRFT:     | DRAWING NO.:                         |  | SHEET | 1/1 |
| THIRD ANGLE PROJECTION |           | DO NOT SCALE DRAWING                 |  | SCALE | 1:1 |

## X-ON Electronics

Largest Supplier of Electrical and Electronic Components

*Click to view similar products for [Pluggable Terminal Blocks](#) category:*

*Click to view products by [Toponelec](#) manufacturer:*

Other Similar products are found below :

[57.510.0053](#) [MC 1.5/ 6-ST-3.5 GY AU](#) [ET02015000J0G](#) [734-104](#) [734-302](#) [860505](#) [860516](#) [860810](#) [GBPACX-12](#) [93.731.4953.0](#) [PV05-5,08-K](#) [PVP03-3,50](#) [PVP04-3,50](#) [PVS02-5,00](#) [1-1986160-3](#) [1377680000](#) [1531000000](#) [1546228-5](#) [ELFP03110](#) [ELFT07250](#) [ELVD12100](#) [ELVF09400](#) [ELVP03100](#) [ELXH071G0E](#) [1700410](#) [1702246](#) [1705229](#) [1714537](#) [1717806](#) [1719600](#) [1728941](#) [1734692](#) [1734795](#) [1740291](#) [1740628](#) [1746952](#) [1750207](#) [1752865](#) [1754115](#) [1754144](#) [1756913](#) [1760051](#) [1760336](#) [1765111](#) [1776388](#) [1777701](#) [1783410](#) [1800227](#) [1801080](#) [1809474](#)