

1

2

3

4

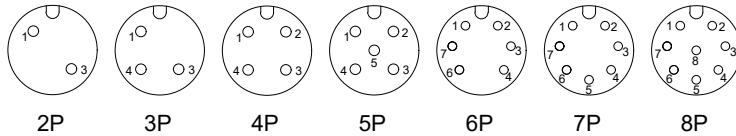
5

6

7

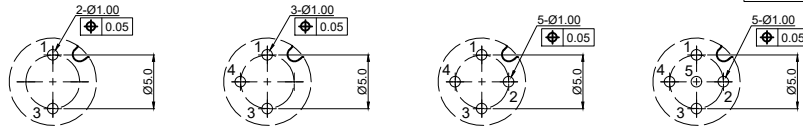
8

Mark	Qty	Engineering Change Area



A-CODE FEMALE INTERFACE

POLE	02	03	04	05	06	07	08
PIN SIZE "A"	0.8mm	0.8mm	0.8mm	0.8mm	0.8mm	0.8mm	0.8mm
RATED VOLTAGE	250V	250V	250V	60V	30V	30V	30V
RATED CURRENT	4A	4A	4A	4A	2A	2A	2A
RATED IMPULSE VOLTAGE	2.5KV	2.5KV	2.5KV	1.5KV	0.8KV	0.8KV	0.8KV

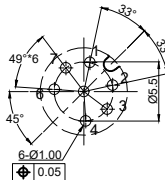


2P

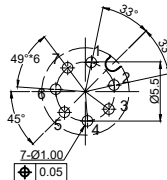
3P

4P

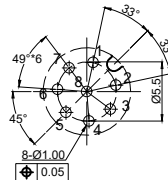
5P



6P



7P



8P

NOTE:

1. ELECTRICAL:

1.1. CONTACT RESISTANCE: $\leq 15\text{m}\Omega$ 1.2. INSULATION RESISTANCE: $\geq 100\text{M}\Omega$

2. ENVIRONMENTAL:

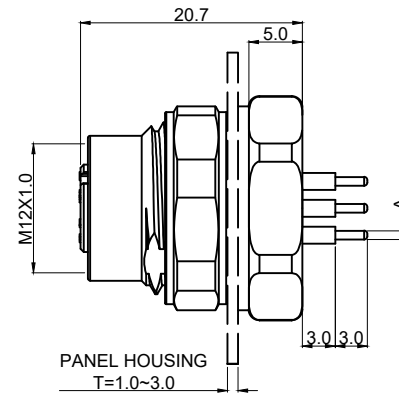
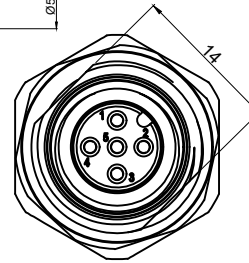
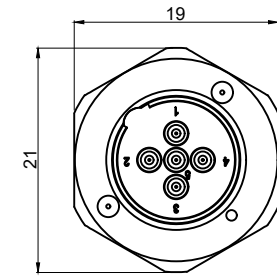
2.1. OPERATING TEMPERATURE: -25°C TO $+85^{\circ}\text{C}$

2.2. PROTECTION GRADE: IP67, WHEN TIGHT LOCKED

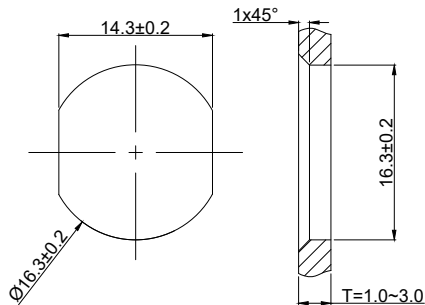
2.3. POLLUTION DEGREE: 3

3. CONTACT MATERIAL: BRASS NI PLATED UNDER GOLD PLATED

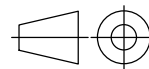
4. CONFORM TO IEC 61076-2-101

PANEL HOUSING
T=1.0~3.0

RECOMMENDED PCB LAYOUT



PANEL CUT OUT

* UNLESS OTHERWISE SPECIFIED
TOLERANCES ON DECIMAL IS:X. ± 0.50 X° $\pm 2^{\circ}$ X.X ± 0.30 X.XX ± 0.20 All dimensions
are in mm

Material:

Finishing:

Phase Marking

Weight

Scale

拓宜(上海)工控电器设备有限公司
Topone(Shanghai) Industrial Control Electrical Equipment Co., LTD.Part Name:
C12B-FSA-RM1-5Rev.
01Page:
1 OF 1

1

2

3

4

5

6

7

8

X-ON Electronics

Largest Supplier of Electrical and Electronic Components

Click to view similar products for [Standard Circular Connector](#) category:

Click to view products by [Toponelec](#) manufacturer:

Other Similar products are found below :

[600273N007](#) [6134-336-13149](#) [6134-337-11149](#) [6134-337-2390](#) [6134-341-17149](#) [67-02E12-60PX](#) [680-SMG](#) [CXS3102A181S](#)
[D38999/20FC8SA L/C](#) [75-190216-08S](#) [75-190611-03S](#) [75-474014-05S](#) [75-474618-04S](#) [75-474620-07P](#) [799539-000](#) [805-005-07NF11-19PC](#)
[805-005-07NF15-7PA](#) [FMP.2M.310.XLCT](#) [836783-1](#) [862256-1](#) [866857-1](#) [867865-1](#) [PT08P-14-19S](#) [PT08P-14-5S](#) [QCM019PC2DC012B](#)
[121583-0217](#) [121667-0020](#) [RD10A16-19-P6CS051/1](#) [RD16A14-12-S6CS051/2](#) [1301240268](#) [1301240275](#) [1301860906](#) [DCU-08BFEA-](#)
[LL7001](#) [RM15WTP-CP\(5\)\(71\)](#) [14482](#) [16283-18](#) [1877910-1](#) [206039-3](#) [206323-1](#) [207002-2](#) [207682-1](#) [CA06COME14SA7P](#) [211777-1](#) [JL04-](#)
[1012CK\(05\)-R](#) [JL04V-2A28-11PE-R](#) [JL04V-2E10SL-3PE-B-R](#) [JL04V-2E20-15PE-B-R](#) [JL04V-2E20-4PE-B-R](#) [JL04V-6A24-11SE-EB-R](#)
[JN1AS04MK1X](#)