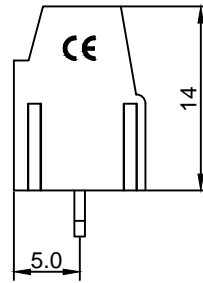
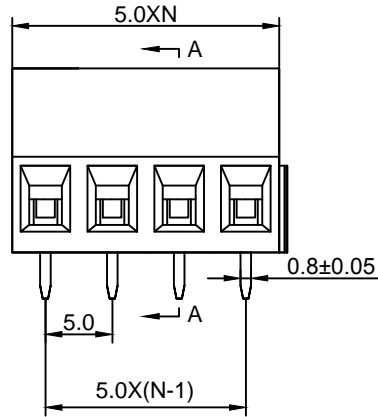
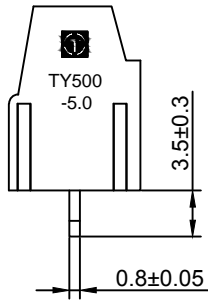


**Material :**

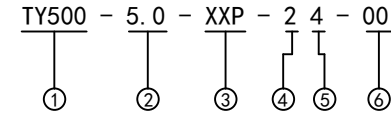
- (a) Housing : PA66(UL94V-0)
- (b) Screws : Steel , Cr<sup>3+</sup>Zn Plated
- (c) Pin Header : Brass , Tin Plated
- (d) Cage : Brass , Ni Plated

**Electrical :**

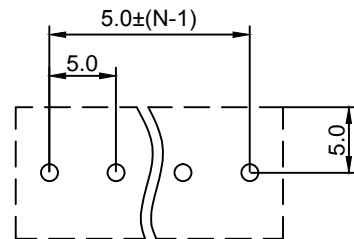
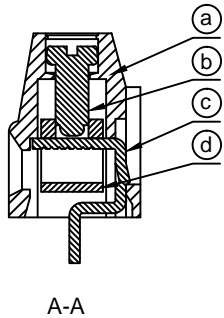
- |                              |                  |                        |
|------------------------------|------------------|------------------------|
|                              | UL               | IEC                    |
| 1.Rated Voltage :            | 300V             | 250V                   |
| 2.Rated Current :            | 15A              | 18A                    |
| 3.Torque Value :             | M2.5 , 3.54Lb.in | M2.5 , 0.4N.m          |
| 4.Wire Range:                | 24-12AWG         | 0.5-2.5mm <sup>2</sup> |
| 5.Stripping Length :         | 6-7mm            |                        |
| 6.Withstanding Voltage :     | AC2000V/1Min.    |                        |
| 7.Operating Temperature :    | -40°C~+105°C     |                        |
| 8.RoHS Compliance            |                  |                        |
| 9.Safety Approval :          | cULus            |                        |
| 10.Undimensioned Tolerances: |                  |                        |



Pitch Range In mm			Nominal Dimension Range In mm					Tolerances	
≤6	6 ~ 10	10 ~ 24	≤30	30 ~ 60	60 ~ 100	100 ~ 150	>150	0.05/10	0.1°
±0.10	±0.15	±0.25	±0.20	±0.30	±0.50	±0.70	±1.00	±0.1°	

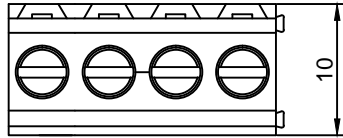


- ① Series No.
- ② Pitch
- ③ Poles  
02 02Contacts  
03 03Contacts  
...  
24 24Contacts
- ④ 1 Single Pitch  
2 Double Pitch
- ⑤ Color: 1 Grey  
2 Blue  
3 Black  
4 Green  
5 Orange  
6 Red  
...  
7 Transparent  
8 Yellow  
9 White
- ⑥ Customer Request :  
00--Standard



**TOPONELEC** 拓宜(上海)工控电器设备有限公司  
Topone(Shanghai) Industrial Control Electrical Equipment Co., LTD.

DETACHED LISTS	APPD: MA_9/8/17'	PART NO.		
	CHKD: Yu_9/7/17'	DRAWING NO.		
	DRFT: Chen_9/6/17'	REV	1	
	THIRD ANGLE PROJECTION	SHEET	1/1	
	MM (INCH)	DO NOT SCALE DRAWING	SCALE	1/1

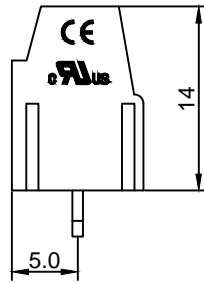
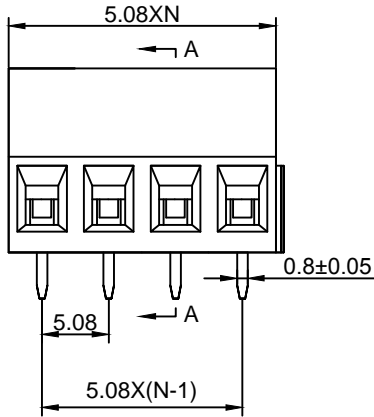
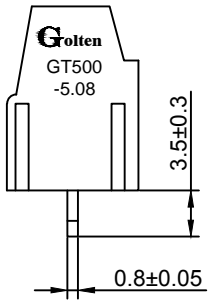


**Material :**

- (a) Housing : PA66(UL94V-0)
- (b) Screws : Steel , Cr<sup>3+</sup>Zn Plated
- (c) Pin Header : Brass , Tin Plated
- (d) Cage : Brass , Ni Plated

**Electrical :**

- |                              |                  |                        |
|------------------------------|------------------|------------------------|
|                              | UL               | IEC                    |
| 1.Rated Voltage :            | 300V             | 250V                   |
| 2.Rated Current :            | 15A              | 18A                    |
| 3.Torque Value :             | M2.5 , 3.54Lb.in | M2.5 , 0.4N.m          |
| 4.Wire Range:                | 24-12AWG         | 0.5-2.5mm <sup>2</sup> |
| 5.Stripping Length :         | 6-7mm            |                        |
| 6.Withstanding Voltage :     | AC2000V/1Min.    |                        |
| 7.Operating Temperature :    | -40°C~+105°C     |                        |
| 8.RoHS Compliance            |                  |                        |
| 9.Safety Approval :          | eULus            |                        |
| 10.Undimensioned Tolerances: |                  |                        |

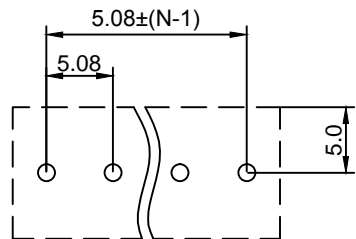
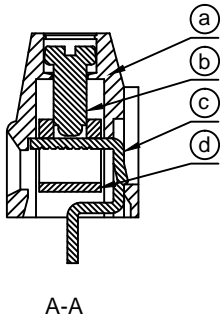


Pitch Range In mm			Nominal Dimension Range In mm					□	∩	◇
≤6	6 ~ 10	10 ~ 24	≤30	30 ~ 60	60 ~ 100	100 ~ 150	>150	0.05/10		
±0.10	±0.15	±0.25	±0.20	±0.30	±0.50	±0.70	±1.00	±0.1°		

GT500 - 5.08 - XXP - 2 4 - 00 AH

①      ②      ③      ④      ⑤      ⑥      ⑦

- ① Series No.
- ② Pitch
- ③ Poles  
02 02Contacts  
03 03Contacts  
...  
24 24Contacts
- ④ 1 Single Pitch  
2 Double Pitch
- ⑤ Color: 1 Grey  
2 Blue  
3 Black  
4 Green  
5 Orange  
6 Red  
7 Transparent  
8 Yellow  
9 White
- ⑥ Customer Request : 00--Standard
- ⑦ AH--Standard(PA66)



DETACHED LISTS	<b>Grolten</b> 宁波冠泰电子有限公司 NINGBO GOLTEN ELECTRONICS CO., LTD.							
	APPD: MA_9/8/17'	PART NO. GT500-5.08-XXP-XX-00AH						
	CHKD: Yu_9/7/17'							
	DRFT: Chen_9/6/17'							
 THIRD ANGLE PROJECTION	 MM (INCH)	<table border="1"> <tr> <td>REV</td> <td>1</td> </tr> <tr> <td>SHEET</td> <td>1/1</td> </tr> <tr> <td>SCALE</td> <td>1/1</td> </tr> </table>	REV	1	SHEET	1/1	SCALE	1/1
REV	1							
SHEET	1/1							
SCALE	1/1							

## X-ON Electronics

Largest Supplier of Electrical and Electronic Components

*Click to view similar products for [Fixed Terminal Blocks](#) category:*

*Click to view products by [Toponelec](#) manufacturer:*

Other Similar products are found below :

[MBE-1512](#) [MBE-1520](#) [MBE-154](#) [MBE-156](#) [MBES-156](#) [MH-2512](#) [MHE-132](#) [MHE-163](#) [MI-254 \(35\)](#) [MPT-275](#) [ELM10110G](#) [BA311TU](#)  
[BA411SU](#) [MV-254-D](#) [MV-255](#) [MV-493](#) [MVE-252](#) [MVE-253](#) [MVEB-153](#) [1705142](#) [1-796689-8](#) [1841320000](#) [S451](#) [29.007](#) [29.116](#) [30.204](#)  
[30.503](#) [30.756](#) [30.853](#) [9872-0-00-15-00-00-33-0](#) [996750](#) [1710052](#) [20020316-G071B01LF](#) [20020327-C061B01LF](#) [29590](#) [30.652](#) [30.710](#)  
[30.754](#) [30.757](#) [32.058](#) [37.206](#) [37.208](#) [37.507](#) [37.558](#) [38331-5812](#) [38331-8018](#) [38540-1910](#) [39.002](#) [MBE-1517](#) [MBE-153](#)