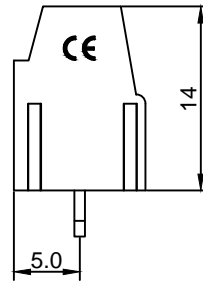
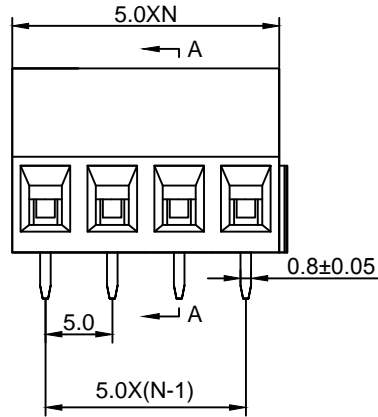
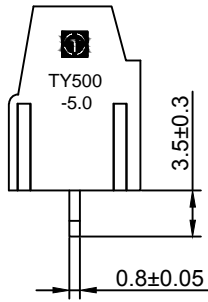


Material :

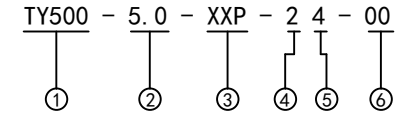
- (a) Housing : PA66(UL94V-0)
- (b) Screws : Steel , Cr³⁺Zn Plated
- (c) Pin Header : Brass , Tin Plated
- (d) Cage : Brass , Ni Plated

Electrical :

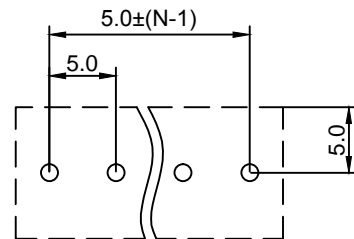
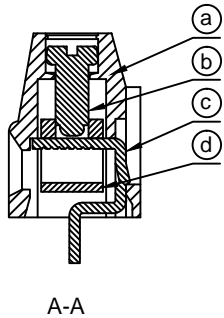
- | | | |
|-------------------------------|------------------|------------------------|
| | UL | IEC |
| 1. Rated Voltage : | 300V | 250V |
| 2. Rated Current : | 15A | 18A |
| 3. Torque Value : | M2.5 , 3.54Lb.in | M2.5 , 0.4N.m |
| 4. Wire Range : | 24-12AWG | 0.5-2.5mm ² |
| 5. Stripping Length : | 6-7mm | |
| 6. Withstanding Voltage : | AC2000V/1Min. | |
| 7. Operating Temperature : | -40°C~+105°C | |
| 8. RoHS Compliance | | |
| 9. Safety Approval : | cULus | |
| 10. Undimensioned Tolerances: | | |



| Pitch Range In mm | | | Nominal Dimension Range In mm | | | | | — | ∩ | □ |
|-------------------|--------|---------|-------------------------------|---------|----------|-----------|-------|---------|---|---|
| ≤6 | 6 ~ 10 | 10 ~ 24 | ≤30 | 30 ~ 60 | 60 ~ 100 | 100 ~ 150 | >150 | 0.05/10 | | |
| ±0.10 | ±0.15 | ±0.25 | ±0.20 | ±0.30 | ±0.50 | ±0.70 | ±1.00 | ±0.1° | | |

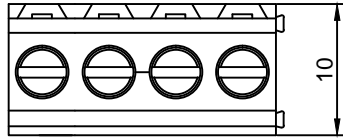


- ① Series No.
- ② Pitch
- ③ Poles
02 02Contacts
03 03Contacts
...
24 24Contacts
- ④ 1 Single Pitch
2 Double Pitch
- ⑤ Color: 1 Grey
2 Blue
3 Black
4 Green
5 Orange
6 Red
...
7 Transparent
8 Yellow
9 White
- ⑥ Customer Request :
00--Standard



TOPONELEC 拓宜(上海)工控电器设备有限公司
Topone(Shanghai) Industrial Control Electrical Equipment Co., LTD.

| | | | | |
|----------------|------------------------|----------------------|-------|-----|
| DETACHED LISTS | APPD: MA_9/8/17' | PART NO. | | |
| | CHKD: Yu_9/7/17' | DRAWING NO. | | |
| | DRFT: Chen_9/6/17' | REV | 1 | |
| | THIRD ANGLE PROJECTION | SHEET | 1/1 | |
| | MM (INCH) | DO NOT SCALE DRAWING | SCALE | 1/1 |

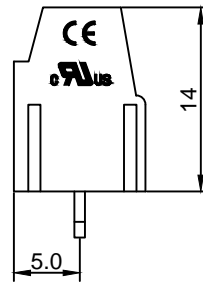
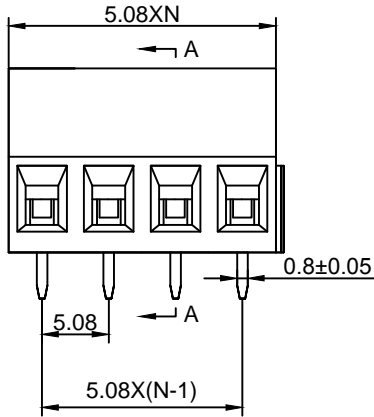
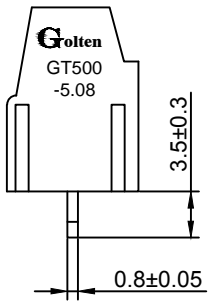


Material :

- (a) Housing : PA66(UL94V-0)
- (b) Screws : Steel , Cr³⁺Zn Plated
- (c) Pin Header : Brass , Tin Plated
- (d) Cage : Brass , Ni Plated

Electrical :

- | | | |
|------------------------------|------------------|------------------------|
| | UL | IEC |
| 1.Rated Voltage : | 300V | 250V |
| 2.Rated Current : | 15A | 18A |
| 3.Torque Value : | M2.5 , 3.54Lb.in | M2.5 , 0.4N.m |
| 4.Wire Range: | 24-12AWG | 0.5-2.5mm ² |
| 5.Stripping Length : | 6-7mm | |
| 6.Withstanding Voltage : | AC2000V/1Min. | |
| 7.Operating Temperature : | -40°C~+105°C | |
| 8.RoHS Compliance | | |
| 9.Safety Approval : | eULus | |
| 10.Undimensioned Tolerances: | | |

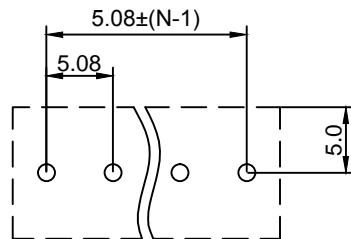
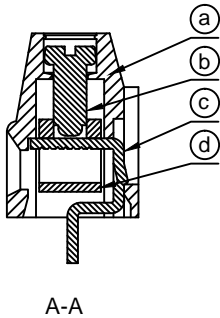


| Pitch Range In mm | | | Nominal Dimension Range In mm | | | | | □ | ∩ | ◇ |
|-------------------|--------|---------|-------------------------------|---------|----------|-----------|-------|---------|---|---|
| ≤6 | 6 ~ 10 | 10 ~ 24 | ≤30 | 30 ~ 60 | 60 ~ 100 | 100 ~ 150 | >150 | 0.05/10 | | |
| ±0.10 | ±0.15 | ±0.25 | ±0.20 | ±0.30 | ±0.50 | ±0.70 | ±1.00 | ±0.1° | | |

GT500 - 5.08 - XXP - 2 4 - 00 AH

① ② ③ ④ ⑤ ⑥ ⑦

- ① Series No.
- ② Pitch
- ③ Poles
02 02Contacts
03 03Contacts
...
24 24Contacts
- ④ 1 Single Pitch
2 Double Pitch
- ⑤ Color: 1 Grey
2 Blue
3 Black
4 Green
5 Orange
6 Red
7 Transparent
8 Yellow
9 White
- ⑥ Customer Request : 00--Standard
- ⑦ AH--Standard(PA66)



| | | | | | | | | | | | | | | |
|----------------------------|--|---|-------------|-----|---|--|-------|-----|-----------|----------------------|-------|--|--|-----|
| DETACHED LISTS | Grolten 宁波冠泰电子有限公司 NINGBO GOLTEN ELECTRONICS CO., LTD. | | | | | | | | | | | | | |
| | APPD: MA_9/8/17' | PART NO. GT500-5.08-XXP-XX-00AH | | | | | | | | | | | | |
| | CHKD: Yu_9/7/17' | | | | | | | | | | | | | |
| | DRFT: Chen_9/6/17' | | | | | | | | | | | | | |
| THIRD ANGLE PROJECTION | | <table border="1"> <tr> <td>DRAWING NO.</td> <td>REV</td> <td>1</td> </tr> <tr> <td></td> <td>SHEET</td> <td>1/1</td> </tr> <tr> <td>MM (INCH)</td> <td>DO NOT SCALE DRAWING</td> <td>SCALE</td> </tr> <tr> <td></td> <td></td> <td>1/1</td> </tr> </table> | DRAWING NO. | REV | 1 | | SHEET | 1/1 | MM (INCH) | DO NOT SCALE DRAWING | SCALE | | | 1/1 |
| DRAWING NO. | REV | 1 | | | | | | | | | | | | |
| | SHEET | 1/1 | | | | | | | | | | | | |
| MM (INCH) | DO NOT SCALE DRAWING | SCALE | | | | | | | | | | | | |
| | | 1/1 | | | | | | | | | | | | |

X-ON Electronics

Largest Supplier of Electrical and Electronic Components

Click to view similar products for [Fixed Terminal Blocks](#) category:

Click to view products by [Toponelec](#) manufacturer:

Other Similar products are found below :

[MBE-1512](#) [MBE-1520](#) [MBE-154](#) [MBE-156](#) [MBES-156](#) [MH-2512](#) [MHE-132](#) [MHE-163](#) [MI-254 \(35\)](#) [MPT-275](#) [ELM10110G](#) [BA311TU](#)
[BA411SU](#) [MV-254-D](#) [MV-255](#) [MV-493](#) [MVE-252](#) [MVE-253](#) [MVEB-153](#) [1705142](#) [1-796689-8](#) [1841320000](#) [S451](#) [29.007](#) [29.116](#) [30.204](#)
[30.503](#) [30.756](#) [30.853](#) [9872-0-00-15-00-00-33-0](#) [996750](#) [1710052](#) [20020316-G071B01LF](#) [20020327-C061B01LF](#) [29590](#) [30.652](#) [30.710](#)
[30.754](#) [30.757](#) [32.058](#) [37.206](#) [37.208](#) [37.507](#) [37.558](#) [38331-5812](#) [38331-8018](#) [38540-1910](#) [39.002](#) [MBE-1517](#) [MBE-153](#)