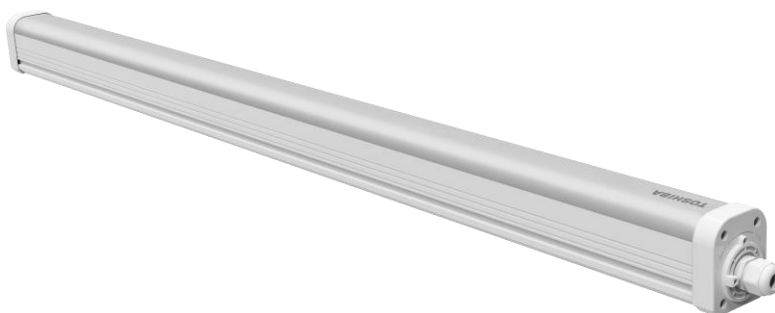


30W Triproof 1200

Authorized Licensee for TOSHIBA trademark



1. Specification:

A. General Data

Model	30W 1200 4000K	30W 1200 5000K
P/N	DELL-TP44030A2F022	DELL-TP54030A2F022
Westnet Code	00172938	00172939
Rated Voltage	230 VAC	230 VAC
Frequency	50 Hz	50 Hz
Rated Wattage	30 W	30 W
Deviation Tolerance of Rated Wattage	±10 %	±10 %
Displacement factor (cos φ1)*	0.9	0.9
Rated Current	0.137	0.137
Maximum Input Current	0.158	0.158
Start On	≤0.5	≤0.5
Warm up time	<1S	<1S
Dimmable	NO	NO
Beam Angle	120°	120°
Peak luminous intensity (cd)	No Claimed	No Claimed
R9 CRI	>1	>1
Survival factor	90%	90%
Safety requirements	CE	CE
Stroboscopic effect metric (SVM)**	≤ 0.9	≤ 0.9
Flicker metric (PstLM)**	≤ 1	≤ 1
Energy Efficiency Class(EEC)	E	E

Ingress protection rating	IP65	IP65
Impact resistance	IK08	IK08
Exchangeable LED Module	NO	NO
Photobiological Group	RG0	RG0
Safety class	II	II
Linkable connection	20	20
Type of Installation	Ceiling	Ceiling

B. Light Data

Color	Neutral White	Daylight
Color Temperature (CCT)	4000K	5000K
Total Lumen Output*	3900 lm	3900 lm
Color Rendering Index*	80	
Efficacy (Total)*	130 lm/W	
Color Consistency**	6 Step MacAdam Ellipse (6 SDCM)	

* tolerance +/- 10%

** 4000K center point (0.38177, 0.37959) ; 5000K center point (0.34464, 0.35506)

C. Lifetime

(Supplied Voltage: AC230V; Ambient Temperature: 25°C)

Lumen Maintenance Factor	70% of the rated lifetime
Rated Lifetime – L₇₀B₅₀ at 25°C	50,000 hrs
Lumen Maintenance factor	96%

D. Temperature Operation

Normal operation temperature	-20°C ~ 40°C
Relative Humidity	10% ~ 90%

E. Geometric Data

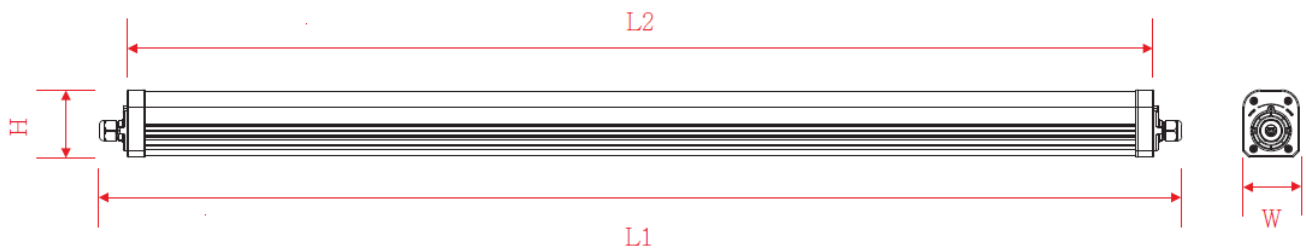
length	1210 ± 10 mm
width	63 ± 5 mm
thickness	78.5 ± 5 mm
Mass	1.15 kg

F. Environmental relevant materials

Mercury (Hg)	Comply with RoHS Directive 2011/65/EU
Lead (Pb)	
Cadmium(Cd)	
Hexavalent Chromium(Cr6+)	
Polybrominated Biphenyls(PBBs)	
Polybrominated Diphenyl Ethers(PBDEs)	
Bis (2-ethylhexyl) phthalate(DEHP)	
Butyl benzyl phthalate(BBP)	
Dibutyl phthalate(DBP)	
Diisobutyl phthalate(DIBP)	

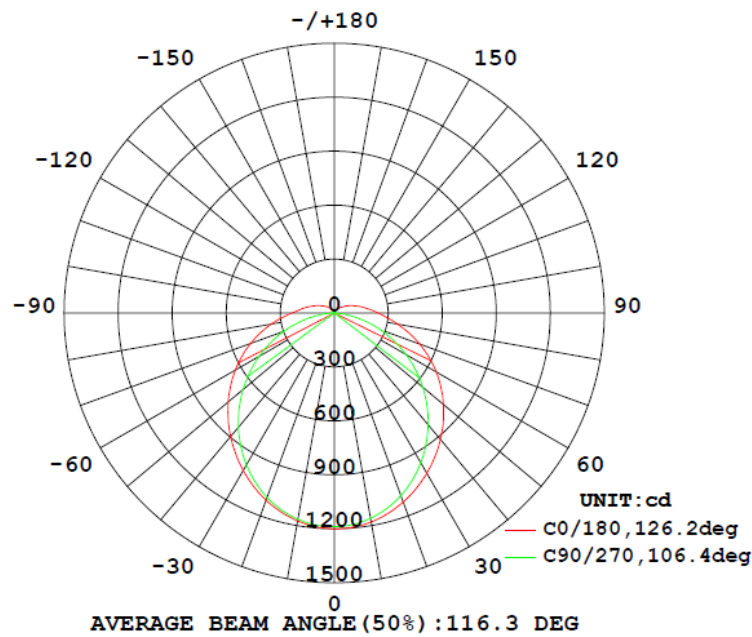
2. Outline Drawing

Unit : mm

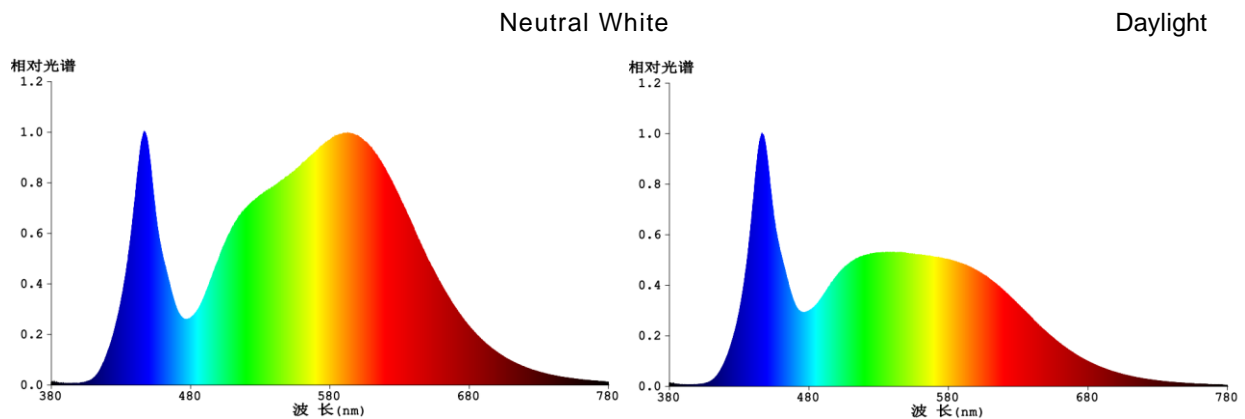


Model Number	L1	L2	W	H
DELL-TPx4030A2F022	1210	1150	63	75

3. Light Distribution Curve



4. Spectrum Distribution



5. Warnings

- Before replacing, turn off power and let lamp cool to avoid electrical shock or burn.
- Do not touch electronic components, electronic components maybe under high voltage.
- Do not stare into LED light beam
- The luminaire shall be installed by a qualified electrician and wired in accordance with the latest IEE electrical regulations or the national requirements.

6. Notes

All characteristics are estimated at room temperature (25°C), free air burning, base up burning position and at rated voltage. In view of the complex manufacturing process for light above for the technical LED parameters are merely statistical values that do not necessarily correspond to the actual technic individual products may vary from the typical values.

7. Logistic information

Model	4ft 30W Neutral White	4ft 30W Daylight
P/N	DELL-TP44030A2F022	DELL-TP54030A2F022
Pieces per pack	1	1
EAN code on pack	4711112386277	4711112386284
Size of pack	1235*82*72 mm	1235*82*72 mm
Weight per pack (G.W)	1.45 kg	1.45 kg
Packs per inner box	N/A	N/A
EAN code on inner box	N/A	N/A
ITF code on inner box	N/A	N/A
Size of inner box	N/A	N/A
Weight per inner box(G.W)	N/A	N/A
Packs per outer box	9	9
EAN code on outer box	N/A	N/A
ITF code on outer box	14711112386274	14711112386281
Size of outer box	1250*261*233 mm	
Weight per outer box(G.W)	13.5 kg	

DELL-TP44030A2F022

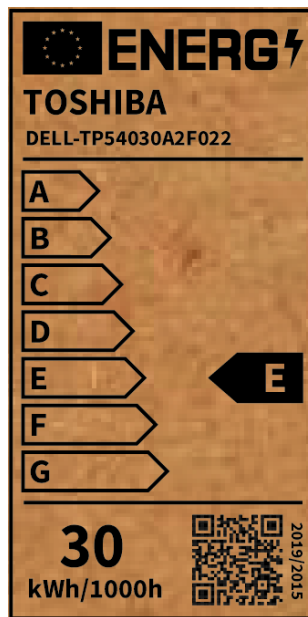
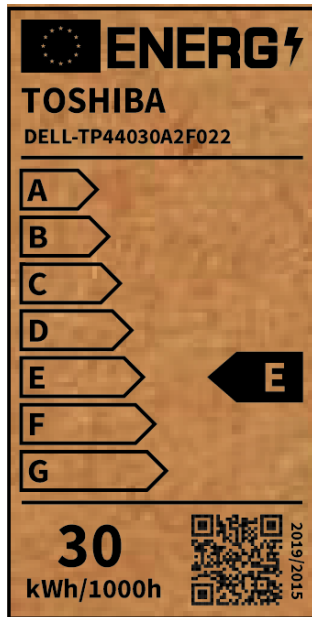


Package box

DELL-TP54030A2F022



8. ERP Label



9. Conformity

2014/35/EU; Low Voltage Directive	EN 60598-2-1:2021 used in conjunction with EN IEC 60598-1:2021 EN IEC 62031:2020 EN62493:2015
2014/30/EU; EMC Directive	EN IEC 55015: 2019+A11:2020 · EN61547:2009 · EN 61000-3-2: 2019+A1:2021 EN 61000-3-3:2013+A1:2019
2009/125/EC; ErP Directive	(EU) 2019/2015 · (EU) 2019/2020 · (EU) 2021/340 · (EU) 2021/341
2011/65/EU+(EU)2015/863; RoHS Directive	EN 50581: 2012

X-ON Electronics

Largest Supplier of Electrical and Electronic Components

Click to view similar products for [LED Replacement Lamps - Based LEDs](#) category:

Click to view products by [Toshiba](#) manufacturer:

Other Similar products are found below :

[LAPD-1A](#) [LAPD-1R](#) [LAPD-6W](#) [SSP-1156B153S12](#) [SSP-1157B156U12](#) [SSP-LXS110818BA](#) [560-0101F](#) [560-0103F](#) [LAPD-1W](#) [LAPD-6R](#)
[560-0104F](#) [SSP-LXC1283S24](#) [SSP-3MB96U12G](#) [1.90.690.684/0000](#) [560-0203F](#) [586-2206-205F](#) [SSP-LXS1826U16A](#) [24LS4-G1](#) [24LS4-R1](#)
[MF200-NFW5H](#) [MB403-W60-CW-BP](#) [387LP-A](#) [1819LS2-G-CG](#) [387LP-R](#) [387LP-B](#) [387LP-G](#) [24LS4-W1](#) [6S6LS155-CWR](#) [130MBLS-G-](#)
[CG](#) [5000404LAMP](#) [6S6LS130-CWW](#) [MF200-BCG12H](#) [MF200-NFR5H](#) [24L4-B1](#) [MF200-NKG120](#) [5SB-NFG24H](#) [MF200C-NFW28H](#)
[MF200-BCG24H](#) [6S6LS130-CWG](#) [MG200-NFR12H](#) [5SB-NKR120](#) [5000411LAMP](#) [MB403-R6AC-CR](#) [MG200-NWG120](#) [6S6LS120-CWG](#)
[8718699767655](#) [8718699772154](#) [CWA3S-24-CD](#) [64650](#) [SKU 217262](#)