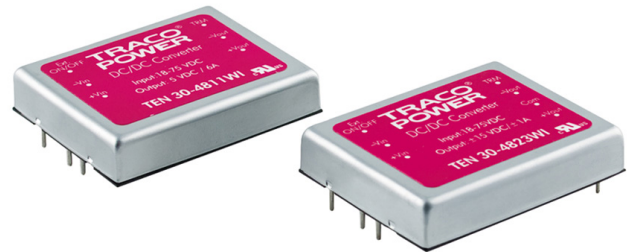


### Features

- ◆ Ultra wide 4:1 input voltage range
- ◆ Single output voltage models from 1.8 to 15 VDC
- ◆ Dual output voltage models
- ◆ Extended operating temperature range: -40°C to 85°C
- ◆ Under voltage lockout
- ◆ Remote On/Off
- ◆ Shielded metal case with insulated baseplate
- ◆ Optional heatsink
- ◆ Lead free design - RoHS compliant
- ◆ 3-year product warranty



The TEN 30WI series is a family of high performance 30W dc-dc converters featuring ultra wide 4:1 input voltage ranges in a compact low profile package with industry-standard footprint. A very high efficiency allows operating temperatures up to 85°C. A built-in filter for both input and output minimizes the need for external filtering. Further standard features include remote On/Off, output voltage trimming, over voltage protection, under voltage lockout and short circuit protection. Typical applications for these products are battery operated equipment and distributed power architectures in communication and industrial electronics, everywhere where isolated, tightly regulated voltages are required and space is limited on the PCB.

### Models

| Order code    | Input voltage range             | Output voltage | Output current max. | Efficiency typ. |
|---------------|---------------------------------|----------------|---------------------|-----------------|
| TEN 30-2408WI | 10 – 40 VDC<br>(nominal 24 VDC) | 1.8 VDC        | 8'000 mA            | 80 %            |
| TEN 30-2409WI |                                 | 2.5 VDC        | 8'000 mA            | 85 %            |
| TEN 30-2410WI |                                 | 3.3 VDC        | 6'000 mA            | 87 %            |
| TEN 30-2411WI |                                 | 5.0 VDC        | 6'000 mA            | 87 %            |
| TEN 30-2412WI |                                 | 12 VDC         | 2'500 mA            | 87 %            |
| TEN 30-2413WI |                                 | 15 VDC         | 2'000 mA            | 88 %            |
| TEN 30-2422WI |                                 | ±12 VDC        | ±1'250 mA           | 85 %            |
| TEN 30-2423WI |                                 | ±15 VDC        | ±1'000 mA           | 86 %            |
| TEN 30-4808WI | 18 – 75 VDC<br>(nominal 48 VDC) | 1.8 VDC        | 8'000 mA            | 81 %            |
| TEN 30-4809WI |                                 | 2.5 VDC        | 8'000 mA            | 86 %            |
| TEN 30-4810WI |                                 | 3.3 VDC        | 6'000 mA            | 87 %            |
| TEN 30-4811WI |                                 | 5.0 VDC        | 6'000 mA            | 88 %            |
| TEN 30-4812WI |                                 | 12 VDC         | 2'500 mA            | 87 %            |
| TEN 30-4813WI |                                 | 15 VDC         | 2'000 mA            | 88 %            |
| TEN 30-4822WI |                                 | ±12 VDC        | ±1'250 mA           | 86 %            |
| TEN 30-4823WI |                                 | ±15 VDC        | ±1'000 mA           | 87 %            |



**General Specifications**

|   |   |  |
|---|---|--|
| Temperature ranges  | - Operating<br>- Case temperature<br>- Storage  | -40°C to +85°C (with derating)<br>+100°C max.<br>-55°C to +105°C   |
| Thermal impedance   | - with heat-sink TEN-HS2<br>- without heat-sink | 8.24 K/Watt<br>10 K/Watt   |
| Humidity (non condensing)   |   | 95 % rel H max.  |
| Reliability, calculated MTBF (MIL-HDBK-217F, at +25°C, ground benign) |   | >750'000 h   |
| Isolation voltage (60sec.)  | - Input / Output                                | 1'500 VDC  |
| Isolation resistance  | - Input / Output                                | >1'000 M Ohm   |
| Isolation capacitance   | - Input / Output                                | 1000 pF max.   |
| Remote On/Off   | - On:<br>- Off:<br>- Off idle current:          | 3.5 ... 12 VDC or open circuit.<br>0 ... 1.2 VDC or short circuit pin 3 and pin 2<br>3 mA typ.   |
| Switching frequency   |   | 300 kHz typ. (pulse width modulation PWM)  |
| Vibration   |   | 10-55 Hz, 2G, 30 minutes along X,Y,Z   |
| Safety approvals  |   | UL 60950, IEC/EN 60950, compliance up to 60 VDC input voltage (SELV limit)<br><a href="http://www.tracopower.com/overview/ten30wi">www.tracopower.com/overview/ten30wi</a> |
| Environmental compliance  | - Reach<br>- RoHS                               | <a href="http://www.tracopower.com/info/reach-declaration.pdf">www.tracopower.com/info/reach-declaration.pdf</a><br>RoHS directive 20011/65/EU                             |

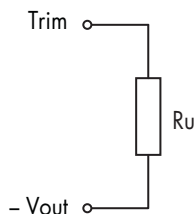
**Supporting documents:** [www.tracopower.com/overview/ten30wi](http://www.tracopower.com/overview/ten30wi)

**Note 1:**

In order to meet conducted emissions EN55022-A and EN55011-A a capacitor between +Vin and -Vin has to be installed. The capacitor should be capable to handle 1 A ripple current. A suggestion is KMF Series of Nippon chemi-con, 220µF/100V, ESR 90mOhm.

**Output Voltage Adjustment**

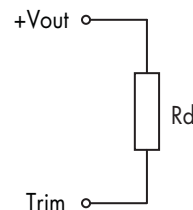
**Trim up**



**Ru [kohm]\***

|        |       |      |      |      |
|--------|-------|------|------|------|
| output | 1.8V  | 2.5V | 3.3V | 5.0V |
| +5%    | 1.2   | 4.3  | 6.8  | 4.7  |
| +10%   | 0.068 | 0.82 | 1.5  | 0.56 |
| output | 12V   | 15V  | ±12V | ±15V |
| +5%    | 47    | 47   | 27   | 33   |
| +10%   | 8.2   | 6.8  | 2.2  | 2.7  |

**Trim down**



**Rd [kohm]\***

|        |      |      |      |      |
|--------|------|------|------|------|
| output | 1.8V | 2.5V | 3.3V | 5.0V |
| -5%    | 1.8  | 6.8  | 8.2  | 5.6  |
| -10%   | 0.1  | 0.82 | 0.68 | 0.68 |
| output | 12V  | 15V  | ±12V | ±15V |
| -5%    | 56   | 56   | 33   | 39   |
| -10%   | 5.6  | 2.2  | 2.7  | 3.3  |

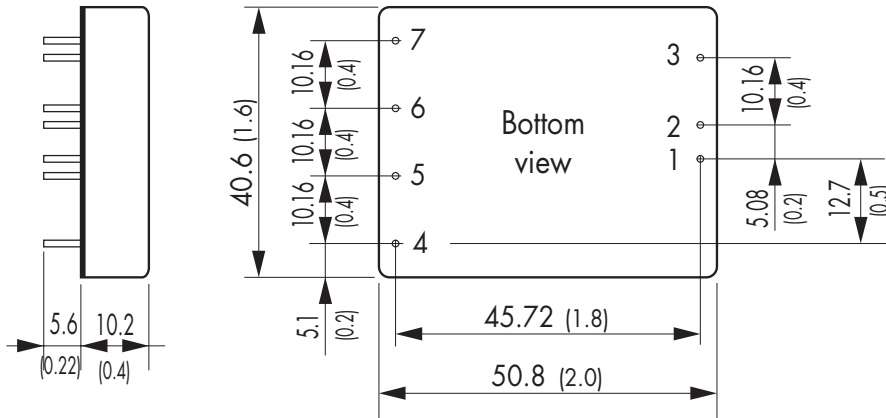
\*approximate values

All specifications valid at nominal input voltage, full load and +25°C after warm-up time unless otherwise stated.

**Physical Specifications**

|                       |                         |
|-----------------------|-------------------------|
| Casing material       | copper, nickel plated   |
| Baseplate material    | none conductive FR4     |
| Potting material      | epoxy (UL 94V-0 -rated) |
| Weight                | 48 g (1.69 oz)          |
| Soldering temperature | max. 265°C / 10 sec.    |

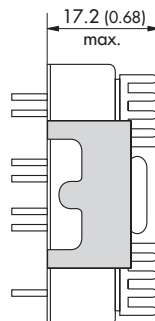
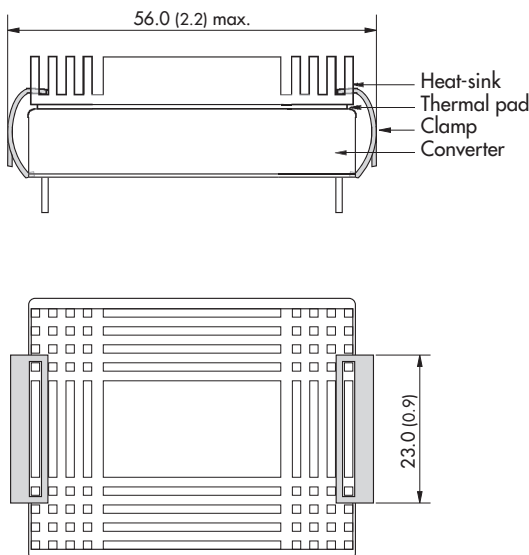
**Outline Dimensions**



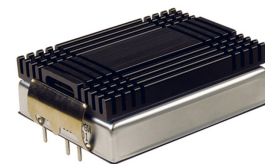
| Pin-Out |               |            |
|---------|---------------|------------|
| Pin     | Single        | Dual       |
| 1       | +Vin (Vcc)    | +Vin (Vcc) |
| 2       | -Vin (GND)    | -Vin (GND) |
| 3       | Remote On/Off |            |
| 4       | No pin        | +Vout      |
| 5       | +Vout         | Common     |
| 6       | -Vout         | -Vout      |
| 7       | Trim          |            |

Dimensions in [mm], ( ) = Inch  
 Pin diameter: 1.0 ±0.05 (0.02 ±0.002)  
 Pin pitch tolerances: ±0.35 (±0.014)  
 Case tolerances: ±0.5 (±0.02)

**Heat-sink TEN-HS2**



**Order code:** TEN-HS2  
 (cont.: heat-sink, thermal pad, 2 clamps)  
**Material:** Aluminum  
**Finish:** Anodic treatment (black)  
**Weight:** 19 g (0.67oz) (without converter)



**Note:**  
 The product label on converter has to be removed before mounting the heat-sink. For volume orders converters will be supplied with heat-sinks already mounted. Please contact factory for quotation. Separate heat-sinks are only available for prototypes and small quantity orders.

Specifications can be changed without notice! Make sure you are using the latest documentation, downloadable at [www.tracopower.com](http://www.tracopower.com)

## X-ON Electronics

Largest Supplier of Electrical and Electronic Components

*Click to view similar products for [Isolated DC/DC Converters](#) category:*

*Click to view products by [TRACO Power](#) manufacturer:*

Other Similar products are found below :

[ESM6D044440C05AAQ](#) [MI-220-IW](#) [MI-J22-IY](#) [FMD15.24G](#) [PSL486-7LR](#) [PSR152.5-7IR](#) [Q48T30020-NBB0](#) [AVO240-48S12B-6L](#)  
[AVO250-48S28B-6L](#) [NAN-0505](#) [HW-L16D](#) [JAHW100Y1](#) [217-1617-001](#) [22827](#) [SPB05C-12](#) [SQ24S15033-PS0S](#) [18952](#) [19-130041](#) [CE-1003](#) [CE-1004](#) [GQ2541-7R](#) [PSE1000DCDC-12V](#) [RDS180245](#) [MAU228](#) [419-2065-201](#) [449-2075-101](#) [J80-0041NL](#) [V24C12M100BL](#)  
[V24C5C100BL2](#) [V300C12C150BG](#) [V375C24E150BG](#) [VE-JW3-CY](#) [VI-241-EU](#) [419-2062-200](#) [419-2063-401](#) [419-2067-101](#) [419-2067-501](#)  
[419-2068-001](#) [DCG40-5G](#) [DFC15U48D15](#) [449-2067-000](#) [XGS-0512](#) [XGS-1205](#) [XGS-1212](#) [XGS-2412](#) [XGS-2415](#) [XKS-1215](#) [033456](#)  
[NCT1000N040R050B](#) [SPB05B-15](#)