

T-GD

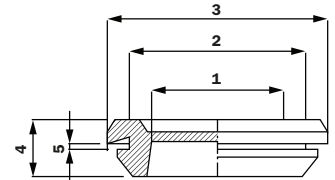


Trelleborg Singlegate T-GD-grommets are for leading through both low and medium power current cables as well various types of tubing.

The grommets are suitable for indoor and outdoor applications. The grommets fits to openings made with dimensions of PG.

Trelleborg Singlegate T-GD-grommets have alternative models for cables between diameters of 9 mm up to 69 mm. Wall thickness can be between 1 to 2 mm and bigger ones 1,5 to 3

mm. The design gives protection for limited ingress of dust and against water splashed from all directions. Models with customized preholes for cables and tubes are available.



Code	Material	Colour	Ral code	Flame resistance	Electrical number	Cable diameter	1	2	3	4	5
100174	TPE EPDM	Black		UL 94; V-0	1733412	9	9	15,5	20	7	1-2
100175	TPE EPDM	Black		UL 94; V-0	1733413	11	11	18,5	23	7	1-2
100176	TPE EPDM	Black		UL 94; V-0	1733414	13,5	13,5	20,5	25	7	1-2
100177	TPE EPDM	Black		UL 94; V-0	1733415	16	16	22,5	28	7	1-2
100178	TPE EPDM	Black		UL 94; V-0	1733416	21	21	28	35	9	1-2
100179	TPE EPDM	Black		UL 94; V-0	1733417	29	29	37	44	10	1-2
100180	TPE EPDM	Black		UL 94; V-0	1733418	36	36	47	54	12	1,5-3
100181	TPE EPDM	Black		UL 94; V-0	1733419	48	48	60	68	12	1,5-3
100182	TPE EPDM	Black		UL 94; V-0	1733420	53	53	64	75	12	1,5-3
100721	TPE EPDM	Black		UL 94; V-0	1733421	69	69	79	90	12	1,5-3

T-GDM



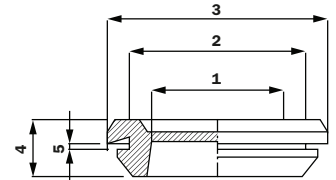
Trelleborg Singlegate T-GDM-grommets are for leading through both low and medium power current cables as well various types of tubing.

The grommets are suitable for indoor and outdoor applications. The grommets fits to openings made with dimensions of mm.

Trelleborg Singlegate T-GDM-grommets have alternative models for cables between diameters of 9 mm up to 69 mms. Wall thickness can be between 1 to 2 mms and bigger ones 1,5 to 3

mms. The design gives protection for limited ingress of dust and against water splashed from all directions. Models with customized preholes for cables and tubes are available.

Trelleborg Singlegate T-GDM -grommets are available as standard of materials on table below. As request also other colours and materials like silicones and EMC-models are available. More information of materials on page 17.



Code	Material	Colour	Ral code	Flame resistance	Electrical number	Cable diameter	1	2	3	4	5
103665	TPE EPDM	Black		UL 94; V-0	1733422	9	9	12,2	17	7	1-2
103933	TPE EPDM	Black		UL 94; V-0	1733423	11	11	16,2	21	7	1-2
100199	TPE EPDM	Black		UL 94; V-0	1733424	13,5	13,5	20,2	25	7	1-2
100200	TPE EPDM	Black		UL 94; V-0	1733425	16	16	25,2	31	7	1-2
102342	TPE EPDM	Black		UL 94; V-0	1733426	21	21	32,2	40	9	1-2
103523	TPE EPDM	Black		UL 94; V-0	1733427	29	29	40,2	48	10	1-2
104019	TPE EPDM	Black		UL 94; V-0	1733428	36	36	50,2	58	12	1,5-3
104021	TPE EPDM	Black		UL 94; V-0	1733429	48	48	60,2	68	12	1,5-3
104022	TPE EPDM	Black		UL 94; V-0	1733430	53	53	70,2	81	12	1,5-3
104023	TPE EPDM	Black		UL 94; V-0	1733431	69	69	80,2	91	12	1,5-3

X-ON Electronics

Largest Supplier of Electrical and Electronic Components

Click to view similar products for [Trelleborg](#) manufacturer:

Other Similar products are found below :

[100236](#) [MC1 IP55 RAL 9005](#) [MC1 IP55 RAL 9005 UL94 V-0](#) [100216](#) [MH25 IP55 RAL 9005](#) [100196](#) [MC2 IP55 RAL 9005 UL94 V-0](#)
[100223](#) [M20-80 IP54 RAL 7042](#) [100084](#) [103584](#) [M20-80 IP54 RAL 9005 UL94V-0](#) [100244](#) [MBA7300B11](#) [MC10 IP54 RAL 7035 UL94 V-](#)
[0](#) [100721](#) [103577](#) [104335](#) [MH10 IP55 RAL 9005](#) [104338](#) [RMC17](#) [MGD7 IP54 RAL 7035](#) [LMC35 IP44 RAL 7035](#) [MGD12 IP54 RAL 7035](#)
[MH27 IP55 RAL 9005](#) [104344](#) [MB4/10 IP55 RAL 9010 UL94V-0](#) [MB4/10 IP55 RAL 7035 UL94 V-0](#) [100238](#) [103608](#) [MBB0653B11](#)
[103589](#) [100188](#) [100182](#) [100194](#) [101301](#) [100200](#) [100307](#) [100176](#) [100292](#) [100177](#) [100174](#) [100187](#) [100180](#) [100744](#) [100181](#) [100179](#)
[100465](#) [100178](#) [100753](#)