

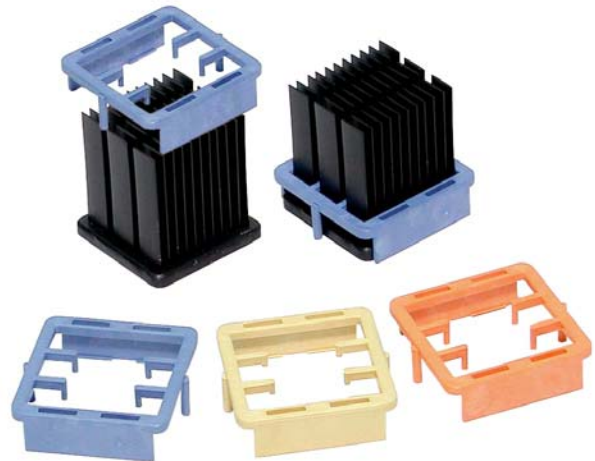


Model Name : MBA31001-15W/2.6

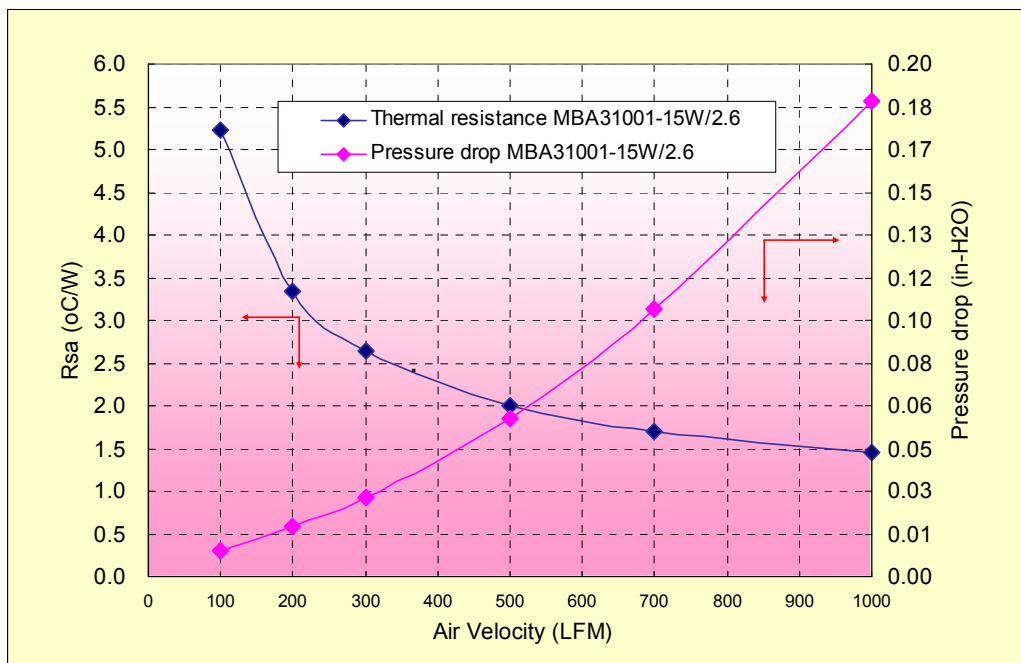
BGA Heat Sink For 31x31 Chip set

Specification:

1. Material:
Heat Sink : Aluminum 6063
Clip : Plastic (UL94-V0)
2. Heat Sink Dimension :
30.6*30.6*14.6 mm height (with base)
Base : 2.6mm, Fin height : 12mm
3. Weight: 15.3 gm
4. Technology: Precision Forging
5. Finish: Black or Nature Anodize
6. Clip available :
Chip set thickness
3.0-3.6mm - Yellow colored clip
1.4-2.0mm – Blue Colored clip
0.5-1.1mm – Orange colored clip



Performance Data:



Heat Source Size : Uniform



No.5, Min Lung Road, Yang Mei
Taiwan, R.O.C.
Tel : 886-3-4728155
Fax : 886-3-4725979
E-mail : sales@malico.com.tw

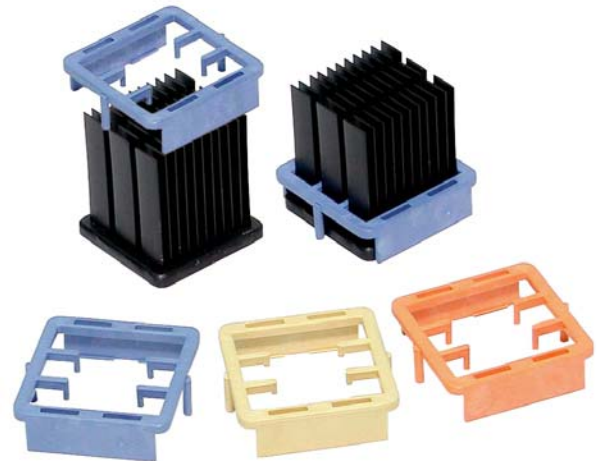


Model Name : MBA31001-28W/2.6

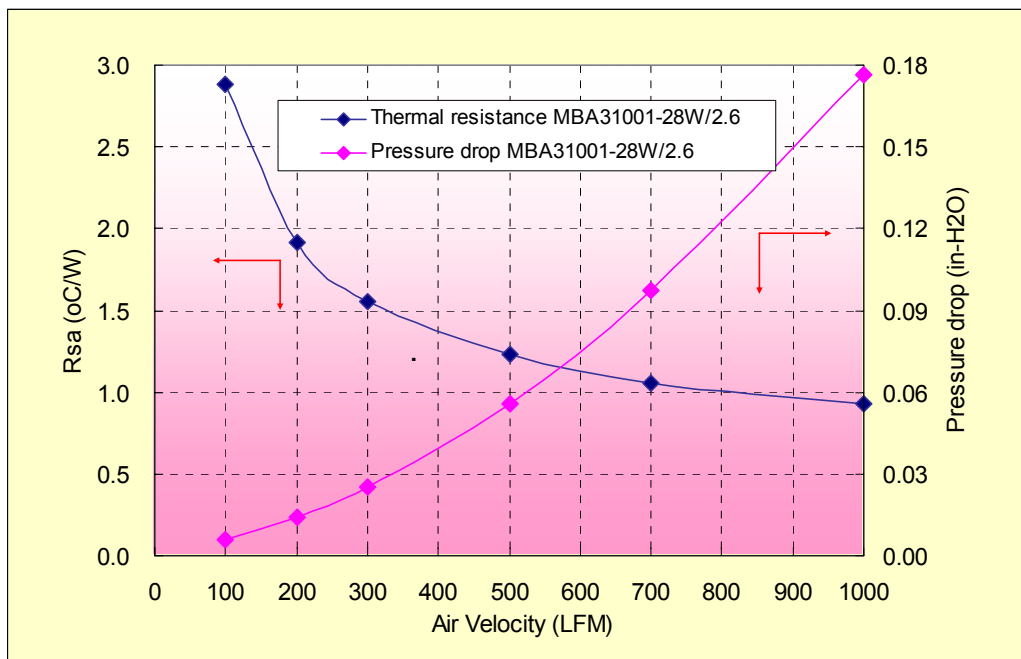
BGA Heat Sink For 31x31 Chip set

Specification:

1. Material:
Heat Sink : Aluminum 6063
Clip : Plastic (UL94-V0)
2. Heat Sink Dimension :
30.6*30.6*27.6 mm height (with base)
Base : 2.6mm, Fin height : 25mm
3. Weight: 21.1 gm
4. Technology: Precision Forging
5. Finish: Black or Nature Anodize
6. Clip available :
Chip set thickness
3.0-3.6mm - Yellow colored clip
1.4-2.0mm – Blue Colored clip
0.5-1.1mm – Orange colored clip



Performance Data:



Heat Source Size : Uniform



No.5, Min Lung Road, Yang Mei
Taiwan, R.O.C.
Tel : 886-3-4728155
Fax : 886-3-4725979
E-mail : sales@malico.com.tw

X-ON Electronics

Largest Supplier of Electrical and Electronic Components

Click to view similar products for [Heat Sinks](#) category:

Click to view products by [Trenz Electronic](#) manufacturer:

Other Similar products are found below :

[657-20ABPNE](#) [73452PPBA](#) [A22-4026](#) [120-1873-007](#) [218-40CTE3](#) [231-69PAB-15V](#) [231-75PAB-13V](#) [231-75PAB-15V](#) [253-122ABE-22](#)
[PSC22CB](#) [295-2](#) [CLP212SG](#) [D10100-28](#) [BDN183CBA01](#) [3-21053-4](#) [TX0506-1B](#) [LAE66A3CB](#) [511-3U](#) [73381PPBA](#) [73403PPBA](#) [8191-](#)
[E40](#) [510-12M](#) [529802B00000](#) [D10650-40T5](#) [6225B-MT6G](#) [ATS-54310K-C2-R0](#) [648-51AB](#) [657-20ABPESC](#) [679-25AG](#) [FK 212 CB SA](#)
[FK225 SA L1](#) [241404B91203G](#) [6801G](#) [680-5K](#) [7106DG/TR](#) [SK145 37 5STSTO220](#) [7109DG/TR](#) [TS-11042-CY](#) [S14K35G3S5](#) [8924G](#)
[7717-133DAP](#) [7717-26DAP](#) [4509](#) [SW25-4G](#) [CLP-215](#) [CLP-207](#) [D20850-40-T2](#) [APF30-30-10CB/A01](#) [V8508E](#) [268-85CTE](#)