

AWSP40-5

Description:

The AWSP40-5 is a single output power supply. This power supply is designed for a wide variety of applications where high reliability is desired, including applications for the industrial and telecommunications markets. Excellent performance specifications are provided, together with compliance to European EMC (EN55022, Class B and EN61000-3-2), and Low Voltage directive.

Specifications (@25C)

Input Characteristics:

| | |
|------------------------|--------------------------------------|
| Input Voltage: | 85-264Vac |
| Input Frequency Range: | 47-63Hz |
| Max Input Current: | 1.0A @ Vin (rated) |
| Max Inrush Current: | 20A@110Vac, 40A@220Vac at cold start |
| Leakage Current: | <3.5mA/240Vac |

Output Characteristics:

| | |
|---------------------------|--|
| Output Voltage: | 5Vdc |
| Output Current: | 7.6A |
| Output Power: | 40W |
| Adjustable Output Range: | ±10% |
| Ripple & Noise: | 75mV |
| Load Regulation: | ±1.0% |
| Line Regulation: | ±0.5% |
| Efficiency: | 72% |
| Temperature Drift: | <0.03%/°C (10-50°C) |
| Start-up Time: | 300ms max @ 230VAC |
| Hold-up Time: | 30ms min, 100% Load@230Vac |
| Rise-up Time: | 300ms max, 100% Load@230Vac |
| Over Current Protection: | At Load>120% 115/230Vac, Auto recovery |
| Over Voltage Protection: | Zener clamping at Vo>110%, Non auto recovery |
| Short Circuit Protection: | Short circuit protection available. Avoid short circuit >30 sec. |

General Specifications:

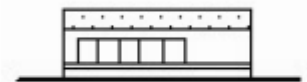
| | |
|-----------------------|--|
| Switching Frequency: | 50kHz |
| Dimension (LxWxH): | 129x98x38mm |
| Weight: | 360g net, 400g gross |
| Cooling: | Natural Convection |
| Isolation Resistance: | I/P—O/P, I/P—FG, O/P—FG: 500VDC/100Mohms |
| Dielectric Strength: | I/P—O/P: 3kVac; I/P—FG: 2.5kVac; O/P—FG: 0.5kVac 1 min |
| Warranty: | 2 years |

Environmental Specifications:

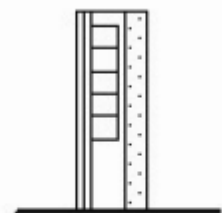
| | |
|------------------------|---|
| Operating Temperature: | -10° to 60°C |
| Operating Humidity: | 20 to 90% RH, non-condensing |
| Storage Temperature: | -25 to 75°C |
| Storage Humidity: | 10 to 95% RH, non-condensing |
| Vibration: | 10-55Hz, 2G 1min/cycle, period of 60min, each X, Y & Z axis |

EMC & Safety Specifications:

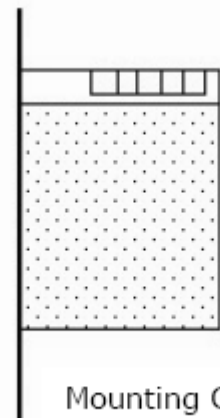
| | |
|--------------------------|--|
| EMC Emissions: | Conforms to EN55022, VCCI, CISPR22 Class B (Conducted & Radiated); IEC-61000-4-2, 61000-4-4, 61000-4-5, 61000-4-11 |
| ESD Susceptibility: | EN61000-4-2 (15kV/8kV) |
| Radiated Susceptibility: | EN61000-4-3 (3Vm ¹) |
| Fast Burst: | EN61000-4-4 (2kV) |
| Surge: | EN61000-4-5 (1kV/2kV) |
| Safety Approvals: | UL60950 (UL File No: E204980) |



Mounting A

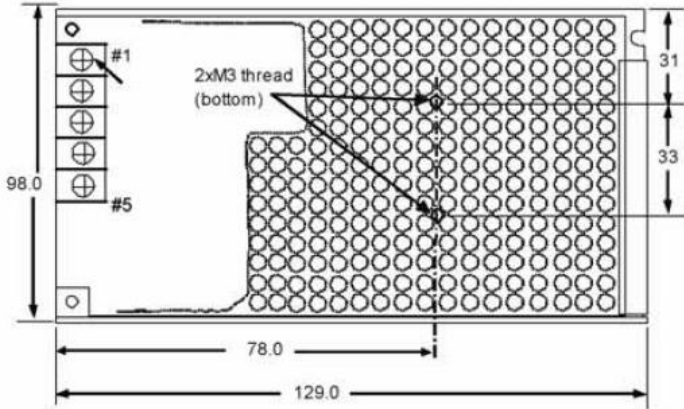


Mounting B



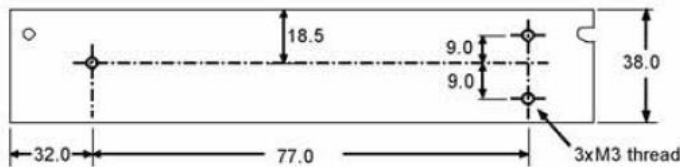
Mounting C

Outline Dimensions (mm):



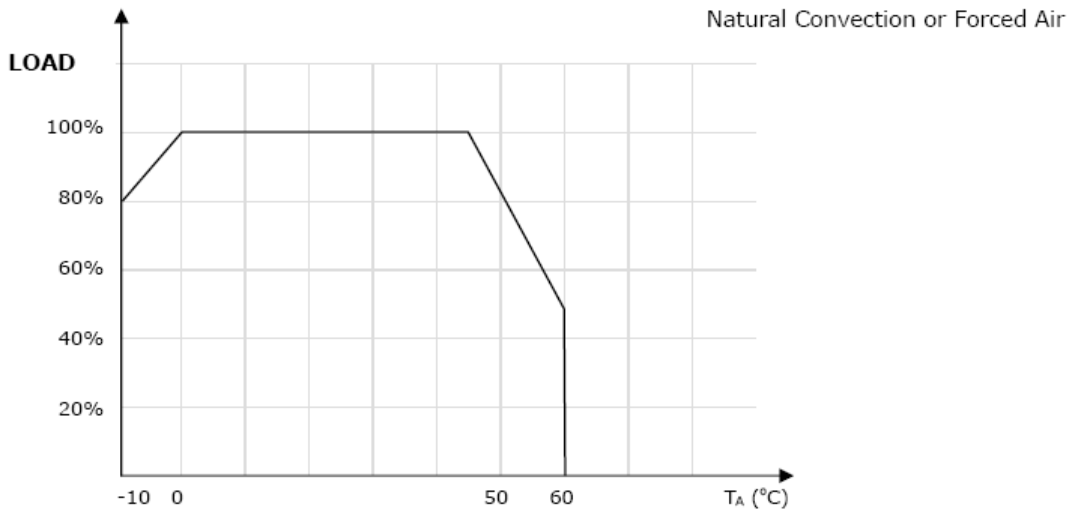
TERMINAL SCREW ASSIGNMENT

- # 1,2 : AC INPUT
- # 3 : FG (FRAME GROUND)
- # 4 : DC OUTPUT -V
- # 5 : DC OUTPUT +V



Unit : mm
Tolerance : +/-1.0mm

Derating Curve:



Connector Types:

Input: Screw Terminals

Output: Screw Terminals

RoHS Compliance: As of manufacturing date February 2016, all standard products meet the requirements of 2015/863/EU, known as the RoHS 3 initiative.

* Upon printing, this document is considered "uncontrolled". Please contact Triad Magnetics' website for the most current version.

X-ON Electronics

Largest Supplier of Electrical and Electronic Components

Click to view similar products for [Switching Power Supplies](#) category:

Click to view products by [Triad](#) manufacturer:

Other Similar products are found below :

[70841011](#) [73-551-0005](#) [73-551-0048](#) [PS3E-B12F](#) [PS3E-E12F](#) [AAD600S-4-OP](#) [R22095](#) [KD0204](#) [9021](#) [LDIN100150](#) [LPM000-BBAR-01](#)
[LPX17S-C](#) [EVS57-10R6/R](#) [FP80](#) [FRV7000G](#) [22929](#) [PS3E-F12F](#) [CQM1IA121](#) [40370121900](#) [VI-PU22-EXX](#) [40370121910](#) [LDIN5075](#)
[LPM615-CHAS](#) [LPX140-C](#) [09-160CFG](#) [70841025](#) [VPX3000-CBL-DC](#) [VI-LUL-IU](#) [LPM000-BBAR-05](#) [LPM000-BBAR-08](#) [LPM124-](#)
[OUTA1-48](#) [LPM000-BBAR-07](#) [LPM109-OUTA1-10](#) [LPM616-CHAS](#) [08-30466-1055G](#) [08-30466-2175G](#) [08-30466-2125G](#) [DMB-EWG](#)
[TVQF-1219-18S](#) [6504-226-2101](#) [CQM1IPS01](#) [SP-300-5](#) [CQM1-IPS02](#) [VI-MUL-ES](#) [22829](#) [08-30466-0065G](#) [VI-RU031-EWWX](#) [08-30466-](#)
[0028G](#) [EP3000AC48INZ](#) [VP-C2104853](#)