

CME2425-7

Description:

Highly dependable Triad common mode EMI suppression inductors are used in various types of power supplies to eliminate noise common to all lines. These units also provide effective differential mode filtering. Meeting VDE, IEC, UL and CSA requirements, they minimize AC line transmitted interference often created by high frequency switching power supplies.

Construction:

Constructed with UL rated 130°C materials.

Electrical Specifications (@20°C):

Min. Inductance*	Amps RMS	Max. DC (Ω) Resistance	Min. Leakage
27.7 mH	.63	.820	144.0 μH

*inductance per winding.

Operating Temperature: -40° to +80°C

Dimensions:

A	B	C	D
1.050	1.075	0.092-0.187	1.050

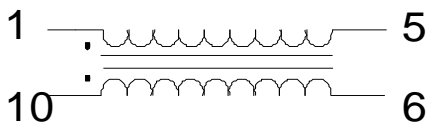
Note: 1. Pin diameter: 0.029 SQ.

2. Units in inches.

3. Rated current yields approximately 40°C temperature rise.

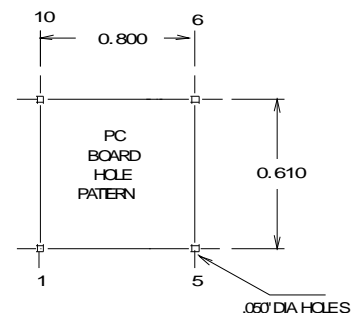
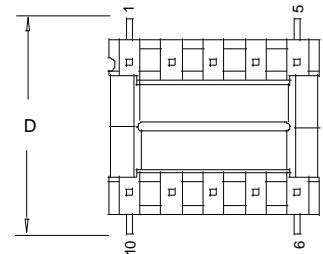
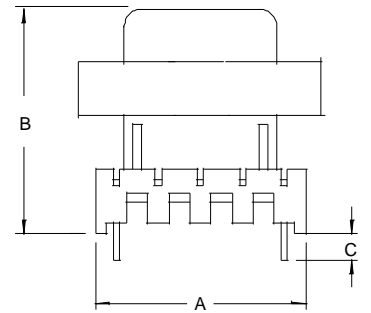
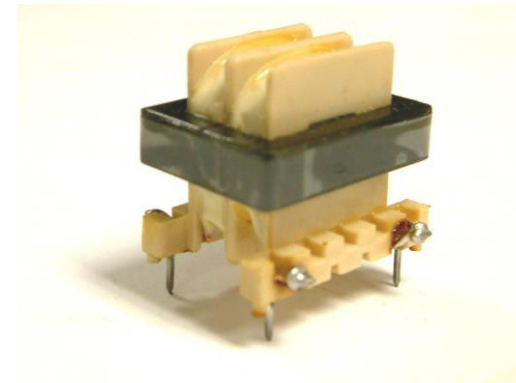
4. Weight: .154 lbs.

Schematic:



RoHS Compliance: As of manufacturing date February 2016, all standard products meet the requirements of 2015/863/EU, known as the RoHS 3 initiative.

*Upon printing, this document is considered "uncontrolled". Please contact Triad Magnetics website for the most current version. For soldering and washing information please see <http://www.triadmagnetics.com/faq.html>



X-ON Electronics

Largest Supplier of Electrical and Electronic Components

Click to view similar products for [Common Mode Chokes / Filters](#) category:

Click to view products by [Triad](#) manufacturer:

Other Similar products are found below :

[74279408](#) [PE-62911NL](#) [PE-64683](#) [ST6118T-R](#) [T8114NLT](#) [RD5122-10-6M0](#) [TCM0806G-350-2P-T](#) [TCM0806G-650-2P-T](#) [IND-0110](#)
[UAL21V07012500](#) [UAL21VR0802000](#) [UAL24VR06500CH](#) [UALSC023000000](#) [UALSC1020JH000](#) [UALSC1520JH000](#)
[UALSU16VD30030](#) [UALSU16VD40010](#) [UALSU9H0305000](#) [UALSU9HF060300](#) [UALSU9VD070100](#) [36-00037](#) [5701610000](#)
[UALW21HS072450](#) [UALSU9VD070400](#) [UALSU9HF050500](#) [UALSU9H0208000](#) [UALSCF25081300](#) [UAL24VK06450CH](#)
[PLT10HH501100PNB](#) [PLT10HH401100PNB](#) [PLT10HH1026R0PNB](#) [PE-67531](#) [EXC-X4CH120X](#) [TLH10UB 113 0R5](#) [2752041447](#)
[2752045447](#) [CMS3-11-R](#) [7351V](#) [CMF16-153131](#) [744252510](#) [T8116NLT](#) [FE2X10-4-2NL](#) [744253200](#) [744253101](#) [744252220](#) [TX8111NLT](#)
[UAL30VR3500470](#) [CTX01-19077-R](#) [T8003NLT](#) [CTX01-13663](#)