

FIT106-6

Description:

The FIT106-6 toroidal inductor is specifically designed to minimize transients. It stores energy and therefore, conditions the output signal by leveling the current waveform providing a more stable current supply. Generally used in high frequency circuits, its standard design provides an economical solution in differential mode applications or as an output inductor.

Electrical Specifications (@25C):

Min. Inductance (μ H)		Rated	Max
No Bias	At Bias	DC Amps	DCR (m Ω)
70.05	35.30	9.7	24.0

Note: No Bias inductance measured at .25V, 10KHZ.

Dimensions:

A	B	C	D	E	F	G
1.30	.725	1.40	.500	.724	.125	.045 \pm .003

Units: In inches

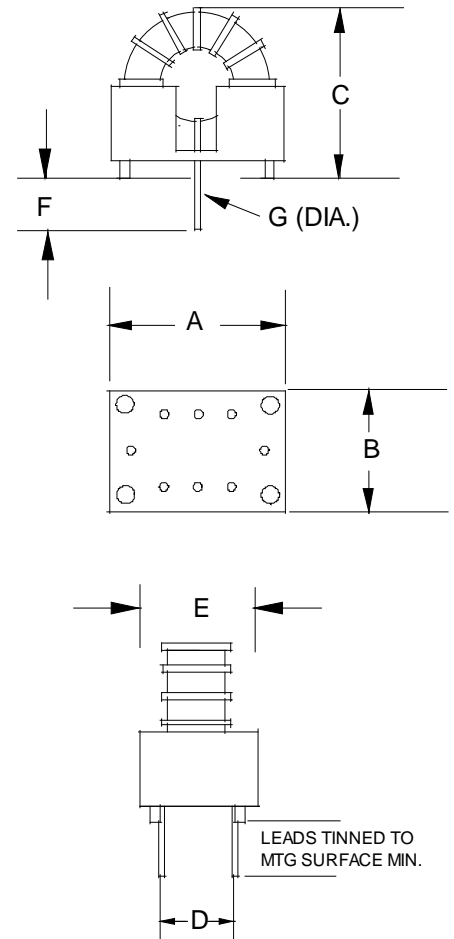
Weight: .090 lbs.

Technical Notes:

1. Nominal inductance values are typically 10% higher than minimal rating.
2. Biased inductance measured at rated DC amps.
3. Operation at rated current yields approximately 40°C temperature rise over 20°C ambient.

RoHS Compliance: As of manufacturing date February 2005, all standard products meet the requirements of 2011/65/EU, known as the RoHS initiative.

*Upon printing, this document is considered "uncontrolled". Please contact Triad Magnetics website for the most current version. For soldering and washing information please see <http://www.triadmagnetics.com/faq.html>



X-ON Electronics

Largest Supplier of Electrical and Electronic Components

Click to view similar products for [Fixed Inductors](#) category:

Click to view products by [Triad](#) manufacturer:

Other Similar products are found below :

[CR43NP-680KC](#) [CR54NP-820KC](#) [CR54NP-8R5MC](#) [CTX32CT-100](#) [70F224AI](#) [MGDQ4-00004-P](#) [MHL1ECTTP18NJ](#) [MHL1JCTTD12NJ](#)
[PE-51506NL](#) [PE-53601NL](#) [PE-53602NL](#) [PE-53630NL](#) [PE-53824SNLT](#) [PE-92100NL](#) [PG0434.801NLT](#) [PG0936.113NLT](#) [9310-16](#) [PM06-2N7](#) [PM06-39NJ](#) [A01TK](#) [1206CS-471XJ](#) [HC2-2R2TR](#) [HC2LP-R47-R](#) [HC3-2R2-R](#) [1206CS-151XG](#) [RCH664NP-140L](#) [RCH664NP-4R7M](#)
[RCH8011NP-221L](#) [RCP1317NP-332L](#) [RCP1317NP-391L](#) [RCR1010NP-470M](#) [RCR110DNP-331L](#) [DH2280-4R7M](#) [DS1608C-106](#) [ASPI-4020HI-R10M-T](#) [B10TJ](#) [B82477P4333M](#) [B82498B3101J000](#) [B82498B3680J000](#) [ELJ-RE27NJF2](#) [1812CS-153XJ](#) [1812CS-183XJ](#) [1812CS-223XJ](#) [1812LS-104XJ](#) [1812LS-105XJ](#) [1812LS-124XJ](#) [1812LS-154XJ](#) [1812LS-223XJ](#) [1812LS-224XJ](#) [1812LS-563XJ](#)