

### FIT50-6

#### Description:

The FIT50-6 toroidal inductor is specifically designed to minimize transients. It stores energy and therefore, conditions the output signal by leveling the current waveform providing a more stable current supply. Generally used in high frequency circuits, its standard design provides an economical solution in differential mode applications or as an output inductor.

#### Electrical Specifications (@25C):

Min. Inductance (μH)		Rated	Max
No Bias	At Bias	DC Amps	DCR (mΩ)
12.50	6.75	6.8	14.0

**Note:** No Bias inductance measured at .25V, 10KHZ.

#### Dimensions:

A	B	C	D	E	F	G
.700	.475	.750	.300	.474	.125	.036±.003

Units: In inches

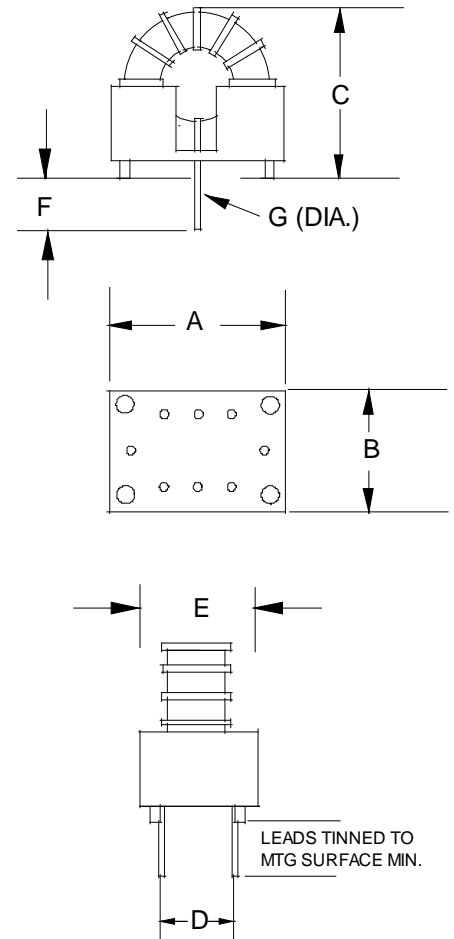
**Weight:** .012 lbs.

#### Technical Notes:

1. Nominal inductance values are typically 10% higher than minimal rating.
2. Biased inductance measured at rated DC amps.
3. Operation at rated current yields approximately 40°C temperature rise over 20°C ambient.

**RoHS Compliance:** As of manufacturing date February 2005, all standard products meet the requirements of 2011/65/EU, known as the RoHS initiative.

\*Upon printing, this document is considered "uncontrolled". Please contact Triad Magnetics website for the most current version. For soldering and washing information please see <http://www.triadmagnetics.com/faq.html>



## X-ON Electronics

Largest Supplier of Electrical and Electronic Components

*Click to view similar products for [Fixed Inductors](#) category:*

*Click to view products by [Triad](#) manufacturer:*

Other Similar products are found below :

[CR43NP-680KC](#) [CR54NP-820KC](#) [CR54NP-8R5MC](#) [CTX32CT-100](#) [70F224AI](#) [MGDQ4-00004-P](#) [MHL1ECTTP18NJ](#) [MHL1JCTTD12NJ](#)  
[PE-51506NL](#) [PE-53601NL](#) [PE-53602NL](#) [PE-53630NL](#) [PE-53824SNLT](#) [PE-62892NL](#) [PE-92100NL](#) [PG0434.801NLT](#) [PG0936.113NLT](#)  
[9310-16](#) [PM06-2N7](#) [PM06-39NJ](#) [A01TK](#) [1206CS-471XJ](#) [HC2-2R2TR](#) [HC2LP-R47-R](#) [HC3-2R2-R](#) [1206CS-151XG](#) [RCH664NP-140L](#)  
[RCH664NP-4R7M](#) [RCH8011NP-221L](#) [RCP1317NP-332L](#) [RCP1317NP-391L](#) [RCR1010NP-470M](#) [RCR110DNP-331L](#) [DH2280-4R7M](#)  
[DS1608C-106](#) [ASPI-4020HI-R10M-T](#) [B10TJ](#) [B82477P4333M](#) [B82498B3101J000](#) [B82498B3680J000](#) [ELJ-RE27NJF2](#) [1812CS-153XJ](#)  
[1812CS-183XJ](#) [1812CS-223XJ](#) [1812LS-104XJ](#) [1812LS-105XJ](#) [1812LS-124XJ](#) [1812LS-154XJ](#) [1812LS-223XJ](#) [1812LS-224XJ](#)