

### N-48X

#### Electrical Specifications (@25°C)

1. Maximum Power: 15 VA
2. Input Voltage: 115 V, 50 / 60 Hz
3. Output Voltage: 115V  $\pm$  5%
4. Full Secondary Load: 0.13 Amps RMS
5. Voltage Regulation: 20 % TYP @ full load to no load

#### Description:

The N-48X is a power transformer for isolating equipment from direct connection to the powerline. The primary and secondary coils are concentrically wound providing excellent magnetic coupling. Having good magnetic coupling between windings helps reduce leakage flux and phase shift.

#### Safety:

These units are designed with 1500V isolation between winding to winding and between winding and core. Materials and construction are rated for Class B insulation system.

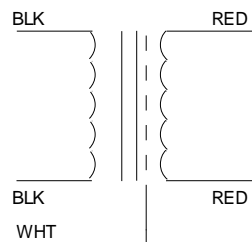
#### Dimensions: Unit: In inches

A	B	C	D
1.937	3.312	2.00	2.812

Weight: 1.35 lbs

Connections: 7.0 $\pm$ 1" leads, 0.250 $\pm$ 0.062" Skin & Tin

#### Schematic:



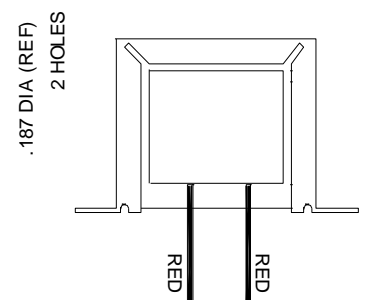
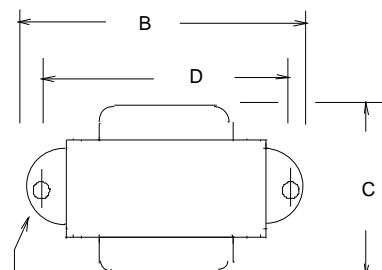
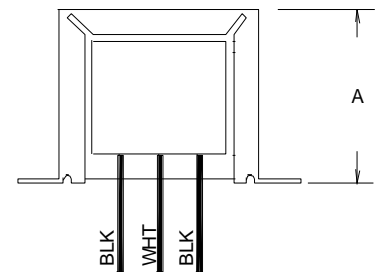
**Input:** Blk to Blk

**Output:** Red to Red

**Shield:** Wht

**RoHS Compliance:** As of manufacturing date February 2016, all standard products meet the requirements of 2015/863/EU, known as the RoHS 3 initiative.

\* Upon printing, this document is considered "uncontrolled". Please contact Triad Magnetics' website for the most current version.



## **X-ON Electronics**

Largest Supplier of Electrical and Electronic Components

*Click to view similar products for [Power Transformers](#) category:*

*Click to view products by [Triad](#) manufacturer:*

Other Similar products are found below :

[ET-030A](#) [F-102X](#) [F-120X](#) [F-14X-1](#) [F-181U](#) [F-18A](#) [F-199U](#) [F-19X](#) [F-202U](#) [F-204U](#) [F-206U](#) [F-227X](#) [F-238U](#) [F-239U-1](#) [F-23U](#) [F24-250-B](#)  
[F-242U](#) [F-245U](#) [F-264U](#) [F-265U](#) [F-267U](#) [F-281U](#) [F-283U](#) [F-290X](#) [F-295Z](#) [F-296Z](#) [F-298Z](#) [F-3143P](#) [F-3298Z](#) [F-33U](#) [F-346X](#) [F-35U](#) [F-](#)  
[364U](#) [F-392A](#) [F-395X](#) [F-397U](#) [F-412X](#) [F-47U](#) [F-55X-1](#) [F-60U](#) [F-68U](#) [F-71U](#) [F-72Z](#) [F-74U](#) [F-83A](#) [F-84AC](#) [F-85U](#) [F-86U](#) [F-9U](#) [PCT-02](#)