



**TIGER EYE™**  
DISCRETE

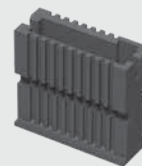


CC03R-2830-01-G

ISDF-07-D-M



TSDF-10-D-S



T1M44-L-2830-01-G

(1.27 mm) .050"

ISDF, CC03R, CC03M, TSDF, T1M44-L, T1M44-R SERIES

# DISCRETE WIRE COMPONENTS & TOOLING

## SPECIFICATIONS

For complete specifications see [www.samtec.com?ISDF](http://www.samtec.com?ISDF), [www.samtec.com?CC03R](http://www.samtec.com?CC03R) or [www.samtec.com?CC03M](http://www.samtec.com?CC03M)

**Insulator Material:**  
Black LCP  
**Contact Material:**  
BeCu

## RECOGNITIONS

For complete scope of recognitions see [www.samtec.com/quality](http://www.samtec.com/quality)



FILE NO. E111594

## TOOLING

- Hand Tool:  
CAT-HT-203-2830-12
- Clamp for mounting hand tool to work table:  
CAT-HT-MNT-01
- Mini Applicator:  
CAT-MC-203-2830-XX-01
- Extraction Tool:  
CAT-EX-169-01

**Note:**  
Some sizes, styles and options are non-standard, non-returnable.

TYPE	POSITIONS PER ROW	ROW OPTION	OPTION	TYPE	WIRE GAUGE	01	PLATING
ISDF = Housing	-03, -04, -05, -07, -10, -15, -20, -25, -40, -50 (Standard sizes)	-S = Single Row -D = Double Row	-M = Metal Retention Latch -S = Screw Down (-D only)	CC03R = Contact, Full Reel (35,000 Parts per Reel) CC03M = Contact, Mini Reel (1,000-5,000 Parts per Reel)	-2830 = 28 to 30 AWG		-GF = Gold flash on contact -G = 10 μm (0.25 μm) Gold on contact

Technical drawings showing dimensions for ISDF, CC03R, CC03M, and TSDF components. Dimensions include: (1.27) .050, (0.38) .015, (2.03) .080, (6.35) .250, (5.08) .200, (11.18) .440, (2.00) .079 DIA, (3.68) .145, (1.27) .050, (1.78) .070, (15.37) .605, (0.38) .015, (1.27) .050 DIA, (3.81) .150, (1.91) .075, (3.81) .150, (6.32) .249, (2.03) .080, (6.10) .240, (14.26) .562, (6.05) .238, (0.46) .018 DIA.



## SPECIFICATIONS

For complete specifications see [www.samtec.com?TSDF](http://www.samtec.com?TSDF), [www.samtec.com?T1M44-L](http://www.samtec.com?T1M44-L) or [www.samtec.com?T1M44-R](http://www.samtec.com?T1M44-R)

**Insulator Material:**  
Black LCP  
**Contact Material:**  
BeCu

## TOOLING

- Hand Tool:  
CAT-HT-203-2832-11
- Mini Applicator  
CAT-MC-144-2830-XX-01
- Extraction Tool:  
CAT-EX-169-01

**Note:**  
Some sizes, styles and options are non-standard, non-returnable.

TYPE	POSITIONS PER ROW	ROW OPTION	S	TYPE	WIRE GAUGE	01	PLATING
TSDF = Housing	-03, -04, -05, -07, -10, -15, -20, -25, -40, -50 (Standard sizes)	-D = Double Row		T1M44-L = Contact, Loose T1M44-R = Contact, Full Reel (35,000 Parts per Reel)	-2830 = 28 to 30 AWG		-G = 10 μm (0.25 μm) Gold on contact

Technical drawings showing dimensions for TSDF and T1M44-L/R components. Dimensions include: (1.27) .050, (2.54) .100, (1.27) .050, (6.10) .240, (14.26) .562, (6.05) .238, (0.46) .018 DIA, (3.81) .150.

Due to technical progress, all designs, specifications and components are subject to change without notice.

[WWW.SAMTEC.COM](http://WWW.SAMTEC.COM)

All parts within this catalog are built to Samtec's specifications. Customer specific requirements must be approved by Samtec and identified in a Samtec customer-specific drawing to apply.

## X-ON Electronics

Largest Supplier of Electrical and Electronic Components

*Click to view similar products for [Headers & Wire Housings](#) category:*

*Click to view products by [Samtec](#) manufacturer:*

Other Similar products are found below :

[95000-104TRLF](#) [10135584-644402LF](#) [DF62W-EP2022PCA](#) [95000-106TRLF](#) [DF62W-2022SCA](#) [DF62W-EP2022PC](#) [2203348](#) [DF62W-2022SC](#) [1084018](#) [1029039](#) [1084017](#) [802-10-012-10-002000](#) [1112640](#) [1112639](#) [000-34000](#) [0009482033](#) [0009507031](#) [57102-S06-03LF](#) [57202-S52-04LF](#) [PCN6-15S-2.5E](#) [0039019024](#) [58102-G61-06LF](#) [582553-1](#) [0009485154](#) [0009508121](#) [0022285053](#) [0050291907](#) [018731A](#) [LY20-4P-DT1-P1E-BR](#) [02.125.8002.8](#) [60101931](#) [60598-1 \(Cut Strip\)](#) [M1625-3R/100](#) [61062-3](#) [61082-181009](#) [636-1427](#) [638009-1](#) [641938-9](#) [641991-4](#) [644168-1](#) [647662-1](#) [65039-019ELF](#) [65781-047](#) [65817-002LF](#) [65817-015LF](#) [65863-015LF](#) [66207-023LF](#) [67016-026LF](#) [67046-001LF](#) [67095-007LF](#)