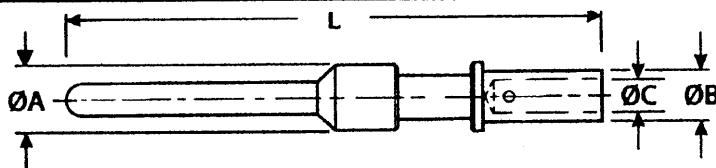


# F80 Crimp Contacts

## Pin

Metric  
Imperial



Contact Size AWG (Metric)	Part Number	A	B	C	Conductor CSA mm <sup>2</sup>	L
16S/20	ABB16S/20KPKF80	3,20	2,65	1,10	0,50/0,75	26,60
		<b>0.126</b>	<b>0.104</b>	<b>0.043</b>		<b>1.047</b>
16S/18	ABB16S/18KPKF80	3,20	2,30	1,25	0,75/0,93	26,60
		<b>0.126</b>	<b>0.091</b>	<b>0.049</b>		<b>1.047</b>
16S (15S)	ABB16SKPKF80	3,20	2,75	1,75	0,93/1,50	26,60
		<b>0.126</b>	<b>0.108</b>	<b>0.069</b>		<b>1.047</b>
16S/14	ABB16S/14KPKF80	3,20	2,90	1,80	1,94/2,08	26,60
		<b>0.126</b>	<b>0.114</b>	<b>0.071</b>		<b>1.047</b>
16/22	ABB16/22KPKF80	3,20	2,30	0,90	0,22/0,34	31,75
		<b>0.126</b>	<b>0.091</b>	<b>0.035</b>		<b>1.250</b>
16/20	ABB16/20KPKF80	3,20	2,65	1,10	0,50/0,75	31,75
		<b>0.126</b>	<b>0.104</b>	<b>0.043</b>		<b>1.250</b>
16/18	ABB16/18KPKF80	3,20	2,30	1,25	0,75/0,93	31,75
		<b>0.126</b>	<b>0.091</b>	<b>0.049</b>		<b>1.250</b>
16 (15)	ABB16KPKF80	3,20	2,75	1,75	0,93/1,50	31,75
		<b>0.126</b>	<b>0.108</b>	<b>0.069</b>		<b>1.250</b>
16/14	ABB16/14KPKF80	3,20	2,90	1,80	1,94/2,08	31,75
		<b>0.126</b>	<b>0.114</b>	<b>0.071</b>		<b>1.250</b>
16/12	ABB16/12KPKF80	3,20	3,80	2,50	2,50/3,00	31,75
		<b>0.126</b>	<b>0.150</b>	<b>0.098</b>		<b>1.250</b>
12/20	ABB12/20KPKF80	4,80	2,65	1,10	0,50/0,75	37,50
		<b>0.189</b>	<b>0.104</b>	<b>0.043</b>		<b>1.476</b>
12/18	ABB12/18KPKF80	4,80	2,30	1,25	0,75/0,93	37,50
		<b>0.189</b>	<b>0.091</b>	<b>0.049</b>		<b>1.476</b>
12/16 (25/15)	ABB12/16KPKF80	4,80	2,75	1,75	0,93/1,50	37,50
		<b>0.189</b>	<b>0.108</b>	<b>0.069</b>		<b>1.476</b>
12/14	ABB12/14KPKF80	4,80	2,90	1,80	1,94/2,08	37,50
		<b>0.189</b>	<b>0.114</b>	<b>0.071</b>		<b>1.476</b>
12 (25)	ABB12KPKF80	4,80	3,80	2,50	2,50/3,00	37,50
		<b>0.189</b>	<b>0.150</b>	<b>0.098</b>		<b>1.476</b>
12/10	ABB12/10KPKF80	4,80	4,40	3,00	5,53	37,50
		<b>0.189</b>	<b>0.173</b>	<b>0.118</b>		<b>1.476</b>
12/40 (25/40)	ABB12/40KPKF80	4,80	4,00	2,70	4,00	37,50
		<b>0.189</b>	<b>0.157</b>	<b>0.106</b>		<b>1.476</b>
8/40 (100/40)	ABB8/40KPKF80	7,80	5,20	2,90	4,00	40,70
		<b>0.307</b>	<b>0.205</b>	<b>0.114</b>		<b>1.602</b>
8/12	ABB8/12KPKF80	7,80	3,80	2,50	2,50	40,70
		<b>0.307</b>	<b>0.150</b>	<b>0.098</b>		<b>1.602</b>
8/10	ABB8/10KPKF80	7,80	5,20	3,30	5,53	40,70
		<b>0.307</b>	<b>0.205</b>	<b>0.130</b>		<b>1.602</b>
8	ABB8KPKF80	7,80	6,80	4,55	9,00	40,70
		<b>0.307</b>	<b>0.268</b>	<b>0.179</b>		<b>1.602</b>
(100/60)	ABB100/60KPKF80	7,80	5,50	3,40	6,00	40,70
		<b>0.307</b>	<b>0.217</b>	<b>0.134</b>		<b>1.602</b>
(100)	ABB100KPKF80	7,80	7,00	4,40	10,00	40,70
		<b>0.307</b>	<b>0.276</b>	<b>0.173</b>		<b>1.602</b>
4/10	ABB4/10KPKF80	11,00	5,20	3,30	553	41,25
		<b>0.433</b>	<b>0.205</b>	<b>0.130</b>		<b>1.624</b>
4	ABB4KPKF80	11,00	9,55	7,10	22,00	41,25
		<b>0.433</b>	<b>0.376</b>	<b>0.280</b>		<b>1.624</b>
(160)	ABB160KPKF80	11,00	9,45	5,70	16,00	41,25
		<b>0.433</b>	<b>0.372</b>	<b>0.224</b>		<b>1.624</b>
0	ABB0KPKF80	15,00	14,35	11,50	53,0	44,50
		<b>0.591</b>	<b>0.565</b>	<b>0.453</b>		<b>1.752</b>
(500/160)	ABB500/160KPKF80	15,00	9,45	5,70	16,00	44,50
		<b>0.591</b>	<b>0.372</b>	<b>0.224</b>		<b>1.752</b>
(500/250)	ABB500/250KPKF80	15,00	10,00	7,00	25,00	44,50
		<b>0.591</b>	<b>0.394</b>	<b>0.276</b>		<b>1.752</b>
(500/350)	ABB500/350KPKF80	15,00	11,90	8,00	35,00	44,50
		<b>0.591</b>	<b>0.468</b>	<b>0.315</b>		<b>1.752</b>
(500)	ABB500KPKF80	15,00	14,35	9,80	50,00	44,50
		<b>0.591</b>	<b>0.565</b>	<b>0.386</b>		<b>1.752</b>

For standard gold plating, add P3 to the end of the part number.

## X-ON Electronics

Largest Supplier of Electrical and Electronic Components

*Click to view similar products for [Circular MIL Spec Connector](#) category:*

*Click to view products by [TT Electronics](#) manufacturer:*

Other Similar products are found below :

[0025-262-542](#) [0025-264-3014](#) [58-570121-04S](#) [0134-202-1200](#) [0134-207-1206](#) [0134-207-1800](#) [0134-207-2207](#) [0134-213-0806](#) [0134-213-1007](#) [0134-213-1009](#) [0134-213-1208](#) [0134-213-1800](#) [0134-213-2209](#) [0025-258-000](#) [015-9516-002](#) [60-042722-19P](#) [0114-201-1278](#) [602GB06EG24-61SN](#) [0134-201-1207](#) [0134-201-1806](#) [0134-201-2006](#) [0134-201-2007](#) [0134-201-2010](#) [0134-202-1400](#) [0134-207-0809](#) [0134-207-1208](#) [0134-207-2009](#) [0134-213-1006](#) [6104-207-2302](#) [6104-208-1902](#) [6104-215-0902](#) [6131-202-19149P](#) [6131-204-21149P](#) [6131-207-13149P](#) [6131-208-13149P](#) [6131-209-17149P](#) [6131-210-11149P](#) [6131-211-19149P](#) [6131-216-19149P](#) [6131-220-25149P](#) [6131-259-11149P](#) [6131-259-21149P](#) [6131-259-23149P](#) [6131-263-19149P](#) [6131-265-17149P](#) [6131-265-19149P](#) [CS3102A-20-15P](#) [CS3102A-20-15S](#) [CS3106A-10SL-53S](#) [CS3106A-10SL-64S](#)