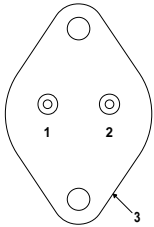
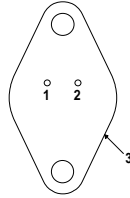


1 AMP POSITIVE VOLTAGE REGULATOR



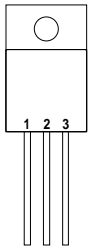
Pin 1 – V_{IN}
 Pin 2 – V_{OUT}
 Case – Ground

K Package – TO-3



Pin 1 – V_{IN}
 Pin 2 – V_{OUT}
 Case – Ground

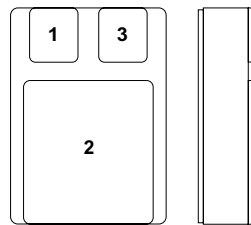
R Package – TO-66



Pin 1 – V_{IN}
 Pin 2 – Ground
 Pin 3 – V_{OUT}
 Case – Ground*

G Package – TO-257
IG Package – TO-257*

* isolated Case on IG package



Pin 1 – V_{IN}
 Pin 2 – Ground
 Pin 3 – V_{OUT}

SMD 1 PACKAGE
 Ceramic Surface Mount

FEATURES

- **OUTPUT CURRENT UP TO 1.0A**
- **OUTPUT VOLTAGES OF 5, 12, 15V**
- **0.01% / V LINE REGULATION**
- **0.3% / A LOAD REGULATION**
- **THERMAL OVERLOAD PROTECTION**
- **SHORT CIRCUIT PROTECTION**
- **OUTPUT TRANSISTOR SOA PROTECTION**
- **1% VOLTAGE TOLERANCE (–A VERSIONS)**

DESCRIPTION

The IP140A / LM140 / IP7800A / IP7800 series of 3 terminal regulators is available with several fixed output voltage making them useful in a wide range of applications.

The A suffix devices are fully specified at 1A, provide 0.01% / V line regulation, 0.3% / A load regulation and $\pm 1\%$ output voltage tolerance at room temperature.

Protection features include Safe Operating Area current limiting and thermal shutdown.

ABSOLUTE MAXIMUM RATINGS ($T_{case} = 25^{\circ}C$ unless otherwise stated)

V_I	DC Input Voltage (for $V_O = 5, 12, 15V$)	35V
P_D	Power Dissipation	Internally limited ¹
T_j	Operating Junction Temperature Range	–55 to 150°C
T_{stg}	Storage Temperature	–65 to 150°C

Note 1. Although power dissipation is internally limited, these specifications are applicable for maximum power dissipation P_{MAX} of 20W. $I_{MAX} = 1.0A$.

Parameter	Test Conditions	IP7805A IP140A-05			IP7805 IP140A-05			Units	
		Min.	Typ.	Max.	Min.	Typ.	Max.		
V_O Output Voltage	$I_O = 1A$ $V_{IN} = 10V$	4.95	5	5.05	4.8	5	5.2	V	
	$I_O = 5mA$ to I_{MAX} $P_D \leq P_{MAX}$ $V_{IN} = 7.5V$ to $20V$ $T_J = -55$ to $150^\circ C$	4.85		5.15	4.75		5.25		
V_O Low Supply	$I_O = 5mA$ to I_{MAX} $P_D \leq P_{MAX}$ $V_{IN} = 7V$ to $20V$	4.75		5.15	4.75		5.25	V	
ΔV_O Line Regulation	$I_O = 0.5 I_{MAX}$	$V_{IN} = 7V$ to $25V$		3		10		50	mV
		$V_{IN} = 7.5V$ to $25V$ $T_J = -55$ to $150^\circ C$		3		10		50	
	$I_O \leq I_{MAX}$ $V_{IN} = 7.3V$ to $20V$		3		10		50		
	$V_{IN} = 8V$ to $12V$ $T_J = -55$ to $150^\circ C$		1		4		20	25	
ΔV_O Load Regulation	$V_{IN} = 10V$	$I_O = 5mA$ to $1.5A$		10		25		50	mV
		$I_O = 250mA$ to $750mA$		4		15		25	
	$V_{IN} = 10V$ $I_O = 5mA$ to I_{MAX} $T_J = -55$ to $150^\circ C$		7		25		50		
I_Q Quiescent Current	$I_O \leq I_{MAX}$ $V_{IN} = 10V$ $T_J = -55$ to $150^\circ C$		4	6			6	mA	
			4	6.5			7		
ΔI_Q Quiescent Current Change	$I_O = 5mA$ to I_{MAX} $V_{IN} = 10V$		0.2	0.5			0.5	mA	
	$I_O \leq I_{MAX}$ $V_{IN} = 7.5V$ to $20V$ $T_J = -55$ to $150^\circ C$		0.1	0.8			0.8		
	$I_O \leq 0.5 I_{MAX}$ $V_{IN} = 8V$ to $25V$		0.1	0.8			0.8		
	$I_O \leq 0.5 I_{MAX}$ $V_{IN} = 7V$ to $25V$ $T_J = -55$ to $150^\circ C$		0.2	1			1.0		
V_N Output Noise Voltage	$f = 10Hz$ to $100kHz$ $V_{IN} = 10V$		40	200		40		μV	
$\frac{\Delta V_{IN}}{\Delta V_O}$ Ripple Rejection	$f = 120Hz$ $V_{IN} = 8V$ to $18V$ $T_J = -55$ to $150^\circ C$	$I_O \leq I_{MAX}$	68	80		68		dB	
		$I_O \leq 0.5 I_{MAX}$	68	80		68			
Dropout Voltage	$I_O = I_{MAX}$		2	2.5		2		V	
R_O Output Resistance	$f = 1 kHz$		5			5		$m\Omega$	
I_{sc} Short Circuit Current	$V_{IN} = 35V$		0.6	1.2		0.6	1.2	A	
I_{pk} Peak Output Current	$V_{IN} = 10V$		2.4	3.3		2.4	3.3		
Average Temperature Coefficient of V_O	$I_O = 5mA$		0.2	2		0.6		$\frac{mV}{^\circ C}$	
Input Voltage required to maintain line regulation	$I_O \leq I_{MAX}$		7.3			7.3		V	

- All characteristics are measured with a capacitor across the input of $0.22\mu F$ and a capacitor across the output of $0.1\mu F$. All characteristics except noise voltage and ripple rejection ratio are measured using pulse techniques ($t_p \leq 10ms$, $\delta \leq 5\%$). Output voltage changes due to changes in internal temperature must be taken into account separately.
- Although power dissipation is internally limited, these specifications are applicable for maximum power dissipation P_{MAX} of $20W$, $I_{MAX} = 1.0A$.
- $T_J = 25^\circ C$ unless otherwise stated.

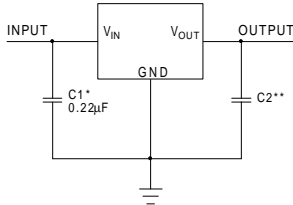
Parameter	Test Conditions	IP7812A IP140A-12			IP7812 IP140A-12			Units
		Min.	Typ.	Max.	Min.	Typ.	Max.	
V _O Output Voltage	I _O = 1A V _{IN} = 19V	11.88	12	12.12	11.5	12	12.5	V
	I _O = 5mA to I _{MAX} P _D ≤ P _{MAX} V _{IN} = 14.8V to 27V T _J = -55 to 150°C			12.36			12.6	
V _O Low Supply	I _O = 5mA to I _{MAX} P _D ≤ P _{MAX} V _{IN} = 14.5V to 27V	11.40		12.36	11.4		12.6	V
ΔV _O Line Regulation	I _O = 0.5 I _{MAX}	V _{IN} = 14.5V to 30V		4	18		120	mV
		V _{IN} = 14.8V to 30V T _J = -55 to 150°C		4	18		120	
	I _O ≤ I _{MAX} V _{IN} = 14.5V to 27V		4	18		120		
	V _{IN} = 16V to 22V		2	9		50		
					4	30	60	
ΔV _O Load Regulation	V _{IN} = 19V	I _O = 5mA to 1.5A		12	32		120	mV
		I _O = 250mA to 750mA		4	19		60	
	V _{IN} = 19V	I _O = 5mA to I _{MAX} T _J = -55 to 150°C		8	60		120	
I _Q Quiescent Current	I _O ≤ I _{MAX} V _{IN} = 19V	T _J = -55 to 150°C		4	6		6	mA
				4	6.5		7	
ΔI _Q Quiescent Current Change	I _O = 5mA to I _{MAX} V _{IN} = 19V			0.2	0.5		0.5	mA
		I _O ≤ I _{MAX} V _{IN} = 14.8V to 27V T _J = -55 to 150°C		0.1	0.8		0.8	
	I _O ≤ 0.5 I _{MAX} V _{IN} = 15V to 30V		0.1	0.8		0.8		
	I _O ≤ 0.5 I _{MAX} V _{IN} = 14.5V to 30V T _J = -55 to 150°C		0.2	1		1		
V _N Output Noise Voltage	f = 10Hz to 100kHz V _{IN} = 19V		75	480		75		μV
ΔV _{IN} / ΔV _O Ripple Rejection	f = 120Hz V _{IN} = 15V to 25V	I _O ≤ I _{MAX}	61	72		61		dB
		I _O ≤ 0.5 I _{MAX} T _J = -55 to 150°C	61	72		61		
Dropout Voltage	I _O = I _{MAX}		2	2.5		2		V
R _O Output Resistance	f = 1 kHz		8			8		mΩ
I _{sc} Short Circuit Current	V _{IN} = 35V		0.6	1.2		0.6	1.2	A
I _{pk} Peak Output Current	V _{IN} = 19V		2.4	3.3		2.4	3.3	
Average Temperature Coefficient of V _O	I _O = 5mA		0.5	4.8		1.5		mV/°C
Input Voltage required to maintain line regulation	I _O ≤ I _{MAX}	14.5				14.6		V

- All characteristics are measured with a capacitor across the input of 0.22μF and a capacitor across the output of 0.1μF. All characteristics except noise voltage and ripple rejection ratio are measured using pulse techniques (t_p ≤ 10ms, δ ≤ 5%). Output voltage changes due to changes in internal temperature must be taken into account separately.
- Although power dissipation is internally limited, these specifications are applicable for maximum power dissipation P_{MAX} of 20W, I_{MAX} = 1.0A.
- T_J = 25°C unless otherwise stated.

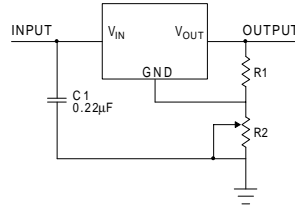
Parameter	Test Conditions	IP7815A IP140A-15			IP7815 IP140A-15			Units
		Min.	Typ.	Max.	Min.	Typ.	Max.	
V _O Output Voltage	I _O = 1A V _{IN} = 23V	14.85	15	15.15	14.4	15	15.60	V
	I _O = 5mA to I _{MAX} P _D ≤ P _{MAX} V _{IN} = 17.9V to 30V T _J = -55 to 150°C	14.55		15.45	14.25		15.75	
V _O Low Supply	I _O = 5mA to I _{MAX} P _D ≤ P _{MAX} V _{IN} = 17.5V to 30V	14.25		15.45	14.25		15.75	V
ΔV _O Line Regulation	I _O = 0.5 I _{MAX}	V _{IN} = 17.5V to 30V	4	22			150	mV
		V _{IN} = 17.9V to 30V T _J = -55 to 150°C	4	22			150	
	I _O ≤ I _{MAX} V _{IN} = 17.5V to 30V	4	22			150		
	V _{IN} = 20V to 26V T _J = -55 to 150°C	2	10			60		
ΔV _O Load Regulation	V _{IN} = 23V	I _O = 5mA to 1.5A	12	35			150	mV
		I _O = 250mA to 750mA	4	21			75	
	V _{IN} = 23V	I _O = 5mA to I _{MAX} T _J = -55 to 150°C	9	75			150	
I _Q Quiescent Current	I _O ≤ I _{MAX} V _{IN} = 23V	T _J = -55 to 150°C	4	6			6	mA
			4	6.5			7	
ΔI _Q Quiescent Current Change	I _O = 5mA to I _{MAX} V _{IN} = 23V		0.2	0.5			0.5	mA
		I _O ≤ I _{MAX} V _{IN} = 17.9V to 30V T _J = -55 to 150°C	0.1	0.8			0.8	
	I _O ≤ 0.5 I _{MAX} V _{IN} = 18.5V to 30V	0.1	0.8			0.8		
	I _O ≤ 0.5 I _{MAX} V _{IN} = 17.5V to 30V T _J = -55 to 150°C	0.2	1			1		
V _N Output Noise Voltage	f = 10Hz to 100kHz V _{IN} = 23V	90	600		90		μV	
ΔV _{IN} / ΔV _O Ripple Rejection	f = 120Hz V _{IN} = 18.5V to 28.5V	I _O ≤ I _{MAX}	60	70		60		dB
		I _O ≤ 0.5 I _{MAX} T _J = -55 to 150°C	60	70		60		
Dropout Voltage	I _O = I _{MAX}	2	2.5		2		V	
R _O Output Resistance	f = 1 kHz	9			9		mΩ	
I _{sc} Short Circuit Current	V _{IN} = 35V	0.6	1.2		0.6	1.2	A	
I _{pk} Peak Output Current	V _{IN} = 23V	2.4	3.3		2.4	3.3	A	
Average Temperature Coefficient of V _O	I _O = 5mA	0.6	6		1.8		mV/°C	
Input Voltage required to maintain line regulation	I _O ≤ I _{MAX}	17.5			17.7		V	

- All characteristics are measured with a capacitor across the input of 0.22μF and a capacitor across the output of 0.1μF. All characteristics except noise voltage and ripple rejection ratio are measured using pulse techniques (t_p ≤ 10ms, δ ≤ 5%). Output voltage changes due to changes in internal temperature must be taken into account separately.
- Although power dissipation is internally limited, these specifications are applicable for maximum power dissipation P_{MAX} of 20W, I_{MAX} = 1.0A.
- T_J = 25°C unless otherwise stated.

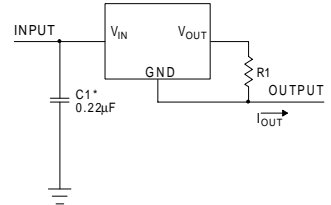
APPLICATIONS INFORMATION



Fixed Output Regulator



Adjustable Output Regulator



Current Regulator

- * Required if the regulator is located far from the power supply.
- ** Although no output capacitor is needed for stability, it does help transient response. (If needed, use 0.1µF ceramic disc)

$$V_{OUT} = 5V + \left(\frac{5V}{R1 + V} \right) R2$$

$$\left(\frac{5V}{R1} \right) > 3I_Q, \text{ Load Regulation } \approx$$

$$\left[\frac{R1+R2}{R1} \right] (L_R \text{ of Regulator})$$

$$I_{OUT} = \left(\frac{V2 - V3}{R1} \right) + I_Q$$

$$\Delta I_Q = 1.3\text{mA over line and load changes}$$

Order Information

Part Number	K-Pack (TO-3)	R-Pack (TO-66)	G/IG-Pack (TO-257)	SMD 1	Temp. Range	Note: To order, add the package identifier to the part number. eg. IP7805AK IP140SG-12
IP7800A	✓	✓	✓	✓	-55 to +150°C	
IP7800	✓	✓	✓	✓	"	
IP140A	✓	✓	✓	✓	"	
IP140	✓	✓	✓	✓	"	
LM140	✓	✓	✓	✓	"	

Part number search for devices beginning "IP7805A"



Part number search for devices beginning "IP7805A"

[Semelab Home](#)

Datasheets are downloaded as Acrobat PDF files.










Print this Page



Linear Devices


PRODUCT	Screening options available	Package	Description	Temperature Range	Polarity	Current (A)	Input Voltage SIDE 1 (V)	Output Voltage SIDE 1 (V)	Voltage drop SIDE 1 (typ.)	Voltage drop SIDE 1 (max.)	Input Voltage SIDE 2 (V)	Output Voltage SIDE 2 (V)	Voltage drop SIDE 2 (typ.)	Voltage drop SIDE 2 (max.)
IP7805AB	?	SMM3	Voltage Regulator	0 to +70°C	Positive	1.5A	7.5V to 25V	5V	2V	2.5V	-	-	-	-
IP7805AB-8QR-B	i	SMM3	Voltage Regulator	0 to +70°C	Positive	1.5A	7.5V to 25V	5V	2V	2.5V	-	-	-	-
IP7805AB-DESC	i	SMM3	Voltage Regulator	0 to +70°C	Positive	1.5A	7.5V to 25V	5V	2V	2.5V	-	-	-	-
IP7805AG	?	TO257AA	Voltage Regulator	-55 to +150°C	Positive	1.5A	7.5V to 25V	5V	2V	2.5V	-	-	-	-
IP7805AG-883B	i	TO257AA	Voltage Regulator	-55 to +150°C	Positive	1.5A	7.5V to 25V	5V	2V	2.5V	-	-	-	-
IP7805AG-8QR-B	i	TO257AA	Voltage Regulator	-55 to +150°C	Positive	1.5A	7.5V to 25V	5V	2V	2.5V	-	-	-	-
IP7805AG-BS	i	TO257AA	Voltage Regulator	-55 to +150°C	Positive	1.5A	7.5V to 25V	5V	2V	2.5V	-	-	-	-
IP7805AG-BSS2	i	TO257AA	Voltage Regulator	-55 to +150°C	Positive	1.5A	7.5V to 25V	5V	2V	2.5V	-	-	-	-
IP7805AG-DESC	i	TO257AA	Voltage Regulator	-55 to +150°C	Positive	1.5A	7.5V to 25V	5V	2V	2.5V	-	-	-	-
IP7805AGF	?	TO257-F	Voltage Regulator	-55 to +150°C	Positive	1.5A	7.5V to 25V	5V	2V	2.5V	-	-	-	-
IP7805AGF-8QR-B	i	TO257-F	Voltage Regulator	-55 to +150°C	Positive	1.5A	7.5V to 25V	5V	2V	2.5V	-	-	-	-
IP7805AIG	?	TO257AA	Voltage Regulator - Isolated	-55 to +150°C	Positive	1.5A	7.5V to 25V	5V	2V	2.5V	-	-	-	-
IP7805AIG-883B	i	TO257AA	Voltage Regulator - Isolated	-55 to +150°C	Positive	1.5A	7.5V to 25V	5V	2V	2.5V	-	-	-	-
IP7805AIG-8QR-B	i	TO257AA	Voltage Regulator - Isolated	-55 to +150°C	Positive	1.5A	7.5V to 25V	5V	2V	2.5V	-	-	-	-
IP7805AIG-DESC	i	TO257AA	Voltage Regulator - Isolated	-55 to +150°C	Positive	1.5A	7.5V to 25V	5V	2V	2.5V	-	-	-	-
IP7805AIGF	?	TO257-F	Voltage Regulator - Isolated	-55 to +150°C	Positive	1.5A	7.5V to 25V	5V	2V	2.5V	-	-	-	-
IP7805AIGF-8QR-B	i	TO257-F	Voltage Regulator - Isolated	-55 to +150°C	Positive	1.5A	7.5V to 25V	5V	2V	2.5V	-	-	-	-
IP7805AK	?	TO3 (TO204AA)	Voltage Regulator	-55 to +150°C	Positive	1.5A	7.5V to 25V	5V	2V	2.5V	-	-	-	-
IP7805AK-883B	i	TO3 (TO204AA)	Voltage Regulator	-55 to +150°C	Positive	1.5A	7.5V to 25V	5V	2V	2.5V	-	-	-	-
IP7805AK-8QR-B	i	TO3 (TO204AA)	Voltage Regulator	-55 to +150°C	Positive	1.5A	7.5V to 25V	5V	2V	2.5V	-	-	-	-
IP7805AK-BSS2	i	TO3 (TO204AA)	Voltage Regulator	-55 to +150°C	Positive	1.5A	7.5V to 25V	5V	2V	2.5V	-	-	-	-
IP7805AK-DESC	i	TO3 (TO204AA)	Voltage Regulator	-55 to +150°C	Positive	1.5A	7.5V to 25V	5V	2V	2.5V	-	-	-	-
IP7805AR	?	TO66 (TO213AA)	Voltage Regulator	-55 to +150°C	Positive	1.5A	7.5V to 25V	5V	2V	2.5V	-	-	-	-
IP7805AR-883B	i	TO66 (TO213AA)	Voltage Regulator	-55 to +150°C	Positive	1.5A	7.5V to 25V	5V	2V	2.5V	-	-	-	-


Part number search for devices beginning "IP7805A"

IP7805AR-8QR-B		TO66 (TO213AA)	Voltage Regulator	-55 to +150°C Positive	1.5A	7.5V to 25V	5V	2V	2.5V	-	-	-	-
IP7805AR-BSS2		TO66 (TO213AA)	Voltage Regulator	-55 to +150°C Positive	1.5A	7.5V to 25V	5V	2V	2.5V	-	-	-	-
IP7805AR-DESC		TO66 (TO213AA)	Voltage Regulator	-55 to +150°C Positive	1.5A	7.5V to 25V	5V	2V	2.5V	-	-	-	-
IP7805ASMD		SMD1 (TO276AB)	Voltage Regulator	-55 to +150°C Positive	1.5A	7.5V to 25V	5V	2V	2.5V	-	-	-	-
IP7805ASMD-8QR-B		SMD1 (TO276AB)	Voltage Regulator	-55 to +150°C Positive	1.5A	7.5V to 25V	5V	2V	2.5V	-	-	-	-
IP7805ASMD05		SMD0.5 (TO276AA)	Voltage Regulator	-55 to +150°C Positive	1.5A	7.5V to 25V	5V	2V	2.5V	-	-	-	-
IP7805ASMD05-8QR-B		SMD0.5 (TO276AA)	Voltage Regulator	-55 to +150°C Positive	1.5A	7.5V to 25V	5V	2V	2.5V	-	-	-	-

SCREENING OPTIONS AVAILABILITY

(including CECC, JAN/JANTX/JANTXV, BS)

 symbol indicates that screening options are available for this device.

For device-specific screening options and order information, click the relevant  symbol.
For more information on Screening options, [visit the Screening Homepage.](#)

[Top of Page](#)

If you are unable to find a suitable part, please [contact us](#).



Part number search for devices beginning "IP7815A"



Part number search for devices beginning "IP7815A"

[Semelab Home](#)

Datasheets are downloaded as Acrobat PDF files.




Print this Page



Linear Devices


PRODUCT	Screening options available	Package	Description	Temperature Range	Polarity	Current (A)	Input Voltage SIDE 1 (V)	Output Voltage SIDE 1 (V)	Voltage drop SIDE 1 (typ.)	Voltage drop SIDE 1 (max.)	Input Voltage SIDE 2 (V)	Output Voltage SIDE 2 (V)	Voltage drop SIDE 2 (typ.)	Voltage drop SIDE 2 (max.)
IP7815AG	?	TO257AA	Voltage Regulator	-55 to +150°C	Positive	1.5A	17.5V to 30V	15V	2V	2.5V	-	-	-	-
IP7815AG-883B	i	TO257AA	Voltage Regulator	-55 to +150°C	Positive	1.5A	17.5V to 30V	15V	2V	2.5V	-	-	-	-
IP7815AG-8QR-B	i	TO257AA	Voltage Regulator	-55 to +150°C	Positive	1.5A	17.5V to 30V	15V	2V	2.5V	-	-	-	-
IP7815AG-BSS2	i	TO257AA	Voltage Regulator	-55 to +150°C	Positive	1.5A	17.5V to 30V	15V	2V	2.5V	-	-	-	-
IP7815AG-DESC	i	TO257AA	Voltage Regulator	-55 to +150°C	Positive	1.5A	17.5V to 30V	15V	2V	2.5V	-	-	-	-
IP7815AGF	?	TO257-F	Voltage Regulator	-55 to +150°C	Positive	1.5A	17.5V to 30V	15V	2V	2.5V	-	-	-	-
IP7815AGF-8QR-B	i	TO257-F	Voltage Regulator	-55 to +150°C	Positive	1.5A	17.5V to 30V	15V	2V	2.5V	-	-	-	-
IP7815AIG	?	TO257AA	Voltage Regulator Isolated	-55 to +150°C	Positive	1.5A	17.5V to 30V	15V	2V	2.5V	-	-	-	-
IP7815AIG-883B	i	TO257AA	Voltage Regulator Isolated	-55 to +150°C	Positive	1.5A	17.5V to 30V	15V	2V	2.5V	-	-	-	-
IP7815AIG-8QR-B	i	TO257AA	Voltage Regulator Isolated	-55 to +150°C	Positive	1.5A	17.5V to 30V	15V	2V	2.5V	-	-	-	-
IP7815AIG-DESC	i	TO257AA	Voltage Regulator Isolated	-55 to +150°C	Positive	1.5A	17.5V to 30V	15V	2V	2.5V	-	-	-	-
IP7815AIGF	?	TO257-F	Voltage Regulator Isolated	-55 to +150°C	Positive	1.5A	17.5V to 30V	15V	2V	2.5V	-	-	-	-
IP7815AIGF-8QR-B	i	TO257-F	Voltage Regulator Isolated	-55 to +150°C	Positive	1.5A	17.5V to 30V	15V	2V	2.5V	-	-	-	-
IP7815AK	?	TO3 (TO204AA)	Voltage Regulator	-55 to +150°C	Positive	1.5A	17.5V to 30V	15V	2V	2.5V	-	-	-	-
IP7815AK-883B	i	TO3 (TO204AA)	Voltage Regulator	-55 to +150°C	Positive	1.5A	17.5V to 30V	15V	2V	2.5V	-	-	-	-
IP7815AK-8QR-B	i	TO3 (TO204AA)	Voltage Regulator	-55 to +150°C	Positive	1.5A	17.5V to 30V	15V	2V	2.5V	-	-	-	-
IP7815AK-DESC	i	TO3 (TO204AA)	Voltage Regulator	-55 to +150°C	Positive	1.5A	17.5V to 30V	15V	2V	2.5V	-	-	-	-
IP7815AR	?	TO66 (TO213AA)	Voltage Regulator	-55 to +150°C	Positive	1.5A	17.5V to 30V	15V	2V	2.5V	-	-	-	-
IP7815AR-883B	i	TO66 (TO213AA)	Voltage Regulator	-55 to +150°C	Positive	1.5A	17.5V to 30V	15V	2V	2.5V	-	-	-	-
IP7815AR-8QR-B	i	TO66 (TO213AA)	Voltage Regulator	-55 to +150°C	Positive	1.5A	17.5V to 30V	15V	2V	2.5V	-	-	-	-
IP7815AR-DESC	i	TO66 (TO213AA)	Voltage Regulator	-55 to +150°C	Positive	1.5A	17.5V to 30V	15V	2V	2.5V	-	-	-	-
IP7815ASMD	?	SMD1 (TO276AB)	Voltage Regulator	-55 to +150°C	Positive	1.5A	17.5V to 30V	15V	2V	2.5V	-	-	-	-
IP7815ASMD-8QR-B	i	SMD1 (TO276AB)	Voltage Regulator	-55 to +150°C	Positive	1.5A	17.5V to 30V	15V	2V	2.5V	-	-	-	-
IP7815ASMD05	?	SMD0.5 (TO276AA)	Voltage Regulator	-55 to +150°C	Positive	1.5A	17.5V to 30V	15V	2V	2.5V	-	-	-	-


Part number search for devices beginning "IP7815A"

IP7815ASMD05-8QR-B		SMD0.5 (TO276AA)	Voltage Regulator	-55 to +150°C Positive	1.5A	17.5V to 30V	15V	2V	2.5V	-	-	-	-
--------------------	---	---------------------	----------------------	------------------------	------	-----------------	-----	----	------	---	---	---	---

SCREENING OPTIONS AVAILABILITY

(including CECC, JAN/JANTX/JANTXV, BS)

 symbol indicates that screening options are available for this device.

For device-specific screening options and order information, click the relevant  symbol.
For more information on Screening options, [visit the Screening Homepage.](#)

[Top of Page](#)

If you are unable to find a suitable part, please [contact us](#).



X-ON Electronics

Largest Supplier of Electrical and Electronic Components

Click to view similar products for [Linear Voltage Regulators](#) category:

Click to view products by [TT Electronics](#) manufacturer:

Other Similar products are found below :

[LV56831P-E](#) [LV5684PVD-XH](#) [MCDTSA6-2R](#) [L7815ACV-DG](#) [LV56801P-E](#) [TCR3DF13,LM\(CT](#) [TCR3DF39,LM\(CT](#) [TLE42794G](#)
[L78L05CZ/1SX](#) [L78LR05DL-MA-E](#) [LM317T](#) [636416C](#) [714954EB](#) [LV5680P-E](#) [L78M15CV-DG](#) [L79M05T-E](#) [TLS202A1MBVHTSA1](#)
[L78LR05D-MA-E](#) [NCV317MBTG](#) [NTE7227](#) [NCV78M09BDTRKG](#) [LV5680NPVC-XH](#) [LT1054CN8](#) [ME6208A50M3G](#) [SL7533-8](#)
[ME6231A50M3G](#) [ME6231A50PG](#) [ME6231C50M5G](#) [AMS1117S-3.3](#) [AMS1117-5.0](#) [AMS1117S-5.0](#) [AMS1117-3.3](#) [MD5118](#) [MD5121](#)
[MD5127](#) [MD5128](#) [MD5130](#) [MD5144](#) [MD5150](#) [MD5115](#) [MD5125](#) [MD5133](#) [MD5136](#) [MD5140](#) [MD5110](#) [MD52E18WB6](#) [MD52E33WB6](#)
[MD52E15QA3](#) [MD52E21QA3](#) [MD52E25QA3](#)