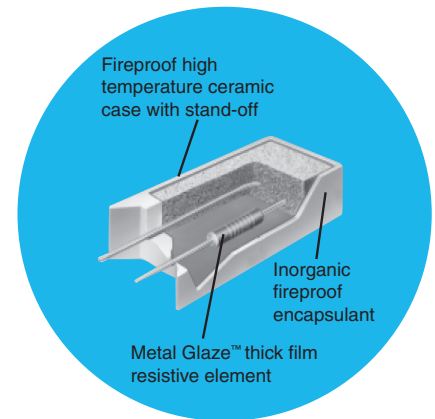


General Purpose Power Metal Glaze™ Resistor

PWRG Series

- 3 and 5 watts
- 1Ω to 1MΩ range
- TC's from +100 ppm/°C
- Radial leads for PC mount



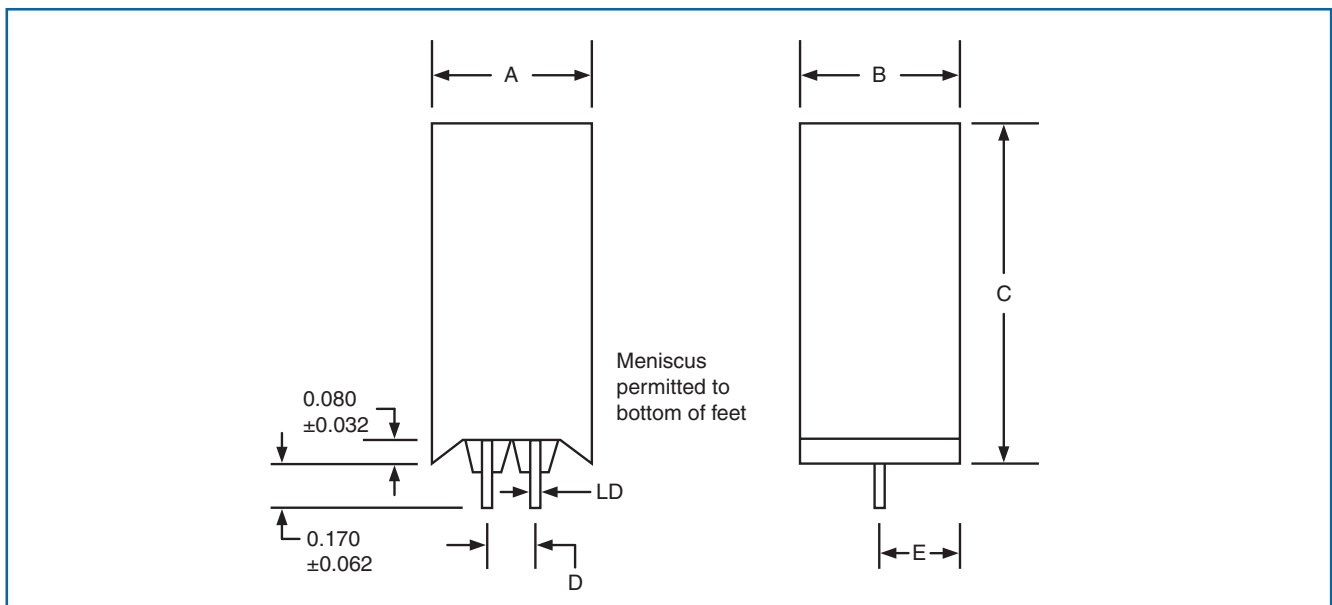
All Pb-free parts comply with EU Directive 2011/65/EU amended by (EU) 2015/863 (RoHS3)

Specifications

- Power Rating: 3 and 5 watts
- Resistance Range: 1Ω to 1MΩ

- Tolerance: ±1%, ±2%, ±5%, and ±10%,
- Flameproof inorganic construction

Physical Data



Dimensions (Inches and (mm))

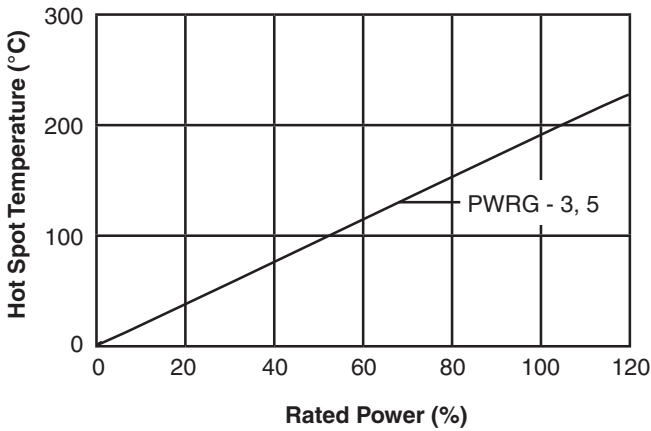
IRC Type	A	B	C	D	E	LD
PWRG-3	0.475 ±0.030 (12.0 ±0.8)	0.320 ±0.030 (8.1 ±0.8)	1.00 ±0.030 (25.4 ±0.8)	0.200 ±0.062 (5.08 ±1.6)	0.175 ±0.062 (4.44 ±1.6)	0.032 ±0.002 (1.02 ±0.05)
PWRG-5	0.500 ±0.030 (12.7 ±0.8)	0.350 ±0.030 (8.8 ±0.8)	1.00 ±0.030 (25.4 ±0.8)	0.200 ±0.062 (5.08 ±1.6)	0.175 ±0.062 (4.44 ±1.6)	0.032 ±0.002 (1.02 ±0.05)

General Note

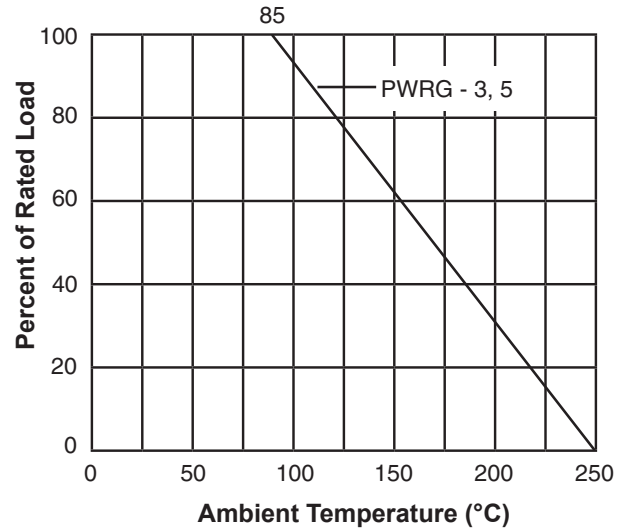
TT Electronics reserves the right to make changes in product specification without notice or liability. All information is subject to TT Electronics' own data and is considered accurate at time of going to print.

PWRG Series

Temperature Rise Chart



Power Derating Curve



Ordering Data



General Note

TT Electronics reserves the right to make changes in product specification without notice or liability.
All information is subject to TT Electronics' own data and is considered accurate at time of going to print.

X-ON Electronics

Largest Supplier of Electrical and Electronic Components

Click to view similar products for [Metal Film Resistors - Through Hole](#) category:

Click to view products by [TT Electronics](#) manufacturer:

Other Similar products are found below :

[MF2S-6K8JI](#) [GP55S-1002-FTW](#) [GP55S-1004-FTW](#) [GP55S-4753-FTW](#) [QW210](#) [RCFH-0.5-5TA](#) [RCFH-100-5TA](#) [RCFH-10-5TA](#) [RCFH-110-5TA](#) [RCFH-11K-5TA](#) [RCFH-11M-5TA](#) [RCFH-12K-5TA](#) [RCFH-130K-5TA](#) [RCFH-13-5TA](#) [RCFH-13K-5TA](#) [RCFH-13M-5TA](#) [RCFH-150K-5TA](#) [RCFH-15-5TA](#) [RCFH-160-5TA](#) [RCFH-160K-5TA](#) [RCFH-16-5TA](#) [RCFH-180K-5TA](#) [RCFH-18K-5TA](#) [RCFH-1M-5TA](#) [RCFH-200-5TA](#) [RCFH-200K-5TA](#) [RCFH-20K-5TA](#) [RCFH-220-5TA](#) [RCFH-220K-5TA](#) [RCFH-22K-5TA](#) [RCFH-2.2M-5TA](#) [RCFH-240K-5TA](#) [RCFH-24K-5TA](#) [RCFH-2-5TA](#) [RCFH-27-5TA](#) [RCFH-27K-5TA](#) [RCFH-2M-5TA](#) [RCFH-330-5TA](#) [RCFH-33-5TA](#) [RCFH-3.3M-5TA](#) [RCFH-360-5TA](#) [RCFH-360K-5TA](#) [RCFH-3.6M-5TA](#) [RCFH-39-5TA](#) [RCFH-39K-5TA](#) [RCFH-3.9M-5TA](#) [RCFH-430-5TA](#) [RCFH-47K-5TA](#) [RCFH-510K-5TA](#) [RCFH-51-5TA](#)