

INTERCHANGEABLE WALL PLUG POWER SUPPLY 12VDC 60WATT



SW4169-C

Features:

- Interchangeable AC Heads
- 1 Year Warranty
- Level VI Efficiency
- Worldwide Approvals



Description:

The Stontronics range of 60 Watt Interchangeable wall plug power supplies provide 60 watts of continuous power with the flexibility of worldwide usage as they are supplied with UK, Euro, USA & Auz AC Heads , all Efficiency Level VI and carry worldwide safety approvals.

Specification	
Part Code	SW4169-C
Input Voltage Range	90-264 Vac
Input Frequency Range	47-63Hz
Input Current Rated	1500 mA Max
Input AC Heads	UK, Euro, USA & Auz
Output Voltage Rating	+12V±5%
Output Current Range	5A
Output Min Current	0.0A
Output Connection Type	2.1x5.5x12mm centre positive – Straight
Line and Load Regulation	+/- 5%
Ripple & Noise	120mVp-p
Efficiency	88.0 %Min DOE Level VI CoC Tier 2
Over Voltage Protection	Over voltage protection point will be less than output voltage 120%.
Over Load Protection	Over voltage protection point will be less than output voltage 120%.
Operating Temperature	0 to 40°C
Storage Temperature	-20 to +70°C
Operating Humidity	20 to 80%
Storage Humidity	95%
Hi-Pot	3000VAC 50Hz 1Min
Leakage Current	0.25mA max
Safety Standard	CB TUV GS cTUVus CE FCC VCCI RCM
EMI Standard	CE, FCC, RCM
MTBF	40K Hours
Size mm max.	109 (L) 47 (W) 32(H)
Weight	259g

General Note

TT Electronics reserves the right to make changes in product specification without notice or liability. All information is subject to TT Electronics' own data and is considered accurate at time of going to print.

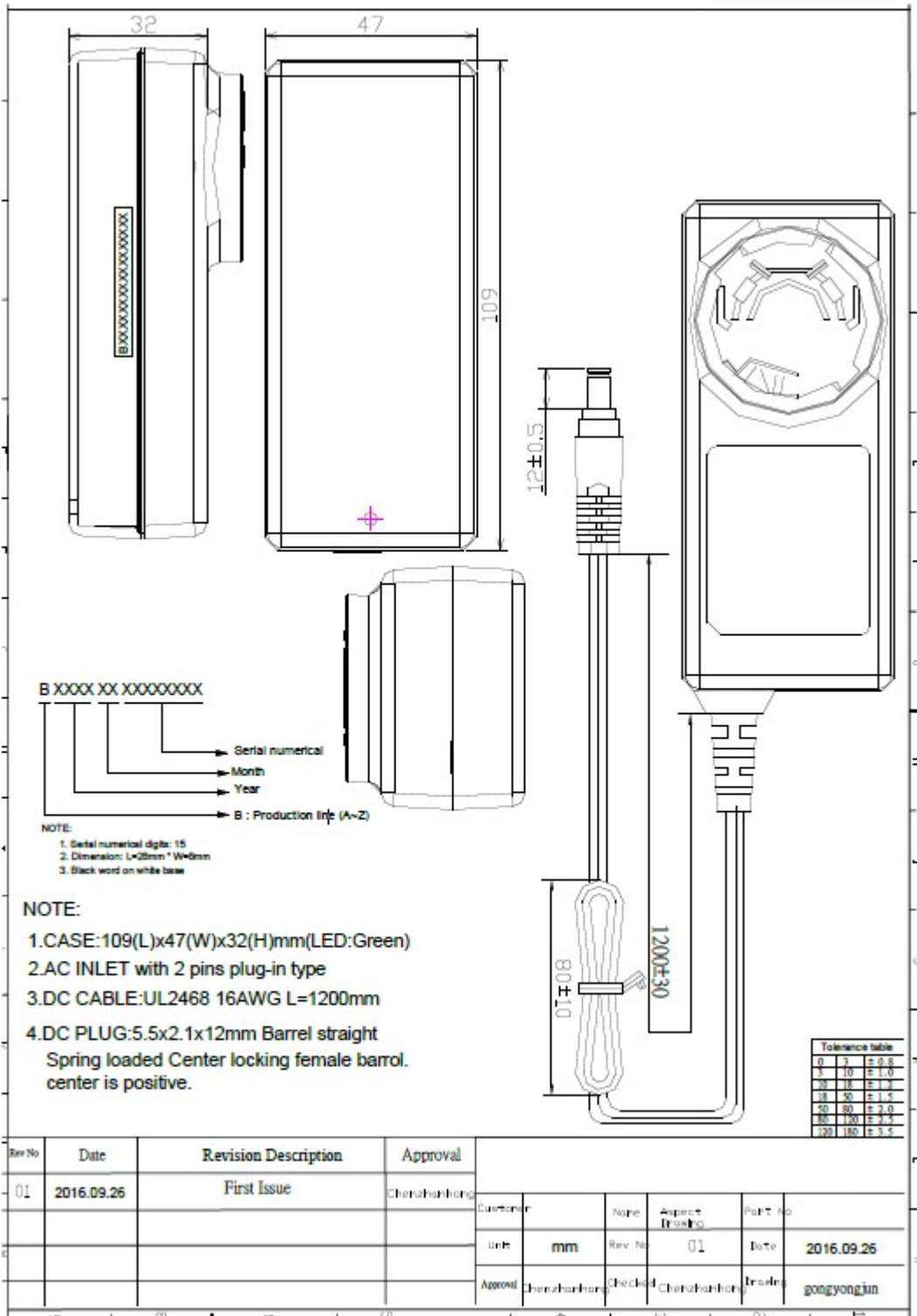
TT Electronics | Stontronics Ltd
Chancerygate Business Centre, Cradock Road, Reading RG2 0AH, UK
t: +44 (0) 118 931 1199

INTERCHANGEABLE WALL PLUG POWER SUPPLY 12VDC 60WATT



SW4169-C

Diagrams



X-ON Electronics

Largest Supplier of Electrical and Electronic Components

Click to view similar products for [Wall Mount AC Adapters](#) category:

Click to view products by [TT Electronics](#) manufacturer:

Other Similar products are found below :

[ADP-163 E](#) [ADP-167 J](#) [ADP-168 K](#) [ADP-159 A](#) [ADP-165 G](#) [PSAC05A-050L6](#) [RLMDT361800](#) [DA10-050CH](#) [DA5-050US-B](#)
[RLMDT701800](#) [WSU120-2000-R13](#) [WSU180-1330-13](#) [AC-DC ADAPTER 160W](#) [WSU120-2000-13](#) [WSU150-0800-13](#) [WSU075-3200-13](#)
[WSU060-2000-R13](#) [WSU090-2500-13](#) [WSU050-2000-R13](#) [WSU240-1000-13](#) [WSU240-0500-R13](#) [WSU075-1500-13](#) [WSU050-3000-13](#)
[WSU120-1500-13](#) [WSU120-1500-R13](#) [WSU045-1500-13](#) [WSU240-0750-13](#) [WSU090-2500-R13](#) [WSU240-1500-13](#) [WSU180-0660-13](#)
[WSU075-1500-R13](#) [WSU090-1300-13](#) [WSU180-1330-R13](#) [BB-SMI1812VP230C1](#) [WSU050-1500-13](#) [WSU090-0800-13](#) [WSU120-0700-13](#)
[WSU045-3000-13](#) [WSU180-0450-13](#) [WSU150-0560-R13](#) [WSU135-0880-13](#) [WSU120-3000-13](#) [WSU120-1000-R13](#) [WSU090-1300-R13](#)
[WSU060-1250-R13](#) [WSU060-1250-13](#) [WSU045-2000-R13](#) [WSU045-1500-R13](#) [PSAC05A-050L6M](#) [392007-01](#)