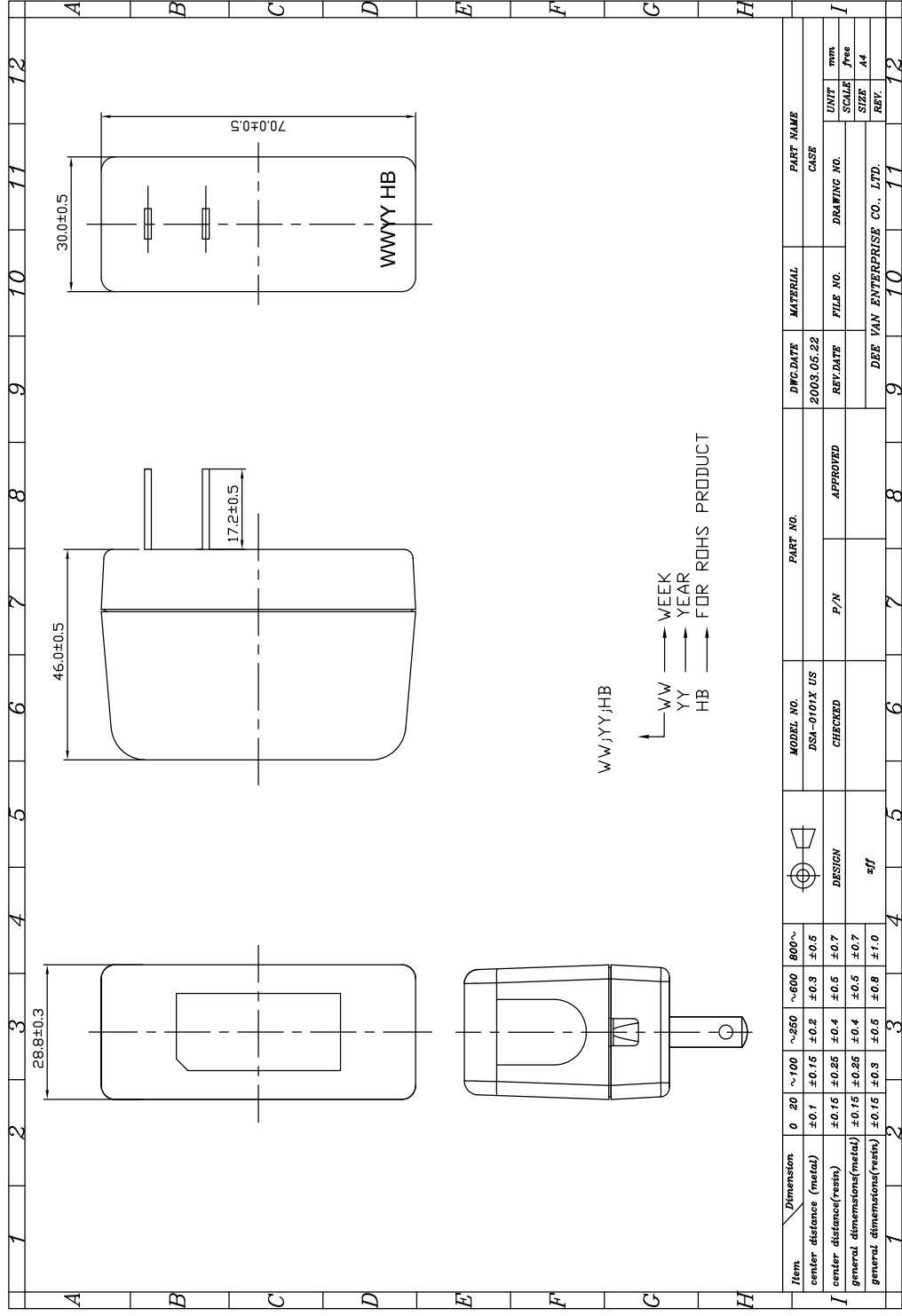


### Features:

- USA Fixed AC Head
- 1 Year Warranty
- Level VI Efficiency
- Universal Input
- UL Approved
- Small and Compact Design



SPECIFICATION			
Part Number	T6639ST	T6640ST	T6642ST
AC Input Voltage	90-264VAC		
AC Input Frequency	47-63Hz		
AC Input Current	0.5A Max		
AC Inrush Current	No Damage		
Output Voltage	+12V	+12V	+5V
Min Load Current	0A		
Nominal Load Current	1A	2A	2.5A
Nominal Output Power	12W	24W	12.5W
Output Regulation	+-5%		
Line Regulation	+-2%		
Ripple & Noise	300mV p-p		
Average Efficiency	82%		
Rise Time	100mS		
Turn On Delay	3s		
Size	70 x 30 x 29 mm		
Weight	120g		
Input Plug Type	USA Fixed		
Output Cord	18AWG 1500 Jackplug 5.5 x 2.1 x 12mm		
Operating Temperature	0 - 40 Deg C		
Storage Temperature	-20 to 60 Deg C		
Operating Humidity	20 - 85%		
Storage Humidity	5 - 95%		
Hi Pot	3000VAC 10mA 1 Min		
Leakage Current	0.25mA Max		
Safety	UL		
EMI	EN55022		
MTBF	50K Hours		



## X-ON Electronics

Largest Supplier of Electrical and Electronic Components

*Click to view similar products for [Wall Mount AC Adapters](#) category:*

*Click to view products by [TT Electronics](#) manufacturer:*

Other Similar products are found below :

[ADP-163 E](#) [ADP-167 J](#) [ADP-168 K](#) [ADP-159 A](#) [ADP-165 G](#) [PSAC05A-050L6](#) [RLMDT361800](#) [P25A14E-R1C](#) [DA10-050CH](#) [DA5-050US-B](#) [DA10-050UK](#) [RLMDT701800](#) [WSU120-2000-R13](#) [WSU180-1330-13](#) [AC-DC ADAPTER 160W](#) [WSU120-2000-13](#) [WSU150-0800-13](#) [WSU075-3200-13](#) [WSU060-2000-R13](#) [WSU090-2500-13](#) [WSU050-2000-R13](#) [WSU240-1000-13](#) [WSU240-0500-R13](#) [WSU075-1500-13](#) [WSU050-3000-13](#) [WSU120-1500-13](#) [WSU120-1500-R13](#) [WSU045-1500-13](#) [WSU240-0750-13](#) [WSU090-2500-R13](#) [WSU240-1500-13](#) [WSU180-0660-13](#) [WSU075-1500-R13](#) [WSU090-1300-13](#) [WSU180-1330-R13](#) [BB-SMI1812VP230C1](#) [WSU050-1500-13](#) [WSU090-0800-13](#) [WSU120-0700-13](#) [WSU045-3000-13](#) [WSU180-0450-13](#) [WSU150-0560-R13](#) [WSU135-0880-13](#) [WSU120-3000-13](#) [WSU120-1000-R13](#) [WSU090-1300-R13](#) [WSU060-1250-R13](#) [WSU060-1250-13](#) [WSU045-2000-R13](#) [WSU045-1500-R13](#)