

Category 6A Inline Connector



Category 6A Inline Connector (SG78)

This 180° connector offers a compact and flexible backwards-compatible solution for the extension, connection, relocation or repair of copper data cables. Designed for use with solid core shielded Category 6A or 7 cable, it is suitable for a wide range of cable outer diameter and core sizes.

Features

- Full compliance with Category 6A standard requirements for a consolidation point
- Quick, easy and reliable tool-less termination with 'butterfly' style levers
- High performance data throughput, easily meets Category 6A data transfer rates at permanent link level
- Robust die cast outer casing with screw fixing points

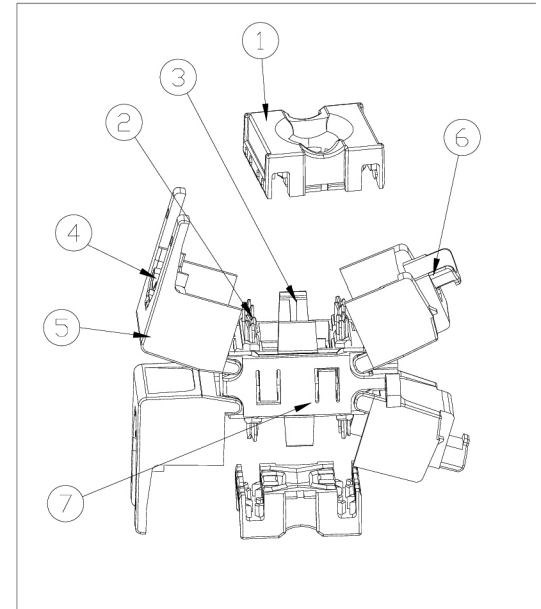
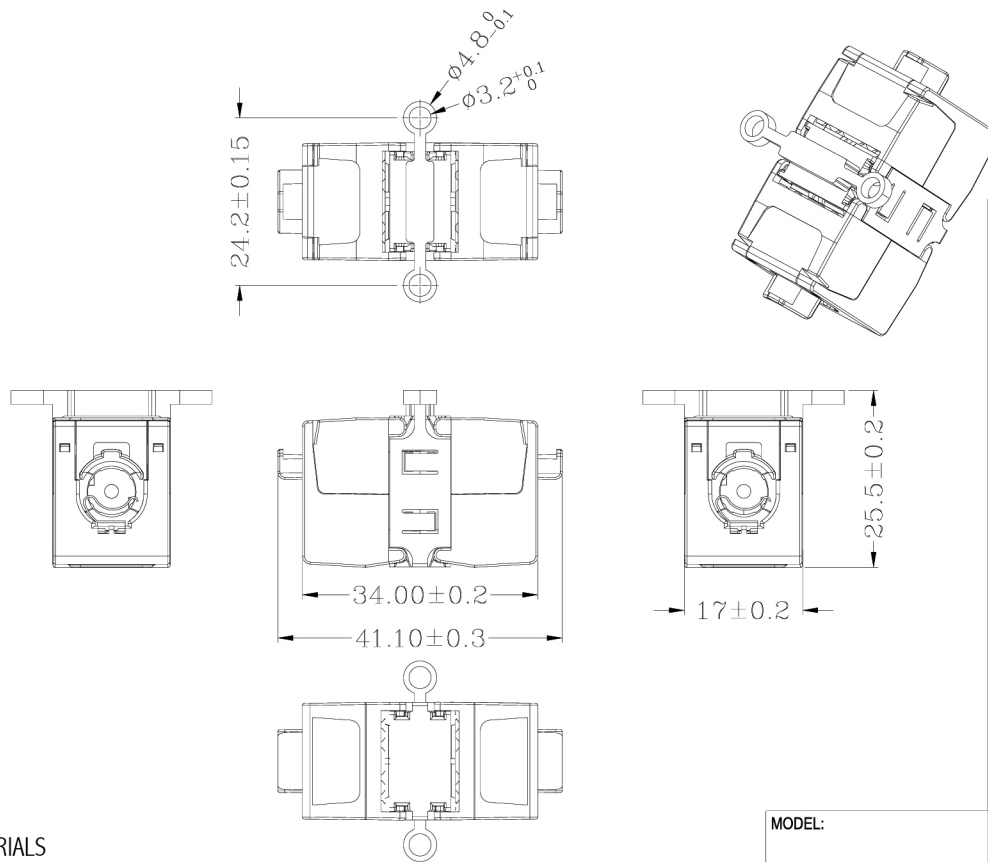
Specifications

- Weight: 34g approx
- Compact design: dimensions 41 x 26 x 29mm (approx.)
- Suitable for outer diameter 6 – 9mm, core size 0.4 – 0.64mm (22 – 26 AWG) and insulated conductor outer diameter 0.9 – 1.6mm
- Colour: Silver

Materials


- Termination cap: PC FR (black/white)
- IDC Terminals: Phosphor bronze, tin plated
- IDC Housing material: PC FR
- Ground lug: SUS304
- Housing material: Nickel plated zinc alloy

ROHS Compliant



MATERIALS

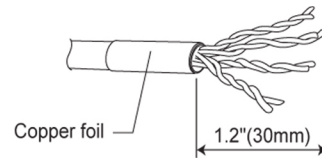
- (1) Termination cap: PC FR (Black/White)
- (2) IDC Terminals: Phosphor bronze, Tin Plated
- (3) IDC Housing: PC FR
- (4) Ground Lug: SUS304
- (5) (6) (7) Nickel Plated Zn alloy

MODEL:		Cat 6A inline connector		TUK Ltd	
		ELMA 1 <input checked="" type="checkbox"/>		ELMA2 <input type="checkbox"/>	
DRAWN:	PART NO.	/		UNIT	MM
DESIGNED:	MATERIAL			SCALE	1 : 1
CHECKED:	FINISH			SHEET	1 OF 1
	TOOLING NO.			SIZE	A4 REV. A
APPROVED:	DWG NO.				

Assembly Instructions for SG78 - Cat 6A Inline Connector

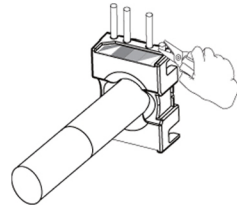
①

Strip off 30mm of cable jacket and fold braid back. Cut off aluminum foil for each pair, and use the supplied copper foil to wrap around the cable.



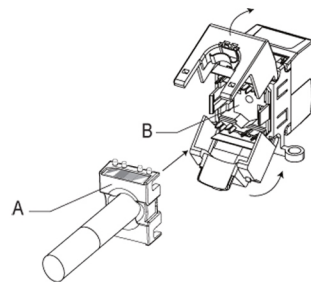
②

Insert a cable into the termination cap and fan out all four twisted pairs. Following the colour-code printed on the termination cap, carefully position conductors into the correct slots. Trim off the ends of the conductors.



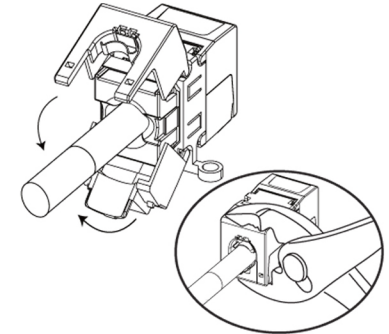
③

Match the colours on the termination cap (A) with the colours on the IDC housing (B). Insert the termination cap into the housing, ensuring the conductors fit into the correct IDC slots.



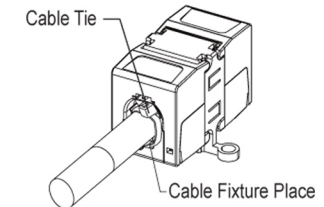
④

Close the hinged housing by using pliers; the connection is secure when the housing has snapped shut.



⑤

Use a cable tie to secure the cable into the housing.



⑥

Repeat on the opposite side.

X-ON Electronics

Largest Supplier of Electrical and Electronic Components

Click to view similar products for [Tuk](#) manufacturer:

Other Similar products are found below :

[SP1GN](#) [SP2GN](#) [SJKWHB](#) [SLJWHPM](#) [SEKH1](#) [SKFRD](#) [KCUAA2BKDPM](#) [KOCSDPM](#) [SGPDL1GY](#) [SP10YW](#) [FACBK](#) [KPH1BK](#)
[SEKEI-45WH](#) [SP0.5GN](#) [KBNC50DPM](#) [SGKH2](#) [SEPZ5YW](#) [SGPZ3BK](#) [KOCM](#) [KBNC75PM](#) [KOLSMDPM](#) [MGOPPL25](#) [KCHD90WH](#)
[KUA2WH](#) [LJNTE5A](#) [FJ445](#) [3L32BK](#) [SKH1LJ](#) [SP5RD](#) [KH1](#) [SP1RD](#) [AAVNTECC](#) [SGKSJEPM](#) [SP2YW](#) [T2079](#) [SGKSSU-45WH](#) [SG78](#)
[KRCAWHWH](#) [KRCAWHWHPM](#) [SEKEIPM](#) [ADQ88](#) [SKFWHPM](#) [SP0.5RD](#) [SP10GY](#) [SACSLJ](#) [KA6-45BKEP](#) [KOLSMDXPM](#) [SKH2](#)
[TSY](#) [KSH66WH](#)