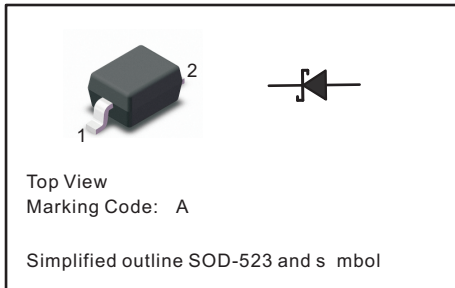


Silicon Epitaxial Planar Switching Diode
PINNING

PIN	DESCRIPTION
1	Cathode
2	Anode


FEATURES

- ◆ Fast switching speed
- ◆ Ultra-small surface mount package
- ◆ For general purpose switching applications
- ◆ High conductance

Absolute Maximum Ratings (T_a = 25 °C)

Parameter	Symbol	Value	Unit
Non-Repetitive Peak Reverse Voltage	V _{RM}	100	V
Reverse Voltage	V _R	75	V
Average Rectified Forward Current	I _{F(AV)}	125	mA
Forward Continuous Current	I _{FM}	250	mA
Non-repetitive Peak Forward Surge Current at t = 1 μs at t = 100 ms	I _{FSM}	2 1	A
Power Dissipation	P _{tot}	150	mW
Thermal Resistance Junction to Ambient Air	R _{θJA}	833	°C/W
Operating Temperature Range	T _j	- 65 to + 150	°C
Storage Temperature Range	T _{stg}	- 65 to + 150	°C

Characteristics at T_a = 25 °C

Parameter	Symbol	Min.	Max.	Unit
Forward Voltage at I _F = 1 mA at I _F = 10 mA at I _F = 50 mA at I _F = 150 mA	V _F	- - - -	0.715 0.855 1 1.25	V
Peak Reverse Current at V _R = 75 V at V _R = 20 V at V _R = 75 V, T _J = 150 °C at V _R = 25 V, T _J = 150 °C	I _R	- - - -	1 25 50 30	μA nA μA μA
Total Capacitance at V _R = 0 V, f = 1 MHz	C _T	-	2	pF
Reverse Recovery Time at I _{rr} = 0.1 X I _R , I _F = I _R = 10 mA, R _L = 100 Ω	t _{rr}	-	4	ns

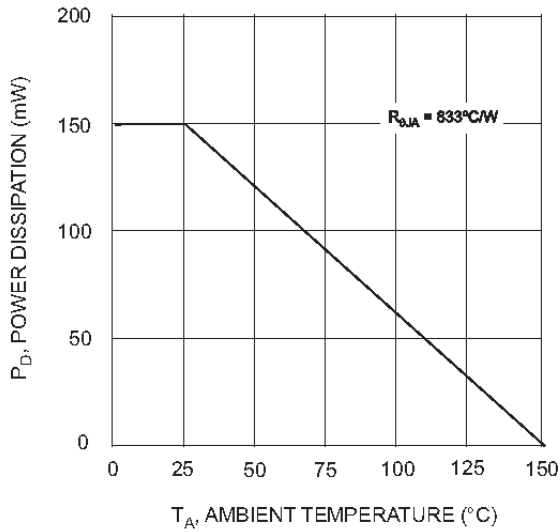


Fig. 1 Derating Curve

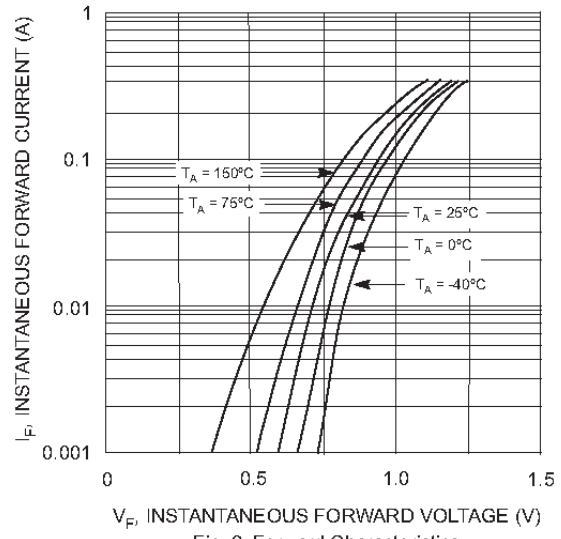


Fig. 2 Forward Characteristics

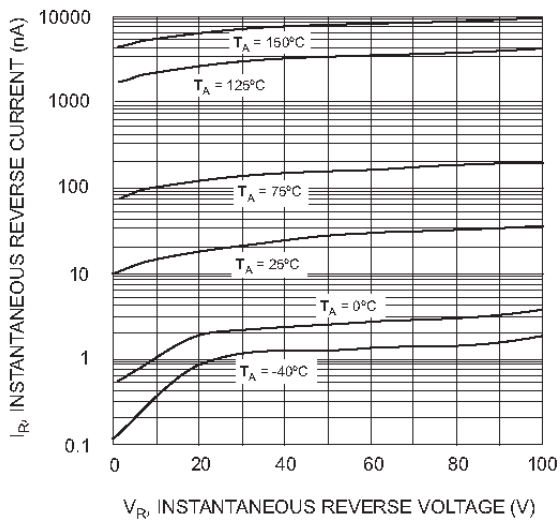


Fig. 3 Typical Reverse Characteristics

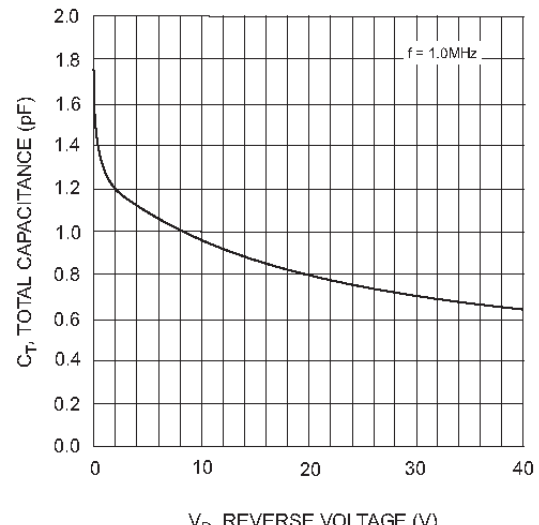
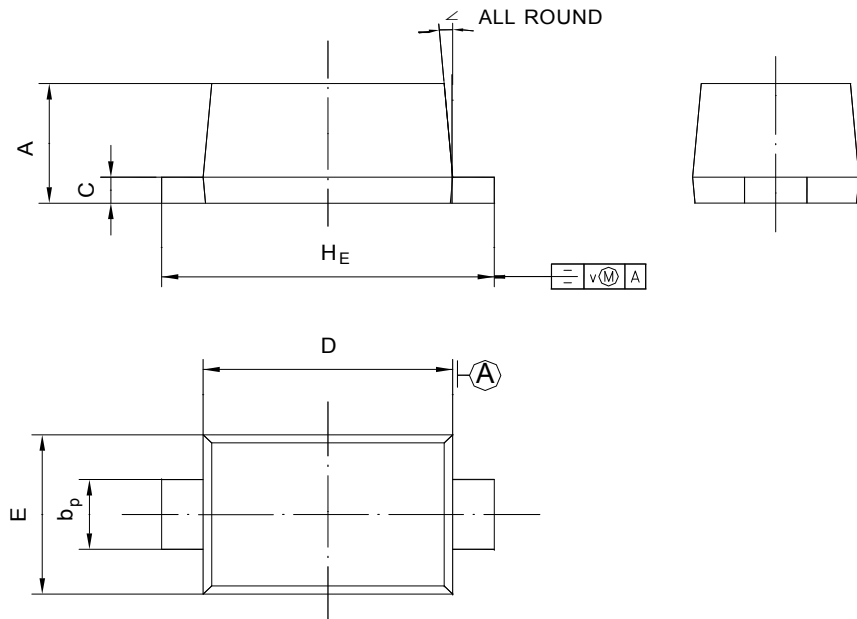


Fig. 4 Typical Capacitance vs. Reverse Voltage

PACKAGE OUTLINE

SOD-523

Plastic surface mounted package; 2 leads



UNIT	A	b _p	C	D	E	H _E	V	∠
mm	0.70	0.4	0.135	1.25	0.85	1.7	0.1	5°
	0.60	0.3	0.100	1.15	0.75	1.5		

X-ON Electronics

Largest Supplier of Electrical and Electronic Components

Click to view similar products for [Diodes - General Purpose, Power, Switching category:](#)

Click to view products by [TWGMC manufacturer:](#)

Other Similar products are found below :

[MCL4151-TR3](#) [MMBD3004S-13-F](#) [RD0306T-H](#) [RD0506LS-SB-1H](#) [RGP30G-E373](#) [DSE010-TR-E](#) [BAQ333-TR](#) [BAQ335-TR](#) [BAQ33-GS18](#) [BAS1602VH6327XT](#) [BAV17-TR](#) [BAV19-TR](#) [BAV301-TR](#) [BAW27-TAP](#) [HSC285TRF-E](#) [NSVBAV23CLT1G](#) [NTE525](#) [1SS181-TP](#) [1SS184-TP](#) [1SS193,LF](#) [1SS193-TP](#) [1SS400CST2RA](#) [SBAV99LT3G](#) [SDAA13](#) [LL4448-GS18](#) [SHN2D02FUTW1T1G](#) [LS4150GS18](#) [LS4151GS08](#) [SMMD7000LT3G](#) [FC903-TR-E](#) [1N4449](#) [1N4934-E3/73](#) [1SS226-TP](#) [APT100DL60HJ](#) [RFUH20TB3S](#) [RGP30G-E354](#) [RGP30M-E3/73](#) [D291S45T](#) [MCL4151-TR](#) [BAS 16-02V H6327](#) [BAS 21U E6327](#) [BAS 28 E6327](#) [BAS33-TAP](#) [BAS 70-02V H6327](#) [BAV300-TR](#) [BAV303-TR3](#) [BAW27-TR](#) [BAW56DWQ-7-F](#) [BAW56M3T5G](#) [BAW75-TAP](#)