

Encapsulate Three terminal voltage regulators

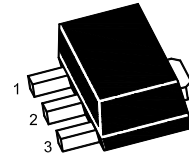
Three-terminal negative voltage regulator

FEATURES

SOT-89 Plastic Package

- Maximum output current
 $I_{OM}: 0.1\text{ A}$
- Output voltage
 $V_o: -12\text{ V}$
- Continuous total dissipation
 $P_D: 0.5\text{ W}$

1. GND
2. IN
3. OUT



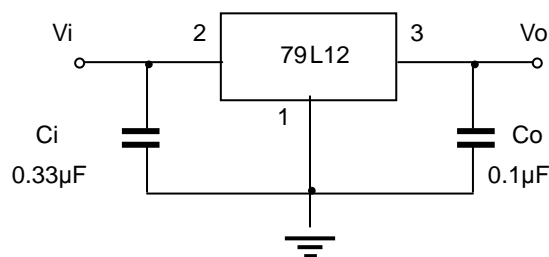
ABSOLUTE MAXIMUM RATINGS (Operating temperature range applies unless otherwise specified)

Parameter	Symbol	Value	Unit
Input Voltage	V_I	-35	V
Operating Junction Temperature Range	T_{OPR}	0~+150	°C
Storage Temperature Range	T_{STG}	-55~+150	°C

ELECTRICAL CHARACTERISTICS AT SPECIFIED VIRTUAL JUNCTION TEMPERATURE ($V_i=19V, I_o=40mA, C_i=0.33\mu F, C_o=0.1\mu F$, unless otherwise specified)

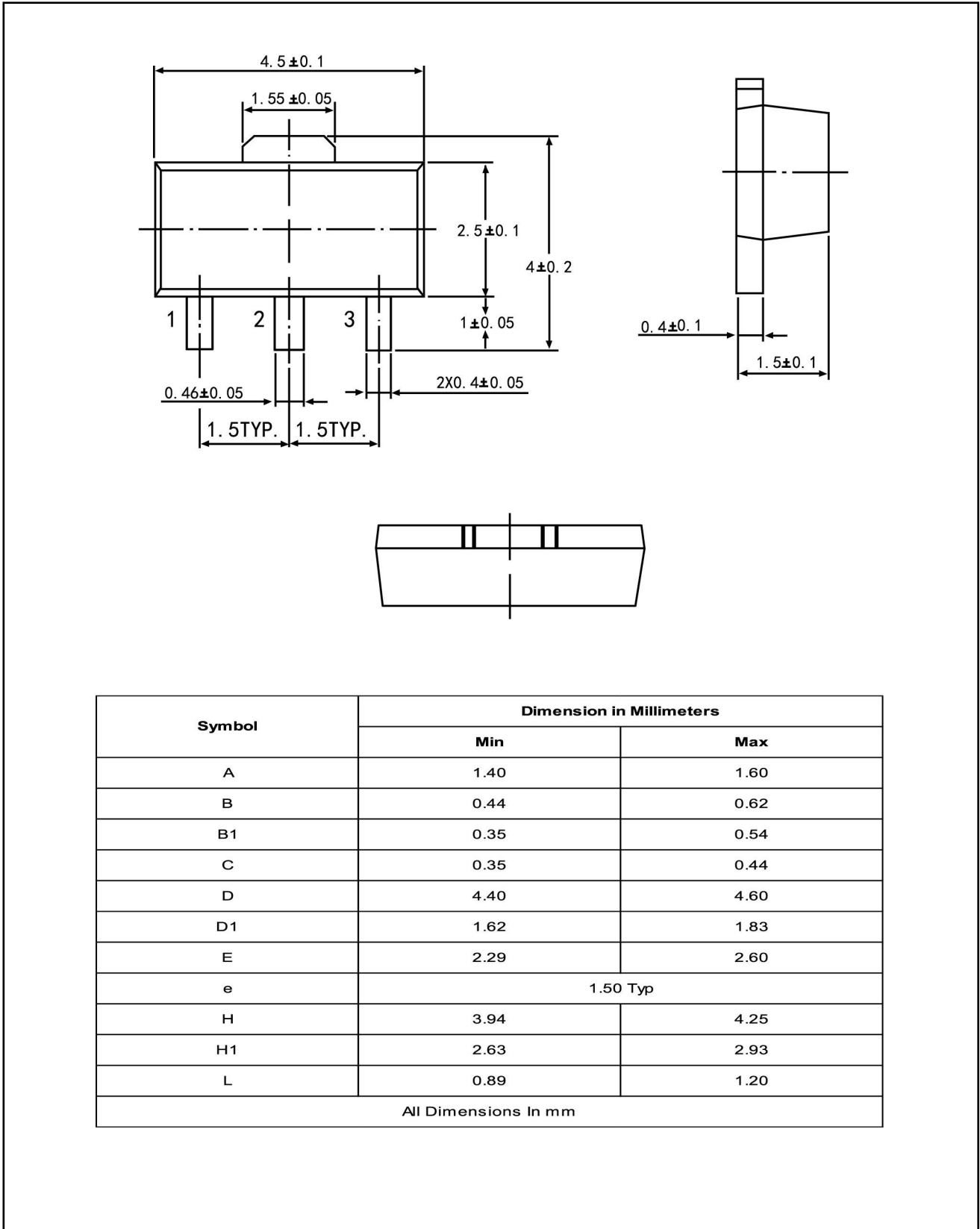
Parameter	Symbol	Test conditions	Min	Typ	Max	Unit	
Output Voltage	V_o	25°C	-11.5	-12	-12.5	V	
		0-125°C	$-14.5V \leq V_i \leq -27V, I_o=1mA \sim 40mA$	-11.4	-12	-12.6	V
			$I_o=1mA \sim 70mA$	-11.4	-12	-12.6	V
Load Regulation	ΔV_o	$I_o=1mA \sim 100mA$	25°C		24	100	mV
		$I_o=1mA \sim 40mA$	25°C		15	50	mV
Line Regulation	ΔV_o	$-14.5V \leq V_i \leq -27V$	25°C		50	250	mV
		$-16V \leq V_i \leq -27V$	25°C		40	200	mV
Quiescent Current	I_q	25°C			6.5	mA	
Quiescent Current Change	ΔI_q	$-16V \leq V_i \leq -27V$	0-125°C			1.5	mA
		$1mA \leq I_o \leq 40mA$	0-125°C			0.1	mA
Output Noise Voltage	V_N	10Hz ≤ f ≤ 100KHz	25°C		80	μV	
Ripple Rejection	RR	$-15V \leq V_i \leq -25V, f=120Hz$	0-125°C	37	42	dB	
Dropout Voltage	V_d	25°C			1.7	V	

TYPICAL APPLICATION



Note: Bypass capacitors are recommended for optimum stability and transient response and should be located as close as possible to the regulators.

SOT-89 PACKAGE OUTLINE



Symbol	Dimension in Millimeters	
	Min	Max
A	1.40	1.60
B	0.44	0.62
B1	0.35	0.54
C	0.35	0.44
D	4.40	4.60
D1	1.62	1.83
E	2.29	2.60
e	1.50 Typ	
H	3.94	4.25
H1	2.63	2.93
L	0.89	1.20
All Dimensions In mm		

X-ON Electronics

Largest Supplier of Electrical and Electronic Components

Click to view similar products for [Linear Voltage Regulators](#) category:

Click to view products by [TWGMC](#) manufacturer:

Other Similar products are found below :

[LV56831P-E](#) [LV5684PVD-XH](#) [MCDTSA6-2R](#) [L7815ACV-DG](#) [PQ3DZ53U](#) [LV56801P-E](#) [TLE42794G](#) [L78L05CZ/1SX](#) [L78LR05DL-MA-E](#) [636416C](#) [714954EB](#) [ZMR500QFTA](#) [LV5680P-E](#) [L78M15CV-DG](#) [L79M05T-E](#) [TLS202A1MBVHTSA1](#) [L78LR05D-MA-E](#) [NCV317MBTG](#) [NTE7227](#) [MP2018GZD-33-P](#) [MP2018GZD-5-P](#) [LV5680NPVC-XH](#) [LT1054CN8](#) [MP2018GZD-5-Z](#) [MP2018GZD-33-Z](#) [AT55EL50ESE](#) [APL5934DKAI-TRG](#) [78L05U](#) [78L05](#) [CL9193A15L5M](#) [CL9036A30F4M](#) [CL9036A18F4M](#) [CL9036A25F4M](#) [CL9036A28F4M](#) [CL9036A33F4M](#) [CL9906A18F4N](#) [CL9906A30F4N](#) [CL9908A30F4M](#) [CL9908A33F4M](#) [CL9908A18F4M](#) [CL9908A28F4M](#) [TL431ACM/TR](#) [TL431AIM/TR](#) [LM78L05ACM/TR](#) [HT7812ARMZ](#) [HT7805ARMZ](#) [HT317LRHZ](#) [HXY6206I-3.0](#) [HXY6206I-3.3](#) [XC6206P252MR](#) [XC6206P282MR](#)