

PXT3906 TRANSISTOR (PNP)

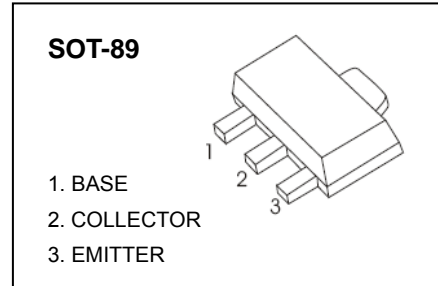
FEATURES

- Compliment to PXT3904
- Low current
- Low voltage

MARKING: 2A

MAXIMUM RATINGS (T_a=25°C unless otherwise noted)

| Symbol | Parameter | Value | Units |
|-----------------------------------|--|---------|-------|
| V _{CB0} | Collector-Base Voltage | -40 | V |
| V _{CEO} | Collector-Emitter Voltage | -40 | V |
| V _{EBO} | Emitter-Base Voltage | -6 | V |
| I _c | Collector Current -Continuous | -0.2 | A |
| P _c | Collector Power Dissipation | 0.5 | W |
| R _{θJA} | Thermal resistance from junction to ambient | 250 | °C/W |
| T _J , T _{stg} | Operation Junction and Storage Temperature Range | -55-150 | °C |

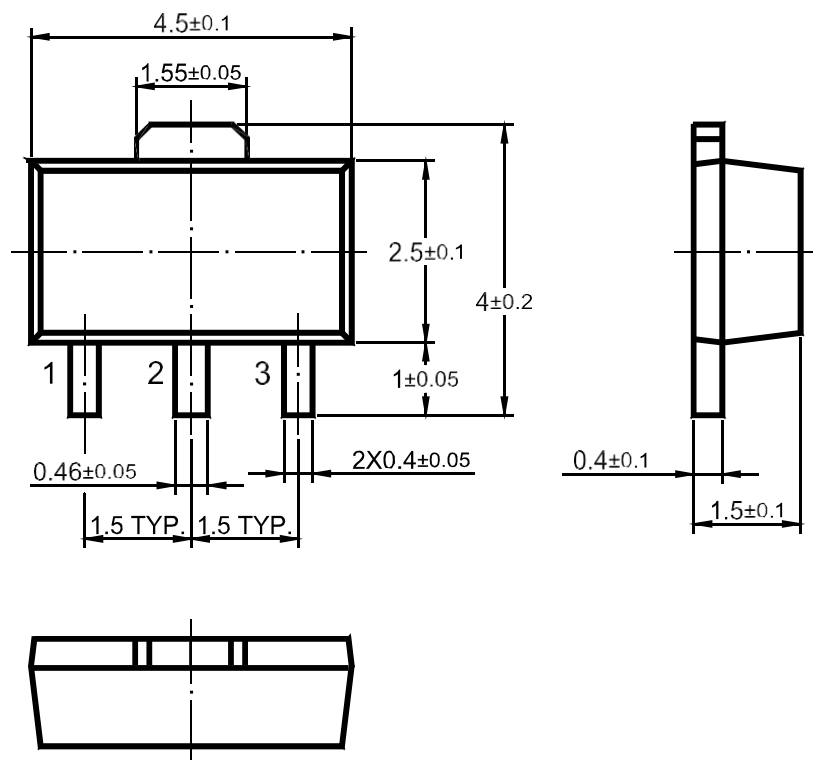


ELECTRICAL CHARACTERISTICS (T_a=25°C unless otherwise specified)

| Parameter | Symbol | Test conditions | Min | Typ | Max | Unit |
|--------------------------------------|-----------------------|---|-------|-----|-------|------|
| Collector-base breakdown voltage | V _{(BR)CBO} | I _C =-10μA, I _E =0 | -40 | | | V |
| Collector-emitter breakdown voltage | V _{(BR)CEO} | I _C =-1mA, I _B =0 | -40 | | | V |
| Emitter-base breakdown voltage | V _{(BR)EBO} | I _E =-10μA, I _C =0 | -6 | | | V |
| Collector cut-off current | I _{CBO} | V _{CB} =-30V, I _E =0 | | | -0.05 | μA |
| 9a β_{DC} cut-off current | I _{EBO} | V _{EB} =-6V, I _C =0 | | | -0.05 | μA |
| 7 c β_{DC} cut-off current | I _{CEX} | V _{CB} =-30V, V _{BE(off)} =-3V | | | -0.05 | μA |
| DC current gain | h _{FE(1)} | V _{CE} =-1V, I _C =-0.1mA | 60 | | | |
| | h _{FE(2)} | V _{CE} =-1V, I _C =-1mA | 80 | | | |
| | h _{FE(3)} | V _{CE} =-1V, I _C =-10mA | 100 | | 300 | |
| | h _{FE(4)} | V _{CE} =-1V, I _C =-50mA | 60 | | | |
| | h _{FE(5)} | V _{CE} =-1V, I _C =-100mA | 30 | | | |
| Collector-emitter saturation voltage | V _{CE(sat)1} | I _C =-10mA, I _B =-1mA | | | -0.25 | V |
| | V _{CE(sat)2} | I _C =-50mA, I _B =-5mA | | | -0.4 | V |
| Base-emitter saturation voltage | V _{BE(sat)1} | I _C =-10mA, I _B =-1mA | -0.65 | | -0.85 | V |
| | V _{BE(sat)2} | I _C =-50mA, I _B =-5mA | | | -0.95 | V |
| Transition frequency | f _T | V _{CE} =-20V, I _C =-10mA, f=100MHz | 250 | | | MHz |
| Collector capacitance | C _c | V _{CB} =-5V, I _E =0, f=1MHz | | | 4.5 | pF |
| Emitter capacitance | C _e | V _{EB} =-0.5V, I _C =0, f=1MHz | | | 10 | pF |
| Noise figure | NF | V _{CE} =-5V, I _C =-0.1mA, f=10Hz-15.7kHz, R _S =1KΩ | | | 4 | dB |
| Delay time | t _d | I _C =-10mA, I _{B1} =-I _{B2} =-1mA | | | 35 | nS |
| Rise time | t _r | | | | 35 | nS |
| Storage time | t _s | | | | 225 | nS |
| Fall time | t _f | | | | 75 | nS |

Physical Dimensions

SOT-89



Dimensions in mm

X-ON Electronics

Largest Supplier of Electrical and Electronic Components

Click to view similar products for [Bipolar Transistors - BJT category](#):

Click to view products by [TWGMC manufacturer](#):

Other Similar products are found below :

[619691C](#) [MCH4017-TL-H](#) [MMBT-2369-TR](#) [BC546/116](#) [BC557/116](#) [BSW67A](#) [NJVMJD148T4G](#) [NTE123AP-10](#) [NTE153MCP](#) [NTE16](#)
[NTE195A](#) [NTE92](#) [2N4401-A](#) [2N6728](#) [2SA1419T-TD-H](#) [2SA2126-E](#) [2SB1204S-TL-E](#) [2SC2712S-GR,LF](#) [SP000011176](#) [2N2907A](#) [2N3904-](#)
[NS](#) [2N5769](#) [2SC2412KT146S](#) [CPH6501-TL-E](#) [MCH4021-TL-E](#) [MJE340](#) [Jantx2N5416](#) [US6T6TR](#) [NJL0281DG](#) [732314D](#) [CPH3121-TL-E](#)
[CPH6021-TL-H](#) [873787E](#) [IMZ2AT108](#) [MMST8098T146](#) [UMX21NTR](#) [MCH6102-TL-E](#) [NJL0302DG](#) [30A02MH-TL-E](#) [NTE13](#) [NTE26](#)
[NTE282](#) [NTE323](#) [NTE350](#) [NTE81](#) [STX83003-AP](#) [JANTX2N2920L](#) [JANSR2N2222AUB](#) [CMLT3946EG TR](#) [2SA1371D-AE](#)