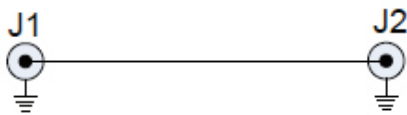


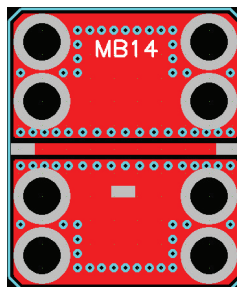
**FEATURES**

- Use for traigh-through connections
- Can also be used for custom passive networks
- RO-4350 board material
- Fits MicroAmp MH-series housings

The MicroAmp MB-14 circuit board is used for a straight-through connection with the MicroAmp MH series of connectorized housings. It can be used as an extension when designing multiple board circuits with the MH-2 housing, thereby allowing a single board to be tested before adding a second one in cascade. The MB-14 can also be used to create custom passive networks by cutting the center trace and soldering components in series or shunt. Boards are fabricated from a high-performance 13 mil thick RO-4350 laminate with RoHS compatible ENIG plating (electroless nickel/immersion gold) on both the component side and the solid bottom ground plane. The board measures 0.490" x 0.590" and mounts into the housing with four or eight #1-72 screws for optimal high frequency grounding. Pads for the input/output RF connectors allow the SMA center pins to be easily soldered to the board after it is installed into the housing.



THROUGH-LINE SCHEMATIC



ASSEMBLY

REF	SIZE	FUNCTION
J1	N/A	RF port
J2	N/A	RF port

For additional product information, please visit [www.twinind.com](http://www.twinind.com)

Contact information: 925-866-8946 (phone) 925-866-8937 (fax) Sales@twinind.com

## X-ON Electronics

Largest Supplier of Electrical and Electronic Components

*Click to view similar products for PCBs & Breadboards category:*

*Click to view products by Twin Industries manufacturer:*

Other Similar products are found below :

[8004](#) [8007](#) [8016](#) [8017](#) [8028](#) [8029](#) [1268-12](#) [1268-10](#) [1320833-1](#) [923252-R](#) [3410](#) [3396](#) [15107](#) [15101](#) [8006](#) [8015](#) [8018](#) [8019](#) [8020](#) [1268-19](#)  
[1268-20](#) [8026](#) [1239-19](#) [SBBTH1520-1](#) [SBBTH1506-1](#) [SBBTH4080-1](#) [SBBTH3030-1](#) [SBBTH1512-1](#) [SBBTH1508-1](#) [SBBSM2120-1](#)  
[SBB2808-1](#) [SBB2805-1](#) [SBB1605-1](#) [SBB1602-1](#) [SBB1005-1](#) [SBB1002-1](#) [3426](#) [32P15WE](#) [ZAS1X206203XRPU160](#) [SBBTH3040-1](#)  
[SBB0004-1](#) [SBB830-QTY10](#) [7115](#) [923749-I](#) [RE013-LF](#) [RE014-LF](#) [RE015-LF](#) [RE1210-LF](#) [RE200-C3](#) [RE210-S1](#)