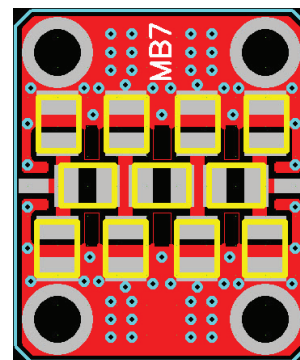


### FEATURES

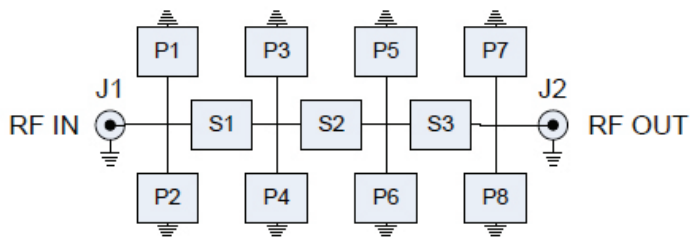
- Generic layout for passive networks
- Easily create lumped element filters, equalizers, bias networks, attenuators, etc.
- Up to three series elements
- Up to eight parallel elements
- Accommodates 0603/0805 parts
- RO-4350 board material
- Fits MicroAmp MH-series housings

The MicroAmp MB-7 circuit board is designed for rapid prototyping of passive networks such as filters, attenuators, equalizers, bias tees, etc. Passive elements such as resistors, capacitors, and inductors can be combined in a variety of series and shunt configurations. Networks can be easily designed and assembled with standard surface-mount passive components. It includes provisions for three series elements and up to eight shunt elements in either 0603 or 0805 packages. This board will fit the MicroAmp MH series of connectorized housings that allow it to be used as a single passive network or cascaded with other MicroAmp boards for added versatility. Boards are fabricated from a high-performance 13 mil thick RO-4350 laminate with RoHS compatible ENIG plating (electroless nickel/immersion gold) on both the component side and the solid bottom ground plane. The board measures 0.490" x 0.590" and mounts into the housing with four #1-72 screws. Pads for the RF connectors allow the SMA center pins to be easily soldered to the board after it is installed into the housing.

REF	SIZE	FUNCTION
S1-S3	0603/0805	Series element
P1-P8	0603/0805	Parallel element
J1		Input
J2		Output



ASSEMBLY



NETWORK SCHEMATIC

## X-ON Electronics

Largest Supplier of Electrical and Electronic Components

*Click to view similar products for PCBs & Breadboards category:*

*Click to view products by Twin Industries manufacturer:*

Other Similar products are found below :

[8004](#) [8007](#) [8016](#) [8017](#) [8028](#) [8029](#) [1268-12](#) [1268-10](#) [1320833-1](#) [923252-R](#) [3410](#) [3396](#) [15107](#) [15101](#) [8006](#) [8015](#) [8018](#) [8019](#) [8020](#) [1268-19](#)  
[1268-20](#) [8026](#) [1239-19](#) [SBBTH1520-1](#) [SBBTH1506-1](#) [SBBTH4080-1](#) [SBBTH3030-1](#) [SBBTH1512-1](#) [SBBTH1508-1](#) [SBBSM2120-1](#)  
[SBB2808-1](#) [SBB2805-1](#) [SBB1605-1](#) [SBB1602-1](#) [SBB1005-1](#) [SBB1002-1](#) [3426](#) [32P15WE](#) [ZAS1X206203XRPU160](#) [SBBTH3040-1](#)  
[SBB0004-1](#) [SBB830-QTY10](#) [7115](#) [923749-I](#) [RE013-LF](#) [RE014-LF](#) [RE015-LF](#) [RE1210-LF](#) [RE200-C3](#) [RE210-S1](#)