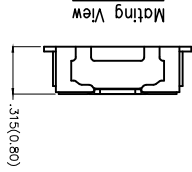
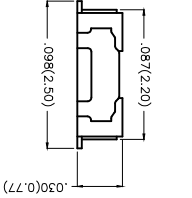


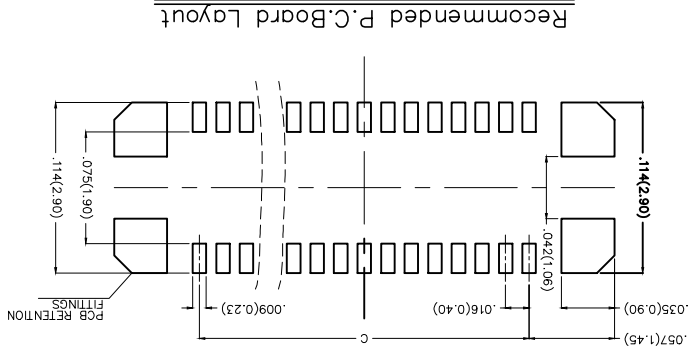
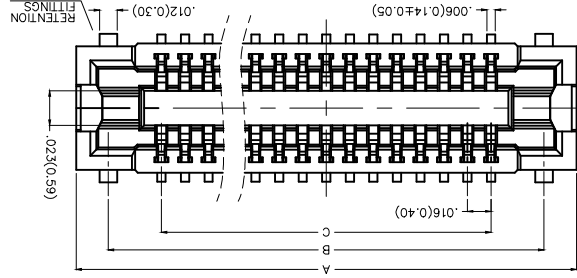
REV	LOCATIONS	DESCRIPTION	DATE	REVISER	APPD

Electrical
 Current Rating: 0.3A AC(rms)/DC
 Voltage Rating: 60V AC(rms)/DC
 Contact Resistance: 90 mΩ Max
 Insulation Resistance: 100 MΩ MIN
 Withstanding Voltage: 150V AC r.m.s
 Temperature Range—Operating: -55°C~+85°C
 Material and Plating
 Housing: LCP (UL 94V-0)
 Contact Pin: Phosphor Bronze
 Plating: Gold Plated

Circuits (n)	Part No.	Dimensions (in/mm)		
		A	B	C
24	FBF04004-F24S1XX3K6M	.287(7.30)	.244(6.20)	.173(4.40)
30	FBF04004-F30S1XX3K6M	.335(8.50)	.291(7.40)	.220(5.60)
34	FBF04004-F34S1XX3K6M	.366(9.30)	.323(8.20)	.252(6.40)
40	FBF04004-F40S1XX3K6M	.413(10.50)	.370(9.40)	.299(7.60)



Mating View



1	2	3	4	5	6	7	8	9	10	11
Category	Series Number	Distinction No.	Type	Circuits	Entry Angle	FBB-Board To Board	Thickness of Plating	Material-Resin	Color-Resin	Packaging
1	040	04	F	XX	S	1	XX	7	8	9
2	04	04	-	F	XX	S	1	XX	7	8
3	04	04	-	F	XX	S	1	XX	7	8
4	04	04	-	F	XX	S	1	XX	7	8
5	04	04	-	F	XX	S	1	XX	7	8
6	04	04	-	F	XX	S	1	XX	7	8
7	04	04	-	F	XX	S	1	XX	7	8
8	04	04	-	F	XX	S	1	XX	7	8
9	04	04	-	F	XX	S	1	XX	7	8
10	04	04	-	F	XX	S	1	XX	7	8
11	04	04	-	F	XX	S	1	XX	7	8

Ordering Information

GENERAL TOLERANCES (UNLESS SPECIFIED)	APPROVE BY	DATE	PART NO.	TM NO.
X.±.012(0.30)	FRANK	26/SEP/13	FBF04004-FXXS1XX3K6M	FBF04004-F
X.±.2	CHEERY	26/SEP/13	FBF04004-FXXS1XX3K6M	FBF04004-F
X.±.006(0.15)	DRAWN BY	DATE	TITLE	Board to Board Pitch 0.4mm 180° Vertical (SMT)
X.±.004(0.10)	JACOB	26/SEP/13	THIS DRAWING CONTAINS INFORMATION THAT IS PROPRIETARY TO TXGA INDUSTRIAL ELECTRONICS(SZ)CO.,LTD AND SHOULD NOT BE USED WITHOUT WRITTEN PERMISSION	REV 0 SHEET NO. 1/1



Leader Of Industry

REV 0 SHEET NO. 1/1

THIS DRAWING CONTAINS INFORMATION THAT IS PROPRIETARY TO TXGA INDUSTRIAL ELECTRONICS(SZ)CO.,LTD AND SHOULD NOT BE USED WITHOUT WRITTEN PERMISSION

Board to Board Pitch 0.4mm 180° Vertical (SMT)

FBF04004-F

FBF04004-FXXS1XX3K6M

DATE

26/SEP/13

CHEERY

DRAWN BY

JACOB

DATE

26/SEP/13

X.±.006(0.15)

X.±.2

X.±.012(0.30)

(UNLESS SPECIFIED)

FRANK

DATE

26/SEP/13

FBF04004-FXXS1XX3K6M

FBF04004-F

DATE

26/SEP/13

CHEERY

DRAWN BY

JACOB

DATE

26/SEP/13

X.±.006(0.15)

X.±.2

X.±.012(0.30)

(UNLESS SPECIFIED)

FRANK

DATE

26/SEP/13

FBF04004-FXXS1XX3K6M

FBF04004-F

DATE

26/SEP/13

CHEERY

DRAWN BY

JACOB

DATE

26/SEP/13

X.±.006(0.15)

X.±.2

X.±.012(0.30)

(UNLESS SPECIFIED)

FRANK

DATE

26/SEP/13

FBF04004-FXXS1XX3K6M

FBF04004-F

DATE

26/SEP/13

CHEERY

DRAWN BY

JACOB

DATE

26/SEP/13

X.±.006(0.15)

X.±.2

X.±.012(0.30)

(UNLESS SPECIFIED)

FRANK

DATE

26/SEP/13

FBF04004-FXXS1XX3K6M

FBF04004-F

DATE

26/SEP/13

CHEERY

DRAWN BY

JACOB

DATE

26/SEP/13

X.±.006(0.15)

X.±.2

X.±.012(0.30)

(UNLESS SPECIFIED)

FRANK

DATE

26/SEP/13

FBF04004-FXXS1XX3K6M

FBF04004-F

DATE

26/SEP/13

CHEERY

DRAWN BY

JACOB

DATE

26/SEP/13

X.±.006(0.15)

X.±.2

X.±.012(0.30)

(UNLESS SPECIFIED)

FRANK

DATE

26/SEP/13

FBF04004-FXXS1XX3K6M

FBF04004-F

DATE

26/SEP/13

CHEERY

DRAWN BY

JACOB

DATE

26/SEP/13

X.±.006(0.15)

X.±.2

X.±.012(0.30)

(UNLESS SPECIFIED)

FRANK

DATE

26/SEP/13

FBF04004-FXXS1XX3K6M

FBF04004-F

DATE

26/SEP/13

CHEERY

DRAWN BY

JACOB

DATE

26/SEP/13

X.±.006(0.15)

X.±.2

X.±.012(0.30)

(UNLESS SPECIFIED)

FRANK

DATE

26/SEP/13

FBF04004-FXXS1XX3K6M

FBF04004-F

DATE

26/SEP/13

CHEERY

DRAWN BY

JACOB

DATE

26/SEP/13

X.±.006(0.15)

X.±.2

X.±.012(0.30)

(UNLESS SPECIFIED)

FRANK

DATE

26/SEP/13

FBF04004-FXXS1XX3K6M

FBF04004-F

DATE

26/SEP/13

CHEERY

DRAWN BY

JACOB

DATE

26/SEP/13

X.±.006(0.15)

X.±.2

X.±.012(0.30)

(UNLESS SPECIFIED)

FRANK

DATE

26/SEP/13

FBF04004-FXXS1XX3K6M

FBF04004-F

DATE

26/SEP/13

CHEERY

DRAWN BY

JACOB

DATE

26/SEP/13

X.±.006(0.15)

X.±.2

X.±.012(0.30)

(UNLESS SPECIFIED)

FRANK

DATE

26/SEP/13

FBF04004-FXXS1XX3K6M

FBF04004-F

DATE

26/SEP/13

CHEERY

DRAWN BY

JACOB

DATE

26/SEP/13

X.±.006(0.15)

X.±.2

X.±.012(0.30)

(UNLESS SPECIFIED)

FRANK

DATE

26/SEP/13

FBF04004-FXXS1XX3K6M

FBF04004-F

DATE

26/SEP/13

CHEERY

DRAWN BY

JACOB

DATE

26/SEP/13

X.±.006(0.15)

X.±.2

X.±.012(0.30)

(UNLESS SPECIFIED)

FRANK

DATE

26/SEP/13

FBF04004-FXXS1XX3K6M

FBF04004-F

DATE

26/SEP/13

CHEERY

DRAWN BY

JACOB

DATE

26/SEP/13

X.±.006(0.15)

X.±.2

X.±.012(0.30)

X-ON Electronics

Largest Supplier of Electrical and Electronic Components

Click to view similar products for [Board to Board & Mezzanine Connectors](#) category:

Click to view products by [TXGA](#) manufacturer:

Other Similar products are found below :

[10135583-642402LF](#) [89885-310LF](#) [589158040000018](#) [6-1393048-0](#) [68683-613](#) [MDF7-12DP-2.54DSA](#) [MDF7-18P-2.54DSA\(01\)](#) [MDF7-20DP-2.54DSA](#) [MDF7-26D-2.54DSA\(55\)](#) [MDF7-3P-2.54DSA\(01\)](#) [MDF7B-20P-2.54DSA\(01\)](#) [MDF7B-3P-2.54DSA\(55\)](#) [MDF7C-11P-2.54DSA\(55\)](#) [MDF7C-18P-2.54DSA\(55\)](#) [MDF7C-5P-2.54DSA\(01\)](#) [MDF7P-5P-2.54DSA\(55\)](#) [75234-0516](#) [FCN-230C068-11](#) [FCN-268F012-G/BD](#) [FCN-268F036-G/BD](#) [FCN-268M012-G/0D](#) [FCN-268M024-G/1D](#) [FCN-360C008-C](#) [FCN-360C040-C](#) [FCN-723J004/1](#) [MIS-048-01-F-D-DP-K](#) [832-10-034-10-001000](#) [93696-325LF](#) [11828-1FA](#) [AXK630345P](#) [18097-0013](#) [ICA-328STT](#) [2007042-2](#) [304400-2](#) [FCN-214Q030-G/0](#) [FCN-215Q040-G/0](#) [FCN-230C068-ESA](#) [FCN-234P048-G/0](#) [FCN-235D050-G/C](#) [FCN-360A3](#) [FCN-360C040-B](#) [210-93-314-41-105000](#) [2-22603-0](#) [379-064-521-202](#) [MDF7-12P-2.54DSA\(01\)](#) [MDF7-16P-2.54DS\(56\)](#) [MDF7-40DP-2.54DSA\(55\)](#) [MDF7-8P-2.54DSA\(55\)](#) [MDF7B-16P-2.54DSA\(55\)](#) [AXG720047](#)