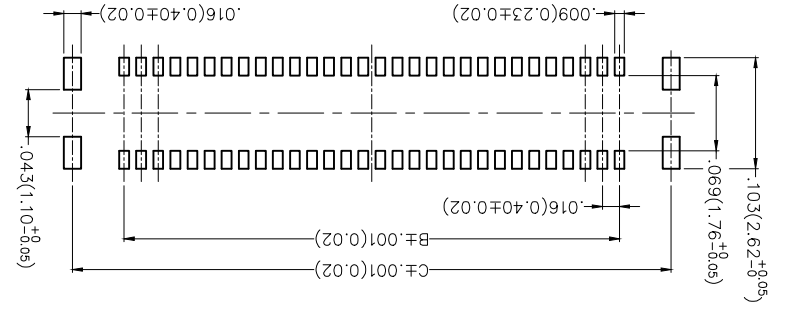
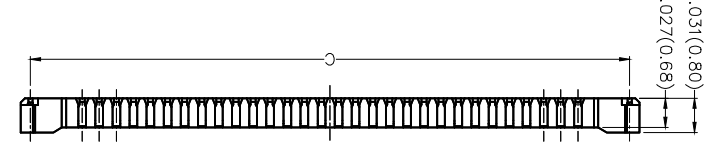
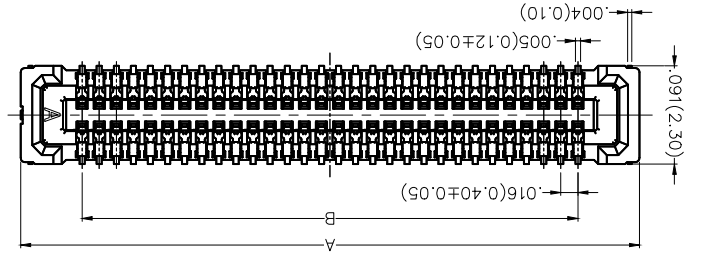
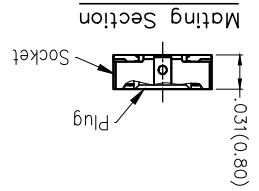


REV	LOCATIONS	DESCRIPTION	DATE	REVISER	APPD

50	FBB04005-F50S1033K6M	.491(12.48)	.378(9.60)	.473(12.02)
40	FBB04005-F40S1033K6M	.413(10.48)	.299(7.60)	.394(10.02)
30	FBB04005-F30S1033K6M	.334(8.48)	.220(5.60)	.316(8.02)
24	FBB04005-F24S1033K6M	.287(7.28)	.173(4.40)	.269(6.82)
16	FBB04005-F16S1033K6M	.224(5.68)	.110(2.80)	.206(5.22)
Circuits (n)	Part No.	A	B	C
		Dimensions(in./mm)		

Electrical
 Current Rating: 0.3A AC(rms)/DC
 Voltage Rating: 30V AC(rms)/DC
 Contact Resistance: 100 mΩ Max
 Insulation Resistance: 50 MΩ MIN
 Withstanding Voltage: 100V AC r.m.s
 Temperature Range—Operating: -35°C~+85°C
 Material and Plating
 Housing: LCP (UL 94V-0)
 Contact Pin: Phosphor Bronze
 Plating: Tin Plated/Gold Plated Over Nickel



Recommended P.C.Board Layout
 General Tolerances: ±0.05mm

1	Category	FBB-Board to Board
2	Series Number	040-Pitch 0.4mm
3	Distinction No.	05
4	Type	F-Female
5	Circuits	XX
6	Entry Angle	S-180° Vertical
7	Plating	1-Gold Plated
8	Thickness of Plating	00-Gold Flash 03-3μ"
9	Material-Resin	3-LCP
10	Color-Resin	K6-Black
11	Packaging	M-Reel

Ordering Information

FBB 040 05 - F XX S 1 03 3 K6 M

THIRD ANGLE PROJECTION	APPROVE BY	DATE	PART NO.	ITEM NO.
	FRANK	04/JUL/16	FBB04005-FXXS1033K6M	FBB04005
DESIGN UNITS Inch (metric)	CHECKED BY	DATE	TITLE	REV 0
	CHERRY	04/JUL/16	Board to Board Pitch 0.4mm 180° Vertical (SMT)	SHEET NO. 1/1
SCALE	DRAWN BY	DATE	THIS DRAWING CONTAINS INFORMATION THAT IS PROPRIETARY TO TXGA INDUSTRIAL ELECTRONICS(SZ)CO.,LTD AND SHOULD NOT BE USED WITHOUT WRITTEN PERMISSION	
5:1 A4	KATE	04/JUL/16		



X-ON Electronics

Largest Supplier of Electrical and Electronic Components

Click to view similar products for [Board to Board & Mezzanine Connectors](#) category:

Click to view products by [TXGA](#) manufacturer:

Other Similar products are found below :

[10135583-642402LF](#) [89885-310LF](#) [589158040000018](#) [6-1393048-0](#) [68683-613](#) [MDF7-12DP-2.54DSA](#) [MDF7-18P-2.54DSA\(01\)](#) [MDF7-20DP-2.54DSA](#) [MDF7-26D-2.54DSA\(55\)](#) [MDF7-3P-2.54DSA\(01\)](#) [MDF7B-20P-2.54DSA\(01\)](#) [MDF7B-3P-2.54DSA\(55\)](#) [MDF7C-11P-2.54DSA\(55\)](#) [MDF7C-18P-2.54DSA\(55\)](#) [MDF7C-5P-2.54DSA\(01\)](#) [MDF7P-5P-2.54DSA\(55\)](#) [75234-0516](#) [FCN-230C068-11](#) [FCN-268F012-G/BD](#) [FCN-268F036-G/BD](#) [FCN-268M012-G/0D](#) [FCN-268M024-G/1D](#) [FCN-360C008-C](#) [FCN-360C040-C](#) [FCN-723J004/1](#) [MIS-048-01-F-D-DP-K](#) [832-10-034-10-001000](#) [93696-325LF](#) [11828-1FA](#) [AXK630345P](#) [18097-0013](#) [ICA-328STT](#) [2007042-2](#) [304400-2](#) [FCN-214Q030-G/0](#) [FCN-215Q040-G/0](#) [FCN-230C068-ESA](#) [FCN-234P048-G/0](#) [FCN-235D050-G/C](#) [FCN-360A3](#) [FCN-360C040-B](#) [210-93-314-41-105000](#) [2-22603-0](#) [379-064-521-202](#) [MDF7-12P-2.54DSA\(01\)](#) [MDF7-16P-2.54DS\(56\)](#) [MDF7-40DP-2.54DSA\(55\)](#) [MDF7-8P-2.54DSA\(55\)](#) [MDF7B-16P-2.54DSA\(55\)](#) [AXG720047](#)