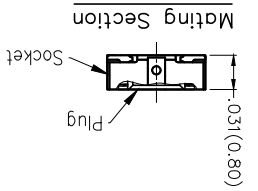


REV	LOCATIONS	DESCRIPTION	DATE	REVISER	APPD

**Electrical**  
 Current Rating: 0.3A AC(rms)/DC  
 Voltage Rating: 60V AC(rms)/DC  
 Contact Resistance: 100 mΩ Max  
 Insulation Resistance: 50 MΩ MIN  
 Withstanding Voltage: 150V AC r.m.s  
 Temperature Range—Operating: -35°C~+85°C  
 Material and Plating  
 Housing:LCP (UL 94V-0)  
 Contact Pin:Phosphor Bronze  
 Plating:Tin Plated/Gold Plated Over Nickel



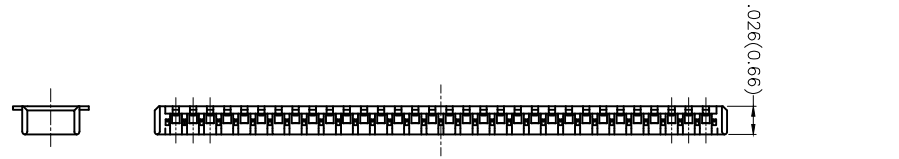
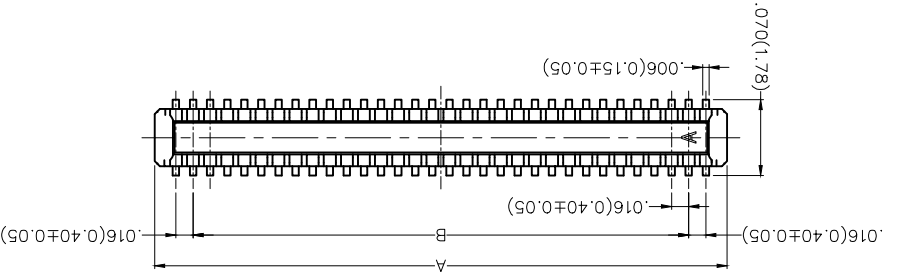
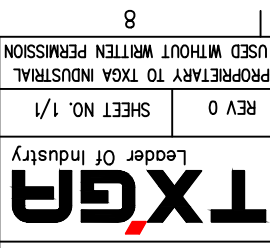
Circuits (n)	Part No.	Dimension(in/mm)	
A	B	A	B
16	FBB04005-M16S1033K6M	.181(4.60)	.110(2.80)
20	FBB04005-M20S1033K6M	.213(5.40)	.142(3.60)
24	FBB04005-M24S1033K6M	.244(6.20)	.173(4.40)
30	FBB04005-M30S1033K6M	.291(7.40)	.220(5.60)
40	FBB04005-M40S1033K6M	.370(9.40)	.299(7.60)
50	FBB04005-M50S1033K6M	.449(11.40)	.378(9.60)

### Ordering Information

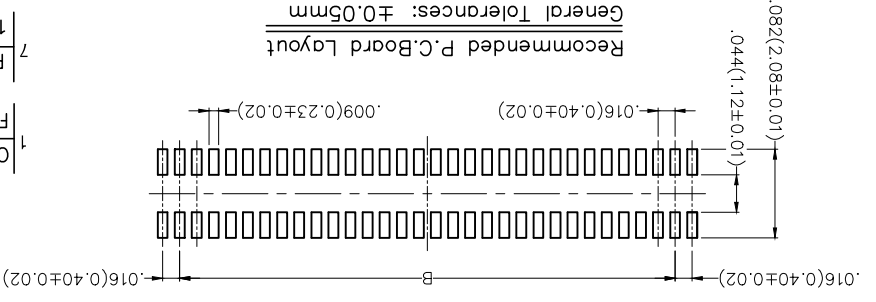
FBB 040 05 - M XX S 1 03 3 K6 M  
 1 2 3 4 5 6 7 8 9 10 11

- 1 Category
- 2 Series Number
- 3 Distinction No.
- 4 Type
- 5 Circuits
- 6 Entry Angle
- 7 Plating
- 8 Thickness of Plating
- 9 Material-Resin
- 10 Color-Resin
- 11 Packaging

THIRD ANGLE PROJECTION	APPROVE BY	DATE	PART NO.	ITEM NO.
	FRANK	04/JUL/16	FBB04005-MXXS1033K6M	FBB04005
DESIGN UNITS Inch (metric)	CHECKED BY	DATE	TITLE	REV 0
	CHEERY	04/JUL/16	Board to Board Pitch 0.4mm 180° Vertical (SMT)	SHEET NO. 1/1
SCALE	DRAWN BY	DATE	THIS DRAWING CONTAINS INFORMATION THAT IS PROPRIETARY TO TXGA INDUSTRIAL ELECTRONICS(SZ)CO.,LTD AND SHOULD NOT BE USED WITHOUT WRITTEN PERMISSION	
5:1	KATE	04/JUL/16		



Recommended P.C.Board Layout  
 General Tolerances: ±0.05mm



## X-ON Electronics

Largest Supplier of Electrical and Electronic Components

*Click to view similar products for [Board to Board & Mezzanine Connectors](#) category:*

*Click to view products by [TXGA](#) manufacturer:*

Other Similar products are found below :

[10135583-642402LF](#) [89885-310LF](#) [589158040000018](#) [6-1393048-0](#) [68683-613](#) [MDF7-12DP-2.54DSA](#) [MDF7-18P-2.54DSA\(01\)](#) [MDF7-20DP-2.54DSA](#) [MDF7-26D-2.54DSA\(55\)](#) [MDF7-3P-2.54DSA\(01\)](#) [MDF7B-20P-2.54DSA\(01\)](#) [MDF7B-3P-2.54DSA\(55\)](#) [MDF7C-11P-2.54DSA\(55\)](#) [MDF7C-18P-2.54DSA\(55\)](#) [MDF7C-5P-2.54DSA\(01\)](#) [MDF7P-5P-2.54DSA\(55\)](#) [75234-0516](#) [FCN-230C068-11](#) [FCN-268F012-G/BD](#) [FCN-268F036-G/BD](#) [FCN-268M012-G/0D](#) [FCN-268M024-G/1D](#) [FCN-360C008-C](#) [FCN-360C040-C](#) [FCN-723J004/1](#) [MIS-048-01-F-D-DP-K](#) [832-10-034-10-001000](#) [93696-325LF](#) [11828-1FA](#) [AXK630345P](#) [18097-0013](#) [ICA-328STT](#) [2007042-2](#) [304400-2](#) [FCN-214Q030-G/0](#) [FCN-215Q040-G/0](#) [FCN-230C068-ESA](#) [FCN-234P048-G/0](#) [FCN-235D050-G/C](#) [FCN-360A3](#) [FCN-360C040-B](#) [210-93-314-41-105000](#) [2-22603-0](#) [379-064-521-202](#) [MDF7-12P-2.54DSA\(01\)](#) [MDF7-16P-2.54DS\(56\)](#) [MDF7-40DP-2.54DSA\(55\)](#) [MDF7-8P-2.54DSA\(55\)](#) [MDF7B-16P-2.54DSA\(55\)](#) [AXG720047](#)