

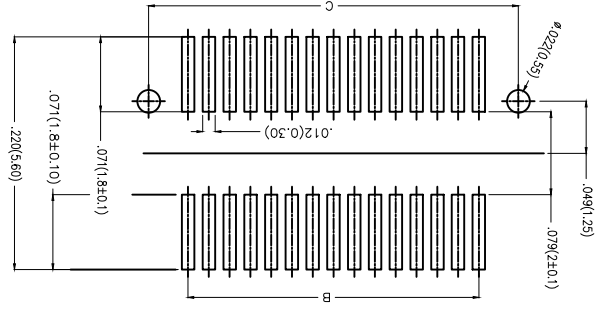
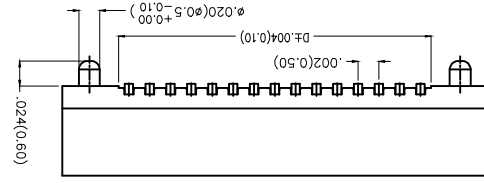
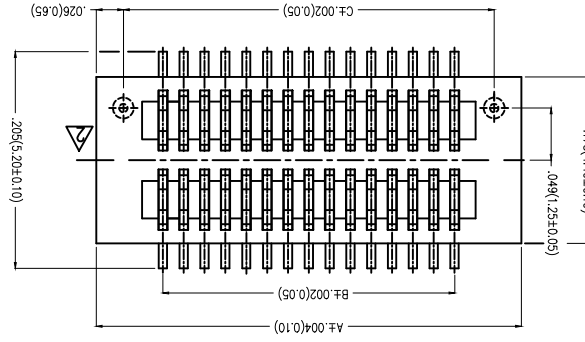
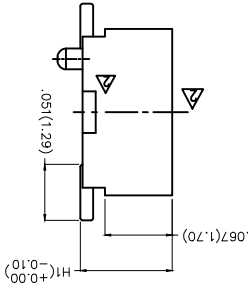
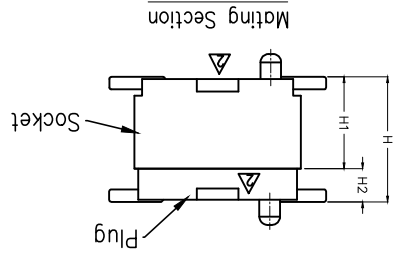
REV	LOCATIONS	DESCRIPTION	DATE	REVISER	APPD
1		Part No. Change:FR-050FSS-DXX-HXX To FBB05002-FXXS1XX3XXM-HXX	29/OCT/13	JACOB	CHERRY
2		Structure Change	26/DEC/18	CHERRY	KATE
3		Add packaging specification	05/DEC/19	KATE	CHERRY

Electrical
 Current Rating: 0.5A AC(rms)/DC
 Voltage Rating: 50V AC(rms)/DC
 Contact Resistance: 40 mΩ Max
 Insulation Resistance: 100 MΩ MIN
 Withstanding Voltage: 250V AC r.m.s
 Temperature Range-Operating: -25°C~+85°C
 Material and Plating
 Housing: LCP (UL 94V-0)
 Contact Pin: Phosphor Bronze
 Plating: Gold Plated

Height H1(in/mm)	Female H1(in/mm)	Male H2(in/mm)
.118(3.00)	.087(2.20)	.031(0.80)
.138(3.50)	.087(2.20)	.051(1.30)
.157(4.00)	.118(3.00)	.039(1.00)
.177(4.50)	.138(3.50)	.039(1.00)
.197(5.00)	.157(4.00).118(3.00)	.039(1.00).079(2.00)
.217(5.50)	.177(4.50)	.039(1.00)
.236(6.00)	.157(4.00)	.079(2.00)
.256(6.50)	.177(4.50)	.079(2.00)

Ordering Information

FBB 050 02 - F XX S 1 XX 3 XX M HXX
 1 Series Number 2 050-Pitch0.5mm 3 Distinction No. 4 Type 5 Circuits XX 6 Entry Angle S-180° Vertical 7 FBB-Board To Board 8 03-Gold Flash 9 Material-Resin 10 Color-Resin 11 M-Reel 12 Female Height



1	Category	2	Series Number	3	Distinction No.	4	Type	5	Circuits	6	Entry Angle
1	FBB-Board To Board	2	050-Pitch0.5mm	3		4	F-Female	5	XX	6	S-180° Vertical
7	Plating	8	Thickness of Plating	9	Material-Resin	10	Color-Resin	11	Packageing	12	Female Height
7	1-Gold Plated	8	03-3µ"	9	3-LCP	10	W5-Black K6-White	11	M-Reel	12	H22-2.2mm H30-3.0mm

DATE	APPROVE BY	CHECKED BY	DATE	DATE	DATE
26/SEP/13	FRANK	X.F.5	26/SEP/13	26/SEP/13	26/SEP/13
26/SEP/13	CHEERY	X.F.2	26/SEP/13	26/SEP/13	26/SEP/13
26/SEP/13	JACOB	X.X.F.1	26/SEP/13	26/SEP/13	26/SEP/13

GENERAL TOLERANCES (UNLESS SPECIFIED)	APPROVE BY	DATE	PART NO.	ITEM NO.
X±.012(0.30)	FRANK	26/SEP/13	FBB05002-FXXS1XX3XXMHHXX	FBB05002-F
X.X±.006(0.15)	FRANK	26/SEP/13	FBB05002-FXXS1XX3XXMHHXX	FBB05002-F
X.XXX±.004(0.10)	FRANK	26/SEP/13	FBB05002-FXXS1XX3XXMHHXX	FBB05002-F

THIRD ANGLE PROJECTION	DESIGN UNITS	SCALE	SIZE
	Inch (metric)	5:1	A4

THIS DRAWING CONTAINS INFORMATION THAT IS PROPRIETARY TO TXGA INDUSTRIAL ELECTRONICS(S)Z)CO.,LTD AND SHOULD NOT BE USED WITHOUT WRITTEN PERMISSION



8 SHEET NO. 1/3
 REV 3
 Board to Board Pitch 0.5mm 180° Vertical (SMT)

REV	LOCATIONS	DESCRIPTION	DATE	REVISER	APPD

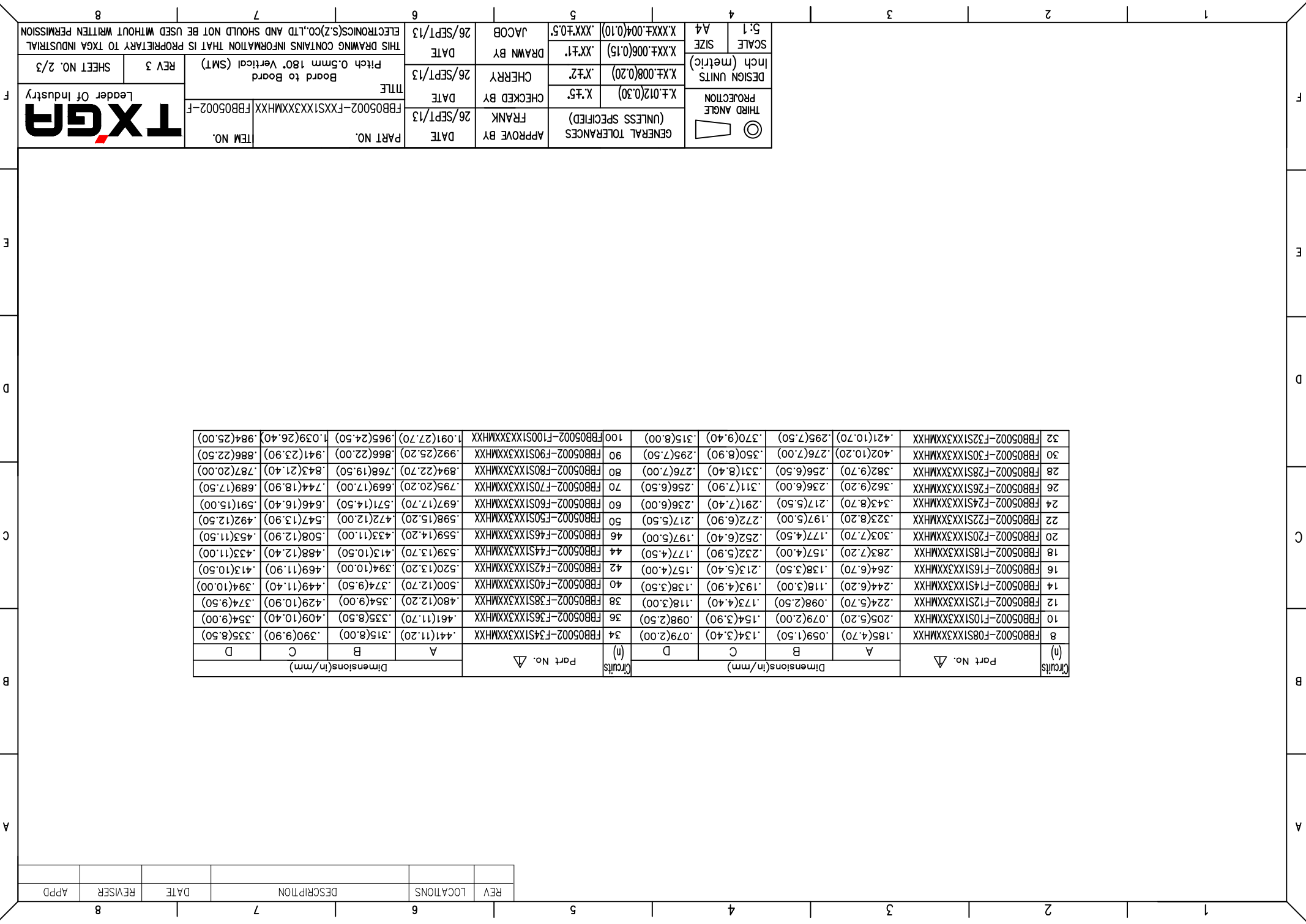
Circuits	Part No. ∇			Dimensions(in/mm)		
	A	B	C	A	B	C
8	FBB05002-F08S1XX3XXMHXX	.185(4.70)	.059(1.50)	.134(3.40)	.079(2.00)	.185(4.70)
10	FBB05002-F10S1XX3XXMHXX	.205(5.20)	.079(2.00)	.154(3.90)	.098(2.50)	.205(5.20)
12	FBB05002-F12S1XX3XXMHXX	.224(5.70)	.098(2.50)	.173(4.40)	.118(3.00)	.224(5.70)
14	FBB05002-F14S1XX3XXMHXX	.244(6.20)	.118(3.00)	.193(4.90)	.138(3.50)	.244(6.20)
16	FBB05002-F16S1XX3XXMHXX	.264(6.70)	.138(3.50)	.213(5.40)	.157(4.00)	.264(6.70)
18	FBB05002-F18S1XX3XXMHXX	.283(7.20)	.157(4.00)	.232(5.90)	.177(4.50)	.283(7.20)
20	FBB05002-F20S1XX3XXMHXX	.303(7.70)	.177(4.50)	.252(6.40)	.197(5.00)	.303(7.70)
22	FBB05002-F22S1XX3XXMHXX	.323(8.20)	.197(5.00)	.272(6.90)	.217(5.50)	.323(8.20)
24	FBB05002-F24S1XX3XXMHXX	.343(8.70)	.217(5.50)	.291(7.40)	.236(6.00)	.343(8.70)
26	FBB05002-F26S1XX3XXMHXX	.362(9.20)	.236(6.00)	.311(7.90)	.256(6.50)	.362(9.20)
28	FBB05002-F28S1XX3XXMHXX	.382(9.70)	.256(6.50)	.331(8.40)	.276(7.00)	.382(9.70)
30	FBB05002-F30S1XX3XXMHXX	.402(10.20)	.276(7.00)	.350(8.90)	.295(7.50)	.402(10.20)
32	FBB05002-F32S1XX3XXMHXX	.421(10.70)	.295(7.50)	.370(9.40)	.315(8.00)	.421(10.70)

Part No. ∇	Dimensions(in/mm)		
	A	B	C
FBB05002-F34S1XX3XXMHXX	.441(11.20)	.315(8.00)	.390(9.90)
FBB05002-F36S1XX3XXMHXX	.461(11.70)	.335(8.50)	.409(10.40)
FBB05002-F38S1XX3XXMHXX	.480(12.20)	.354(9.00)	.429(10.90)
FBB05002-F40S1XX3XXMHXX	.500(12.70)	.374(9.50)	.449(11.40)
FBB05002-F42S1XX3XXMHXX	.520(13.20)	.394(10.00)	.469(11.90)
FBB05002-F44S1XX3XXMHXX	.539(13.70)	.413(10.50)	.488(12.40)
FBB05002-F46S1XX3XXMHXX	.559(14.20)	.433(11.00)	.508(12.90)
FBB05002-F50S1XX3XXMHXX	.598(15.20)	.472(12.00)	.547(13.90)
FBB05002-F60S1XX3XXMHXX	.697(17.70)	.571(14.50)	.646(16.40)
FBB05002-F70S1XX3XXMHXX	.795(20.20)	.669(17.00)	.744(18.90)
FBB05002-F80S1XX3XXMHXX	.894(22.70)	.768(19.50)	.843(21.40)
FBB05002-F90S1XX3XXMHXX	.992(25.20)	.866(22.00)	.941(23.90)
FBB05002-F100S1XX3XXMHXX	1.091(27.70)	.965(24.50)	1.039(26.40)

DATE	26/SEP/13	APPROVE BY	FRANK	THIRD ANGLE	
DATE	26/SEP/13	CHECKED BY	FRANK	DESIGN UNITS	Inch (metric)
DATE	26/SEP/13	DRAWN BY	JACOB	SCALE	5:1
DATE	26/SEP/13	DATE	26/SEP/13	SIZE	A4
GENERAL TOLERANCES (UNLESS SPECIFIED)	X ±.012(0.30)	X.XX ±.006(0.15)	X.XX ±.004(0.10)	X.XX ±.004(0.10)	X.XX ±.004(0.10)

TXGR
Leader Of Industry

THIS DRAWING CONTAINS INFORMATION THAT IS PROPRIETARY TO TXGA INDUSTRIAL ELECTRONICS(S)Z)CO.,LTD AND SHOULD NOT BE USED WITHOUT WRITTEN PERMISSION

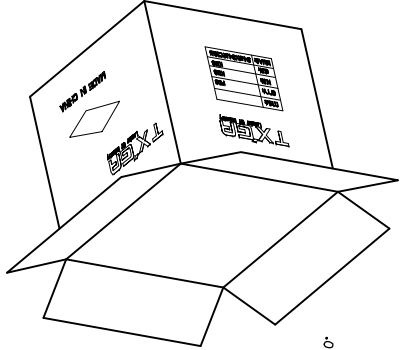
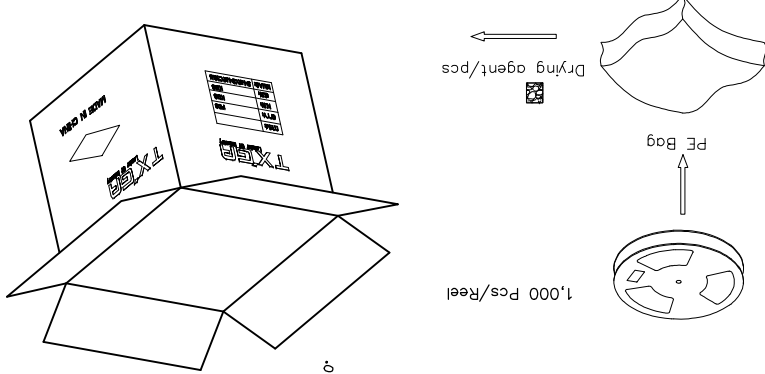
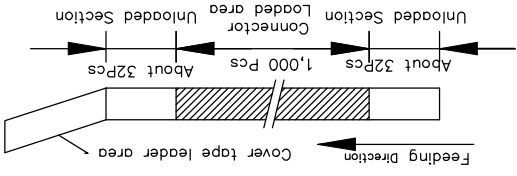


REV	LOCATIONS	DESCRIPTION	DATE	REVISER	APPD

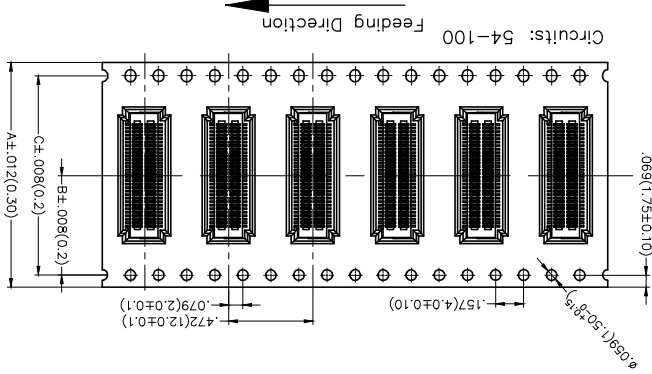
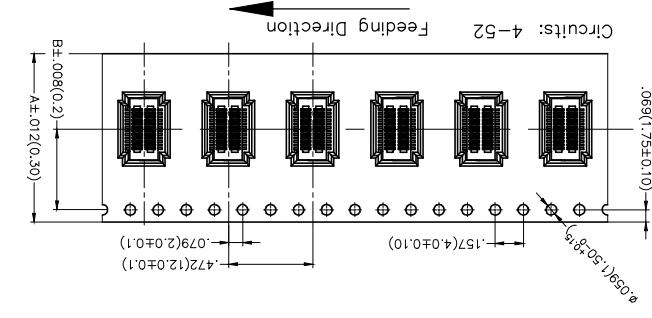
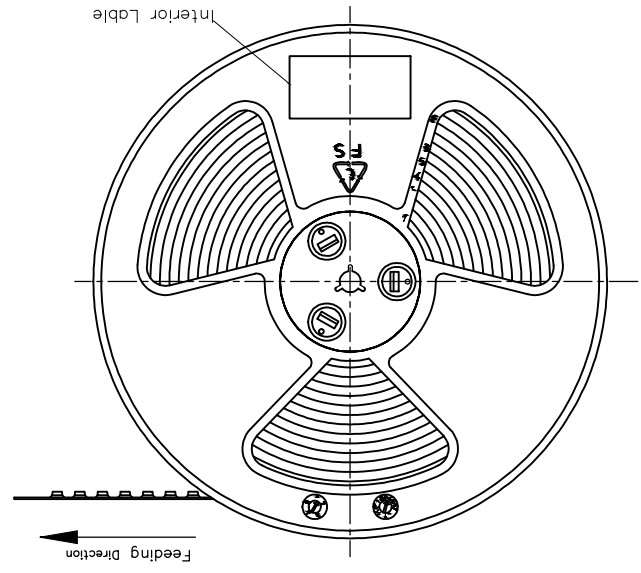
Note:

1. 10 sprocket hole cumulative tolerance±0.2
2. Carrier camber is within 1.0mm in 100mm
3. Material: Black Conductive polystyrene Alloy 100% recyclable
4. All dimensions meet EIA-481-B requirements
5. Peel off force of cover tape&carrier tape:20g~130g(0.2N~1.3N)
6. Component load per 13" reel: 1,000 pcs

Circuits	(n)	A	B	C
4~20	630(16.0)	.295(7.50)	—	—
22~52	.945(24.0)	.453(11.50)	—	—
54~70	1.260(32.0)	.561(14.25)	1.122(28.50)	—
72~100	1.732(44.0)	.797(20.25)	1.594(40.50)	—



THIRD ANGLE PROJECTION	DESIGN UNITS	SCALE	SIZE	5:1	A4
○	X.±.012(0.30)	Inch (metric)	X.XX±.006(0.15)		
○	X.±.2		X.XX±.004(0.10)		
	X.±.5		.XXX±0.5		
APPROVE BY	DATE	PART NO.	ITEM NO.	Leader Of Industry	
FRANK	05/DEC/19	FBB05002-F	FBB05002-F	TXGA	
CHECKED BY	DATE	TITLE			
CHERY	05/DEC/19	Board to Board			
DRAWN BY	DATE	Pitch 0.5mm 180° Vertical (SMT)			
KATE	05/DEC/19	REV 3 SHEET NO. 3/3			
GENERAL TOLERANCES (UNLESS SPECIFIED)	APPROVE BY	DATE	ELECTRONICS(Z)CO.,LTD AND SHOULD NOT BE USED WITHOUT WRITTEN PERMISSION		
	FRANK	05/DEC/19	THIS DRAWING CONTAINS INFORMATION THAT IS PROPRIETARY TO TXGA INDUSTRIAL		



X-ON Electronics

Largest Supplier of Electrical and Electronic Components

Click to view similar products for [Board to Board & Mezzanine Connectors](#) category:

Click to view products by [TXGA](#) manufacturer:

Other Similar products are found below :

[10135583-642402LF](#) [89885-310LF](#) [589158040000018](#) [6-1393048-0](#) [68683-613](#) [MDF7-12DP-2.54DSA](#) [MDF7-18P-2.54DSA\(01\)](#) [MDF7-20DP-2.54DSA](#) [MDF7-26D-2.54DSA\(55\)](#) [MDF7-3P-2.54DSA\(01\)](#) [MDF7B-20P-2.54DSA\(01\)](#) [MDF7B-3P-2.54DSA\(55\)](#) [MDF7C-11P-2.54DSA\(55\)](#) [MDF7C-18P-2.54DSA\(55\)](#) [MDF7C-5P-2.54DSA\(01\)](#) [MDF7P-5P-2.54DSA\(55\)](#) [75234-0516](#) [FCN-230C068-11](#) [FCN-268F012-G/BD](#) [FCN-268F036-G/BD](#) [FCN-268M012-G/0D](#) [FCN-268M024-G/1D](#) [FCN-360C008-C](#) [FCN-360C040-C](#) [FCN-723J004/1](#) [MIS-048-01-F-D-DP-K](#) [832-10-034-10-001000](#) [93696-325LF](#) [11828-1FA](#) [AXK630345P](#) [18097-0013](#) [ICA-328STT](#) [2007042-2](#) [304400-2](#) [FCN-214Q030-G/0](#) [FCN-215Q040-G/0](#) [FCN-230C068-ESA](#) [FCN-234P048-G/0](#) [FCN-235D050-G/C](#) [FCN-360A3](#) [FCN-360C040-B](#) [210-93-314-41-105000](#) [2-22603-0](#) [379-064-521-202](#) [MDF7-12P-2.54DSA\(01\)](#) [MDF7-16P-2.54DS\(56\)](#) [MDF7-40DP-2.54DSA\(55\)](#) [MDF7-8P-2.54DSA\(55\)](#) [MDF7B-16P-2.54DSA\(55\)](#) [AXG720047](#)