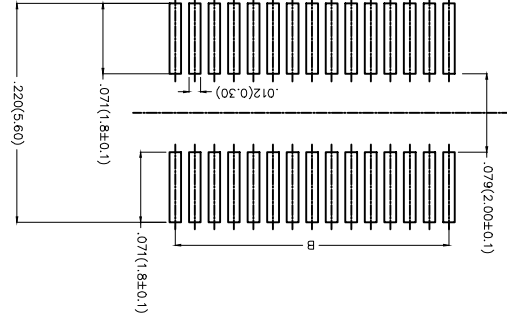
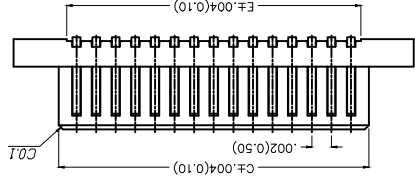
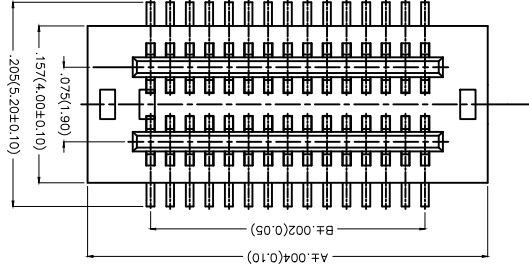
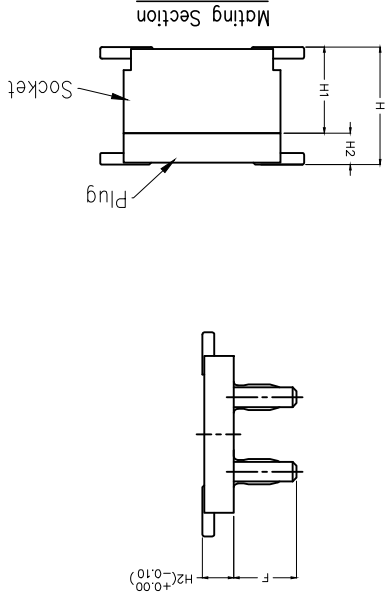


REV	LOCATIONS	DESCRIPTION	DATE	REVISER	APPD
1			12/JUN/17	JACOB	CHERRY

**Electrical**  
 Current Rating: 0.5A AC(rms)/DC  
 Voltage Rating: 50V AC(rms)/DC  
 Contact Resistance: 40 mΩ Max  
 Insulation Resistance: 100 MΩ MIN  
 Withstanding Voltage: 250V AC r.m.s  
 Temperature Range—Operating: -25°C~+85°C  
 Material and Plating  
 Housing: LCP (UL 94V-0)  
 Contact Pin: Phosphor Bronze  
 Plating: Gold Plated

Height H1(in/mm)	Female H2(in/mm)	Male H2(in/mm)	F(in/mm)
.118(3.00)	.087(2.20)	.031(0.80)	.063(1.60)
.138(3.50)	.087(2.20)	.051(1.30)	.063(1.60)
.157(4.00)	.118(3.00)	.039(1.00)	.075(1.90)
.177(4.50)	.138(3.50)	.039(1.00)	.075(1.90)
.197(5.00)	.157(4.00)	.039(1.00)	.075(1.90)
.217(5.50)	.177(4.50)	.039(1.00)	.075(1.90)
.236(6.00)	.157(4.00)	.079(2.00)	.075(1.90)
.256(6.50)	.177(4.50)	.079(2.00)	.075(1.90)



Recommended P.C.Board Layout

THIRD ANGLE PROJECTION	DESIGN UNITS	SCALE
	Inch (metric)	5:1
	X.±.008(0.20)	A4
	X.±.006(0.15)	X.XX±.004(0.10)

GENERAL TOLERANCES (UNLESS SPECIFIED)	APPROVE BY	DATE	PART NO.
	FRANK	26/SEP/13	FB05003-M
	CHECKED BY	DATE	TITLE
	CHEERY	26/SEP/13	Board to Board Pitch 0.5mm 180° Vertical (SMT)
	DRAWN BY	DATE	REV 1
	JACOB	26/SEP/13	SHEET NO. 1/2

THIS DRAWING CONTAINS INFORMATION THAT IS PROPRIETARY TO TXGA INDUSTRIAL ELECTRONICS(SZ)CO.,LTD AND SHOULD NOT BE USED WITHOUT WRITTEN PERMISSION			
LEADER OF INDUSTRY	TXGA	REV 1	SHEET NO. 1/2

Ordering Information

FBB 050 03 - M XX S 1 XX 3 XX M HXX  
 1 2 3 4 5 6 7 8 9 10 11 12

1	Category	FBB-Board To Board
2	Series Number	050-Pitch0.5mm
3	Distinction No.	03
4	Type	M-Male
5	Circuits	XX
6	Entry Angle	S-180° Vertical
7	Plating	1-Gold Plated
8	Thickness of Plating	00-Gold Flash 03-3µ"
9	Material-Resin	3-LCP
10	Color-Resin	K6-Black W5-White
11	Packaging	M-Reel
12	Male Height	H08-0.8mm H13-1.3mm

Circuits	Part No.	Dimensions(in/mm)				
		A	B	C	D	E
10	FB05003-M10S1XX3XXMHXX	.205(5.20)	.079(2.00)	.114(2.90)	.154(3.90)	.098(2.50)
12	FB05003-M12S1XX3XXMHXX	.224(5.70)	.098(2.50)	.154(3.90)	.173(4.40)	.118(3.00)
14	FB05003-M14S1XX3XXMHXX	.244(6.20)	.118(3.00)	.154(3.90)	.193(4.90)	.138(3.50)
16	FB05003-M16S1XX3XXMHXX	.264(6.70)	.138(3.50)	.173(4.40)	.213(5.40)	.157(4.00)
18	FB05003-M18S1XX3XXMHXX	.283(7.20)	.157(4.00)	.193(4.90)	.232(5.90)	.177(4.50)
20	FB05003-M20S1XX3XXMHXX	.303(7.70)	.177(4.50)	.213(5.40)	.252(6.40)	.197(5.00)
22	FB05003-M22S1XX3XXMHXX	.323(8.20)	.197(5.00)	.232(5.90)	.272(6.90)	.217(5.50)
24	FB05003-M24S1XX3XXMHXX	.343(8.70)	.217(5.50)	.252(6.40)	.291(7.40)	.236(6.00)
26	FB05003-M26S1XX3XXMHXX	.362(9.20)	.236(6.00)	.272(6.90)	.311(7.90)	.256(6.50)
28	FB05003-M28S1XX3XXMHXX	.382(9.70)	.256(6.50)	.291(7.40)	.331(8.40)	.276(7.00)
30	FB05003-M30S1XX3XXMHXX	.402(10.20)	.276(7.00)	.311(7.90)	.350(8.90)	.295(7.50)
32	FB05003-M32S1XX3XXMHXX	.421(10.70)	.295(7.50)	.331(8.40)	.370(9.40)	.315(8.00)
34	FB05003-M34S1XX3XXMHXX	.441(11.20)	.315(8.00)	.350(8.90)	.390(9.90)	.335(8.50)

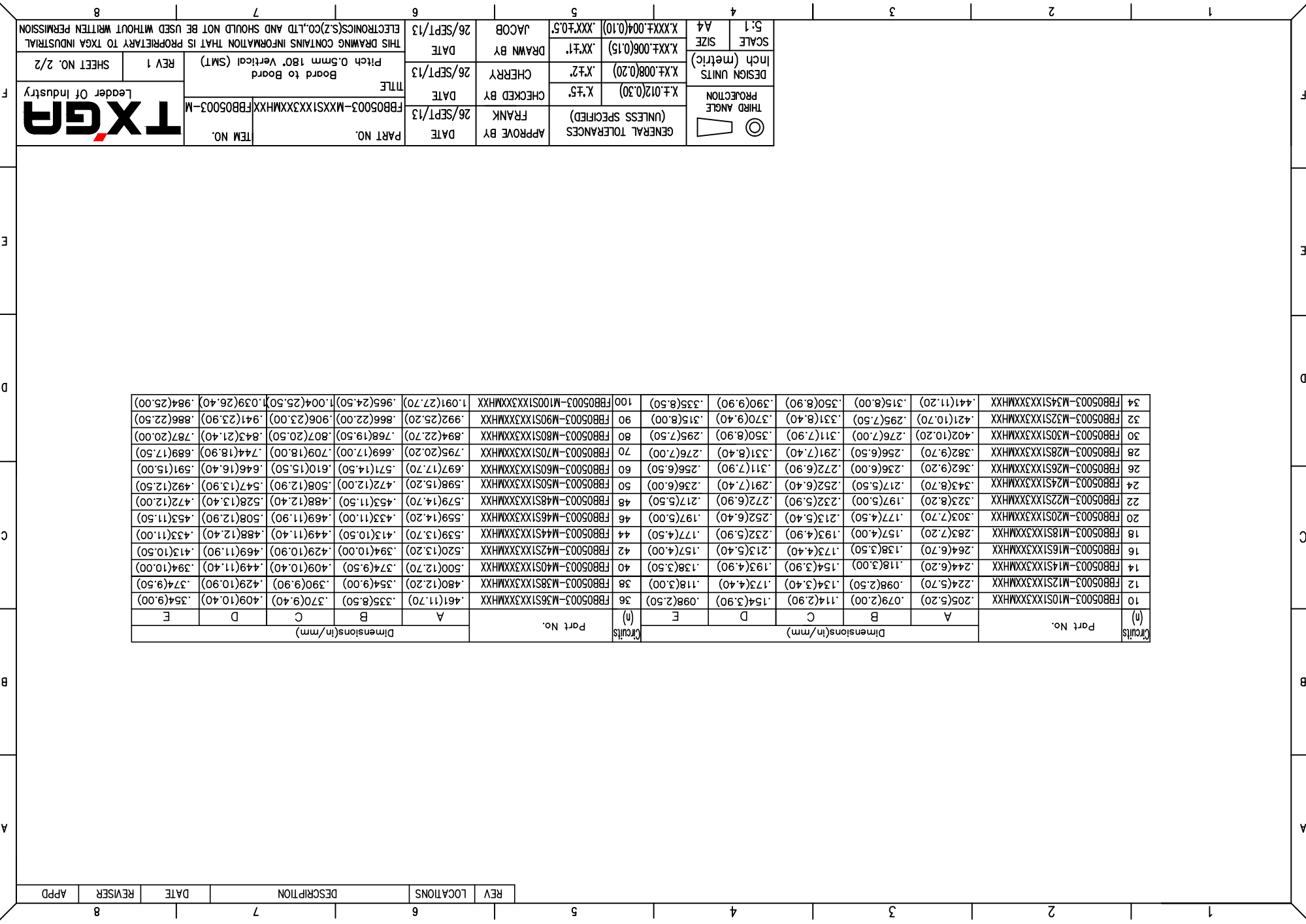
Circuits	Part No.	Dimensions(in/mm)				
		A	B	C	D	E
36	FB05003-M36S1XX3XXMHXX	.461(11.70)	.335(8.50)	.370(9.40)	.409(10.40)	.354(9.00)
38	FB05003-M38S1XX3XXMHXX	.480(12.20)	.354(9.00)	.390(9.90)	.429(10.90)	.374(9.50)
40	FB05003-M40S1XX3XXMHXX	.500(12.70)	.374(9.50)	.409(10.40)	.449(11.40)	.394(10.00)
42	FB05003-M42S1XX3XXMHXX	.520(13.20)	.394(10.00)	.429(10.90)	.469(11.90)	.413(10.50)
44	FB05003-M44S1XX3XXMHXX	.539(13.70)	.413(10.50)	.449(11.40)	.488(12.40)	.433(11.00)
46	FB05003-M46S1XX3XXMHXX	.559(14.20)	.433(11.00)	.469(11.90)	.508(12.90)	.453(11.50)
48	FB05003-M48S1XX3XXMHXX	.579(14.70)	.453(11.50)	.488(12.40)	.528(13.40)	.472(12.00)
50	FB05003-M50S1XX3XXMHXX	.598(15.20)	.472(12.00)	.508(12.90)	.547(13.90)	.492(12.50)
52	FB05003-M52S1XX3XXMHXX	.618(15.70)	.492(12.50)	.528(13.40)	.567(14.40)	.512(13.00)
54	FB05003-M54S1XX3XXMHXX	.637(16.20)	.512(13.00)	.547(13.90)	.587(14.90)	.532(13.50)
56	FB05003-M56S1XX3XXMHXX	.657(16.70)	.532(13.50)	.567(14.40)	.607(15.40)	.552(14.00)
58	FB05003-M58S1XX3XXMHXX	.676(17.20)	.552(14.00)	.587(14.90)	.627(15.90)	.572(14.50)
60	FB05003-M60S1XX3XXMHXX	.696(17.70)	.572(14.50)	.607(15.40)	.647(16.40)	.592(15.00)
62	FB05003-M62S1XX3XXMHXX	.715(18.20)	.592(15.00)	.627(15.90)	.667(16.90)	.612(15.50)
64	FB05003-M64S1XX3XXMHXX	.735(18.70)	.612(15.50)	.647(16.40)	.687(17.40)	.632(16.00)
66	FB05003-M66S1XX3XXMHXX	.754(19.20)	.632(16.00)	.667(16.90)	.707(17.90)	.652(16.50)
68	FB05003-M68S1XX3XXMHXX	.774(19.70)	.652(16.50)	.687(17.40)	.727(18.40)	.672(17.00)
70	FB05003-M70S1XX3XXMHXX	.793(20.20)	.672(17.00)	.707(17.90)	.747(18.90)	.692(17.50)
72	FB05003-M72S1XX3XXMHXX	.813(20.70)	.692(17.50)	.727(18.40)	.767(19.40)	.712(18.00)
74	FB05003-M74S1XX3XXMHXX	.832(21.20)	.712(18.00)	.747(18.90)	.787(19.90)	.732(18.50)
76	FB05003-M76S1XX3XXMHXX	.852(21.70)	.732(18.50)	.767(19.40)	.807(20.40)	.752(19.00)
78	FB05003-M78S1XX3XXMHXX	.871(22.20)	.752(19.00)	.787(19.90)	.827(20.90)	.772(19.50)
80	FB05003-M80S1XX3XXMHXX	.891(22.70)	.772(19.50)	.807(20.40)	.847(21.40)	.792(20.00)
82	FB05003-M82S1XX3XXMHXX	.910(23.20)	.792(20.00)	.827(20.90)	.867(21.90)	.812(20.50)
84	FB05003-M84S1XX3XXMHXX	.930(23.70)	.812(20.50)	.847(21.40)	.887(22.40)	.832(21.00)
86	FB05003-M86S1XX3XXMHXX	.949(24.20)	.832(21.00)	.867(21.90)	.907(22.90)	.852(21.50)
88	FB05003-M88S1XX3XXMHXX	.969(24.70)	.852(21.50)	.887(22.40)	.927(23.40)	.872(22.00)
90	FB05003-M90S1XX3XXMHXX	.988(25.20)	.872(22.00)	.907(22.90)	.947(23.90)	.892(22.50)
92	FB05003-M92S1XX3XXMHXX	.1.007(25.70)	.892(22.50)	.927(23.40)	.967(24.40)	.912(23.00)
94	FB05003-M94S1XX3XXMHXX	.1.027(26.20)	.912(23.00)	.947(23.90)	.987(24.90)	.932(23.50)
96	FB05003-M96S1XX3XXMHXX	.1.046(26.70)	.932(23.50)	.967(24.40)	.1.007(25.40)	.952(24.00)
98	FB05003-M98S1XX3XXMHXX	.1.066(27.20)	.952(24.00)	.987(24.90)	.1.027(25.90)	.972(24.50)
100	FB05003-M100S1XX3XXMHXX	.1.085(27.70)	.972(24.50)	.1.007(25.40)	.1.047(26.40)	.992(25.00)

DATE	26/SEPT/13	DATE	26/SEPT/13	DATE	26/SEPT/13
APPROVE BY	FANK	CHECKED BY	CERRY	DRAWN BY	JACOB
GENERAL TOLERANCES (UNLESS SPECIFIED)	X.±.012(0.30)	X.±.008(0.20)	X.±.006(0.15)	X.±.004(0.10)	X.±.003(0.075)
THIRD ANGLE					
DESIGN UNITS	Inch (metric)				
SCALE	A4				

THIS DRAWING CONTAINS INFORMATION THAT IS PROPRIETARY TO TXGA INDUSTRIAL ELECTRONICS(SZ)CO.,LTD AND SHOULD NOT BE USED WITHOUT WRITTEN PERMISSION

Leader Of Industry

PART NO.	FB05003-M	ITEM NO.	FB05003-M
DATE	26/SEPT/13	DATE	26/SEPT/13
CHECKED BY	CERRY	DRAWN BY	JACOB
DATE	26/SEPT/13	DATE	26/SEPT/13
Board to Board		Pitch 0.5mm 180° Vertical (SMT)	
REV 1	SHEET NO. 2/2		



## X-ON Electronics

Largest Supplier of Electrical and Electronic Components

*Click to view similar products for [Board to Board & Mezzanine Connectors](#) category:*

*Click to view products by [TXGA](#) manufacturer:*

Other Similar products are found below :

[10135583-642402LF](#) [89885-310LF](#) [589158040000018](#) [6-1393048-0](#) [68683-613](#) [MDF7-12DP-2.54DSA](#) [MDF7-18P-2.54DSA\(01\)](#) [MDF7-20DP-2.54DSA](#) [MDF7-26D-2.54DSA\(55\)](#) [MDF7-3P-2.54DSA\(01\)](#) [MDF7B-20P-2.54DSA\(01\)](#) [MDF7B-3P-2.54DSA\(55\)](#) [MDF7C-11P-2.54DSA\(55\)](#) [MDF7C-18P-2.54DSA\(55\)](#) [MDF7C-5P-2.54DSA\(01\)](#) [MDF7P-5P-2.54DSA\(55\)](#) [75234-0516](#) [FCN-230C068-11](#) [FCN-268F012-G/BD](#) [FCN-268F036-G/BD](#) [FCN-268M012-G/0D](#) [FCN-268M024-G/1D](#) [FCN-360C008-C](#) [FCN-360C040-C](#) [FCN-723J004/1](#) [MIS-048-01-F-D-DP-K](#) [832-10-034-10-001000](#) [93696-325LF](#) [11828-1FA](#) [AXK630345P](#) [18097-0013](#) [ICA-328STT](#) [2007042-2](#) [304400-2](#) [FCN-214Q030-G/0](#) [FCN-215Q040-G/0](#) [FCN-230C068-ESA](#) [FCN-234P048-G/0](#) [FCN-235D050-G/C](#) [FCN-360A3](#) [FCN-360C040-B](#) [210-93-314-41-105000](#) [2-22603-0](#) [379-064-521-202](#) [MDF7-12P-2.54DSA\(01\)](#) [MDF7-16P-2.54DS\(56\)](#) [MDF7-40DP-2.54DSA\(55\)](#) [MDF7-8P-2.54DSA\(55\)](#) [MDF7B-16P-2.54DSA\(55\)](#) [AXG720047](#)