

REV	LOCATIONS	DESCRIPTION	DATE	REVISER	APPD
1			12/JUN/17	JACOB	CHERRY
2		1. Size changes 2. Material-Resin change	12/MAY/21	KATE	CHERRY

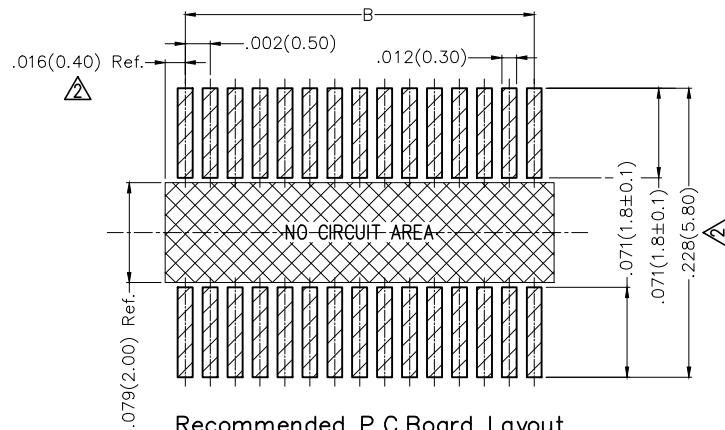
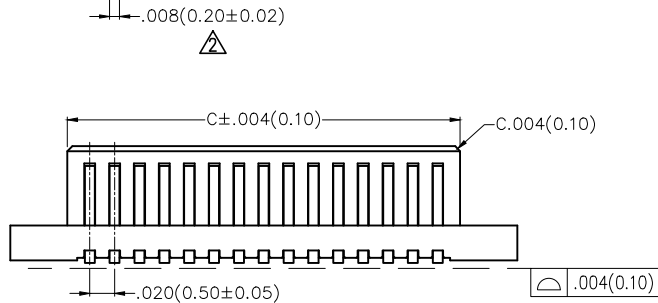
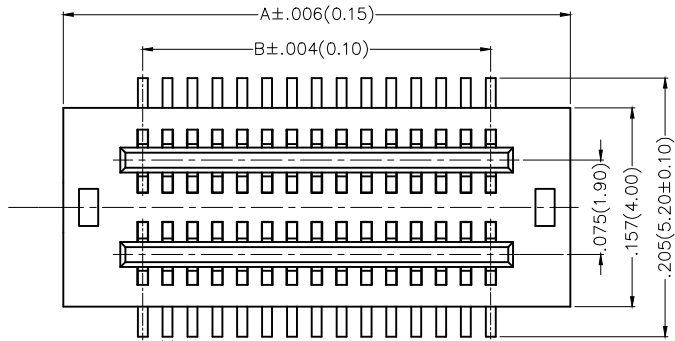
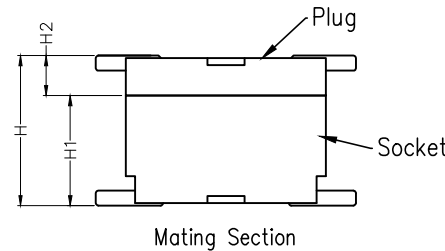
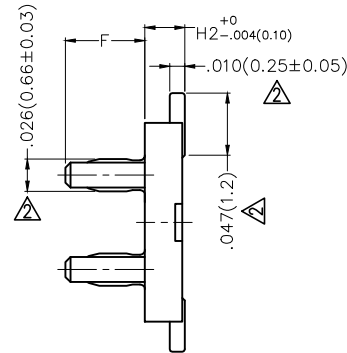
Electrical

Current Rating: 0.5A AC(rms)/DC
Voltage Rating: 50V AC(rms)/DC
Contact Resistance: 40 m Ω Max
Insulation Resistance: 100 M Ω MIN
Withstanding Voltage: 250V AC r.m.s
Temperature Range-Operating: -25°C ~ +85°C

Material and Plating

Housing: PA9T (UL 94V-0)
 Contact Pin: Phosphor Bronze
Plating: Gold Plated

Height H(in/mm)	Female H1(in/mm)	Male H2(in/mm)	F(in/mm)
.118(3.00)	.087(2.20)	.031(0.80)	.063(1.60)
.138(3.50)	.087(2.20)	.051(1.30)	.063(1.60)
.157(4.00)	.118(3.00)	.039(1.00)	.075(1.90)
.177(4.50)	.138(3.50)	.039(1.00)	.075(1.90)
.197(5.00)	.157(4.00)	.039(1.00)	.075(1.90)
.217(5.50)	.177(4.50)	.039(1.00)	.075(1.90)
.236(6.00)	.157(4.00)	.079(2.00)	.075(1.90)
.256(6.50)	.177(4.50)	.079(2.00)	.075(1.90)





Recommended P.C.Board Layout
General tolerances: ±.020(0.50)



Ordering Information

FBB 050 03 — M XX S 1 XX 3 K6 M HXX
1 2 3 4 5 6 7 8 9 10 11 12

1 <u>Category</u> FBB-Board To Board	2 <u>Series Number</u> 050-Pitch 0.5mm	3 <u>Distinction No.</u> 03	4 <u>Type</u> M-Male	5 <u>Circuits</u> XX	6 <u>Entry Angle</u> S-180° Vertical
7 <u>Plating</u> 1-Gold Plated	8 <u>Thickness of Plating</u> 00-Gold Flash 03-3μ"	9 <u>Material-Resin</u> 3-PA9T	10 <u>Color-Resin</u> K6-Black	11 <u>Packaging</u> M-Reel	12 <u>Male Height</u> H08-0.8mm H13-1.3mm

THIRD ANGLE PROJECTION		GENERAL TOLERANCES (UNLESS SPECIFIED)		APPROVE BY	DATE	PART NO.	TEM NO.		Leader Of Industry
DESIGN UNITS Inch (metric)	SCALE 5:1	X±.012(0.30)	X'±5'	FRANK	26/SEPT/13	FBB05003-MXXS1XX3K6MHXX	FBB05003-M		
	SIZE A4	X.X±.008(0.20)	.X'±2'	CHECKED BY CHERRY	DATE 26/SEPT/13	TITLE Board to Board Pitch 0.5mm 180° Vertical (SMT)		THIS DRAWING CONTAINS INFORMATION THAT IS PROPRIETARY TO TXGA INDUSTRIAL ELECTRONICS(S.Z)CO.,LTD AND SHOULD NOT BE USED WITHOUT WRITTEN PERMISSION	
		X.XX±.006(0.15)	.XX'±1'	DRAWN BY JACOB	DATE 26/SEPT/13				
		X.XXX±.004(0.10)	.XXX'±0.5'						

Circuits (n)	Part No.	Dimensions(in./mm)			Circuits (n)	Part No.	Dimensions(in./mm)		
		A	B	C 			A	B	C 
10	FBB05003-M10S1XX3K6MHXX	.205(5.20)	.079(2.00)	.118(3.00)	36	FBB05003-M36S1XX3K6MHXX	.461(11.70)	.335(8.50)	.374(9.50)
12	FBB05003-M12S1XX3K6MHXX	.224(5.70)	.098(2.50)	.138(3.50)	38	FBB05003-M38S1XX3K6MHXX	.480(12.20)	.354(9.00)	.394(10.00)
14	FBB05003-M14S1XX3K6MHXX	.244(6.20)	.118(3.00)	.157(4.00)	40	FBB05003-M40S1XX3K6MHXX	.500(12.70)	.374(9.50)	.413(10.50)
16	FBB05003-M16S1XX3K6MHXX	.264(6.70)	.138(3.50)	.177(4.50)	42	FBB05003-M42S1XX3K6MHXX	.520(13.20)	.394(10.00)	.433(11.00)
18	FBB05003-M18S1XX3K6MHXX	.283(7.20)	.157(4.00)	.197(5.00)	44	FBB05003-M44S1XX3K6MHXX	.539(13.70)	.413(10.50)	.453(11.50)
20	FBB05003-M20S1XX3K6MHXX	.303(7.70)	.177(4.50)	.217(5.50)	46	FBB05003-M46S1XX3K6MHXX	.559(14.20)	.433(11.00)	.472(12.00)
22	FBB05003-M22S1XX3K6MHXX	.323(8.20)	.197(5.00)	.236(6.00)	48	FBB05003-M48S1XX3K6MHXX	.579(14.70)	.453(11.50)	.492(12.50)
24	FBB05003-M24S1XX3K6MHXX	.343(8.70)	.217(5.50)	.256(6.50)	50	FBB05003-M50S1XX3K6MHXX	.598(15.20)	.472(12.00)	.512(13.00)
26	FBB05003-M26S1XX3K6MHXX	.362(9.20)	.236(6.00)	.276(7.00)	60	FBB05003-M60S1XX3K6MHXX	.697(17.70)	.571(14.50)	.610(15.50)
28	FBB05003-M28S1XX3K6MHXX	.382(9.70)	.256(6.50)	.295(7.50)	70	FBB05003-M70S1XX3K6MHXX	.795(20.20)	.669(17.00)	.709(18.00)
30	FBB05003-M30S1XX3K6MHXX	.402(10.20)	.276(7.00)	.315(8.00)	80	FBB05003-M80S1XX3K6MHXX	.894(22.70)	.768(19.50)	.807(20.50)
32	FBB05003-M32S1XX3K6MHXX	.421(10.70)	.295(7.50)	.335(8.50)	90	FBB05003-M90S1XX3K6MHXX	.992(25.20)	.866(22.00)	.906(23.00)
34	FBB05003-M34S1XX3K6MHXX	.441(11.20)	.315(8.00)	.354(9.00)	100	FBB05003-M100S1XX3K6MHXX	1.091(27.70)	.965(24.50)	1.004(25.50)

 THIRD ANGLE PROJECTION	GENERAL TOLERANCES (UNLESS SPECIFIED)		APPROVE BY FRANK	DATE 26/SEPT/13	PART NO. FBB05003-MXXS1XX3K6MHXX	TEM NO. FBB05003-M	 Leader Of Industry	
	X.±.012(0.30)	X.±5'	CHECKED BY CHERRY	DATE 26/SEPT/13	TITLE Board to Board Pitch 0.5mm 180° Vertical (SMT)	REV 2		SHEET NO. 2/2
	DESIGN UNITS Inch (metric)	X.X±.008(0.20)	.X'±2'	DRAWN BY JACOB	DATE 26/SEPT/13	THIS DRAWING CONTAINS INFORMATION THAT IS PROPRIETARY TO TXGA INDUSTRIAL ELECTRONICS(S.Z)CO.,LTD AND SHOULD NOT BE USED WITHOUT WRITTEN PERMISSION		
	SCALE 5:1	SIZE A4	X.XX±.006(0.15)	.XX'±1'				

X-ON Electronics

Largest Supplier of Electrical and Electronic Components

Click to view similar products for [Board to Board & Mezzanine Connectors](#) category:

Click to view products by [TXGA](#) manufacturer:

Other Similar products are found below :

[589158040000018](#) [MDF7C-18P-2.54DSA\(55\)](#) [FCN-268F036-G/BD](#) [FCN-268M012-G/0D](#) [FCN-268M024-G/1D](#) [FCN-723J004/1](#) [MIS-048-01-F-D-DP-K](#) [832-10-034-10-001000](#) [FX4C-80S-1.27DSA](#) [93696-330](#) [224393](#) [FCN-235D050-G/C](#) [210-93-314-41-105000](#) [2-22603-0](#) [MDF7-40DP-2.54DSA\(55\)](#) [5031084030](#) [MIT-114-03-F-D-K](#) [55323-1519](#) [45970-4130](#) [YFT-20-05-H-03-SB-K](#) [503308-3040](#) [026-6203-PDB](#) [027-6203-PDB](#) [069159702701000](#) [101A10019X](#) [105061100000861+](#) [55650-0588-C](#) [75140-7012](#) [87471-650](#) [YTW-30-07-H-Q-410-140](#) [YTT-112-01-H-Q](#) [063209](#) [0717420006](#) [FCN-268F024-G0D](#) [10124054-515LF](#) [68685-603](#) [8-1616154-3](#) [MIS-019-01-F-D](#) [YTQ-11201HQ](#) [IL-WX-10PB-HF-B-E1000E](#) [YFT-50-05-H-10-SB-K](#) [FCN-268M024-G/3D](#) [MDF7-16DP-2.54DSA\(55\)](#) [AXE810124](#) [FCN-214J100-G/0](#) [FCN-230C068-E/S](#) [AXE812124](#) [74220-001](#) [354184](#) [P50-028-DDS-TG](#)