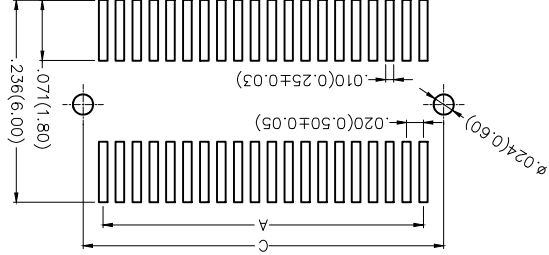
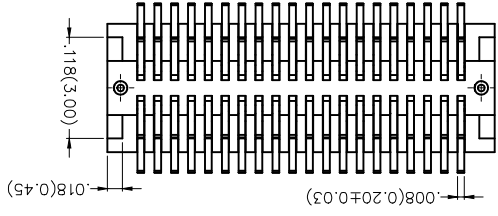
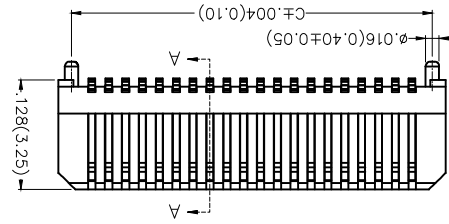
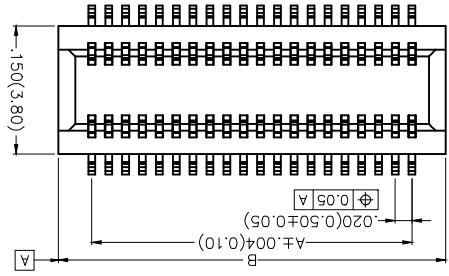
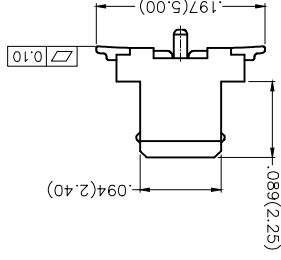
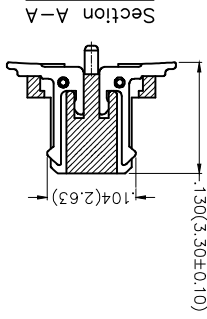
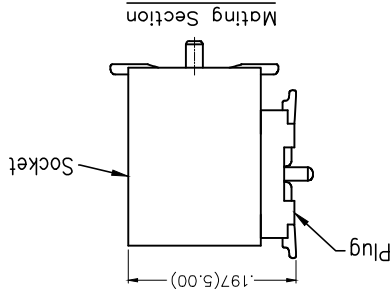


REV	LOCATIONS	DESCRIPTION	DATE	REVISER	APPD

**SPECIFICATIONS**

**Electrical**  
 Current Rating: 0.5A AC(rms)/DC  
 Voltage Rating: 60V AC(rms)/DC  
 Contact Resistance: 60 mΩ Max.  
 Insulation Resistance: 800 MΩ Min.  
 Withstanding Voltage: 500V AC r.m.s  
 Temperature Range—Operating: -25°C~+85°C  
**Material and Plating**  
 Housing: PA9T (UL 94V-0)  
 Contacts: Phosphor Bronze/ Gold Plated



General Tolerances: ±0.05mm  
 Recommended P.C.Board Layout

1	Category	FBB-Board to Board
2	Series Number	050-Pitch0.50mm
3	Distinction No.	06
4	Type	M-Male
5	Circuits	XX
6	Entry Angle	S-180° Vertical
7	Plating	1-Gold Plated
8	Thickness of Plating	00-Gold Flash
9	Material-Resin	5-PA9T
10	Color-Resin	W5-Natural
11	Packaging	M-Reel

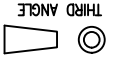
Ordering Information  
 FBB 050 06 - M XX S 1 XX S 1 XX S 1 XX S 1 XX S 1 XX M

GENERAL TOLERANCES (UNLESS SPECIFIED)	APPROVE BY	FRANK	DATE	22/FEB/17
	CHECKED BY	X.F.S	DATE	22/FEB/17
THIRD ANGLE PROJECTION	DESIGN UNITS	X.X±.008(0.20)	X.X±.2	CHEERY
	INCH (metric)	X.X±.006(0.15)	X.X±.1	DRAWN BY
	SCALE	X.XX±.004(0.10)	X.XX±0.5	KATE
	SIZE	A4	5:1	DATE
	DATE	22/FEB/17	22/FEB/17	22/FEB/17

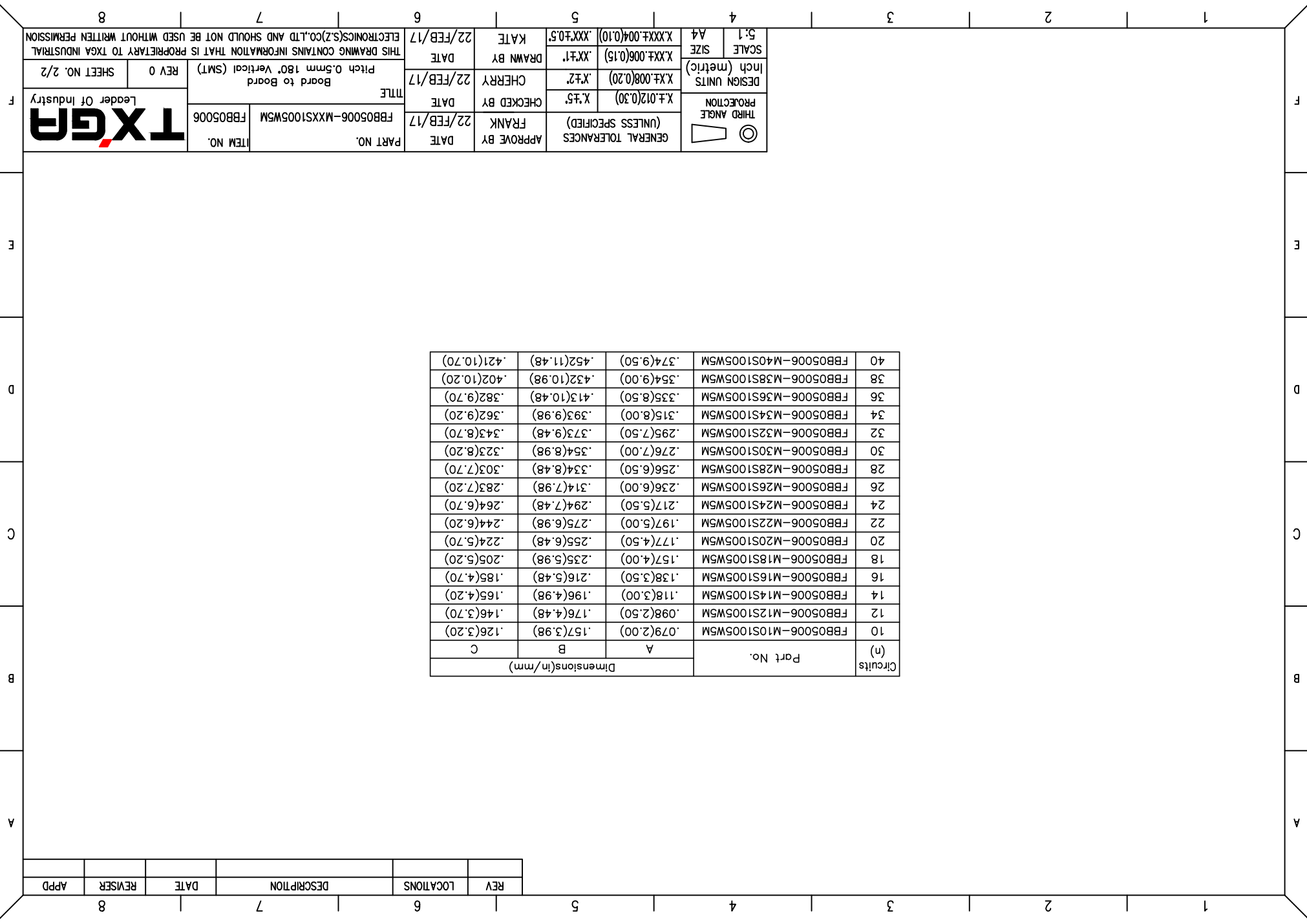
PART NO. FBB05006-MXXS1005WM  
 ITEM NO. FBB05006  
 TITLE Board to Board Pitch 0.5mm 180° Vertical (SMT)  
 Board to Board  
 REV 0 SHEET NO. 1/2  
 THIS DRAWING CONTAINS INFORMATION THAT IS PROPRIETARY TO TXGA INDUSTRIAL ELECTRONICS(Z)CO.,LTD AND SHOULD NOT BE USED WITHOUT WRITTEN PERMISSION  
 Leader Of Industry  
**TXGA**

APPD	REVISER	DATE	DESCRIPTION	LOCATIONS	REV
------	---------	------	-------------	-----------	-----

Circuits (n)	Part No.	Dimensions(In/mm)		
		A	B	C
10	FBB05006-M10S1005W5M	.079(2.00)	.157(3.98)	.126(3.20)
12	FBB05006-M12S1005W5M	.098(2.50)	.176(4.48)	.146(3.70)
14	FBB05006-M14S1005W5M	.118(3.00)	.196(4.98)	.165(4.20)
16	FBB05006-M16S1005W5M	.138(3.50)	.216(5.48)	.185(4.70)
18	FBB05006-M18S1005W5M	.157(4.00)	.235(5.98)	.205(5.20)
20	FBB05006-M20S1005W5M	.177(4.50)	.255(6.48)	.224(5.70)
22	FBB05006-M22S1005W5M	.197(5.00)	.275(6.98)	.244(6.20)
24	FBB05006-M24S1005W5M	.217(5.50)	.294(7.48)	.264(6.70)
26	FBB05006-M26S1005W5M	.236(6.00)	.314(7.98)	.283(7.20)
28	FBB05006-M28S1005W5M	.256(6.50)	.334(8.48)	.303(7.70)
30	FBB05006-M30S1005W5M	.276(7.00)	.354(8.98)	.323(8.20)
32	FBB05006-M32S1005W5M	.295(7.50)	.373(9.48)	.343(8.70)
34	FBB05006-M34S1005W5M	.315(8.00)	.393(9.98)	.362(9.20)
36	FBB05006-M36S1005W5M	.335(8.50)	.413(10.48)	.382(9.70)
38	FBB05006-M38S1005W5M	.354(9.00)	.432(10.98)	.402(10.20)
40	FBB05006-M40S1005W5M	.374(9.50)	.452(11.48)	.421(10.70)

 THIRD ANGLE PROJECTION	DESIGN UNITS Inch (metric)	X.XX(0.00) X.XX(0.20) X.XX(0.00) X.XX(0.15)	X.XX(0.00) X.XX(0.10) X.XX(0.00) X.XX(0.05)	SCALE SIZE 5:1 A4
	GENERAL TOLERANCES (UNLESS SPECIFIED)	X.XX(0.00) X.XX(0.10)	X.XX(0.00) X.XX(0.15)	X.XX(0.00) X.XX(0.10)
APPROVE BY FRANK	CHECKED BY CHERRY	DRAWN BY KATE	DATE 22/FEB/17	PART NO. FBB05006-MXXS1005W5M
DATE 22/FEB/17	TITLE Board to Board Pitch 0.5mm 180° Vertical (SMT)	REV 0	SHEET NO. 2/2	ITEM NO. FBB05006

THIS DRAWING CONTAINS INFORMATION THAT IS PROPRIETARY TO TXGA INDUSTRIAL ELECTRONICS(SZ)CO.,LTD AND SHOULD NOT BE USED WITHOUT WRITTEN PERMISSION



## X-ON Electronics

Largest Supplier of Electrical and Electronic Components

*Click to view similar products for [Board to Board & Mezzanine Connectors](#) category:*

*Click to view products by [TXGA](#) manufacturer:*

Other Similar products are found below :

[10135583-642402LF](#) [89885-310LF](#) [589158040000018](#) [6-1393048-0](#) [68683-613](#) [MDF7-12DP-2.54DSA](#) [MDF7-18P-2.54DSA\(01\)](#) [MDF7-20DP-2.54DSA](#) [MDF7-26D-2.54DSA\(55\)](#) [MDF7-3P-2.54DSA\(01\)](#) [MDF7B-20P-2.54DSA\(01\)](#) [MDF7B-3P-2.54DSA\(55\)](#) [MDF7C-11P-2.54DSA\(55\)](#) [MDF7C-18P-2.54DSA\(55\)](#) [MDF7C-5P-2.54DSA\(01\)](#) [MDF7P-5P-2.54DSA\(55\)](#) [75234-0516](#) [FCN-230C068-11](#) [FCN-268F012-G/BD](#) [FCN-268F036-G/BD](#) [FCN-268M012-G/0D](#) [FCN-268M024-G/1D](#) [FCN-360C008-C](#) [FCN-360C040-C](#) [FCN-723J004/1](#) [MIS-048-01-F-D-DP-K](#) [832-10-034-10-001000](#) [93696-325LF](#) [11828-1FA](#) [AXK630345P](#) [18097-0013](#) [ICA-328STT](#) [2007042-2](#) [304400-2](#) [FCN-214Q030-G/0](#) [FCN-215Q040-G/0](#) [FCN-230C068-ESA](#) [FCN-234P048-G/0](#) [FCN-235D050-G/C](#) [FCN-360A3](#) [FCN-360C040-B](#) [210-93-314-41-105000](#) [2-22603-0](#) [379-064-521-202](#) [MDF7-12P-2.54DSA\(01\)](#) [MDF7-16P-2.54DS\(56\)](#) [MDF7-40DP-2.54DSA\(55\)](#) [MDF7-8P-2.54DSA\(55\)](#) [MDF7B-16P-2.54DSA\(55\)](#) [AXG720047](#)