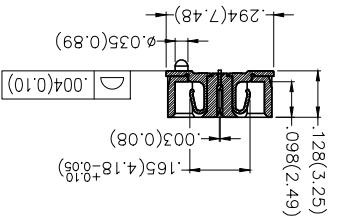


| REV | LOCATIONS | DESCRIPTION | DATE | REVISER | APPD |
|-----|-----------|-------------|------|---------|------|
|     |           |             |      |         |      |

**SPECIFICATIONS**

Electrical  
 Current Rating: 0.5A AC(rms)/DC  
 Voltage Rating: 50V AC(rms)/DC  
 Contact Resistance: 50 mΩ Max.  
 Insulation Resistance: 100 MΩ Min.  
 Withstanding Voltage: 200V AC r.m.s  
 Temperature Range—Operating: -35°C~+85°C  
 Material and Plating  
 Housing: LCP (UL 94V-0) Black  
 Contacts: Phosphor Bronze/ Selective gold in contact area, matte tin on tail



| Circuits (n) | Part No.              | Dimensions(in/mm) |              |              |
|--------------|-----------------------|-------------------|--------------|--------------|
|              |                       | A                 | B            | C            |
| 120          | FBB05007-F120S3XX3K6M | 1.629(41.38)      | 1.580(40.13) | 1.582(40.18) |
| 60           | FBB05007-F60S3XX3K6M  | .842(21.38)       | .793(20.13)  | .794(20.18)  |

**Ordering Information**

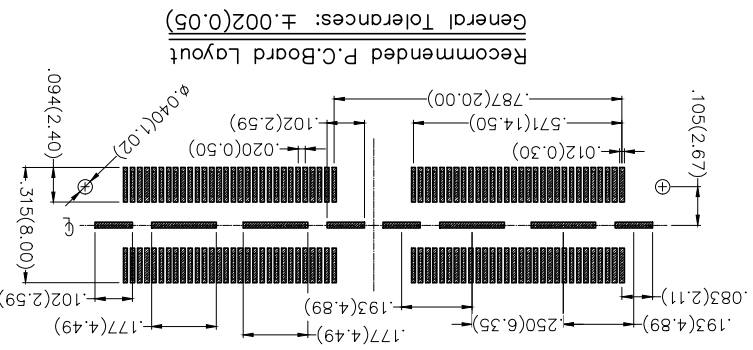
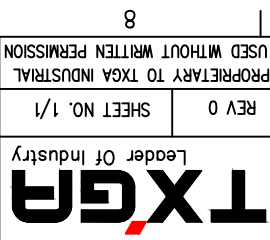
1 FBB 2 050 3 07 - 4 F 5 XX 6 S 7 3 8 XX 9 3 10 K6 11 M

- 1 Category
- 2 Series Number
- 3 Distinction No.
- 4 Type
- 5 Circuits
- 6 Entry Angle
- 7 Plating
- 8 Thickness of Plating
- 9 Material—Resin
- 10 Color—Resin
- 11 Packaging

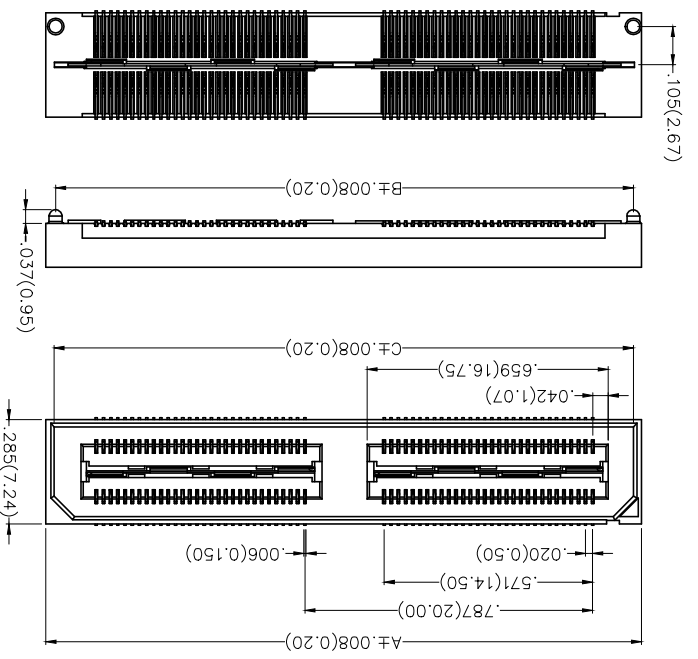
- 1 FBB—Board to Board
- 2 Series Number
- 3 Distinction No.
- 4 Type
- 5 Circuits
- 6 Entry Angle
- 7 Plating
- 8 Thickness of Plating
- 9 Material—Resin
- 10 Color—Resin
- 11 Packaging

| GENERAL TOLERANCES (UNLESS SPECIFIED) | APPROVE BY | DATE      | PART NO.                                       | ITEM NO. |
|---------------------------------------|------------|-----------|--|----------|
| THIRD ANGLE PROJECTION                | FRANK      | 21/DEC/18 | FBB05007-FXXS3XX3K6M                           | FBB05007 |
| X.±.012(0.30)                         | CHECKED BY | DATE      | TITLE  |          |
| X.XX±.006(0.15)                       | CHERRY     | 21/DEC/18 | Board to Board                                 |          |
| X.XX±.004(0.10)                       | DRAWN BY   | DATE      | Board to Board Pitch 0.5mm 180° Vertical (SMT) |          |
| SCALE 5:1                             | KATE       | 21/DEC/18 |  |          |
| SIZE A4                               |            |           |  |          |

THIS DRAWING CONTAINS INFORMATION THAT IS PROPRIETARY TO TXGA INDUSTRIAL ELECTRONICS(SZ)CO.,LTD AND SHOULD NOT BE USED WITHOUT WRITTEN PERMISSION



Recommended P.C.Board Layout  
 General Tolerances: ±.002(0.05)



## X-ON Electronics

Largest Supplier of Electrical and Electronic Components

*Click to view similar products for [Board to Board & Mezzanine Connectors](#) category:*

*Click to view products by [TXGA](#) manufacturer:*

Other Similar products are found below :

[10135583-642402LF](#) [89885-310LF](#) [589158040000018](#) [6-1393048-0](#) [68683-613](#) [MDF7-12DP-2.54DSA](#) [MDF7-18P-2.54DSA\(01\)](#) [MDF7-20DP-2.54DSA](#) [MDF7-26D-2.54DSA\(55\)](#) [MDF7-3P-2.54DSA\(01\)](#) [MDF7B-20P-2.54DSA\(01\)](#) [MDF7B-3P-2.54DSA\(55\)](#) [MDF7C-11P-2.54DSA\(55\)](#) [MDF7C-18P-2.54DSA\(55\)](#) [MDF7C-5P-2.54DSA\(01\)](#) [MDF7P-5P-2.54DSA\(55\)](#) [75234-0516](#) [FCN-230C068-11](#) [FCN-268F012-G/BD](#) [FCN-268F036-G/BD](#) [FCN-268M012-G/0D](#) [FCN-268M024-G/1D](#) [FCN-360C008-C](#) [FCN-360C040-C](#) [FCN-723J004/1](#) [MIS-048-01-F-D-DP-K](#) [832-10-034-10-001000](#) [93696-325LF](#) [11828-1FA](#) [AXK630345P](#) [18097-0013](#) [ICA-328STT](#) [2007042-2](#) [304400-2](#) [FCN-214Q030-G/0](#) [FCN-215Q040-G/0](#) [FCN-230C068-ESA](#) [FCN-234P048-G/0](#) [FCN-235D050-G/C](#) [FCN-360A3](#) [FCN-360C040-B](#) [210-93-314-41-105000](#) [2-22603-0](#) [379-064-521-202](#) [MDF7-12P-2.54DSA\(01\)](#) [MDF7-16P-2.54DS\(56\)](#) [MDF7-40DP-2.54DSA\(55\)](#) [MDF7-8P-2.54DSA\(55\)](#) [MDF7B-16P-2.54DSA\(55\)](#) [AXG720047](#)