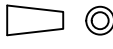
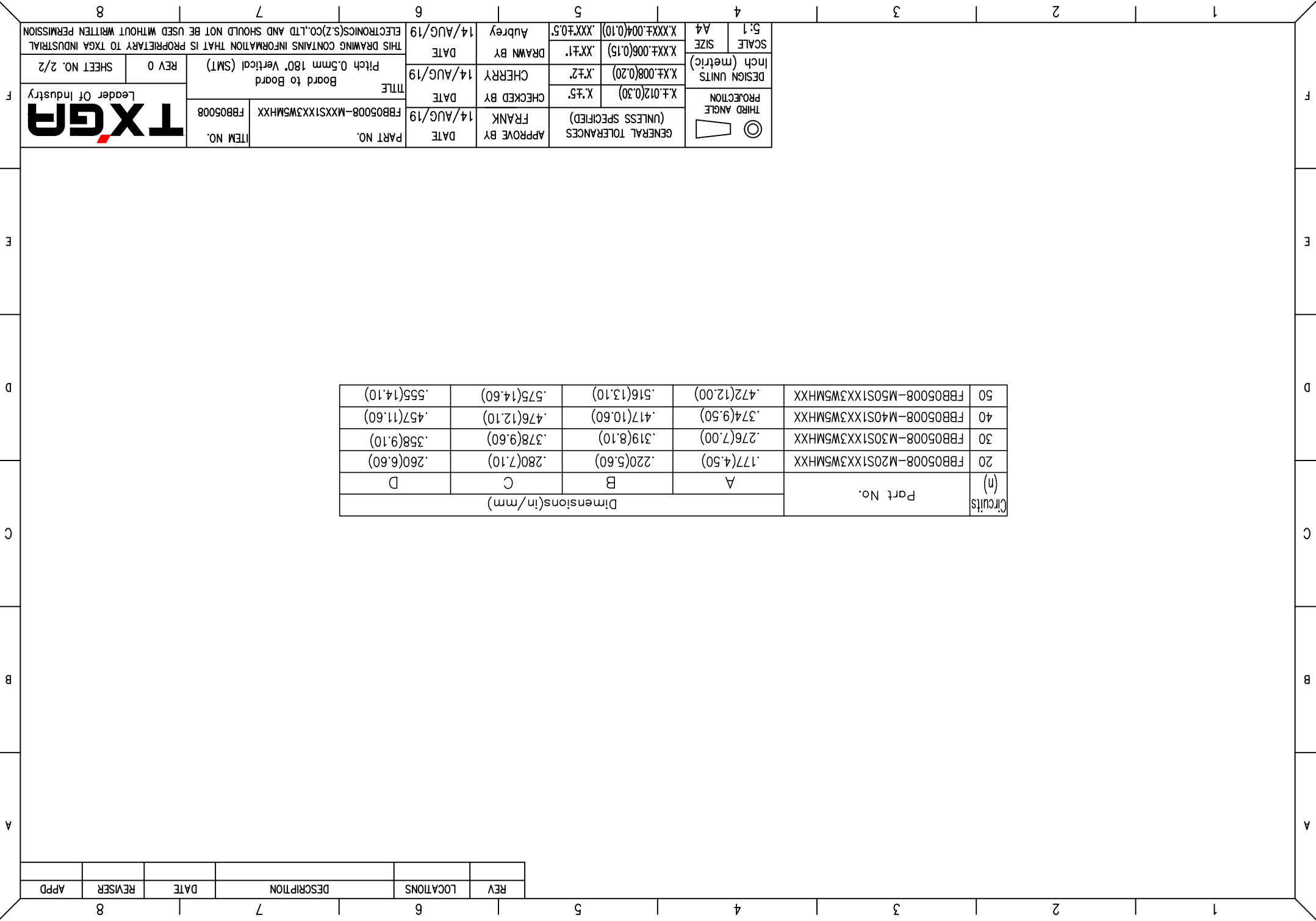


APPD	REVISER	DATE	DESCRIPTION	LOCATIONS	REV

Circuits (n)	Part No.	Dimensions(in/mm)			
		A	B	C	D
20	FBB05008-M20S1XX3W5MHXX	.177(4.50)	.220(5.60)	.280(7.10)	.260(6.60)
30	FBB05008-M30S1XX3W5MHXX	.276(7.00)	.319(8.10)	.378(9.60)	.358(9.10)
40	FBB05008-M40S1XX3W5MHXX	.374(9.50)	.417(10.60)	.476(12.10)	.457(11.60)
50	FBB05008-M50S1XX3W5MHXX	.472(12.00)	.516(13.10)	.575(14.60)	.555(14.10)

THIRD ANGLE 	PROJECTION	X.F.012(0.30)	X.F.5	APPROVE BY FRANK	DATE 14/AUG/19	PART NO. FBB05008-MXXS1XX3W5MHXX	ITEM NO. FBB05008
	DESIGN UNITS Inch (metric)	X.X±.008(0.20)	.X.F.2	CHECKED BY CHERRY	DATE 14/AUG/19	TITLE Board to Board Pitch 0.5mm 180° Vertical (SMT)	REV 0
SCALE 5:1	SIZE A4	X.XX±.006(0.15)	.XX.F.1	DRAWN BY Aubrey	DATE 14/AUG/19	THIS DRAWING CONTAINS INFORMATION THAT IS PROPRIETARY TO TXGA INDUSTRIAL ELECTRONICS(SZ)CO.,LTD AND SHOULD NOT BE USED WITHOUT WRITTEN PERMISSION	
		X.XX±.004(0.10)	.XX.F.0.5			SHEET NO. 2/2	



1 2 3 4 5 6 7 8

1 2 3 4 5 6 7 8

A B C D E F

A B C D E F

X-ON Electronics

Largest Supplier of Electrical and Electronic Components

Click to view similar products for [Board to Board & Mezzanine Connectors](#) category:

Click to view products by [TXGA](#) manufacturer:

Other Similar products are found below :

[10135583-642402LF](#) [89885-310LF](#) [589158040000018](#) [6-1393048-0](#) [68683-613](#) [MDF7-12DP-2.54DSA](#) [MDF7-18P-2.54DSA\(01\)](#) [MDF7-20DP-2.54DSA](#) [MDF7-26D-2.54DSA\(55\)](#) [MDF7-3P-2.54DSA\(01\)](#) [MDF7B-20P-2.54DSA\(01\)](#) [MDF7B-3P-2.54DSA\(55\)](#) [MDF7C-11P-2.54DSA\(55\)](#) [MDF7C-18P-2.54DSA\(55\)](#) [MDF7C-5P-2.54DSA\(01\)](#) [MDF7P-5P-2.54DSA\(55\)](#) [75234-0516](#) [FCN-230C068-11](#) [FCN-268F012-G/BD](#) [FCN-268F036-G/BD](#) [FCN-268M012-G/0D](#) [FCN-268M024-G/1D](#) [FCN-360C008-C](#) [FCN-360C040-C](#) [FCN-723J004/1](#) [MIS-048-01-F-D-DP-K](#) [832-10-034-10-001000](#) [93696-325LF](#) [11828-1FA](#) [AXK630345P](#) [18097-0013](#) [ICA-328STT](#) [2007042-2](#) [304400-2](#) [FCN-214Q030-G/0](#) [FCN-215Q040-G/0](#) [FCN-230C068-ESA](#) [FCN-234P048-G/0](#) [FCN-235D050-G/C](#) [FCN-360A3](#) [FCN-360C040-B](#) [210-93-314-41-105000](#) [2-22603-0](#) [379-064-521-202](#) [MDF7-12P-2.54DSA\(01\)](#) [MDF7-16P-2.54DS\(56\)](#) [MDF7-40DP-2.54DSA\(55\)](#) [MDF7-8P-2.54DSA\(55\)](#) [MDF7B-16P-2.54DSA\(55\)](#) [AXG720047](#)