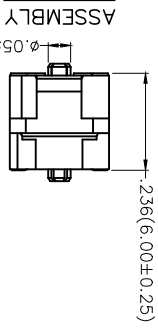


REV	LOCATIONS	DESCRIPTION	DATE	REVISER	APPD
1		1. Add dimensions 2. Structure change	03/JUN/20	KATE	CERRY

SPECIFICATIONS

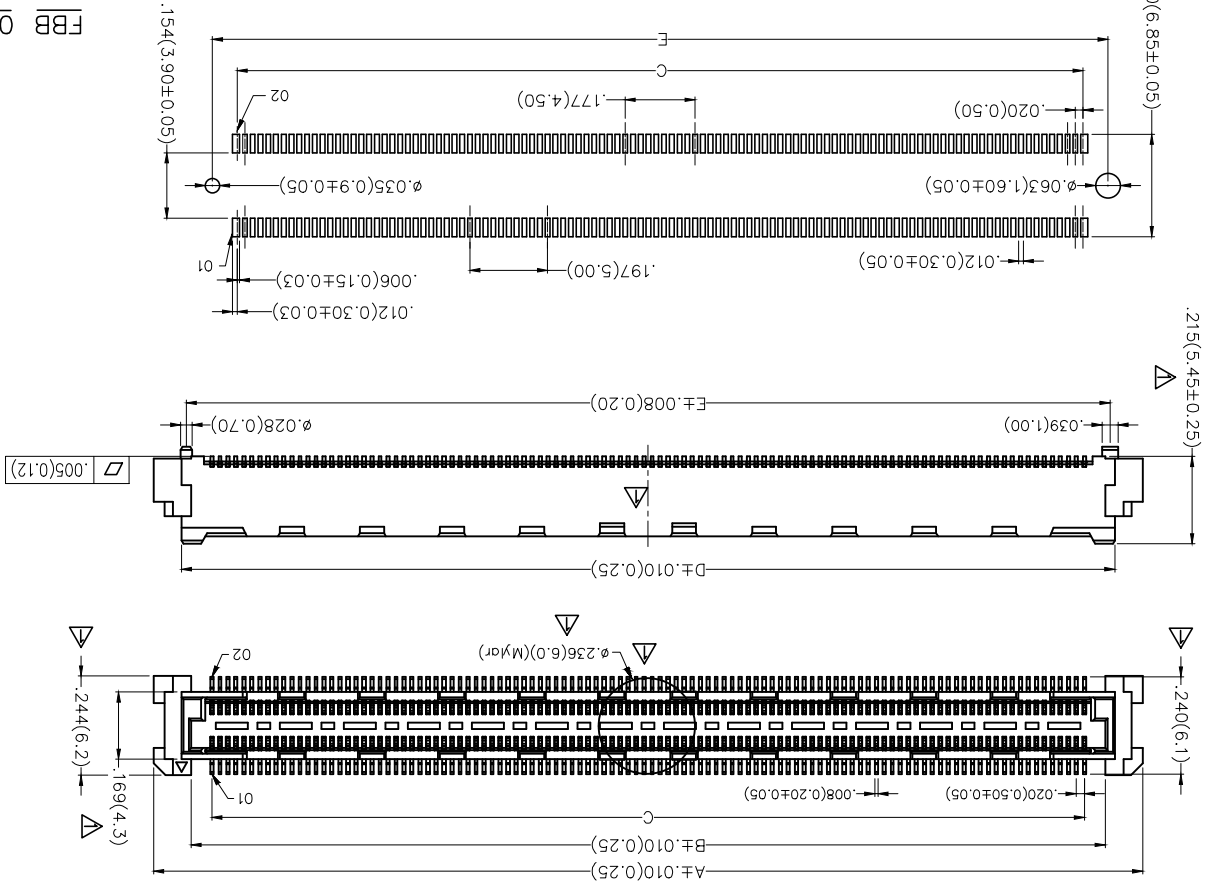
Electrical
 Current Rating: 0.5A AC(rms)/DC
 Voltage Rating: 50V AC(rms)/DC
 Contact Resistance: 55 mΩ Max.
 Insulation Resistance: 100 MΩ Min.
 Withstanding Voltage: 200V AC r.m.s
 Temperature Range—Operating: -40°C~+85°C
 Material and Plating
 Housing: LCP (UL 94V-0) Black
 Contacts: Phosphor Bronze/ Selective gold in
 contact area, tin on tail



Ordering Information

FBB 050 09 — F XXX S 3 XX 3 K6 M
 1 2 3 4 5 6 7 8 9 10 11

- 1 Category
- 2 Series Number
- 3 Distinction No.
- 4 Type
- 5 Circuits
- 6 Entry Angle
- 7 Plating
- 8 Thickness of Plating
- 9 Material—Resin
- 10 Color—Resin
- 11 M—Reel Packaging



Recommended P.C.Board Layout
 General Tolerances: ±.002(0.05)

THIRD ANGLE PROJECTION	DESIGN UNITS	SCALE	SIZE	A4
	X.±.012(0.30) X.X±.008(0.20) X.XX±.006(0.15) X.XXX±.004(0.10)	Inch (metric)	X.X±.008(0.20) X.XX±.006(0.15) X.XXX±.004(0.10)	5:1
GENERAL TOLERANCES (UNLESS SPECIFIED)	APPROVE BY	DATE	PART NO.	ITEM NO.
	FRANK	19/AUG/19	FB05009-FXXXS3XX3K6M	FB05009
THICKNESS OF PLATING	CHECKED BY	DATE	TITLE	BOARD TO BOARD
3-Selective gold in contact area, tin on tail 01-1" 03-3" Custom plate available	CERRY	19/AUG/19	Board to Board	Pitch 0.5mm 180° Vertical (SMT)
CATEGORY	SERIES NUMBER	DISTINCTION NO.	TYPE	CIRCUITS
FBB-Board to Board	050-Pitch0.50mm	09	F--Female	XXX
PLATING	THICKNESS OF PLATING	MATERIAL-RESIN	COLOR-RESIN	M-REEL PACKAGING
7	8	9	10	11

APPROVE BY	DATE	PART NO.	ITEM NO.
FRANK	19/AUG/19	FB05009-FXXXS3XX3K6M	FB05009
DRAWN BY	DATE	DATE	DATE
Aubrey	19/AUG/19	19/AUG/19	19/AUG/19

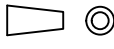
THIS DRAWING CONTAINS INFORMATION THAT IS PROPRIETARY TO TXGA INDUSTRIAL ELECTRONICS(SZ)CO.,LTD AND SHOULD NOT BE USED WITHOUT WRITTEN PERMISSION

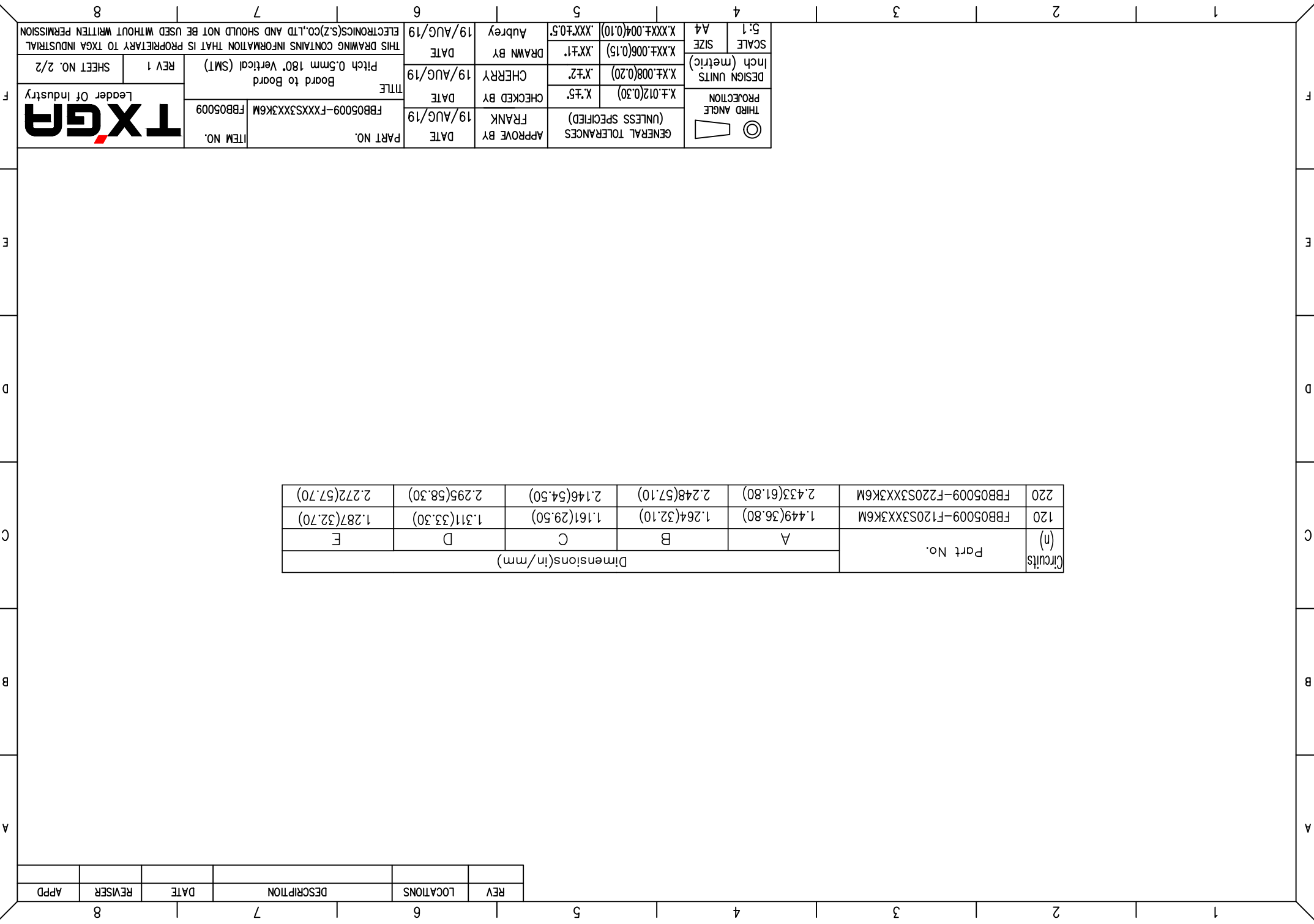


SHEET NO. 1/2

APPD	REVISER	DATE	DESCRIPTION	LOCATIONS	REV

Circuits (n)	Part No.	Dimensions(in/mm)				
		A	B	C	D	E
120	FBB05009-F120S3XX3K6M	1.449(36.80)	1.264(32.10)	1.161(29.50)	1.311(33.30)	1.287(32.70)
220	FBB05009-F220S3XX3K6M	2.433(61.80)	2.248(57.10)	2.146(54.50)	2.295(58.30)	2.272(57.70)

THIRD ANGLE PROJECTION 	DESIGN UNITS	X.±.012(0.30)	X.±.5.	APPROVE BY	FRANK	DATE	19/AUG/19	PART NO.	FBB05009-FXXXS3XX3K6M	ITEM NO.	FBB05009
	Inch (metric)	X.±.008(0.20)	X.±.2.	CHECKED BY	CHEERRY	DATE	19/AUG/19	TITLE	Board to Board Pitch 0.5mm 180° Vertical (SMT)	REV 1	SHEET NO. 2/2
SCALE	SIZE	X.XX±.006(0.15)	.XX±1.	DRAWN BY	Aubrey	DATE	19/AUG/19	THIS DRAWING CONTAINS INFORMATION THAT IS PROPRIETARY TO TXGA INDUSTRIAL ELECTRONICS(SZ)CO.,LTD AND SHOULD NOT BE USED WITHOUT WRITTEN PERMISSION			
5:1	A4	X.XX±.004(0.10)	.XX±0.5.								



X-ON Electronics

Largest Supplier of Electrical and Electronic Components

Click to view similar products for [Board to Board & Mezzanine Connectors](#) category:

Click to view products by [TXGA](#) manufacturer:

Other Similar products are found below :

[10135583-642402LF](#) [89885-310LF](#) [589158040000018](#) [6-1393048-0](#) [68683-613](#) [MDF7-12DP-2.54DSA](#) [MDF7-18P-2.54DSA\(01\)](#) [MDF7-20DP-2.54DSA](#) [MDF7-26D-2.54DSA\(55\)](#) [MDF7-3P-2.54DSA\(01\)](#) [MDF7B-20P-2.54DSA\(01\)](#) [MDF7B-3P-2.54DSA\(55\)](#) [MDF7C-11P-2.54DSA\(55\)](#) [MDF7C-18P-2.54DSA\(55\)](#) [MDF7C-5P-2.54DSA\(01\)](#) [MDF7P-5P-2.54DSA\(55\)](#) [75234-0516](#) [FCN-230C068-11](#) [FCN-268F012-G/BD](#) [FCN-268F036-G/BD](#) [FCN-268M012-G/0D](#) [FCN-268M024-G/1D](#) [FCN-360C008-C](#) [FCN-360C040-C](#) [FCN-723J004/1](#) [MIS-048-01-F-D-DP-K](#) [832-10-034-10-001000](#) [93696-325LF](#) [11828-1FA](#) [AXK630345P](#) [18097-0013](#) [ICA-328STT](#) [2007042-2](#) [304400-2](#) [FCN-214Q030-G/0](#) [FCN-215Q040-G/0](#) [FCN-230C068-ESA](#) [FCN-234P048-G/0](#) [FCN-235D050-G/C](#) [FCN-360A3](#) [FCN-360C040-B](#) [210-93-314-41-105000](#) [2-22603-0](#) [379-064-521-202](#) [MDF7-12P-2.54DSA\(01\)](#) [MDF7-16P-2.54DS\(56\)](#) [MDF7-40DP-2.54DSA\(55\)](#) [MDF7-8P-2.54DSA\(55\)](#) [MDF7B-16P-2.54DSA\(55\)](#) [AXG720047](#)