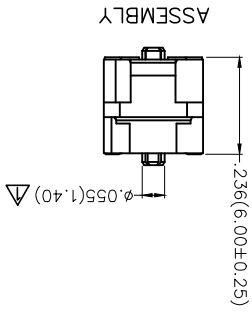


REV	LOCATIONS	DESCRIPTION	DATE	REVISER	APPD
1	▽	1. Add dimensions 2. Structure change	03/JUN/20	KATE	CHERRY

SPECIFICATIONS

Electrical
 Current Rating: 0.5A AC(rms)/DC
 Voltage Rating: 50V AC(rms)/DC
 Contact Resistance: 55 mΩ Max.
 Insulation Resistance: 100 MΩ Min.
 Withstanding Voltage: 200V AC r.m.s
 Temperature Range—Operating: -40°C~+85°C
 Material and Plating
 Housing: LCP (UL 94V-0) Black
 Contacts: Phosphor Bronze/ Selective gold in contact area, tin on tail

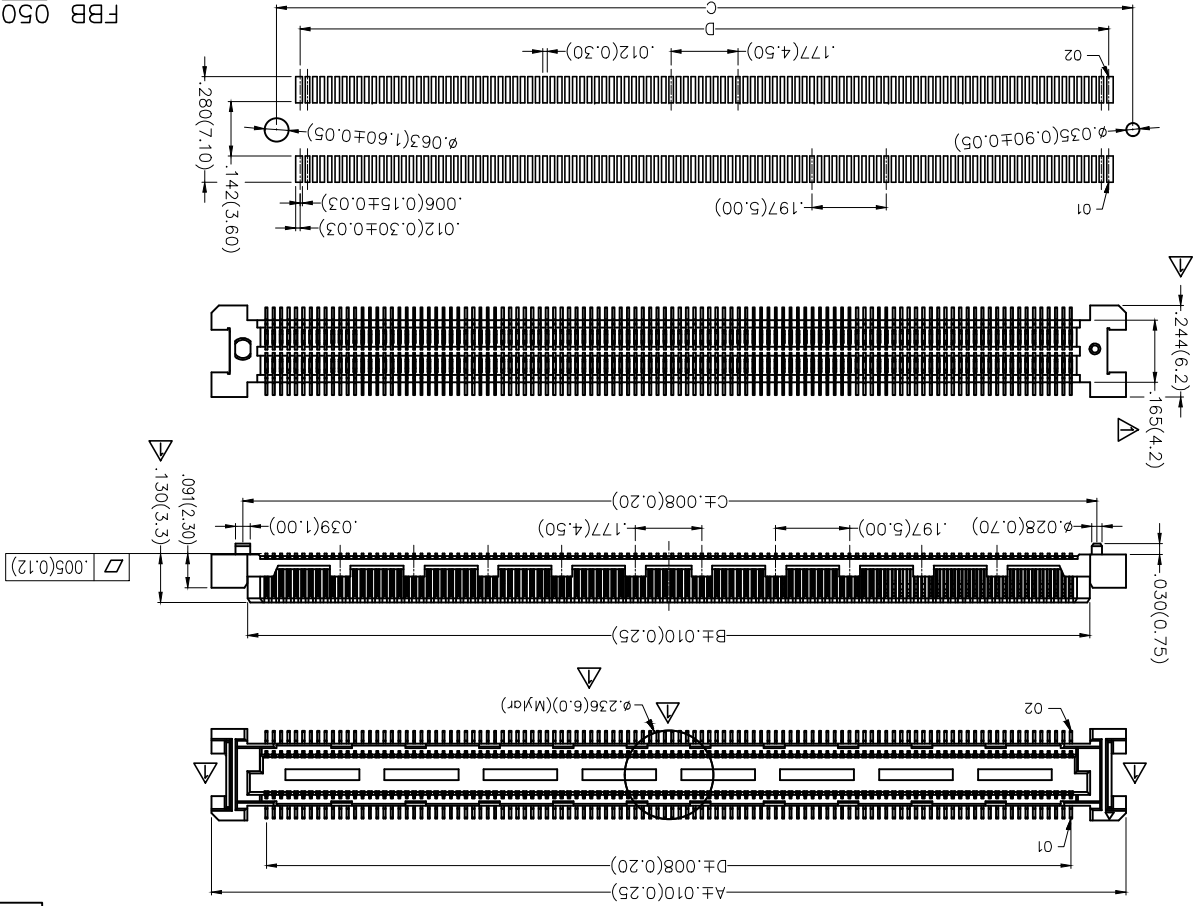


Ordering Information

FBB 050 09 — M XXX S 3 XX 3 K6 M
 1 2 3 4 5 6 7 8 9 10 11

- 1 Category | FBB—Board to Board
- 2 Series Number | 050—Pitch0.50mm
- 3 Distinction No. | 09
- 4 Type | M—Male
- 5 Circuits | XXX
- 6 Entry Angle | S—180° Vertical
- 7 Plating | tin on tail
3—Selective gold in contact area,
01—1μ
03—3μ
- 8 Thickness of Plating | Custom plate available
- 9 Material—Resin | 3—LCP
- 10 Color—Resin | K6—Black
- 11 Packaging | M—Reel

Recommended P.C.Board Layout
 General Tolerances: ±.002(0.05)

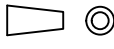


THIRD ANGLE PROJECTION		DESIGN UNITS	SCALE	GENERAL TOLERANCES (UNLESS SPECIFIED)		APPROVE BY	DATE	PART NO.	ITEM NO.
		X.±.012(0.30)	5:1	X.±.012(0.30)		FRANK	16/AUG/19	FBB05009-MXXXS3XX3K6M	FBB05009
Inch (metric)		X.±.008(0.20)	A4	X.±.008(0.20)		CHEERY	16/AUG/19	Board to Board Pitch 0.5mm 180° Vertical (SMT)	
X.±.006(0.15)		X.±.006(0.15)		X.±.006(0.15)		DATE		TITLE	
X.±.004(0.10)		X.±.004(0.10)		X.±.004(0.10)		DRAWN BY		Leader Of Industry	
X.±.005		X.±.005		X.±.005		Aubrey	16/AUG/19	Electronics(SZ)CO.,LTD AND SHOULD NOT BE USED WITHOUT WRITTEN PERMISSION	



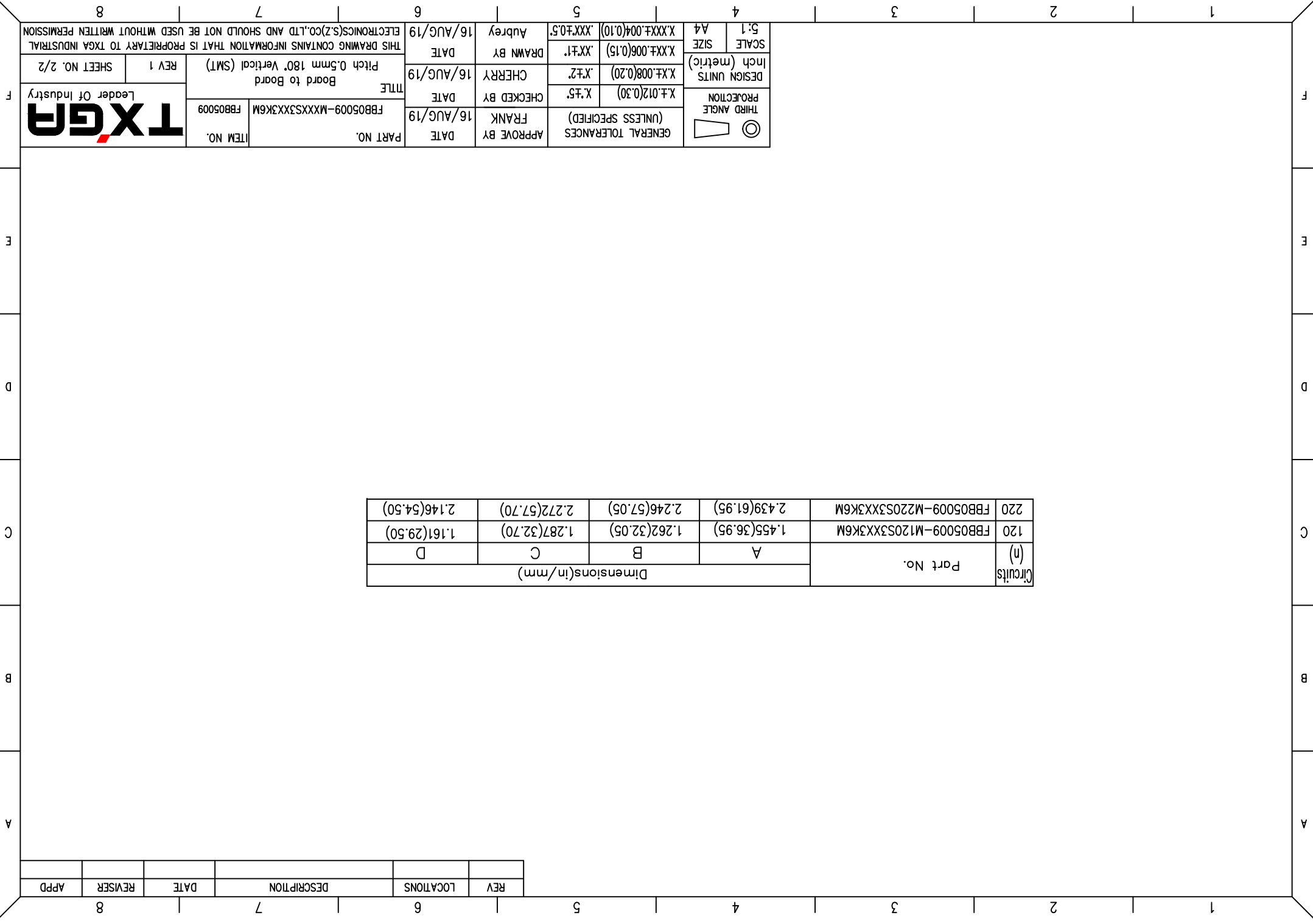
APPD	REVISER	DATE	DESCRIPTION	LOCATIONS	REV

Circuits (n)	Part No.	Dimensions(in/mm)			
		A	B	C	D
120	FBB05009-M120S3XX3K6M	1.455(36.95)	1.262(32.05)	1.287(32.70)	1.161(29.50)
220	FBB05009-M220S3XX3K6M	2.439(61.95)	2.246(57.05)	2.272(57.70)	2.146(54.50)

THIRD ANGLE PROJECTION 	DATE	16/AUG/19	APPROVE BY	FRANK	GENERAL TOLERANCES (UNLESS SPECIFIED)
	DATE	16/AUG/19	CHECKED BY	CHERRY	X.±.012(0.30)
DESIGN UNITS Inch (metric)	DATE	16/AUG/19	DRAWN BY	Aubrey	X.±.008(0.20)
SCALE 5:1	DATE	16/AUG/19	DATE	16/AUG/19	X.±.006(0.15)
SIZE A4	THIS DRAWING CONTAINS INFORMATION THAT IS PROPRIETARY TO TXGA INDUSTRIAL ELECTRONICS(SZ)CO.,LTD AND SHOULD NOT BE USED WITHOUT WRITTEN PERMISSION				

PART NO.	FBB05009-MXXXS3XX3K6M
ITEM NO.	FBB05009
TITLE	Board to Board
	Pitch 0.5mm 180° Vertical (SMT)
REV 1	SHEET NO. 2/2

TXGA
Leader Of Industry



X-ON Electronics

Largest Supplier of Electrical and Electronic Components

Click to view similar products for [Board to Board & Mezzanine Connectors](#) category:

Click to view products by [TXGA](#) manufacturer:

Other Similar products are found below :

[10135583-642402LF](#) [89885-310LF](#) [589158040000018](#) [6-1393048-0](#) [68683-613](#) [MDF7-12DP-2.54DSA](#) [MDF7-18P-2.54DSA\(01\)](#) [MDF7-20DP-2.54DSA](#) [MDF7-26D-2.54DSA\(55\)](#) [MDF7-3P-2.54DSA\(01\)](#) [MDF7B-20P-2.54DSA\(01\)](#) [MDF7B-3P-2.54DSA\(55\)](#) [MDF7C-11P-2.54DSA\(55\)](#) [MDF7C-18P-2.54DSA\(55\)](#) [MDF7C-5P-2.54DSA\(01\)](#) [MDF7P-5P-2.54DSA\(55\)](#) [75234-0516](#) [FCN-230C068-11](#) [FCN-268F012-G/BD](#) [FCN-268F036-G/BD](#) [FCN-268M012-G/0D](#) [FCN-268M024-G/1D](#) [FCN-360C008-C](#) [FCN-360C040-C](#) [FCN-723J004/1](#) [MIS-048-01-F-D-DP-K](#) [832-10-034-10-001000](#) [93696-325LF](#) [11828-1FA](#) [AXK630345P](#) [18097-0013](#) [ICA-328STT](#) [2007042-2](#) [304400-2](#) [FCN-214Q030-G/0](#) [FCN-215Q040-G/0](#) [FCN-230C068-ESA](#) [FCN-234P048-G/0](#) [FCN-235D050-G/C](#) [FCN-360A3](#) [FCN-360C040-B](#) [210-93-314-41-105000](#) [2-22603-0](#) [379-064-521-202](#) [MDF7-12P-2.54DSA\(01\)](#) [MDF7-16P-2.54DS\(56\)](#) [MDF7-40DP-2.54DSA\(55\)](#) [MDF7-8P-2.54DSA\(55\)](#) [MDF7B-16P-2.54DSA\(55\)](#) [AXG720047](#)