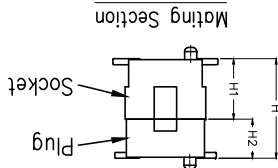
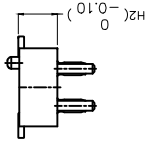


REV	LOCATIONS	DESCRIPTION	DATE	REVISER	APPD
△		Part No. Change FR-080MSS-DXX-HXX To FB80801-MXXS1XX3XXMHXX	29/OCT/13	JACOB	CHERRY

**Electrical**  
 Current Rating: 0.5A AC(rms)/DC  
 Voltage Rating: 50V AC(rms)/DC  
 Contact Resistance: 50 mΩ Max  
 Insulation Resistance: 500 MΩ MIN  
 Withstanding Voltage: 250V AC r.m.s  
 Temperature Range-Operating: -25°C~+85°C  
 Material and Plating  
 Housing: LCP (UL 94V-0)  
 Contact Pin: Phosphor Bronze  
 Plating: Gold Plated



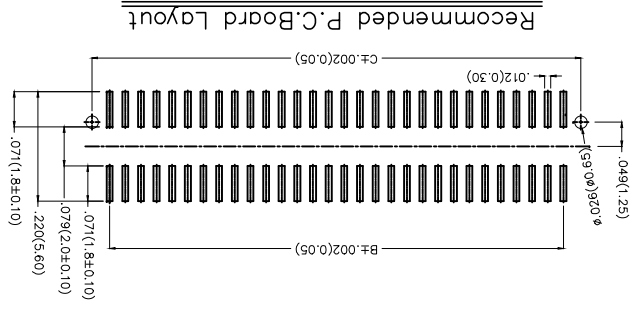
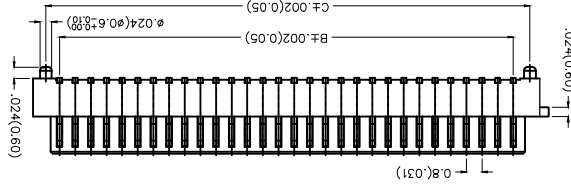
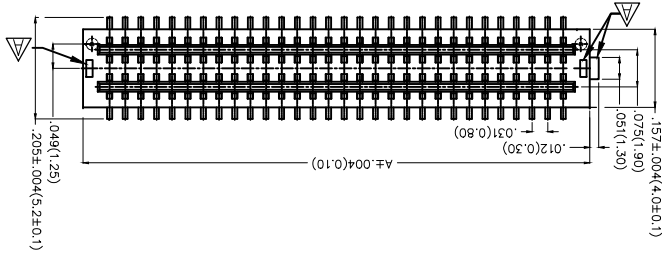
Height H1(in/mm)	Female H1(in/mm)	Male H2(in/mm)
.157(4.00)	.118(3.00)	.039(1.00)
.177(4.50)	.138(3.50)	.039(1.00)
.197(5.00)	.157(4.00)	.039(1.00)
.217(5.50)	.177(4.50)	.039(1.00)
.236(6.00)	.157(4.00)	.079(2.00)
.256(6.50)	.177(4.50)	.079(2.00)

### Ordering Information

1 FBB 080 01 - M XX S 1 / XX S 1  
 2 080 - Pitch 0.8mm  
 3 01 - Distinction No.  
 4 M - Type  
 5 XX - Circuits  
 6 S - Entry Angle  
 7 180 - Vertical  
 8 12 - Male High  
 9 H10 - 1.0mm  
 10 H20 - 2.0mm

1	Category	FBB-Board To Board
2	Series Number	080-Pitch 0.8mm
3	Distinction No.	01
4	Type	M-Male
5	Circuits	XX
6	Entry Angle	S-180° Vertical
7	Plating	1-Gold Plated
8	Thickness of Plating	00-Gold Flash 03-3μ
9	Material-Resin	3-LCP
10	Color-Resin	WS-White K6-Black M-Reel
11	Packaging	M-Reel
12	Male High	H10-1.0mm H20-2.0mm

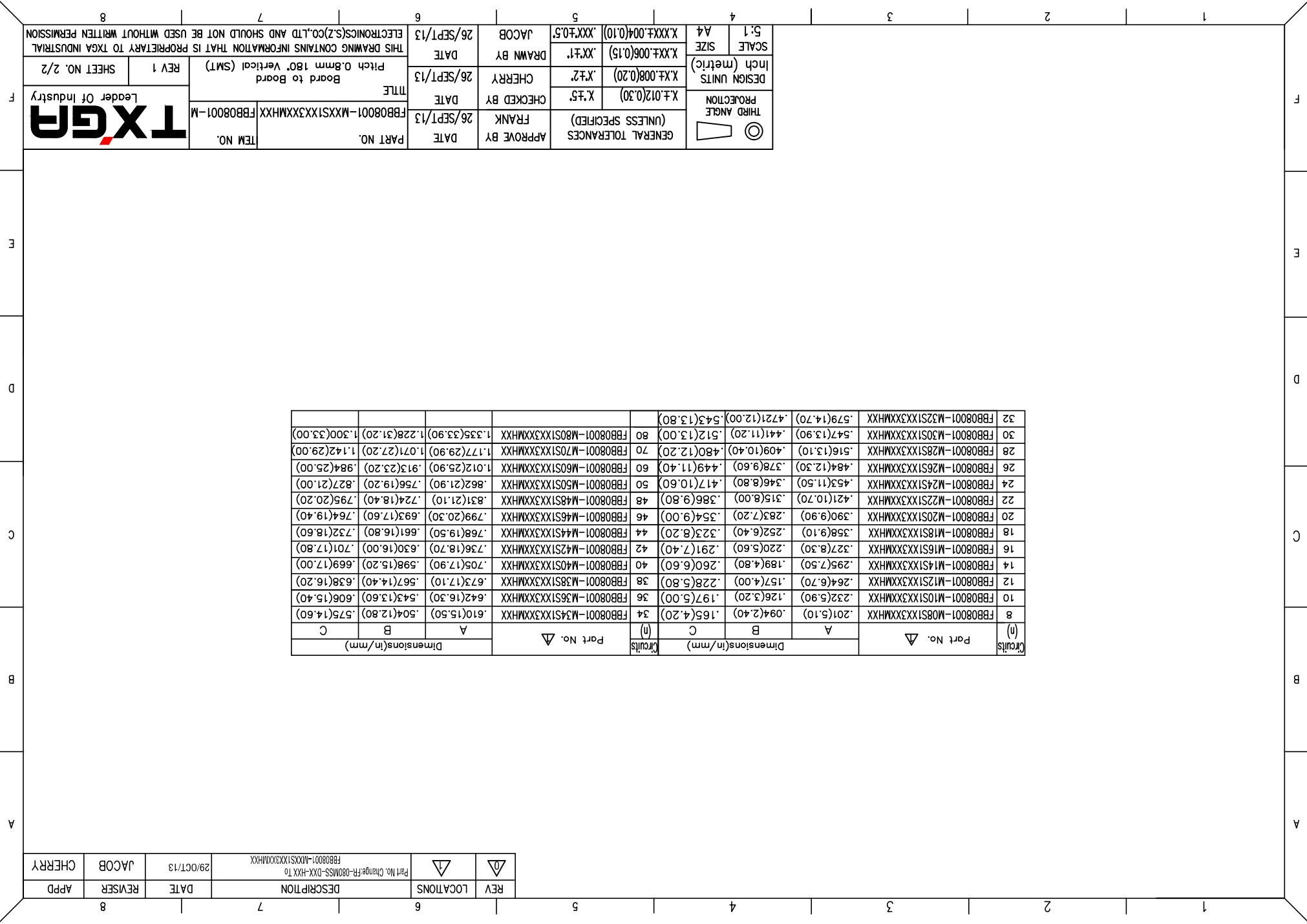
THIRD ANGLE PROJECTION	DESIGN UNITS	SCALE	5:1
(UNLESS SPECIFIED)	Inch (metric)	A4	
APPROVE BY	DATE	DRAWN BY	DATE
FRANK	26/SEP/13	CHERRY	26/SEP/13
CHECKED BY	DATE		
X.±.5	26/SEP/13		
X.±.012(0.30)			
X.±.008(0.20)			
X.±.006(0.15)			
X.±.004(0.10)			
X.±.05			
JACOB			
26/SEP/13			
GENERAL TOLERANCES (UNLESS SPECIFIED)			
PART NO. FB80801-M			
TITLE Board to Board Pitch 0.8mm 180° Vertical (SMT)			
REV 1 SHEET NO. 1/2			
THIS DRAWING CONTAINS INFORMATION THAT IS PROPRIETARY TO TXGA INDUSTRIAL ELECTRONICS(SZ)CO.,LTD AND SHOULD NOT BE USED WITHOUT WRITTEN PERMISSION			



REV	LOCATIONS	Part No. Change FR-080MSS-DXX-HXX To FBB08001-MXXS1XX3XXMHXX	29/OCT/13	JACOB	CHERRY
APPD	REVISER	DATE			

Circuits	Part No. ▽	Dimensions(in/mm)		
		A	B	C
8	FBB08001-M08S1XX3XXMHXX	.201(5.10)	.094(2.40)	.165(4.20)
10	FBB08001-M10S1XX3XXMHXX	.232(5.90)	.126(3.20)	.197(5.00)
12	FBB08001-M12S1XX3XXMHXX	.264(6.70)	.157(4.00)	.228(5.80)
14	FBB08001-M14S1XX3XXMHXX	.295(7.50)	.189(4.80)	.260(6.60)
16	FBB08001-M16S1XX3XXMHXX	.327(8.30)	.220(5.60)	.291(7.40)
18	FBB08001-M18S1XX3XXMHXX	.358(9.10)	.252(6.40)	.323(8.20)
20	FBB08001-M20S1XX3XXMHXX	.390(9.90)	.283(7.20)	.354(9.00)
22	FBB08001-M22S1XX3XXMHXX	.421(10.70)	.315(8.00)	.386(9.80)
24	FBB08001-M24S1XX3XXMHXX	.453(11.50)	.346(8.80)	.417(10.60)
26	FBB08001-M26S1XX3XXMHXX	.484(12.30)	.378(9.60)	.449(11.40)
28	FBB08001-M28S1XX3XXMHXX	.516(13.10)	.409(10.40)	.480(12.20)
30	FBB08001-M30S1XX3XXMHXX	.547(13.90)	.441(11.20)	.512(13.00)
32	FBB08001-M32S1XX3XXMHXX	.579(14.70)	.472(12.00)	.543(13.80)
34	FBB08001-M34S1XX3XXMHXX	.610(15.50)	.504(12.80)	.575(14.60)
36	FBB08001-M36S1XX3XXMHXX	.642(16.30)	.543(13.60)	.606(15.40)
38	FBB08001-M38S1XX3XXMHXX	.673(17.10)	.587(14.40)	.638(16.20)
40	FBB08001-M40S1XX3XXMHXX	.705(17.90)	.598(15.20)	.669(17.00)
42	FBB08001-M42S1XX3XXMHXX	.736(18.70)	.630(16.00)	.701(17.80)
44	FBB08001-M44S1XX3XXMHXX	.768(19.50)	.661(16.80)	.732(18.60)
46	FBB08001-M46S1XX3XXMHXX	.799(20.30)	.693(17.60)	.764(19.40)
48	FBB08001-M48S1XX3XXMHXX	.831(21.10)	.724(18.40)	.795(20.20)
50	FBB08001-M50S1XX3XXMHXX	.862(21.90)	.756(19.20)	.827(21.00)
58	FBB08001-M60S1XX3XXMHXX	1.012(25.90)	.915(23.20)	.984(25.00)
60	FBB08001-M70S1XX3XXMHXX	1.177(29.90)	1.071(27.20)	1.142(29.00)
70	FBB08001-M80S1XX3XXMHXX	1.335(33.90)	1.228(31.20)	1.300(33.00)

SCALE	5:1	SHEET	A4	GENERAL TOLERANCES (UNLESS SPECIFIED)	APPROVE BY	DATE	PART NO.	ITEM NO.
DESIGN UNITS	Inch (metric)	X.XX±.008(0.20)	X.XX±.006(0.15)	X.XX±.012(0.30)	FRRANK	26/SEP/13	FBB08001-MXXS1XX3XXMHXX	
THIRD ANGLE		X.XX±.008(0.20)	X.XX±.006(0.15)	X.XX±.012(0.30)	CHECKED BY	DATE	TITLE	
		X.XX±.006(0.15)	X.XX±.004(0.10)	X.XX±.004(0.10)	DRAWN BY	DATE	Board to Board Pitch 0.8mm 180° Vertical (SMT)	REV 1
		X.XX±.004(0.10)	X.XX±.004(0.10)	X.XX±.004(0.10)	JACOB	26/SEP/13	THIS DRAWING CONTAINS INFORMATION THAT IS PROPRIETARY TO TXGA INDUSTRIAL ELECTRONICS(SZ)CO.,LTD AND SHOULD NOT BE USED WITHOUT WRITTEN PERMISSION	SHEET NO. 2/2



## X-ON Electronics

Largest Supplier of Electrical and Electronic Components

*Click to view similar products for [Board to Board & Mezzanine Connectors](#) category:*

*Click to view products by [TXGA](#) manufacturer:*

Other Similar products are found below :

[10135583-642402LF](#) [89885-310LF](#) [589158040000018](#) [6-1393048-0](#) [68683-613](#) [MDF7-12DP-2.54DSA](#) [MDF7-18P-2.54DSA\(01\)](#) [MDF7-20DP-2.54DSA](#) [MDF7-26D-2.54DSA\(55\)](#) [MDF7-3P-2.54DSA\(01\)](#) [MDF7B-20P-2.54DSA\(01\)](#) [MDF7B-3P-2.54DSA\(55\)](#) [MDF7C-11P-2.54DSA\(55\)](#) [MDF7C-18P-2.54DSA\(55\)](#) [MDF7C-5P-2.54DSA\(01\)](#) [MDF7P-5P-2.54DSA\(55\)](#) [75234-0516](#) [FCN-230C068-11](#) [FCN-268F012-G/BD](#) [FCN-268F036-G/BD](#) [FCN-268M012-G/0D](#) [FCN-268M024-G/1D](#) [FCN-360C008-C](#) [FCN-360C040-C](#) [FCN-723J004/1](#) [MIS-048-01-F-D-DP-K](#) [832-10-034-10-001000](#) [93696-325LF](#) [11828-1FA](#) [AXK630345P](#) [18097-0013](#) [ICA-328STT](#) [2007042-2](#) [304400-2](#) [FCN-214Q030-G/0](#) [FCN-215Q040-G/0](#) [FCN-230C068-ESA](#) [FCN-234P048-G/0](#) [FCN-235D050-G/C](#) [FCN-360A3](#) [FCN-360C040-B](#) [210-93-314-41-105000](#) [2-22603-0](#) [379-064-521-202](#) [MDF7-12P-2.54DSA\(01\)](#) [MDF7-16P-2.54DS\(56\)](#) [MDF7-40DP-2.54DSA\(55\)](#) [MDF7-8P-2.54DSA\(55\)](#) [MDF7B-16P-2.54DSA\(55\)](#) [AXG720047](#)