

REV	1	LOCATIONS	△
DESCRIPTION	Structure Change		
DATE	26/MAY/20	REVISER	KATE
APPD	CHERRY		

SPECIFICATIONS

Electrical  
 Current Rating: 0.5A AC(rms)/DC  
 Voltage Rating: 50V AC(rms)/DC  
 Contact Resistance: 90 mΩ Max.  
 Insulation Resistance: 500 MΩ Min.  
 Withstanding Voltage: 150V AC r.m.s  
 Temperature Range—Operating: -30°C~+80°C  
 Material and Plating  
 Housing: PA9T (UL 94V-0)  
 Contacts: Phosphor Bronze/ Gold Plated

Circuits (n)	Part No.	Dimensions(in/mm)			
		A	B	C	D
14	FBB08002-M14S1XX5W5M	.287(7.30)	.252(6.40)	.189(4.80)	.256(6.50)
24	FBB08002-M24S1XX5W5M	.445(11.30)	.409(10.40)	.346(8.80)	.413(10.50)
28	FBB08002-M28S1XX5W5M	.508(12.90)	.472(12.00)	.409(10.40)	.476(12.10)
30	FBB08002-M30S1XX5W5M	.539(13.70)	.504(12.80)	.441(11.20)	.508(12.90)
40	FBB08002-M40S1XX5W5M	.697(17.70)	.661(16.80)	.598(15.20)	.665(16.90)

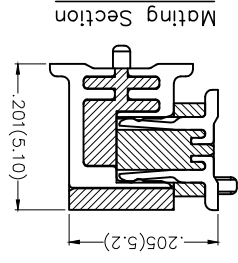
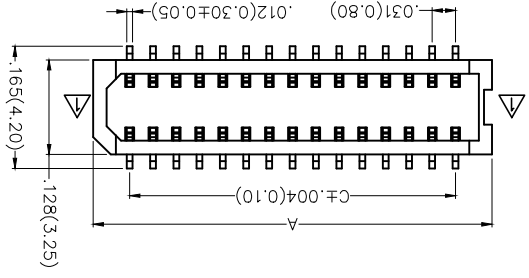
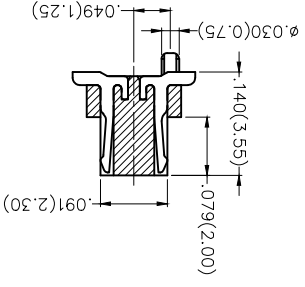
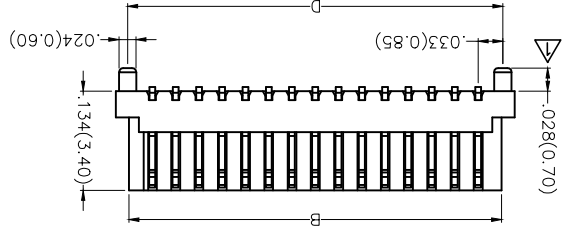
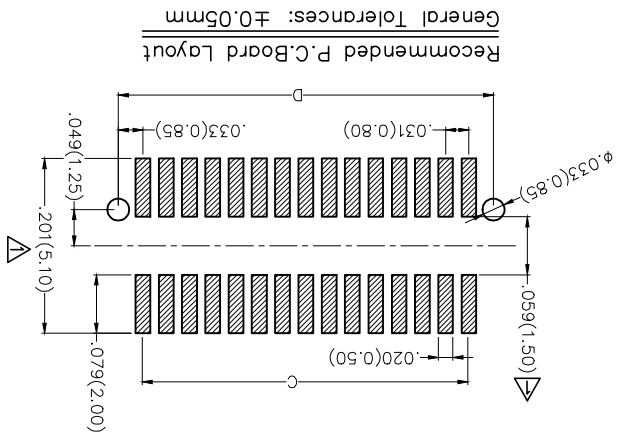
Ordering Information

FBB 080 02 - M XX S 1 XX S 5 W5 M

- Category
- Series Number
- Distinction No.
- Type
- Circuits
- Entry Angle
- FBB-Board to Board
- Plating
- Thickness of Plating
- Material-Resin
- Color-Resin
- M-Male
- XX
- Entry Angle
- S-180° Vertical
- Packaging
- M-Reel

GENERAL TOLERANCES (UNLESS SPECIFIED)	APPROVE BY	DATE	PART NO.	ITEM NO.
	FRANK	22/FEB/17	FBB08002-MXXS1XX5W5M	FBB08002
THIRD ANGLE PROJECTION	CHECKED BY	DATE	TITLE	
	CHERRY	22/FEB/17	Board to Board	
DESIGN UNITS	DRAWN BY	DATE	REV 1	SHEET NO. 1/1
Inch (metric)	KATE	22/FEB/17	Pitch 0.8mm 180° Vertical (SMT)	
SCALE			THIS DRAWING CONTAINS INFORMATION THAT IS PROPRIETARY TO TXGA INDUSTRIAL ELECTRONICS(SZ)CO.,LTD AND SHOULD NOT BE USED WITHOUT WRITTEN PERMISSION	
5:1				
A4				

8 7 6 5 4 3 2 1



F E D C B A

3 2 1

## X-ON Electronics

Largest Supplier of Electrical and Electronic Components

*Click to view similar products for [Board to Board & Mezzanine Connectors](#) category:*

*Click to view products by [TXGA](#) manufacturer:*

Other Similar products are found below :

[10135583-642402LF](#) [89885-310LF](#) [589158040000018](#) [6-1393048-0](#) [68683-613](#) [MDF7-12DP-2.54DSA](#) [MDF7-18P-2.54DSA\(01\)](#) [MDF7-20DP-2.54DSA](#) [MDF7-26D-2.54DSA\(55\)](#) [MDF7-3P-2.54DSA\(01\)](#) [MDF7B-20P-2.54DSA\(01\)](#) [MDF7B-3P-2.54DSA\(55\)](#) [MDF7C-11P-2.54DSA\(55\)](#) [MDF7C-18P-2.54DSA\(55\)](#) [MDF7C-5P-2.54DSA\(01\)](#) [MDF7P-5P-2.54DSA\(55\)](#) [75234-0516](#) [FCN-230C068-11](#) [FCN-268F012-G/BD](#) [FCN-268F036-G/BD](#) [FCN-268M012-G/0D](#) [FCN-268M024-G/1D](#) [FCN-360C008-C](#) [FCN-360C040-C](#) [FCN-723J004/1](#) [MIS-048-01-F-D-DP-K](#) [832-10-034-10-001000](#) [93696-325LF](#) [11828-1FA](#) [AXK630345P](#) [18097-0013](#) [ICA-328STT](#) [2007042-2](#) [304400-2](#) [FCN-214Q030-G/0](#) [FCN-215Q040-G/0](#) [FCN-230C068-ESA](#) [FCN-234P048-G/0](#) [FCN-235D050-G/C](#) [FCN-360A3](#) [FCN-360C040-B](#) [210-93-314-41-105000](#) [2-22603-0](#) [379-064-521-202](#) [MDF7-12P-2.54DSA\(01\)](#) [MDF7-16P-2.54DS\(56\)](#) [MDF7-40DP-2.54DSA\(55\)](#) [MDF7-8P-2.54DSA\(55\)](#) [MDF7B-16P-2.54DSA\(55\)](#) [AXG720047](#)