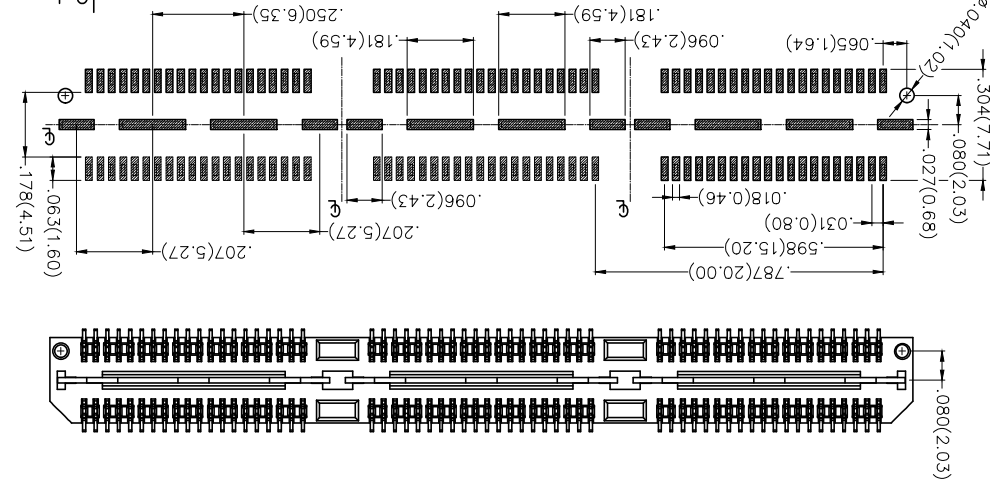
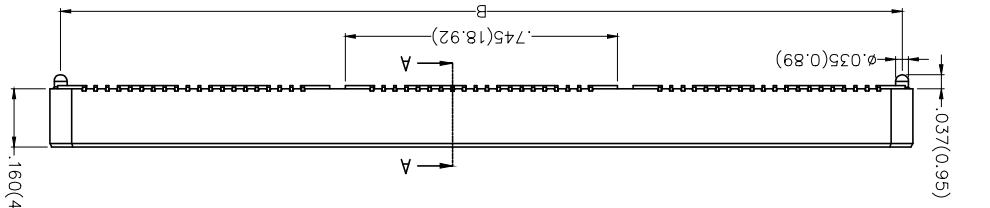
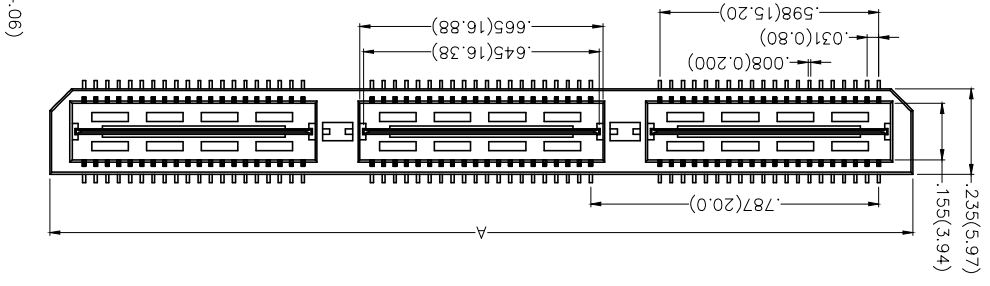
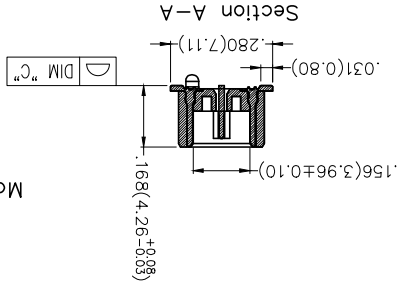


REV	LOCATIONS	DESCRIPTION	DATE	REVISER	APPD

SPECIFICATIONS

Electrical  
 Current Rating: 2.0A(Circuits), 16A(Ground)  
 (One pin power per row)  
 Voltage Rating: 225V AC(rms)/DC  
 Contact Resistance: 15 mΩ Max.  
 Insulation Resistance: 5000 MΩ Min.  
 Withstanding Voltage: 675V AC r.m.s  
 Temperature Range—Operating: -55°C~+85°C  
 Material and Plating  
 Housing: LCP (UL 94V-0)  
 Contacts: Phosphor Bronze/ Selective gold in  
 contact area, matte tin on tail



Recommended P.C.Board Layout  
 General Tolerances: ±0.05mm

Ordering Information  
 FBB 080 04 - M XX S 3 XX S 3 K6 M  
 1 2 3 4 5 6 7 8 9 10 11

- 1 Category | FBB-Board to Board
- 2 Series Number | 080-Pitch0.80mm
- 3 Distinction No. | 04
- 4 Type | M-Male
- 5 Circuits | XX
- 6 Entry Angle | S-180° Vertical
- 7 Plating | tin on tail  
3-Selective gold in contact area, 05-5µ  
03-3µ
- 8 Thickness of Plating | Custom plate available
- 9 Material-Resin | 3-LCP
- 10 Color-Resin | K6-Black
- 11 Packaging | M-Reel

Circuits (n)	Part No.	Dimensions(in/mm)		
		A	B	C
40	FBB08004-M053XX3K6M	.787(20.00)	.728(18.48)	.004(0.10)
80	FBB08004-M8053XX3K6M	1.575(40.00)	1.515(38.48)	.004(0.10)
120	FBB08004-M12053XX3K6M	2.362(60.00)	2.302(58.48)	.006(0.15)

THIRD ANGLE PROJECTION	DESIGN UNITS	X.XX.XX(0.30)	X.XX.XX(0.10)	X.XX.XX(0.04)	X.XX.XX(0.10)	SCALE	5:1					
	Inch (metric)	X.XX.XX(0.20)	X.XX.XX(0.15)	X.XX.XX(0.05)	X.XX.XX(0.10)	SCALE SIZE	A4					
GENERAL TOLERANCES (UNLESS SPECIFIED)	APPROVE BY	DATE	21/DEC/18	FRANK	CHECKED BY	DATE	21/DEC/18	CHERRY	DRAWN BY	DATE	21/DEC/18	KATE
PART NO.	ITEM NO.	FBB08004-MXXSXX3K6M	FBB08004	TXGA	Board to Board	Pitch 0.8mm 180° Vertical (SMT)	REV 0	SHEET NO. 1/1	THIS DRAWING CONTAINS INFORMATION THAT IS PROPRIETARY TO TXGA INDUSTRIAL ELECTRONICS(S)ZCO.,LTD AND SHOULD NOT BE USED WITHOUT WRITTEN PERMISSION			



## X-ON Electronics

Largest Supplier of Electrical and Electronic Components

*Click to view similar products for [Board to Board & Mezzanine Connectors](#) category:*

*Click to view products by [TXGA](#) manufacturer:*

Other Similar products are found below :

[10135583-642402LF](#) [89885-310LF](#) [589158040000018](#) [6-1393048-0](#) [68683-613](#) [MDF7-12DP-2.54DSA](#) [MDF7-18P-2.54DSA\(01\)](#) [MDF7-20DP-2.54DSA](#) [MDF7-26D-2.54DSA\(55\)](#) [MDF7-3P-2.54DSA\(01\)](#) [MDF7B-20P-2.54DSA\(01\)](#) [MDF7B-3P-2.54DSA\(55\)](#) [MDF7C-11P-2.54DSA\(55\)](#) [MDF7C-18P-2.54DSA\(55\)](#) [MDF7C-5P-2.54DSA\(01\)](#) [MDF7P-5P-2.54DSA\(55\)](#) [75234-0516](#) [FCN-230C068-11](#) [FCN-268F012-G/BD](#) [FCN-268F036-G/BD](#) [FCN-268M012-G/0D](#) [FCN-268M024-G/1D](#) [FCN-360C008-C](#) [FCN-360C040-C](#) [FCN-723J004/1](#) [MIS-048-01-F-D-DP-K](#) [832-10-034-10-001000](#) [93696-325LF](#) [11828-1FA](#) [AXK630345P](#) [18097-0013](#) [ICA-328STT](#) [2007042-2](#) [304400-2](#) [FCN-214Q030-G/0](#) [FCN-215Q040-G/0](#) [FCN-230C068-ESA](#) [FCN-234P048-G/0](#) [FCN-235D050-G/C](#) [FCN-360A3](#) [FCN-360C040-B](#) [210-93-314-41-105000](#) [2-22603-0](#) [379-064-521-202](#) [MDF7-12P-2.54DSA\(01\)](#) [MDF7-16P-2.54DS\(56\)](#) [MDF7-40DP-2.54DSA\(55\)](#) [MDF7-8P-2.54DSA\(55\)](#) [MDF7B-16P-2.54DSA\(55\)](#) [AXG720047](#)