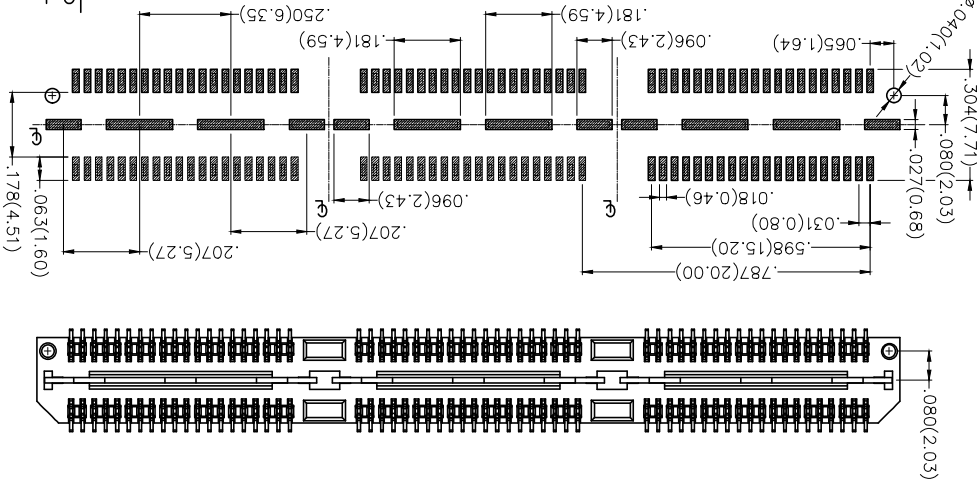
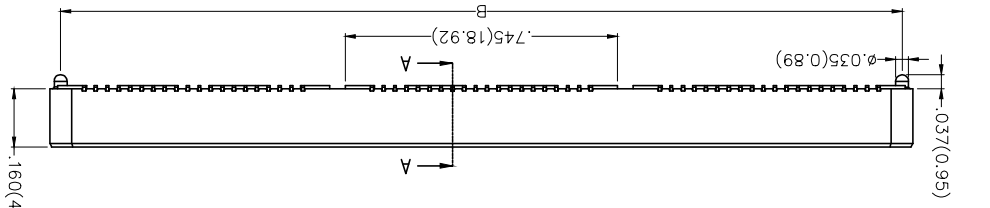
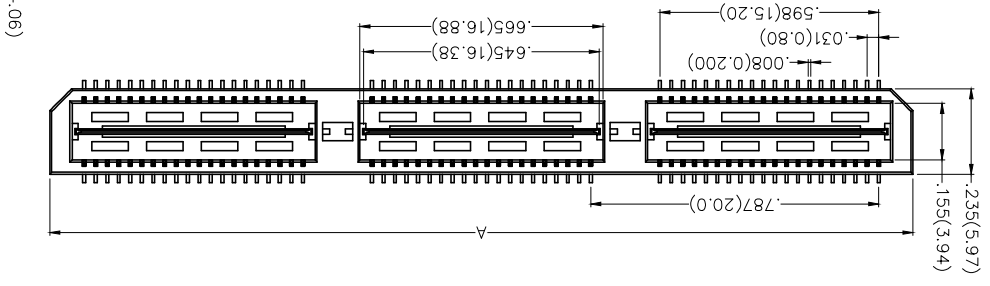
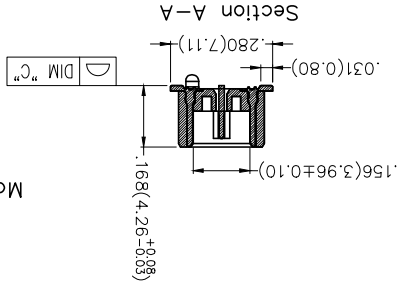


REV	LOCATIONS	DESCRIPTION	DATE	REVISER	APPD

SPECIFICATIONS

Electrical
 Current Rating: 2.0A(Circuits), 16A(Ground)
 (One pin power per row)
 Voltage Rating: 225V AC(rms)/DC
 Contact Resistance: 15 mΩ Max.
 Insulation Resistance: 5000 MΩ Min.
 Withstanding Voltage: 675V AC r.m.s
 Temperature Range—Operating: -55°C~+85°C
 Material and Plating
 Housing: LCP (UL 94V-0)
 Contacts: Phosphor Bronze/ Selective gold in
 contact area, matte tin on tail



Recommended P.C.Board Layout
 General Tolerances: ±0.05mm

Circuits (n)	Part No.	Dimensions(in/mm)		
		A	B	C
40	FBB08004-M053XX3X3K6M	.787(20.00)	.728(18.48)	.004(0.10)
80	FBB08004-M8053XX3X3K6M	1.575(40.00)	1.515(38.48)	.004(0.10)
120	FBB08004-M12053XX3X3K6M	2.362(60.00)	2.302(58.48)	.006(0.15)

Ordering Information

1 Category
 2 Series Number
 3 Distinction No.
 4 Type
 5 Circuits
 6 Entry Angle
 7 Plating
 8 Thickness of Plating
 9 Material-Resin
 10 Color-Resin
 11 Packaging

FBB 080 04 - M XX S 3 XX 3 K6 M

- Category
- Series Number
- Distinction No.
- Type
- Circuits
- Entry Angle
- Plating
- Thickness of Plating
- Material-Resin
- Color-Resin
- Packaging

THIRD ANGLE PROJECTION	APPROVE BY	DATE	PART NO.	ITEM NO.
	FRANK	21/DEC/18	FBB08004-MXXS3XX3X3K6M	FBB08004
GENERAL TOLERANCES (UNLESS SPECIFIED)	CHECKED BY	DATE	TITLE	
	FRANK	21/DEC/18	Board to Board Vertical (SMT)	
DESIGN UNITS	DRAWN BY	DATE	THIS DRAWING CONTAINS INFORMATION THAT IS PROPRIETARY TO TXGA INDUSTRIAL ELECTRONICS(S)Z(CO.,LTD AND SHOULD NOT BE USED WITHOUT WRITTEN PERMISSION	
Inch (metric)	CHERRY	21/DEC/18	REV 0	SHEET NO. 1/1
SCALE	DRAWN BY	DATE		
5:1	KATE	21/DEC/18		
A4	DATE			
X.XXX±.004(0.10)				
X.XX±.006(0.15)				
X.XX±.008(0.20)				
X.XX±.012(0.30)				
X.XX±.015				



X-ON Electronics

Largest Supplier of Electrical and Electronic Components

Click to view similar products for [Board to Board & Mezzanine Connectors](#) category:

Click to view products by [TXGA](#) manufacturer:

Other Similar products are found below :

[10135583-642402LF](#) [89885-310LF](#) [589158040000018](#) [6-1393048-0](#) [68683-613](#) [MDF7-12DP-2.54DSA](#) [MDF7-18P-2.54DSA\(01\)](#) [MDF7-20DP-2.54DSA](#) [MDF7-26D-2.54DSA\(55\)](#) [MDF7-3P-2.54DSA\(01\)](#) [MDF7B-20P-2.54DSA\(01\)](#) [MDF7B-3P-2.54DSA\(55\)](#) [MDF7C-11P-2.54DSA\(55\)](#) [MDF7C-18P-2.54DSA\(55\)](#) [MDF7C-5P-2.54DSA\(01\)](#) [MDF7P-5P-2.54DSA\(55\)](#) [75234-0516](#) [FCN-230C068-11](#) [FCN-268F012-G/BD](#) [FCN-268F036-G/BD](#) [FCN-268M012-G/0D](#) [FCN-268M024-G/1D](#) [FCN-360C008-C](#) [FCN-360C040-C](#) [FCN-723J004/1](#) [MIS-048-01-F-D-DP-K](#) [832-10-034-10-001000](#) [93696-325LF](#) [11828-1FA](#) [AXK630345P](#) [18097-0013](#) [ICA-328STT](#) [2007042-2](#) [304400-2](#) [FCN-214Q030-G/0](#) [FCN-215Q040-G/0](#) [FCN-230C068-ESA](#) [FCN-234P048-G/0](#) [FCN-235D050-G/C](#) [FCN-360A3](#) [FCN-360C040-B](#) [210-93-314-41-105000](#) [2-22603-0](#) [379-064-521-202](#) [MDF7-12P-2.54DSA\(01\)](#) [MDF7-16P-2.54DS\(56\)](#) [MDF7-40DP-2.54DSA\(55\)](#) [MDF7-8P-2.54DSA\(55\)](#) [MDF7B-16P-2.54DSA\(55\)](#) [AXG720047](#)