

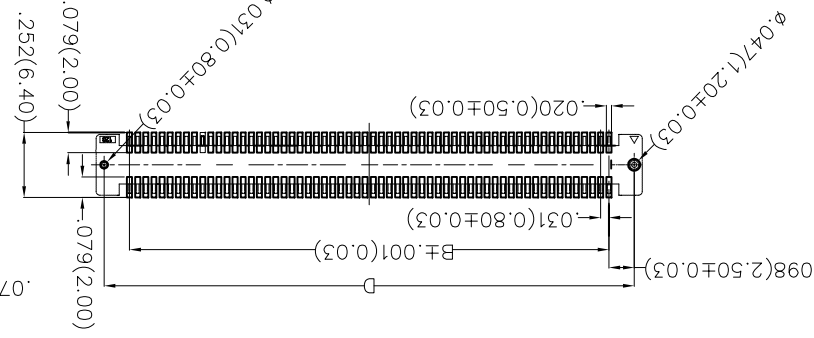
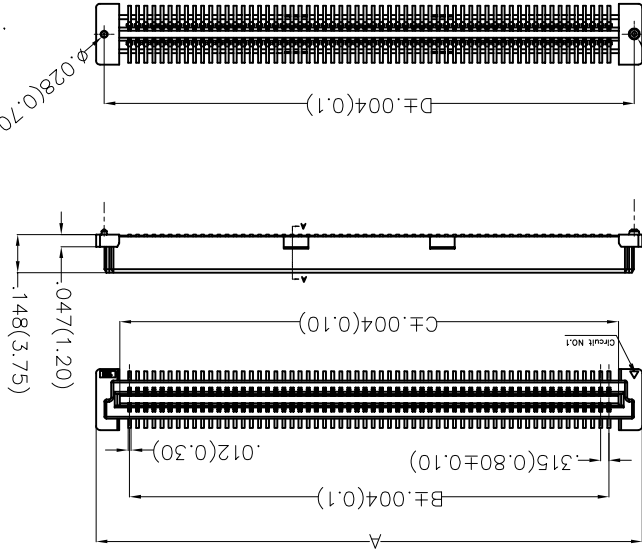
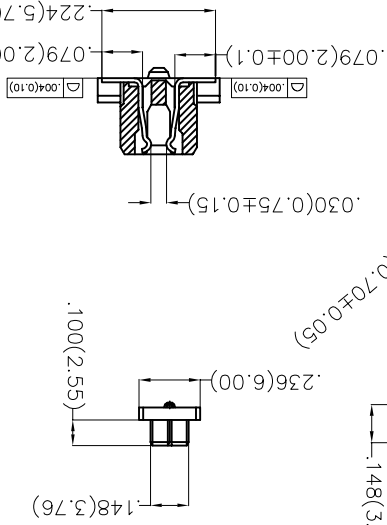
REV	LOCATIONS	DESCRIPTION	DATE	REVISER	APPD

Electrical
 Current Rating: 0.5A AC(rms)/DC
 Voltage Rating: 50V AC(rms)/DC
 Contact Resistance: 50 mΩ Max.
 Insulation Resistance: 500 MΩ Min.
 Withstanding Voltage: 200V AC r.m.s
 Temperature Range—Operating: -35°C~+85°C
Material and Plating
 Housing: LCP (UL94V-0)
 Contacts Pin: Phosphor Bronze
 Plating: Gold plated

Circuits (h)	Part No.	Dimensions(in/mm)			
		A	B	C	D
40	FBB08006-F40S1XX3WSM	.858(21.80)	.598(15.20)	.673(17.10)	.795(20.20)
50	FBB08006-F50S1XX3WSM	1.016(25.80)	.756(19.20)	.831(21.10)	.953(24.20)
60	FBB08006-F60S1XX3WSM	1.173(29.80)	.913(23.20)	.988(25.10)	1.110(28.20)
80	FBB08006-F80S1XX3WSM	1.488(37.80)	1.228(31.20)	1.303(33.10)	1.425(36.20)
100	FBB08006-F100S1XX3WSM	1.803(45.80)	1.543(39.20)	1.618(41.10)	1.740(44.20)
120	FBB08006-F120S1XX3WSM	2.118(53.80)	1.858(47.20)	1.933(49.10)	2.055(52.20)

FBB 080 06 — F XX S 1 XX 3 W S M
 1 2 3 4 5 6 7 8 9 10 11
 10 11 12 13 14 15 16 17 18 19 20 21

Ordering Information



Recommended P.C.B Layout(Top Side)
 (PCB Board Tolerance±0.05)

1	2	3	4	5	6	7	8
Category	FBB-Board To Board	Series Number	Distinction No.	Type	Circuits	Entry Angle	Packaging
1	080	06	F	XX	S	1	XX
2	080	06	—	F	XX	S	1
3	080	06	—	F	XX	S	1
4	080	06	—	F	XX	S	1
5	080	06	—	F	XX	S	1
6	080	06	—	F	XX	S	1
7	080	06	—	F	XX	S	1
8	080	06	—	F	XX	S	1

THIRD ANGLE	PROJECTION	DESIGN UNITS	SCALE	GENERAL TOLERANCES	APPROVE BY	DATE	PART NO.	ITEM NO.
◎	第三角	X.±.012(0.30) X.X±.008(0.20) X.XX±.006(0.15)	5:1 A4	(UNLESS SPECIFIED) X.±.5 X.X±.2 X.XX±.05	FRANK	14/AUG/19	FBB08006-FXXS1XX3WSM	FBB08006
					CHECKED BY	DATE	TITLE	
					CHERRY	14/AUG/19	Board to Board Pitch 0.8mm 180° Vertical (SMT)	
					DRAWN BY	DATE	THIS DRAWING CONTAINS INFORMATION THAT IS PROPRIETARY TO TXGA INDUSTRIAL ELECTRONICS(SZ)CO.,LTD AND SHOULD NOT BE USED WITHOUT WRITTEN PERMISSION	
					ZOEY	14/AUG/19		



Leader Of Industry

REV 0

DATE

DESCRIPTION

LOCATIONS

REV

APPD

8

7

6

5

4

3

2

1

F

F

E

E

D

D

C

C

B

B

A

A

X-ON Electronics

Largest Supplier of Electrical and Electronic Components

Click to view similar products for [Board to Board & Mezzanine Connectors](#) category:

Click to view products by [TXGA](#) manufacturer:

Other Similar products are found below :

[10135583-642402LF](#) [89885-310LF](#) [589158040000018](#) [6-1393048-0](#) [68683-613](#) [MDF7-12DP-2.54DSA](#) [MDF7-18P-2.54DSA\(01\)](#) [MDF7-20DP-2.54DSA](#) [MDF7-26D-2.54DSA\(55\)](#) [MDF7-3P-2.54DSA\(01\)](#) [MDF7B-20P-2.54DSA\(01\)](#) [MDF7B-3P-2.54DSA\(55\)](#) [MDF7C-11P-2.54DSA\(55\)](#) [MDF7C-18P-2.54DSA\(55\)](#) [MDF7C-5P-2.54DSA\(01\)](#) [MDF7P-5P-2.54DSA\(55\)](#) [75234-0516](#) [FCN-230C068-11](#) [FCN-268F012-G/BD](#) [FCN-268F036-G/BD](#) [FCN-268M012-G/0D](#) [FCN-268M024-G/1D](#) [FCN-360C008-C](#) [FCN-360C040-C](#) [FCN-723J004/1](#) [MIS-048-01-F-D-DP-K](#) [832-10-034-10-001000](#) [93696-325LF](#) [11828-1FA](#) [AXK630345P](#) [18097-0013](#) [ICA-328STT](#) [2007042-2](#) [304400-2](#) [FCN-214Q030-G/0](#) [FCN-215Q040-G/0](#) [FCN-230C068-ESA](#) [FCN-234P048-G/0](#) [FCN-235D050-G/C](#) [FCN-360A3](#) [FCN-360C040-B](#) [210-93-314-41-105000](#) [2-22603-0](#) [379-064-521-202](#) [MDF7-12P-2.54DSA\(01\)](#) [MDF7-16P-2.54DS\(56\)](#) [MDF7-40DP-2.54DSA\(55\)](#) [MDF7-8P-2.54DSA\(55\)](#) [MDF7B-16P-2.54DSA\(55\)](#) [AXG720047](#)