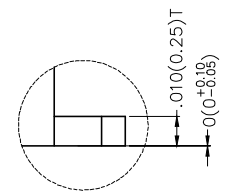
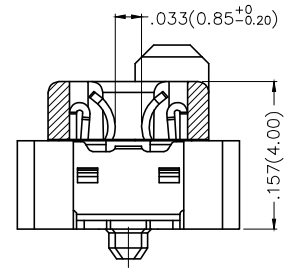
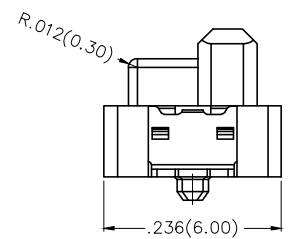
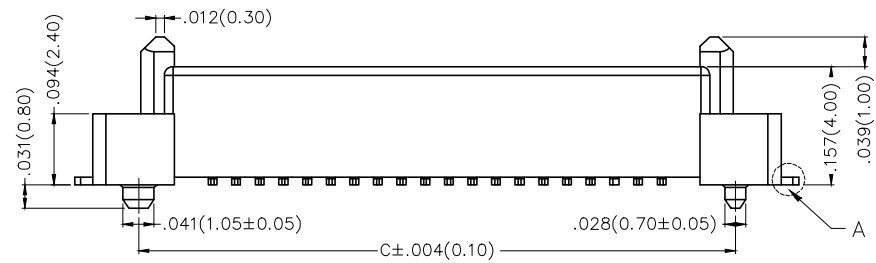
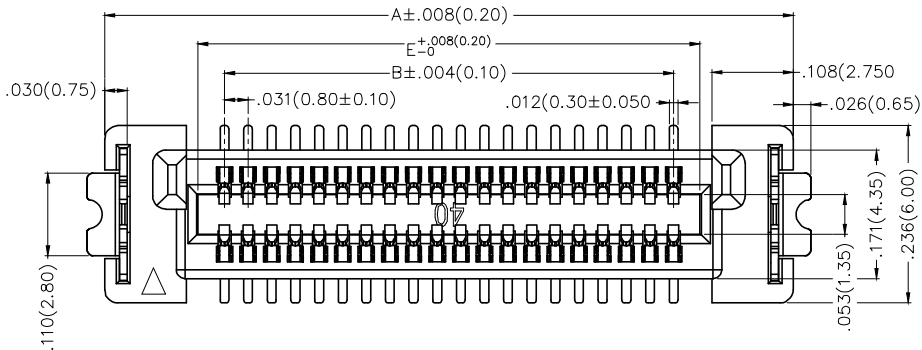


| REV | LOCATIONS | DESCRIPTION | DATE | REVISER | APPD |
|-----|-----------|-------------|------|---------|------|
|     |           |             |      |         |      |

**SPECIFICATIONS**

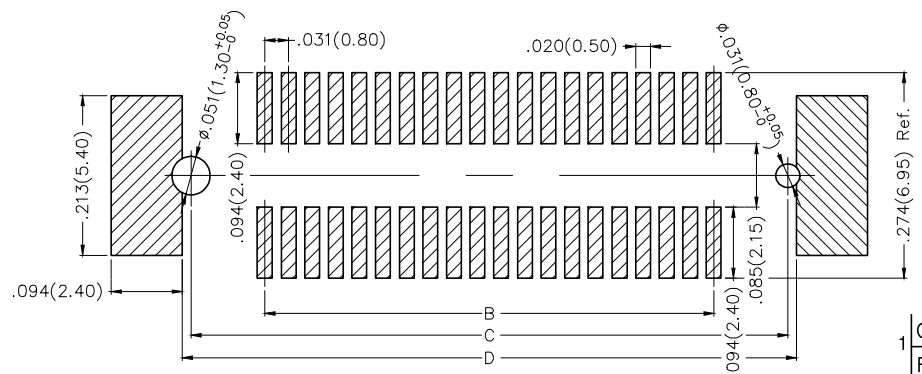
**Electrical**  
 Current Rating: 0.5A AC(rms)/DC  
 Voltage Rating: 50V AC(rms)/DC  
 Contact Resistance: 50 mΩ Max.  
 Insulation Resistance: 100 MΩ Min.  
 Withstanding Voltage: 200V AC r.m.s  
 Temperature Range—Operating: -35°C~+85°C

**Material and Plating**  
 Housing: LCP (UL 94V-0)  
 Contacts: Phosphor Bronze/ Selective gold in contact area, tin on tail



Scale 1.25:1

Detail 'A'  
Scale 8:1



Recommended P.C.Board Layout  
 General Tolerances: ±0.05mm

**Ordering Information**

FBB 080 08 — F XX S 3 XX 3 K6 M  
 1 2 3 4 5 6 7 8 9 10 11



|  |  |                           |                            |                        |                                  |
|--|--|---------------------------|----------------------------|------------------------|----------------------------------|
| 1 Category<br>FBB—Board to Board                           | 2 Series Number<br>080—Pitch0.80mm   | 3 Distinction No.<br>08   | 4 Type<br>F—Female         | 5 Circuits<br>XX       | 6 Entry Angle<br>S—180° Vertical |
| 7 Plating<br>3—Selective gold in contact area, tin on tail | 8 Thickness of Plating<br>00—Gold flash<br>03—3μ<br>Custom plate available | 9 Material—Resin<br>3—LCP | 10 Color—Resin<br>K6—Black | 11 Packaging<br>M—Reel |                                  |

|                               |                                       |                  |                      |                   |  |                      |                        |
|-------------------------------|---------------------------------------|------------------|----------------------|-------------------|--|----------------------|------------------------|
| <br>THIRD ANGLE PROJECTION    | GENERAL TOLERANCES (UNLESS SPECIFIED) |                  | APPROVE BY<br>FRANK  | DATE<br>21/AUG/19 | PART NO.<br>FBB08008—FXXS3XX3K6M   | ITEM NO.<br>FBB08008 | <br>Leader Of Industry |
|                               | X.±.012(0.30)                         | X.±5°            | CHECKED BY<br>CHERRY | DATE<br>21/AUG/19 | TITLE<br>Board to Board<br>Pitch 0.8mm 180° Vertical (SMT)   |                      |                        |
| DESIGN UNITS<br>Inch (metric) | X.X±.008(0.20)                        | X.±2°            | DRAWN BY<br>KATE     | DATE<br>21/AUG/19 | THIS DRAWING CONTAINS INFORMATION THAT IS PROPRIETARY TO TXGA INDUSTRIAL ELECTRONICS(S.Z)CO.,LTD AND SHOULD NOT BE USED WITHOUT WRITTEN PERMISSION |                      |                        |
| SCALE<br>5:1                  | SIZE<br>A4                            | X.XX±.006(0.15)  | X.X±1°               |                   |  |                      |                        |
|                               |                                       | X.XXX±.004(0.10) | X.XX±0.5°            |                   |  |                      |                        |

1 2 3 4 5 6 7 8

| REV | LOCATIONS | DESCRIPTION | DATE | REVISER | APPD |
|-----|-----------|-------------|------|---------|------|
|     |           |             |      |         |      |

| Circuits (n) | Part No.              | Dimensions(in./mm) |              |              |              |              |
|--------------|-----------------------|--------------------|--------------|--------------|--------------|--------------|
|              |                       | A                  | B            | C            | D            | E            |
| 40           | FBB08008-F40S3XX3K6M  | .917(23.30)        | .598(15.20)  | .795(20.20)  | .819(20.80)  | .665(16.90)  |
| 50           | FBB08008-F50S3XX3K6M  | 1.075(27.30)       | .756(19.20)  | .953(24.20)  | .976(24.80)  | .823(20.90)  |
| 60           | FBB08008-F60S3XX3K6M  | 1.232(31.30)       | .913(23.20)  | 1.110(28.20) | 1.134(28.80) | .980(24.90)  |
| 70           | FBB08008-F70S3XX3K6M  | 1.390(35.30)       | 1.071(27.20) | 1.268(32.20) | 1.291(32.80) | 1.138(28.90) |
| 80           | FBB08008-F80S3XX3K6M  | 1.547(39.30)       | 1.228(31.20) | 1.425(36.20) | 1.449(36.80) | 1.295(32.90) |
| 100          | FBB08008-F100S3XX3K6M | 1.862(47.30)       | 1.543(39.20) | 1.740(44.20) | 1.764(44.80) | 1.610(40.90) |

|  |                                       |                 |                     |                      |                                  |  |   |       |               |
|--|---------------------------------------|-----------------|---------------------|----------------------|----------------------------------|--|---|-------|---------------|
| <br>THIRD ANGLE PROJECTION | GENERAL TOLERANCES (UNLESS SPECIFIED) |                 | APPROVE BY<br>FRANK | DATE<br>21/AUG/19    | PART NO.<br>FBB08008-FXXS3XX3K6M | ITEM NO.<br>FBB08008   | <br>Leader Of Industry |       |               |
|  | DESIGN UNITS<br>Inch (metric)         | X.±.012(0.30)   | X.±5'               | CHECKED BY<br>CHERRY | DATE<br>21/AUG/19                | TITLE<br>Board to Board<br>Pitch 0.8mm 180° Vertical (SMT)   |   | REV 0 | SHEET NO. 2/2 |
|  |                                       | X.XX±.006(0.15) | .XX'±1'             | DRAWN BY<br>KATE     | DATE<br>21/AUG/19                | THIS DRAWING CONTAINS INFORMATION THAT IS PROPRIETARY TO TXGA INDUSTRIAL ELECTRONICS(S.Z)CO.,LTD AND SHOULD NOT BE USED WITHOUT WRITTEN PERMISSION |   |       |               |
|  |                                       | SCALE<br>5:1    | SIZE<br>A4          | X.XXX±.004(0.10)     | .XXX'±0.5'                       |  |   |       |               |

1 2 3 4 5 6 7 8

## X-ON Electronics

Largest Supplier of Electrical and Electronic Components

*Click to view similar products for [Board to Board & Mezzanine Connectors](#) category:*

*Click to view products by [TXGA](#) manufacturer:*

Other Similar products are found below :

[10135583-642402LF](#) [89885-310LF](#) [589158040000018](#) [6-1393048-0](#) [68683-613](#) [MDF7-12DP-2.54DSA](#) [MDF7-18P-2.54DSA\(01\)](#) [MDF7-20DP-2.54DSA](#) [MDF7-26D-2.54DSA\(55\)](#) [MDF7-3P-2.54DSA\(01\)](#) [MDF7B-20P-2.54DSA\(01\)](#) [MDF7B-3P-2.54DSA\(55\)](#) [MDF7C-11P-2.54DSA\(55\)](#) [MDF7C-18P-2.54DSA\(55\)](#) [MDF7C-5P-2.54DSA\(01\)](#) [MDF7P-5P-2.54DSA\(55\)](#) [75234-0516](#) [FCN-230C068-11](#) [FCN-268F012-G/BD](#) [FCN-268F036-G/BD](#) [FCN-268M012-G/0D](#) [FCN-268M024-G/1D](#) [FCN-360C008-C](#) [FCN-360C040-C](#) [FCN-723J004/1](#) [MIS-048-01-F-D-DP-K](#) [832-10-034-10-001000](#) [93696-325LF](#) [11828-1FA](#) [AXK630345P](#) [18097-0013](#) [ICA-328STT](#) [2007042-2](#) [304400-2](#) [FCN-214Q030-G/0](#) [FCN-215Q040-G/0](#) [FCN-230C068-ESA](#) [FCN-234P048-G/0](#) [FCN-235D050-G/C](#) [FCN-360A3](#) [FCN-360C040-B](#) [210-93-314-41-105000](#) [2-22603-0](#) [379-064-521-202](#) [MDF7-12P-2.54DSA\(01\)](#) [MDF7-16P-2.54DS\(56\)](#) [MDF7-40DP-2.54DSA\(55\)](#) [MDF7-8P-2.54DSA\(55\)](#) [MDF7B-16P-2.54DSA\(55\)](#) [AXG720047](#)