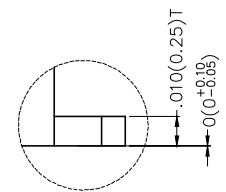
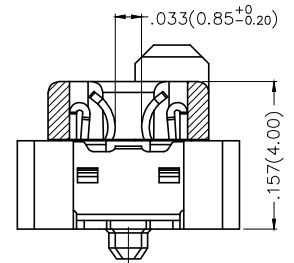
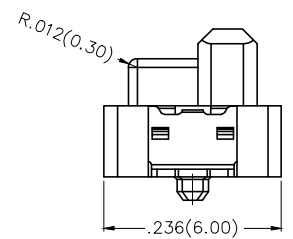
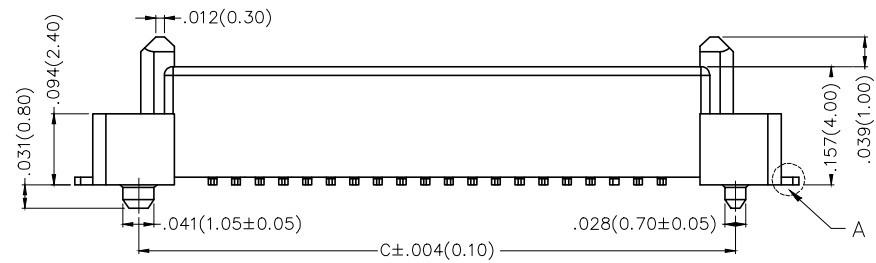
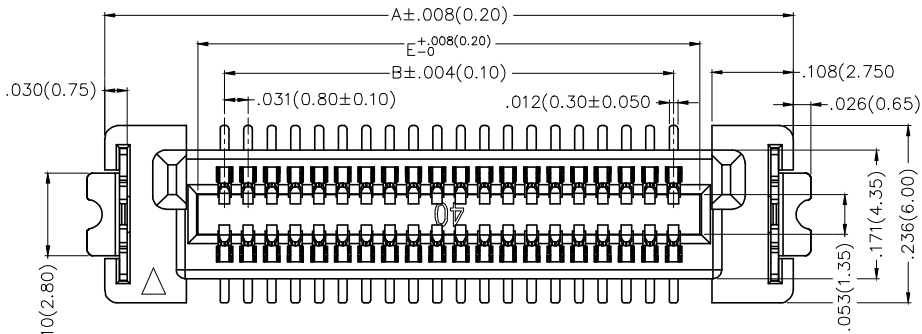


REV	LOCATIONS	DESCRIPTION	DATE	REVISER	APPD

SPECIFICATIONS

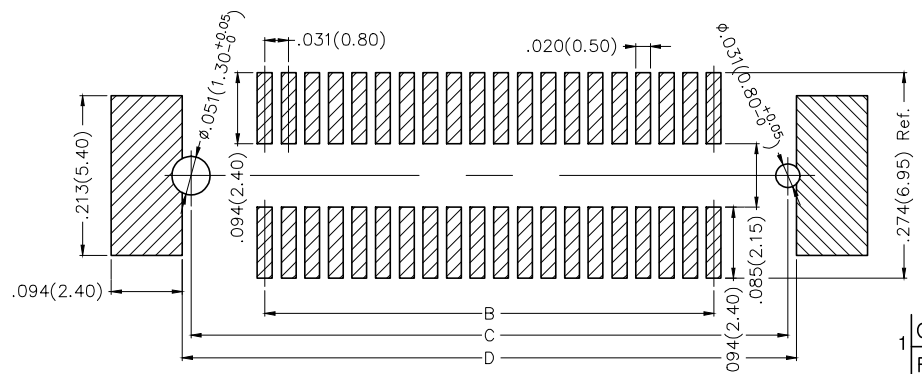
Electrical
 Current Rating: 0.5A AC(rms)/DC
 Voltage Rating: 50V AC(rms)/DC
 Contact Resistance: 50 mΩ Max.
 Insulation Resistance: 100 MΩ Min.
 Withstanding Voltage: 200V AC r.m.s
 Temperature Range-Operating: -35°C~+85°C

Material and Plating
 Housing: LCP (UL 94V-0)
 Contacts: Phosphor Bronze/ Selective gold in contact area, tin on tail



Scale 1.25:1

Detail 'A'
Scale 8:1



Recommended P.C.Board Layout
 General Tolerances: ±0.05mm

Ordering Information

FBB 080 08 — F XX S 3 XX 3 K6 M
 1 2 3 4 5 6 7 8 9 10 11

1 Category FBB-Board to Board	2 Series Number 080-Pitch0.80mm	3 Distinction No. 08	4 Type F-Female	5 Circuits XX	6 Entry Angle S-180° Vertical
7 Plating 3-Selective gold in contact area, tin on tail	8 Thickness of Plating 00-Gold flash 03-3μ Custom plate available	9 Material-Resin 3-LCP	10 Color-Resin K6-Black	11 Packaging M-Reel	

<p>THIRD ANGLE PROJECTION</p>	GENERAL TOLERANCES (UNLESS SPECIFIED)		APPROVE BY FRANK	DATE 21/AUG/19	PART NO. FBB08008-FXXS3XX3K6M	ITEM NO. FBB08008	<p>Leader Of Industry</p>
	DESIGN UNITS Inch (metric)	X.±.012(0.30) X.X±.008(0.20) X.XX±.006(0.15) X.XXX±.004(0.10)	X.±5° .X'±2" .XX'±1" .XXX'±0.5"	CHECKED BY CHERRY	DATE 21/AUG/19	TITLE Board to Board Pitch 0.8mm 180° Vertical (SMT)	
SCALE 5:1	SIZE A4		DRAWN BY KATE	DATE 21/AUG/19	THIS DRAWING CONTAINS INFORMATION THAT IS PROPRIETARY TO TXGA INDUSTRIAL ELECTRONICS(S.Z)CO.,LTD AND SHOULD NOT BE USED WITHOUT WRITTEN PERMISSION		

1 2 3 4 5 6 7 8

REV	LOCATIONS	DESCRIPTION	DATE	REVISER	APPD

A

B

C

D

E

F

A

B



C

D

E

F

Circuits (n)	Part No.	Dimensions(in./mm)				
		A	B	C	D	E
40	FBB08008-F40S3XX3K6M	.917(23.30)	.598(15.20)	.795(20.20)	.819(20.80)	.665(16.90)
50	FBB08008-F50S3XX3K6M	1.075(27.30)	.756(19.20)	.953(24.20)	.976(24.80)	.823(20.90)
60	FBB08008-F60S3XX3K6M	1.232(31.30)	.913(23.20)	1.110(28.20)	1.134(28.80)	.980(24.90)
70	FBB08008-F70S3XX3K6M	1.390(35.30)	1.071(27.20)	1.268(32.20)	1.291(32.80)	1.138(28.90)
80	FBB08008-F80S3XX3K6M	1.547(39.30)	1.228(31.20)	1.425(36.20)	1.449(36.80)	1.295(32.90)
100	FBB08008-F100S3XX3K6M	1.862(47.30)	1.543(39.20)	1.740(44.20)	1.764(44.80)	1.610(40.90)

 THIRD ANGLE PROJECTION	GENERAL TOLERANCES (UNLESS SPECIFIED)		APPROVE BY FRANK	DATE 21/AUG/19	PART NO. FBB08008-FXXS3XX3K6M	ITEM NO. FBB08008	 Leader Of Industry	
	X.±.012(0.30)	X.±5'	CHECKED BY CHERRY	DATE 21/AUG/19	TITLE Board to Board Pitch 0.8mm 180° Vertical (SMT)			REV 0
	DESIGN UNITS Inch (metric)	X.X±.008(0.20)	.X'±2"	DRAWN BY KATE	DATE 21/AUG/19	THIS DRAWING CONTAINS INFORMATION THAT IS PROPRIETARY TO TXGA INDUSTRIAL ELECTRONICS(S.Z)CO.,LTD AND SHOULD NOT BE USED WITHOUT WRITTEN PERMISSION		
	SCALE 5:1	SIZE A4	X.XX±.006(0.15)	.XX'±1"	X.XXX±.004(0.10)	.XXX'±0.5'		

1 2 3 4 5 6 7 8

X-ON Electronics

Largest Supplier of Electrical and Electronic Components

Click to view similar products for [Board to Board & Mezzanine Connectors](#) category:

Click to view products by [TXGA](#) manufacturer:

Other Similar products are found below :

[10135583-642402LF](#) [89885-310LF](#) [589158040000018](#) [6-1393048-0](#) [68683-613](#) [MDF7-12DP-2.54DSA](#) [MDF7-18P-2.54DSA\(01\)](#) [MDF7-20DP-2.54DSA](#) [MDF7-26D-2.54DSA\(55\)](#) [MDF7-3P-2.54DSA\(01\)](#) [MDF7B-20P-2.54DSA\(01\)](#) [MDF7B-3P-2.54DSA\(55\)](#) [MDF7C-11P-2.54DSA\(55\)](#) [MDF7C-18P-2.54DSA\(55\)](#) [MDF7C-5P-2.54DSA\(01\)](#) [MDF7P-5P-2.54DSA\(55\)](#) [75234-0516](#) [FCN-230C068-11](#) [FCN-268F012-G/BD](#) [FCN-268F036-G/BD](#) [FCN-268M012-G/0D](#) [FCN-268M024-G/1D](#) [FCN-360C008-C](#) [FCN-360C040-C](#) [FCN-723J004/1](#) [MIS-048-01-F-D-DP-K](#) [832-10-034-10-001000](#) [93696-325LF](#) [11828-1FA](#) [AXK630345P](#) [18097-0013](#) [ICA-328STT](#) [2007042-2](#) [304400-2](#) [FCN-214Q030-G/0](#) [FCN-215Q040-G/0](#) [FCN-230C068-ESA](#) [FCN-234P048-G/0](#) [FCN-235D050-G/C](#) [FCN-360A3](#) [FCN-360C040-B](#) [210-93-314-41-105000](#) [2-22603-0](#) [379-064-521-202](#) [MDF7-12P-2.54DSA\(01\)](#) [MDF7-16P-2.54DS\(56\)](#) [MDF7-40DP-2.54DSA\(55\)](#) [MDF7-8P-2.54DSA\(55\)](#) [MDF7B-16P-2.54DSA\(55\)](#) [AXG720047](#)