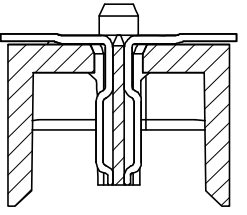


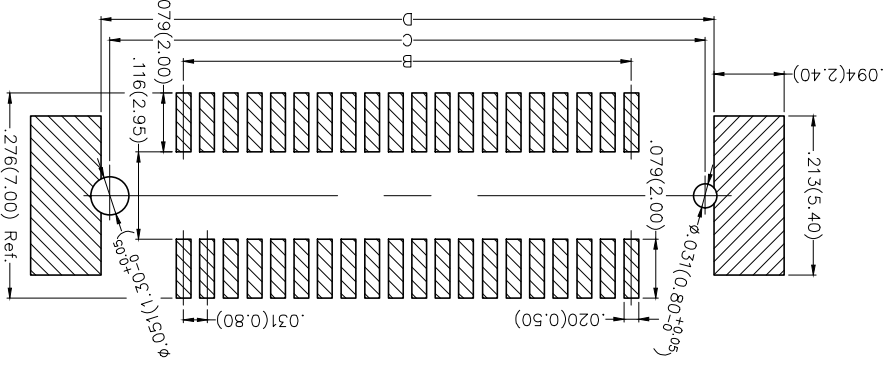
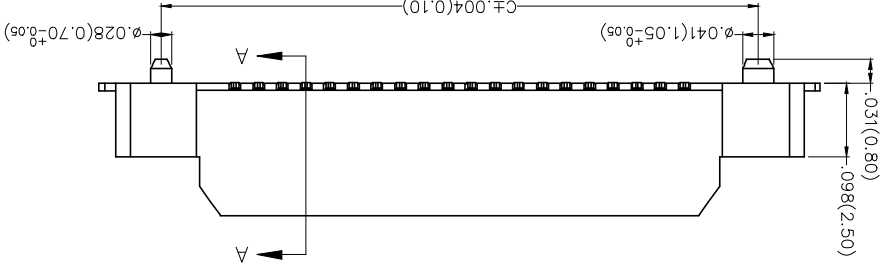
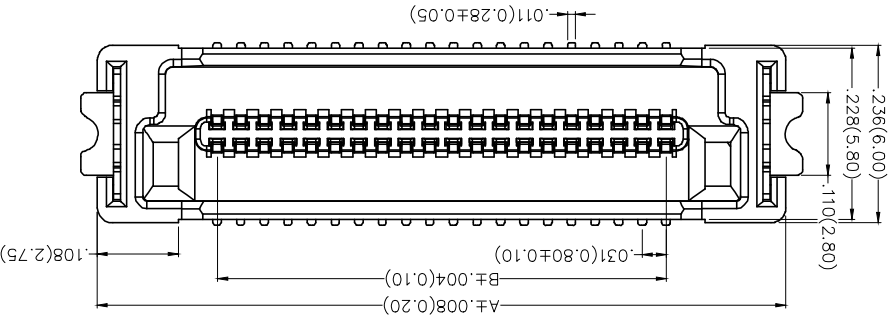
REV	LOCATIONS	DESCRIPTION	DATE	REVISER	APPD

SPECIFICATIONS

Electrical
 Current Rating: 0.5A AC(rms)/DC
 Voltage Rating: 50V AC(rms)/DC
 Contact Resistance: 50 mΩ Max.
 Insulation Resistance: 100 MΩ Min.
 Withstanding Voltage: 200V AC r.m.s.
 Temperature Range-Operating: -35°C~+85°C
Material and Plating
 Housing: LCP (UL 94V-0)
 Contacts: Phosphor Bronze/ Selective gold in
 contact area, tin on tail



Section A-A
 Scale 1.25:1



Recommended P.C.Board Layout
 General Tolerances: ±0.05mm

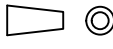
Ordering Information
 FBB 080 08 - M XX S 3 XX 3 K6 M

1	Category	FBB-Board to Board
2	Series Number	080-Pitch:0.80mm
3	Distinction No.	08
4	Type	M-Male
5	Circuits	XX
6	Entry Angle	S-180° Vertical
7	Plating	3-Selective gold in contact area, tin on tail
8	Thickness of Plating	00-Gold flash 03-3μ Custom plate available
9	Material-Resin	3-LCP
10	Color-Resin	K6-Black
11	Packaging	M-Reel

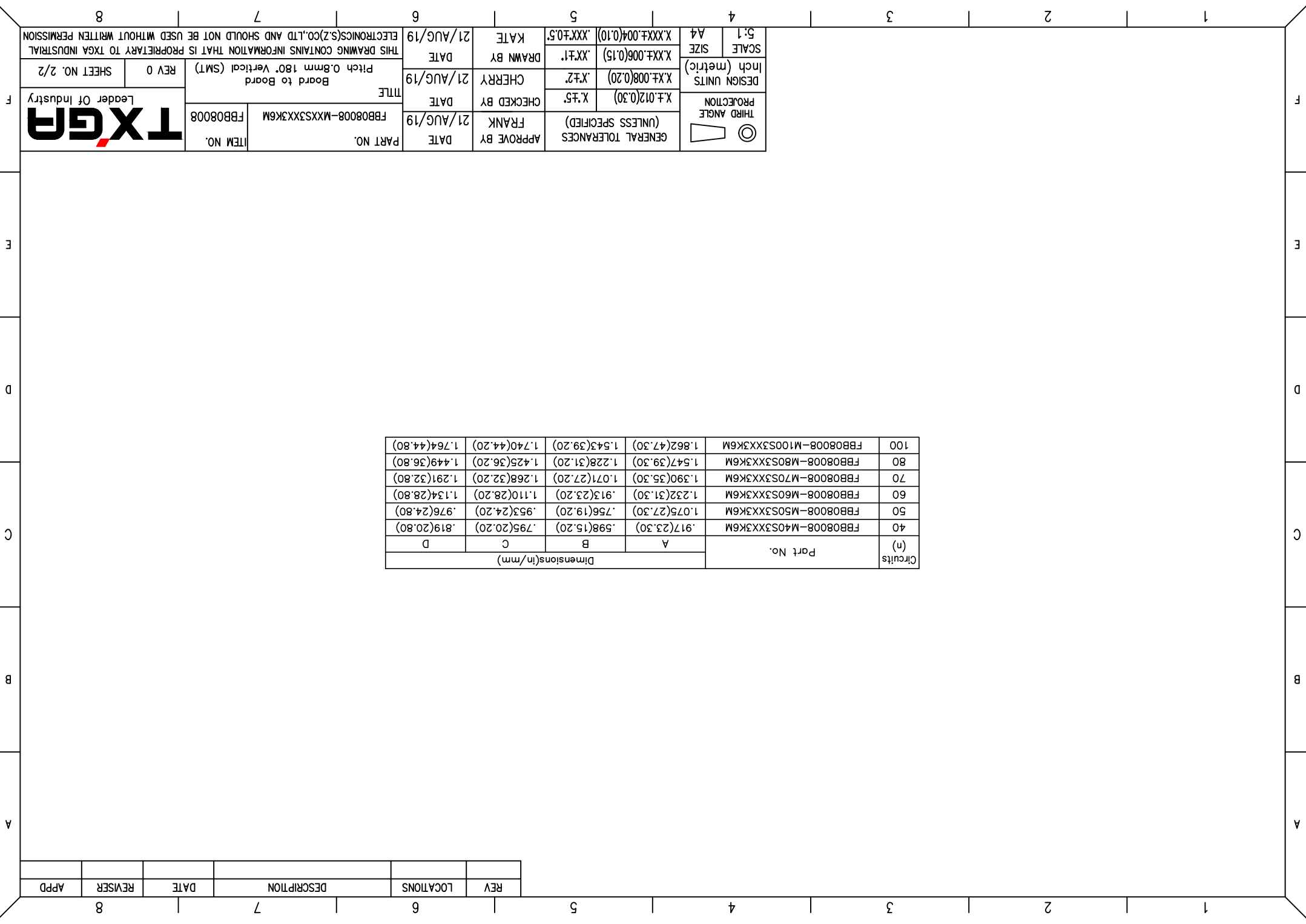
THIRD ANGLE PROJECTION	DESIGN UNITS	X.XX±.012(0.30)	X.XX±.012(0.30)	DATE	21/AUG/19	APPROVE BY	FRANK	DATE	21/AUG/19	PART NO.	FBB08008-MXXS3XX3K6M	ITEM NO.	FBB08008
	Inch (metric)	X.XX±.008(0.20)	X.XX±.008(0.20)	CHECKED BY	CHERRY	DATE	21/AUG/19	TITLE	Board to Board Pitch 0.8mm 180° Vertical (SMT)	REV 0	SHEET NO. 1/2		
SCALE	SIZE	A4	5:1	DRAWN BY	KATE	DATE	21/AUG/19	THIS DRAWING CONTAINS INFORMATION THAT IS PROPRIETARY TO TXGA INDUSTRIAL ELECTRONICS(SZ)CO.,LTD AND SHOULD NOT BE USED WITHOUT WRITTEN PERMISSION					



Circuits (n)	Part No.	Dimensions(in/mm)			
		A	B	C	D
40	FB08008-M40S3XX3K6M	.917(23.30)	.598(15.20)	.795(20.20)	.819(20.80)
50	FB08008-M50S3XX3K6M	1.075(27.30)	.756(19.20)	.953(24.20)	.976(24.80)
60	FB08008-M60S3XX3K6M	1.232(31.30)	.913(23.20)	1.110(28.20)	1.134(28.80)
70	FB08008-M70S3XX3K6M	1.390(35.30)	1.071(27.20)	1.268(32.20)	1.291(32.80)
80	FB08008-M80S3XX3K6M	1.547(39.30)	1.228(31.20)	1.425(36.20)	1.449(36.80)
100	FB08008-M100S3XX3K6M	1.862(47.30)	1.543(39.20)	1.740(44.20)	1.764(44.80)

 THIRD ANGLE PROJECTION	DESIGN UNITS	X.75	APPROVE BY	FRANK	DATE	21/AUG/19	PART NO.	FB08008-MXXX3XX3K6M	ITEM NO.	FB08008
	Inch (metric)	X.XX±.008(0.20)	CHECKED BY	CHEERY	DATE	21/AUG/19	TITLE	Board to Board	REV 0	SHEET NO. 2/2
SCALE	5:1	SIZE	A4	DRAWN BY	KATE	DATE	21/AUG/19	THIS DRAWING CONTAINS INFORMATION THAT IS PROPRIETARY TO TXGA INDUSTRIAL ELECTRONICS(SZ)CO.,LTD AND SHOULD NOT BE USED WITHOUT WRITTEN PERMISSION		
GENERAL TOLERANCES (UNLESS SPECIFIED)		X.75	X.XX±.05		X.XX±.004(0.10)		ELECTRONICS(SZ)CO.,LTD AND SHOULD NOT BE USED WITHOUT WRITTEN PERMISSION			

APD	REVISER	DATE	DESCRIPTION	LOCATIONS	REV
-----	---------	------	-------------	-----------	-----



X-ON Electronics

Largest Supplier of Electrical and Electronic Components

Click to view similar products for [Board to Board & Mezzanine Connectors](#) category:

Click to view products by [TXGA](#) manufacturer:

Other Similar products are found below :

[10135583-642402LF](#) [89885-310LF](#) [589158040000018](#) [6-1393048-0](#) [68683-613](#) [MDF7-12DP-2.54DSA](#) [MDF7-18P-2.54DSA\(01\)](#) [MDF7-20DP-2.54DSA](#) [MDF7-26D-2.54DSA\(55\)](#) [MDF7-3P-2.54DSA\(01\)](#) [MDF7B-20P-2.54DSA\(01\)](#) [MDF7B-3P-2.54DSA\(55\)](#) [MDF7C-11P-2.54DSA\(55\)](#) [MDF7C-18P-2.54DSA\(55\)](#) [MDF7C-5P-2.54DSA\(01\)](#) [MDF7P-5P-2.54DSA\(55\)](#) [75234-0516](#) [FCN-230C068-11](#) [FCN-268F012-G/BD](#) [FCN-268F036-G/BD](#) [FCN-268M012-G/0D](#) [FCN-268M024-G/1D](#) [FCN-360C008-C](#) [FCN-360C040-C](#) [FCN-723J004/1](#) [MIS-048-01-F-D-DP-K](#) [832-10-034-10-001000](#) [93696-325LF](#) [11828-1FA](#) [AXK630345P](#) [18097-0013](#) [ICA-328STT](#) [2007042-2](#) [304400-2](#) [FCN-214Q030-G/0](#) [FCN-215Q040-G/0](#) [FCN-230C068-ESA](#) [FCN-234P048-G/0](#) [FCN-235D050-G/C](#) [FCN-360A3](#) [FCN-360C040-B](#) [210-93-314-41-105000](#) [2-22603-0](#) [379-064-521-202](#) [MDF7-12P-2.54DSA\(01\)](#) [MDF7-16P-2.54DS\(56\)](#) [MDF7-40DP-2.54DSA\(55\)](#) [MDF7-8P-2.54DSA\(55\)](#) [MDF7B-16P-2.54DSA\(55\)](#) [AXG720047](#)