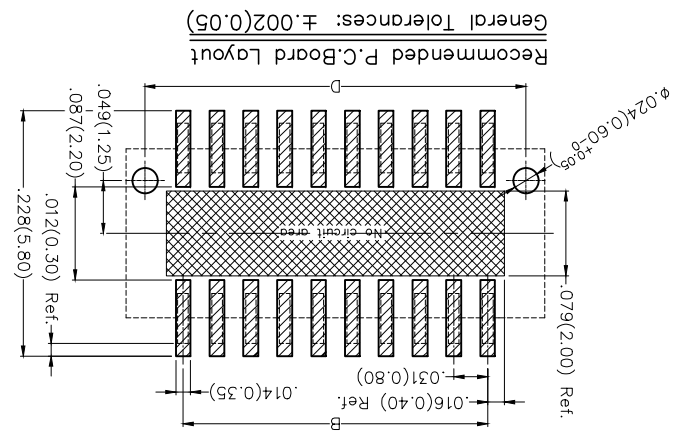
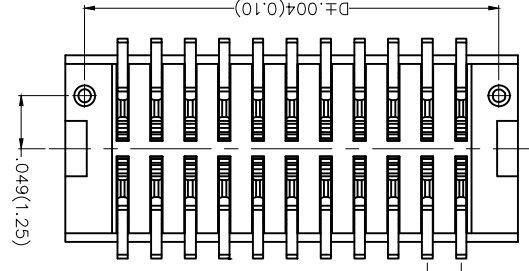
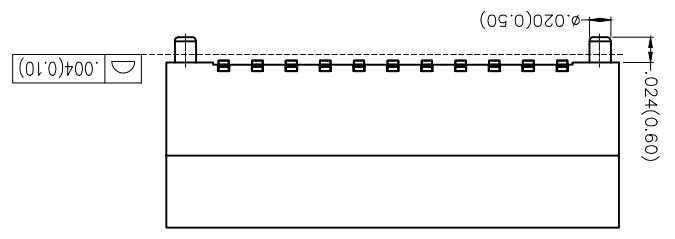
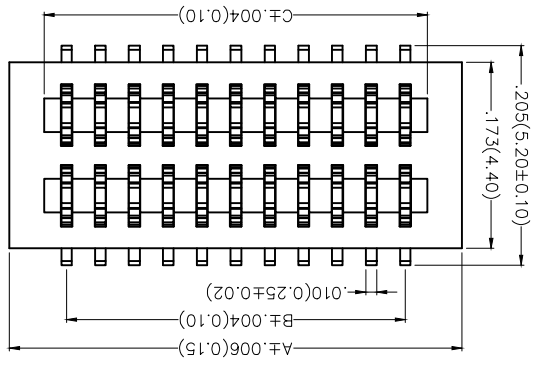
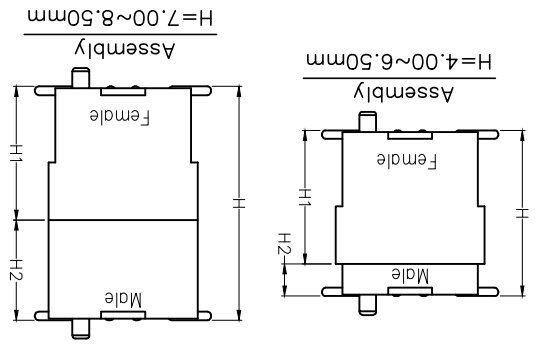


REV	LOCATIONS	DESCRIPTION	DATE	REVISER	APPD

**SPECIFICATIONS**

Electrical  
 Current Rating: 0.5A AC(rms)/DC  
 Voltage Rating: 50V AC(rms)/DC  
 Contact Resistance: 50 mΩ Max.  
 Insulation Resistance: 100 MΩ Min.  
 Withstanding Voltage: 200V AC r.m.s  
 Temperature Range—Operating: -30°C~+80°C  
 Material and Plating  
 Housing: PA9T (UL 94V-0)  
 Contacts: Phosphor Bronze/ Gold Plated



Dimensions(in/mm)		Male H1		Male H2		Male E	
Height H	.157(4.00)	.118(3.00)	.118(3.00)	.039(1.00)	.157(4.00)	.118(3.00)	.039(1.00)
Female H	.197(5.00)	.138(3.50)	.138(3.50)	.039(1.00)	.197(5.00)	.138(3.50)	.039(1.00)
Female H1	.217(5.50)	.138(3.50)	.138(3.50)	.079(2.00)	.217(5.50)	.138(3.50)	.079(2.00)
Female H2	.256(6.50)	.157(4.00)	.157(4.00)	.039(1.00)	.256(6.50)	.157(4.00)	.039(1.00)
Female E	.276(7.00)	.118(3.00)	.118(3.00)	.079(2.00)	.276(7.00)	.118(3.00)	.079(2.00)
Female H1	.296(7.50)	.138(3.50)	.138(3.50)	.039(1.00)	.296(7.50)	.138(3.50)	.039(1.00)
Female H2	.335(8.50)	.177(4.50)	.177(4.50)	.079(2.00)	.335(8.50)	.177(4.50)	.079(2.00)

**Ordering Information**

1 Category | 2 Series Number | 3 Distinction No. | 4 Type | 5 Circuits | 6 Entry Angle | 7 Plating | 8 Thickness of Plating | 9 Material-Resin | 10 Color-Resin | 11 Packaging | 12 Female height

1 FBB-Board to Board | 2 080-Pitch0.80mm | 3 09 | 4 F-Female | 5 XX | 6 S-180° Vertical | 7 1-Gold Plated | 8 03-3µ Custom plate available | 9 5-PA9T | 10 K6-Black | 11 M-Reel | 12 H30-H1=3.00mm H35-H1=3.50mm

1	Category	2	Series Number	3	Distinction No.	4	Type	5	Circuits	6	Entry Angle
7	Plating	8	Thickness of Plating	9	Material-Resin	10	Color-Resin	11	Packaging	12	Female height

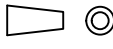
1	APPROVE BY	DATE	PART NO.	ITEM NO.
2	CHECKED BY	DATE	TITLE	
3	DRAWN BY	DATE	Board to Board	
4	SCALE	5:1	REV 0	SHEET NO. 1/2
5	DESIGN UNITS	Inch (metric)	Pitch 0.8mm 180° Vertical (SMT)	
6	THIRD ANGLE PROJECTION	THIRD ANGLE	Leader Of Industry	

1	GENERAL TOLERANCES (UNLESS SPECIFIED)	APPROVE BY	DATE	PART NO.	ITEM NO.
2	X.±.012(0.30)	FRANK	21/AUG/19	FBB08009-FXXS1X5K6MHXX	FBB08009
3	X.XX±.006(0.15)	CHEERY	21/AUG/19		
4	X.XX±.004(0.10)	KATE	21/AUG/19		
5	X.XX±.05				

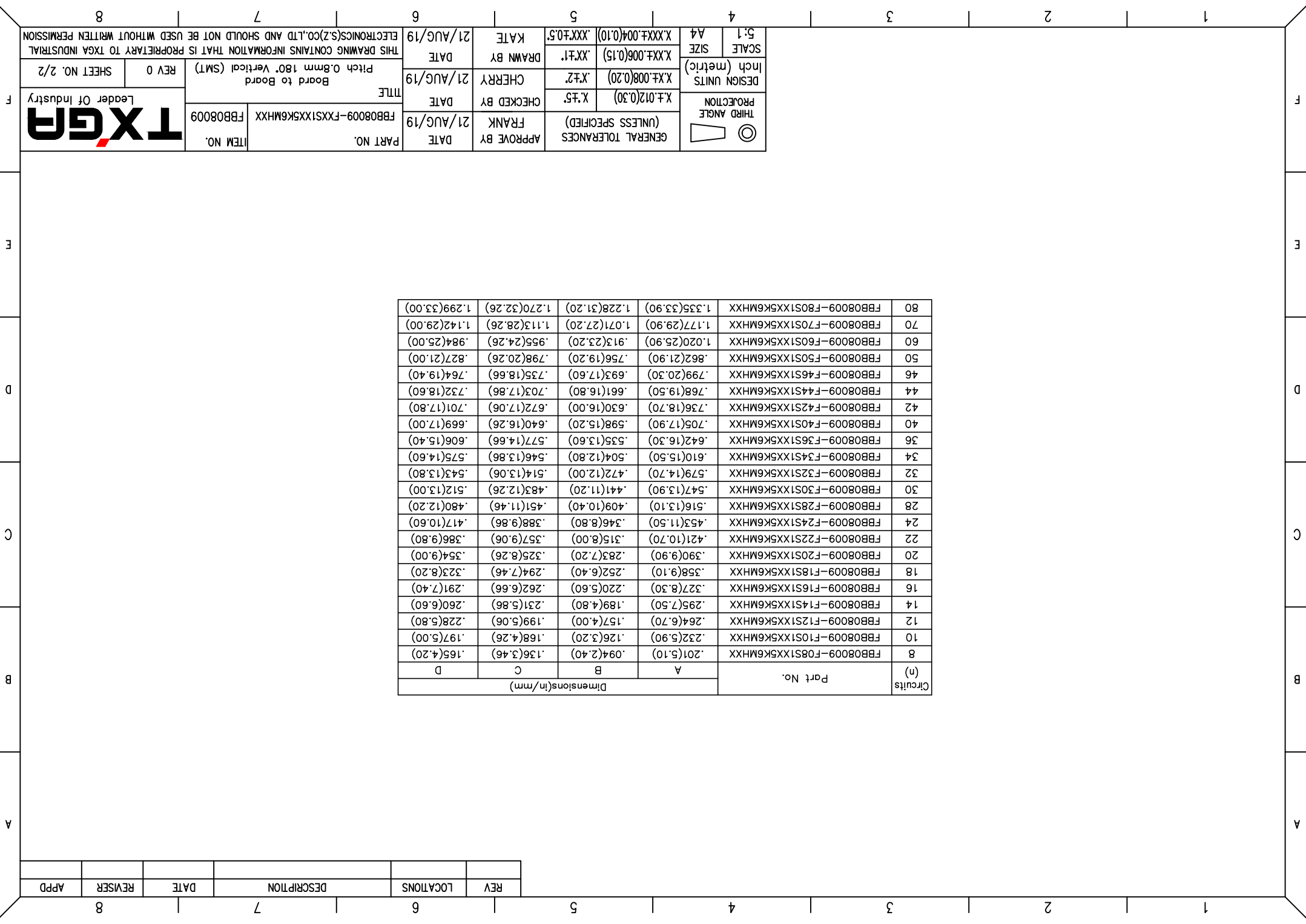
**TXGN**  
 Leader Of Industry

THIS DRAWING CONTAINS INFORMATION THAT IS PROPRIETARY TO TXGA INDUSTRIAL ELECTRONICS(SZ)CO.,LTD AND SHOULD NOT BE USED WITHOUT WRITTEN PERMISSION

Circuits (n)	Part No.	Dimensions(in/mm)		
		A	B	C
8	FB08009-F0851XX5K6MHXX	.201(5.10)	.094(2.40)	.136(3.46)
10	FB08009-F1051XX5K6MHXX	.232(5.90)	.126(3.20)	.168(4.26)
12	FB08009-F1251XX5K6MHXX	.264(6.70)	.157(4.00)	.199(5.06)
14	FB08009-F1451XX5K6MHXX	.295(7.50)	.189(4.80)	.231(5.86)
16	FB08009-F1651XX5K6MHXX	.327(8.30)	.220(5.60)	.262(6.66)
18	FB08009-F1851XX5K6MHXX	.358(9.10)	.252(6.40)	.294(7.46)
20	FB08009-F2051XX5K6MHXX	.390(9.90)	.283(7.20)	.325(8.26)
22	FB08009-F2251XX5K6MHXX	.421(10.70)	.315(8.00)	.357(9.06)
24	FB08009-F2451XX5K6MHXX	.453(11.50)	.346(8.80)	.388(9.86)
28	FB08009-F2851XX5K6MHXX	.516(13.10)	.409(10.40)	.451(11.46)
30	FB08009-F3051XX5K6MHXX	.547(13.90)	.441(11.20)	.483(12.26)
32	FB08009-F3251XX5K6MHXX	.579(14.70)	.472(12.00)	.514(13.06)
34	FB08009-F3451XX5K6MHXX	.610(15.50)	.504(12.80)	.546(13.86)
36	FB08009-F3651XX5K6MHXX	.642(16.30)	.535(13.60)	.577(14.66)
40	FB08009-F4051XX5K6MHXX	.705(17.90)	.598(15.20)	.640(16.26)
42	FB08009-F4251XX5K6MHXX	.736(18.70)	.630(16.00)	.672(17.06)
44	FB08009-F4451XX5K6MHXX	.768(19.50)	.661(16.80)	.703(17.86)
46	FB08009-F4651XX5K6MHXX	.799(20.30)	.693(17.60)	.735(18.66)
50	FB08009-F5051XX5K6MHXX	.862(21.90)	.756(19.20)	.798(20.26)
60	FB08009-F6051XX5K6MHXX	1.020(25.90)	.913(23.20)	.955(24.26)
70	FB08009-F7051XX5K6MHXX	1.177(29.90)	1.071(27.20)	1.113(28.26)
80	FB08009-F8051XX5K6MHXX	1.335(33.90)	1.228(31.20)	1.270(32.26)

 THIRD ANGLE PROJECTION	DESIGN UNITS	X.±.012(0.30)	X.±5.	APPROVE BY	FRANK	DATE	21/AUG/19	PART NO.	FB08009-FXXS1XX5K6MHXX	ITEM NO.	FB08009
	Inch (metric)	X.±.008(0.20)	X.±7.	CHECKED BY	CHEERY	DATE	21/AUG/19	TITLE	Board to Board	REV 0	SHEET NO. 2/2
SCALE	SIZE	X.XX±.006(0.15)	.XX±1.	DRAWN BY	KATE	DATE	21/AUG/19	THIS DRAWING CONTAINS INFORMATION THAT IS PROPRIETARY TO TXGA INDUSTRIAL ELECTRONICS(SZ)CO.,LTD AND SHOULD NOT BE USED WITHOUT WRITTEN PERMISSION			
5:1	A4	X.XX±.004(0.10)	.XX±0.5.								

REV	LOCATIONS	DESCRIPTION	DATE	REVISER	APPD



## X-ON Electronics

Largest Supplier of Electrical and Electronic Components

*Click to view similar products for [Board to Board & Mezzanine Connectors](#) category:*

*Click to view products by [TXGA](#) manufacturer:*

Other Similar products are found below :

[10135583-642402LF](#) [89885-310LF](#) [589158040000018](#) [6-1393048-0](#) [68683-613](#) [MDF7-12DP-2.54DSA](#) [MDF7-18P-2.54DSA\(01\)](#) [MDF7-20DP-2.54DSA](#) [MDF7-26D-2.54DSA\(55\)](#) [MDF7-3P-2.54DSA\(01\)](#) [MDF7B-20P-2.54DSA\(01\)](#) [MDF7B-3P-2.54DSA\(55\)](#) [MDF7C-11P-2.54DSA\(55\)](#) [MDF7C-18P-2.54DSA\(55\)](#) [MDF7C-5P-2.54DSA\(01\)](#) [MDF7P-5P-2.54DSA\(55\)](#) [75234-0516](#) [FCN-230C068-11](#) [FCN-268F012-G/BD](#) [FCN-268F036-G/BD](#) [FCN-268M012-G/0D](#) [FCN-268M024-G/1D](#) [FCN-360C008-C](#) [FCN-360C040-C](#) [FCN-723J004/1](#) [MIS-048-01-F-D-DP-K](#) [832-10-034-10-001000](#) [93696-325LF](#) [11828-1FA](#) [AXK630345P](#) [18097-0013](#) [ICA-328STT](#) [2007042-2](#) [304400-2](#) [FCN-214Q030-G/0](#) [FCN-215Q040-G/0](#) [FCN-230C068-ESA](#) [FCN-234P048-G/0](#) [FCN-235D050-G/C](#) [FCN-360A3](#) [FCN-360C040-B](#) [210-93-314-41-105000](#) [2-22603-0](#) [379-064-521-202](#) [MDF7-12P-2.54DSA\(01\)](#) [MDF7-16P-2.54DS\(56\)](#) [MDF7-40DP-2.54DSA\(55\)](#) [MDF7-8P-2.54DSA\(55\)](#) [MDF7B-16P-2.54DSA\(55\)](#) [AXG720047](#)