

REV	LOCATIONS	DESCRIPTION	DATE	REVISER	APPD

SPECIFICATIONS

Electrical
 Current Rating: 0.5A AC(rms)/DC
 Voltage Rating: 50V AC(rms)/DC
 Contact Resistance: 50 mΩ Max.
 Insulation Resistance: 100 MΩ Min.
 Withstanding Voltage: 200V AC r.m.s
 Temperature Range-Operating: -30°C~+80°C
 Material and Plating
 Housing: PA9T (UL 94V-0)
 Contacts: Phosphor Bronze/ Gold Plated

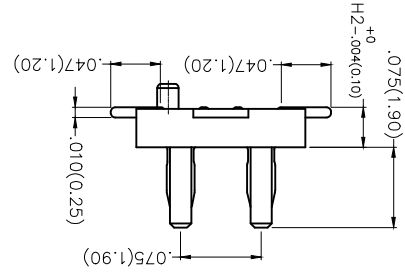
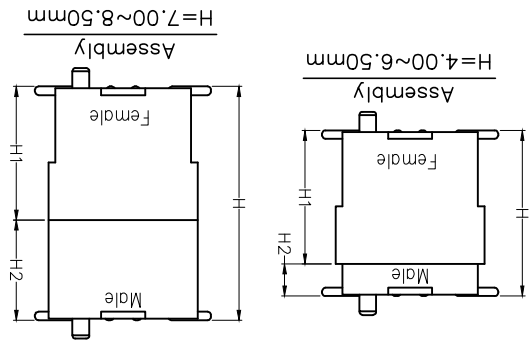
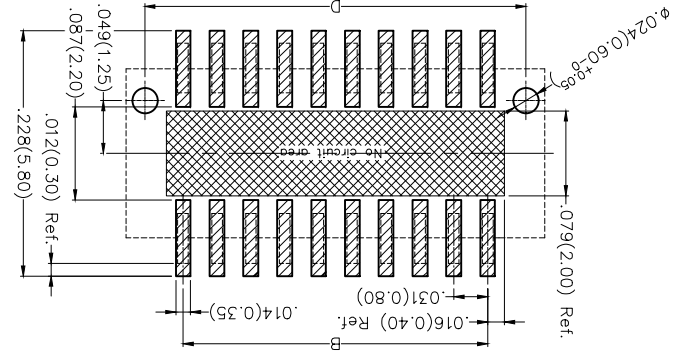
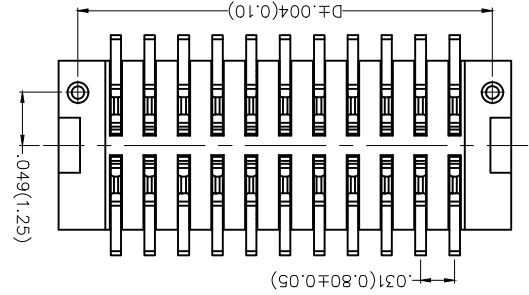
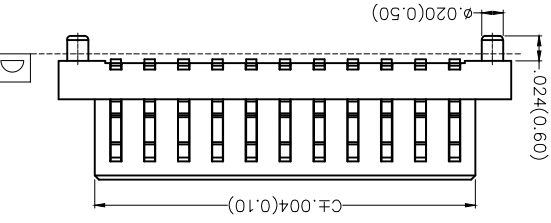
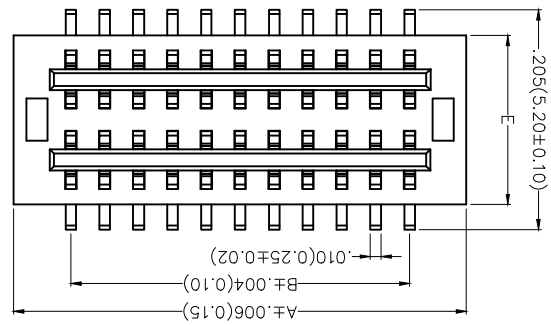
Dimensions(in/mm)	
Height H	.157(4.00)
Female H1	.118(3.00)
Male H2	.039(1.00)
	.177(4.50)
	.138(3.50)
	.118(3.00)
	.079(2.00)
	.039(1.00)
	.197(5.00)
	.138(3.50)
	.177(4.50)
	.039(1.00)
	.217(5.50)
	.138(3.50)
	.079(2.00)
	.177(4.50)
	.039(1.00)
	.236(6.00)
	.157(4.00)
	.079(2.00)
	.256(6.50)
	.177(4.50)
	.079(2.00)
	.276(7.00)
	.118(3.00)
	.157(4.00)
	.296(7.50)
	.138(3.50)
	.157(4.00)
	.315(8.00)
	.157(4.00)
	.335(8.50)

Ordering Information

1 Category | 2 Series Number | 3 Distinction No. | 4 Type | 5 Circuits | 6 Entry Angle | 7 Plating | 8 Thickness of Plating | 9 Material-Resin | 10 Color-Resin | 11 Packaging | 12 Male height


1	Category	FBB-Board to Board
2	Series Number	080-Pitch0.80mm
3	Distinction No.	09
4	Type	M-Male
5	Circuits	XX
6	Entry Angle	S-180° Vertical
7	Plating	1-Gold Plated
8	Thickness of Plating	03-3µ 01-1µ Custom plate available
9	Material-Resin	5-PA9T
10	Color-Resin	K6-Black
11	Packaging	M-Reel
12	Male height	H10-H2=1.00mm H20-H2=2.00mm H40-H2=4.00mm

APPROVE BY	DATE	PART NO.	ITEM NO.
FRANK	21/AUG/19	FB808009-MXXS1XXSK6MHXX	FB808009
CHECKED BY	DATE	TITLE	
CHERRY	21/AUG/19	Board to Board Pitch 0.8mm 180° Vertical (SMT)	
DRAWN BY	DATE	REV 0	SHEET NO. 1/2
KATE	21/AUG/19		
GENERAL TOLERANCES	(UNLESS SPECIFIED)		
X.±.012(0.30)			
X.XX±.006(0.15)			
X.XXX±.004(0.10)			
X.XXX±.05			
THIRD ANGLE PROJECTION			
DESIGN UNITS	Inch (metric)		
SCALE	5:1		
SIZE	A4		
THIS DRAWING CONTAINS INFORMATION THAT IS PROPRIETARY TO TXGA INDUSTRIAL ELECTRONICS(SZ)CO.,LTD AND SHOULD NOT BE USED WITHOUT WRITTEN PERMISSION			

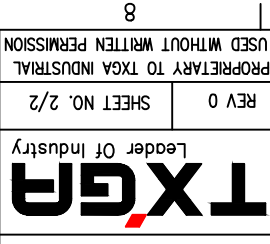


Recommended P.C.Board Layout
 General Tolerances: ±.002(0.05)

Circuits (n)	Part No.	Dimensions(in/mm)		
		A	B	C
8	FBF08009-M08S1XX5K6MHXX	.201(5.10)	.094(2.40)	.134(3.40)
10	FBF08009-M10S1XX5K6MHXX	.232(5.90)	.126(3.20)	.165(4.20)
12	FBF08009-M12S1XX5K6MHXX	.264(6.70)	.157(4.00)	.197(5.00)
14	FBF08009-M14S1XX5K6MHXX	.295(7.50)	.189(4.80)	.228(5.80)
16	FBF08009-M16S1XX5K6MHXX	.327(8.30)	.220(5.60)	.260(6.60)
18	FBF08009-M18S1XX5K6MHXX	.358(9.10)	.252(6.40)	.291(7.40)
20	FBF08009-M20S1XX5K6MHXX	.390(9.90)	.283(7.20)	.323(8.20)
22	FBF08009-M22S1XX5K6MHXX	.421(10.70)	.315(8.00)	.354(9.00)
24	FBF08009-M24S1XX5K6MHXX	.453(11.50)	.346(8.80)	.386(9.80)
28	FBF08009-M28S1XX5K6MHXX	.516(13.10)	.409(10.40)	.480(12.20)
30	FBF08009-M30S1XX5K6MHXX	.547(13.90)	.441(11.20)	.512(13.00)
32	FBF08009-M32S1XX5K6MHXX	.579(14.70)	.472(12.00)	.543(13.80)
34	FBF08009-M34S1XX5K6MHXX	.610(15.50)	.504(12.80)	.575(14.60)
36	FBF08009-M36S1XX5K6MHXX	.642(16.30)	.535(13.60)	.606(15.40)
40	FBF08009-M40S1XX5K6MHXX	.705(17.90)	.598(15.20)	.669(17.00)
42	FBF08009-M42S1XX5K6MHXX	.736(18.70)	.630(16.00)	.701(17.80)
44	FBF08009-M44S1XX5K6MHXX	.768(19.50)	.661(16.80)	.732(18.60)
46	FBF08009-M46S1XX5K6MHXX	.799(20.30)	.693(17.60)	.764(19.40)
50	FBF08009-M50S1XX5K6MHXX	.862(21.90)	.756(19.20)	.827(21.00)
60	FBF08009-M60S1XX5K6MHXX	1.020(25.90)	.913(23.20)	.984(25.00)
70	FBF08009-M70S1XX5K6MHXX	1.177(29.90)	1.071(27.20)	1.142(29.00)
80	FBF08009-M80S1XX5K6MHXX	1.335(33.90)	1.228(31.20)	1.299(33.00)

 THIRD ANGLE PROJECTION	DESIGN UNITS	X.±.012(0.30)	X.±5.	APPROVE BY	FRANK	DATE	21/AUG/19	PART NO.	FBF08009-MXXXS1XX5K6MHXX	ITEM NO.	FBF08009	
	Inch (metric)	X.±.008(0.20)	X.±7.	CHECKED BY	CHEERY	DATE	21/AUG/19	TITLE	Board to Board	Pitch 0.8mm 180° Vertical (SMT)	REV 0	SHEET NO. 2/2
SCALE	SIZE	X.XX±.006(0.15)	X.XX±1.	DRAWN BY	KATE	DATE	21/AUG/19	THIS DRAWING CONTAINS INFORMATION THAT IS PROPRIETARY TO TXGA INDUSTRIAL ELECTRONICS(SZ)CO.,LTD AND SHOULD NOT BE USED WITHOUT WRITTEN PERMISSION				
5:1	A4	X.XX±.004(0.10)	X.XX±0.5.									

REV	LOCATIONS	DESCRIPTION	DATE	REVISER	APPD



A B C D E F

A B C D E F

8 7 6 5 4 3 2 1

8 7 6 5 4 3 2 1

X-ON Electronics

Largest Supplier of Electrical and Electronic Components

Click to view similar products for [Board to Board & Mezzanine Connectors](#) category:

Click to view products by [TXGA](#) manufacturer:

Other Similar products are found below :

[10135583-642402LF](#) [89885-310LF](#) [589158040000018](#) [6-1393048-0](#) [68683-613](#) [MDF7-12DP-2.54DSA](#) [MDF7-18P-2.54DSA\(01\)](#) [MDF7-20DP-2.54DSA](#) [MDF7-26D-2.54DSA\(55\)](#) [MDF7-3P-2.54DSA\(01\)](#) [MDF7B-20P-2.54DSA\(01\)](#) [MDF7B-3P-2.54DSA\(55\)](#) [MDF7C-11P-2.54DSA\(55\)](#) [MDF7C-18P-2.54DSA\(55\)](#) [MDF7C-5P-2.54DSA\(01\)](#) [MDF7P-5P-2.54DSA\(55\)](#) [75234-0516](#) [FCN-230C068-11](#) [FCN-268F012-G/BD](#) [FCN-268F036-G/BD](#) [FCN-268M012-G/0D](#) [FCN-268M024-G/1D](#) [FCN-360C008-C](#) [FCN-360C040-C](#) [FCN-723J004/1](#) [MIS-048-01-F-D-DP-K](#) [832-10-034-10-001000](#) [93696-325LF](#) [11828-1FA](#) [AXK630345P](#) [18097-0013](#) [ICA-328STT](#) [2007042-2](#) [304400-2](#) [FCN-214Q030-G/0](#) [FCN-215Q040-G/0](#) [FCN-230C068-ESA](#) [FCN-234P048-G/0](#) [FCN-235D050-G/C](#) [FCN-360A3](#) [FCN-360C040-B](#) [210-93-314-41-105000](#) [2-22603-0](#) [379-064-521-202](#) [MDF7-12P-2.54DSA\(01\)](#) [MDF7-16P-2.54DS\(56\)](#) [MDF7-40DP-2.54DSA\(55\)](#) [MDF7-8P-2.54DSA\(55\)](#) [MDF7B-16P-2.54DSA\(55\)](#) [AXG720047](#)